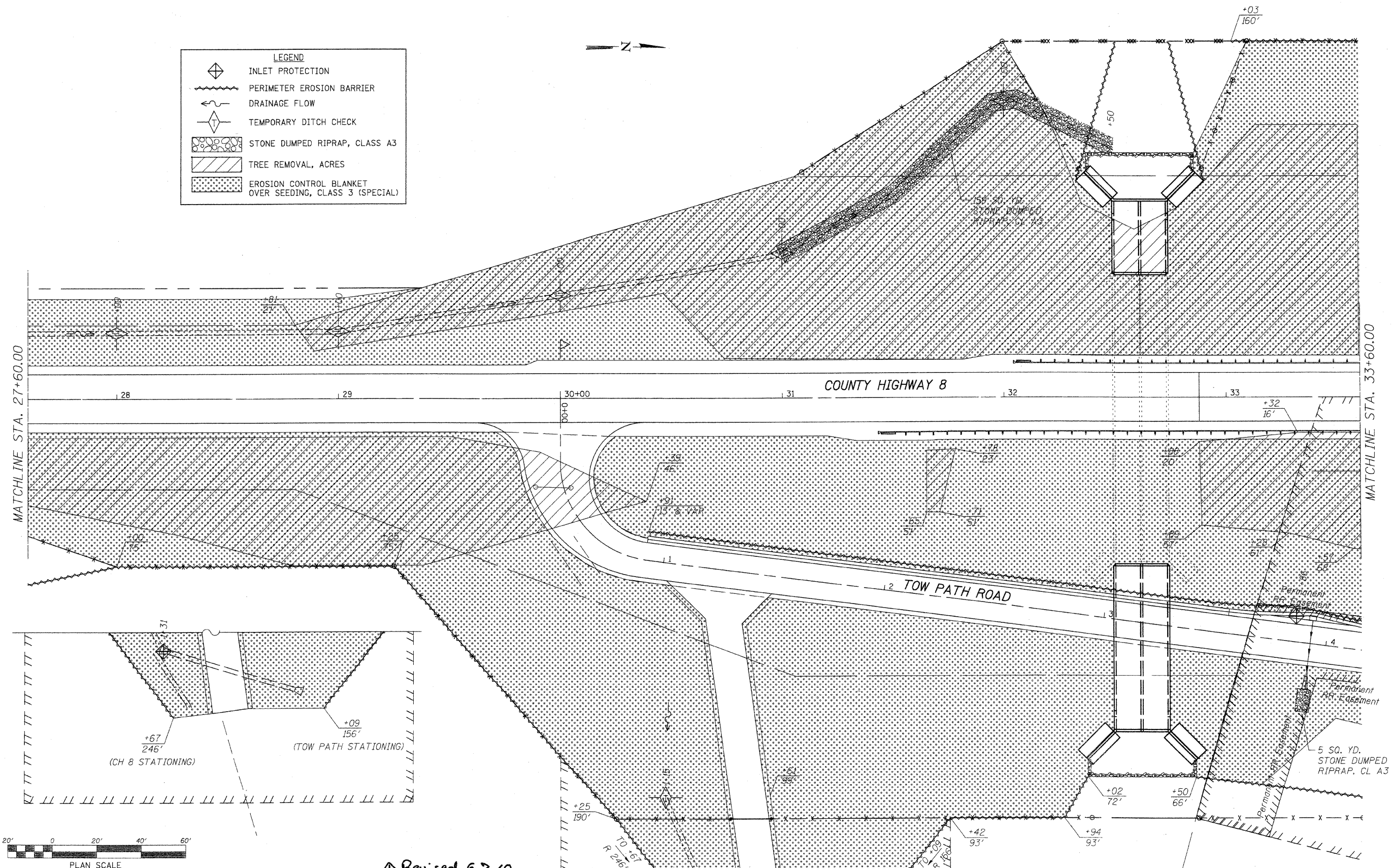


DATE	
BY	
DESIGNED	
PLANNED	
ALIGNED	
CHECKED	
NO. _____	
NOTE BOOK	
NO. _____	
CADD FILE NAME	

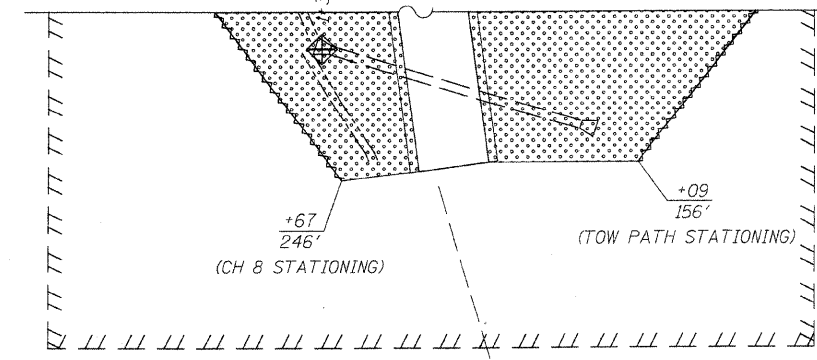
DATE	
BY	
DESIGNED	
PLANNED	
CHECKED	
NO. _____	
NOTE BOOK	
NO. _____	
STRUCTURE NOTATION	

LEGEND	
	INLET PROTECTION
	PERIMETER EROSION BARRIER
	DRAINAGE FLOW
	TEMPORARY DITCH CHECK
	STONE DUMPED RIPRAP, CLASS A3
	TREE REMOVAL, ACRES
	EROSION CONTROL BLANKET OVER SEEDING, CLASS 3 (SPECIAL)



MATCHLINE STA. 27+60.00

MATCHLINE STA. 33+60.00



Revised 6-7-10

WILLET, HOFMANN & ASSOCIATES, INC.
 CONSULTING ENGINEERS
 809 East Second Street Dixon, IL 61021
 Phone 815.284.3381 Fax 815.284.3386
 Design Firm # 184-00816
 www.willettthofmann.com

USER NAME =	DESIGNED -	REVISIONS
DESIGNED -	REVISIONS	
DRAWN -	REVISIONS	
CHECKED -	REVISIONS	
DATE -	REVISIONS	

BUREAU COUNTY
 BRIDGE REPLACEMENT
 FAS 188 (C.H. 8) OVER IAIS RAILROAD & THE HENNEPIN CANAL

SWPPP - C.H. 8

F.A.S.	SECTION	COUNTY	TOTAL SHEET NO.
188	05-00195-00-BR	BUREAU	127 54
STA. 27+60 TO STA. 33+60			CONTRACT NO. 81380
FED. ROAD DIST. NO. 7 ILLINOIS FED. AID PROJECT BR5-0188(118)			