



C.H. B & TR271 RECONSTRUCTION EARTHWORK TOTALS

LOCATION	EARTH EXCAVATION (SPECIAL) 20200410*	EARTH EXCAVATION ADJUSTED FOR SHRINKAGE 25%	EMBANKMENT	EARTHWORK BALANCE WASTE (+) OR SHORTAGE (-) FURNISHED EXCAVATION 20400800
	CU YD	CU YD	CU YD	CU YD
COUNTY HIGHWAY B	2,013.44	1,510.08	46,184.69	-44,674.61
TOW PATH ROAD	0.22	0.17	153.22	-153.05
SHARED USE PATH	167.45	125.59	435.01	-309.43
BIKE PATH	38.55	28.91	193.44	-164.53
TR271	167.27	125.45	9,003.77	-8,878.32
STAGE 1	49.30	37.00	232.20	-195.30
STAGE 2	1.85	1.39	535.58	-534.19
<b>TOTAL</b>	<b>2,438.08</b>	<b>1,828.59</b>	<b>56,737.92</b>	<b>-54,909.34</b>

TREE REMOVAL, ACRES

STATION	ACRE	REMARKS
CH B		
L 28+81 TO 35+44	1.203	
R 25+67 TO 26+60	0.109	
R 26+17 TO 30+39	0.380	
R 31+65 TO 31+78	0.006	
R 32+88 TO 34+41	0.169	
R 35+27 TO 35+43	0.004	
L & R 37+05 TO 38+42	0.162	
R 39+01 TO 39+21	0.004	
<b>SUBTOTAL</b>	<b>2.04</b>	
TR 271A		
L 55+53 TO 59+22	0.308	
L 61+07 TO 65+30	0.418	
R 54+90 TO 59+93	0.255	
R 60+61 TO 63+92	0.267	
R 64+20 TO 65+30	0.056	
<b>SUBTOTAL</b>	<b>1.30</b>	
<b>PROJECT TOTAL</b>	<b>3.34</b>	

TEMPORARY FENCE

STATION	FOOT	REMARKS
CH B		
L 39+75 TO 40+75	100	TO PROTECT CONCRETE FENCE POSTS
CONTINGENCY ITEM	100	AS DIRECTED BY THE ENGINEER
<b>PROJECT TOTAL</b>	<b>200</b>	

REMOVAL AND DISPOSAL OF UNSUITABLE MATERIAL

STATION	CU YD	REMARKS
CH B		
CH B	201	
TOW PATH ROAD	0	
SHARED USE PATH	17	
BIKE PATH	4	
STAGE 1A	34	
STAGE 1B	6	
STAGE 2	4	
<b>SUBTOTAL</b>	<b>266</b>	
TR 271A		
	17	
<b>SUBTOTAL</b>	<b>17</b>	
<b>PROJECT TOTAL</b>	<b>283</b>	

TRENCH BACKFILL

STATION	CU YD	REMARKS
CH B		
25+92	3.2	30" P CUL
<b>SUBTOTAL</b>	<b>3.2</b>	
TOW PATH ROAD		
3+85.55	3.0	12" SS
4+85	5.6	15" P CUL
5+72.69	3.9	15" P CUL
<b>SUBTOTAL</b>	<b>12.5</b>	
SHARED USE PATH		
0+26.75	3.7	15" P CUL (BIKE PATH)
<b>SUBTOTAL</b>	<b>3.7</b>	
CANAL STREET		
0+50	3.7	24" P CUL
<b>SUBTOTAL</b>	<b>3.7</b>	
<b>PROJECT TOTAL</b>	<b>23</b>	

GEOTECHNICAL FABRIC FOR GROUND STABILIZATION

STATION	SQ YD	REMARKS
CH B		
25+00 TO 41+00	3,509.00	CONTINGENCY ITEM
<b>SUBTOTAL</b>	<b>3,509.00</b>	
TR 271A		
54+90 TO 65+30	2,080.00	CONTINGENCY ITEM
<b>SUBTOTAL</b>	<b>2,080.00</b>	
<b>PROJECT TOTAL</b>	<b>5,589.00</b>	

SEEDING, CLASS 3 (SPECIAL)

STATION	ACRE	REMARKS
CH B		
CH B	3.24	
TOW PATH ROAD	0.03	
SHARED USE PATH	0.17	
BIKE PATH	0.10	
<b>SUBTOTAL</b>	<b>3.54</b>	
TR 271A		
	1.36	
<b>SUBTOTAL</b>	<b>1.36</b>	
<b>PROJECT TOTAL</b>	<b>4.90</b>	

EROSION CONTROL BLANKET

STATION	SQ YD	REMARKS
CH B		
CH B	15,682	
TOW PATH ROAD	145	
SHARED USE PATH	823	
BIKE PATH	484	
<b>SUBTOTAL</b>	<b>17,134</b>	
TR 271A		
	6,582	
<b>SUBTOTAL</b>	<b>6,582</b>	
<b>PROJECT TOTAL</b>	<b>23,716</b>	

TEMPORARY EROSION CONTROL SEEDING

STATION	ACRE	REMARKS
CH B		
CH B	3.24	
TOW PATH ROAD	0.03	
SHARED USE PATH	0.17	
BIKE PATH	0.10	
<b>SUBTOTAL</b>	<b>3.54</b>	
TR 271A		
	1.36	
<b>SUBTOTAL</b>	<b>1.36</b>	
<b>PROJECT TOTAL</b>	<b>4.90</b>	

TEMPORARY DITCH CHECKS

STATION	FOOT	REMARKS
CH B		
L 27+00	5	
L 28+00	5	
L 29+00	5	
L 30+00	5	
L 31+00	5	
L 32+00	5	
L 37+77	5	
L 38+66	5	
<b>SUBTOTAL</b>	<b>40</b>	
SHARED USE PATH		
L & R 8+60	10	
<b>SUBTOTAL</b>	<b>10</b>	
<b>PROJECT TOTAL</b>	<b>50</b>	

PERIMETER EROSION BARRIER

STATION	FOOT	REMARKS
CH B		
R 24+56 TO 26+60	272	
R 26+77 TO 30+67	473	
L 33+03 TO 35+49	254	
R 36+98 TO L 37+31	166	ALONG NORTH EDGE OF CANAL
R 36+98 TO 38+46	188	
L 37+31 TO 37+97	65	
<b>SUBTOTAL</b>	<b>1,418</b>	
TR 271A		
L 54+90 TO 58+25	360	
R 54+90 TO 59+66	531	
R 59+66 TO L 60+16	395	ALONG WEST EDGE OF W. BUREAU CREEK
L 60+35 TO R 60+41	324	ALONG EAST EDGE OF W. BUREAU CREEK
L 60+35 TO 65+30	540	
R 60+41 TO 65+30	657	
<b>SUBTOTAL</b>	<b>2,807</b>	
TOW PATH ROAD		
L 0+91 TO 4+73	384	
R 2+09 TO 3+02	138	
R 3+50 TO 5+05	145	
<b>SUBTOTAL</b>	<b>667</b>	
<b>PROJECT TOTAL</b>	<b>4,892</b>	

INLET AND PIPE PROTECTION

STATION	EACH	REMARKS
CH B		
L 25+92	1	
R 39+51	1	
L 39+10	1	
R 40+12	1	
<b>SUBTOTAL</b>	<b>4</b>	
TOW PATH ROAD		
R 1+31	1	
L 3+86	1	
L 4+85	1	
L 5+73	1	
<b>SUBTOTAL</b>	<b>4</b>	
SHARED USE PATH		
R 7+70	1	
<b>SUBTOTAL</b>	<b>1</b>	
CANAL STREET		
L 0+49	1	
<b>SUBTOTAL</b>	<b>1</b>	
<b>PROJECT TOTAL</b>	<b>10</b>	

STONE DUMPED RIPRAP, CLASS A3

STATION	SQ YD	REMARKS
CH B		
L 25+00 TO 26+01	91	8' WIDE
L 31+00 TO 32+50	159	8' WIDE
L 37+36 TO 37+97	69	8' WIDE
<b>SUBTOTAL</b>	<b>309</b>	
TOW PATH ROAD		
R 3+93	5	6' X 8'
<b>SUBTOTAL</b>	<b>5</b>	
CANAL STREET		
R 0+49	22	8' WIDE
<b>SUBTOTAL</b>	<b>22</b>	
<b>PROJECT TOTAL</b>	<b>336</b>	

DATE: \_\_\_\_\_ BY: \_\_\_\_\_  
 PLAN: \_\_\_\_\_  
 CHECKED: \_\_\_\_\_  
 PLOTTED: \_\_\_\_\_  
 ALIGNED: \_\_\_\_\_  
 NOTE BOOK NO. \_\_\_\_\_  
 CAD FILE NAME: \_\_\_\_\_

DATE: \_\_\_\_\_ BY: \_\_\_\_\_  
 PROFILE: \_\_\_\_\_  
 GRADES CHECKED: \_\_\_\_\_  
 STRUCTURE NOTATIONS OK'D: \_\_\_\_\_  
 NOTE BOOK NO. \_\_\_\_\_  
 FILE NAME: S:\STRUCT\1066D05BureauCounty\Design\COVER.C.dgn

Revised 6-7-10

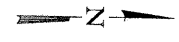
**WILLET, HOFMANN & ASSOCIATES, INC.**  
 CONSULTING ENGINEERS  
 809 East Second Street Dixon, IL 61021  
 Phone 815.294.3381 Fax 815.294.3386  
 Design Firm 815.294.0676  
 www.willettthofmann.com

USER NAME =	DESIGNED -	REVISED -
PLOT SCALE =	DRAWN -	REVISED -
PLOT DATE =	CHECKED -	REVISED -
	DATE	REVISED -

**BUREAU COUNTY**  
 BRIDGE REPLACEMENT  
 FAS 188 (C.H. 8) OVER LAIS RAILROAD & THE HENNIPEN CANAL

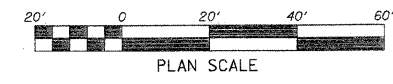
**CONTROL POINTS & SCHEDULES**

F.A.S. RTE.	SECTION	COUNTY	TOTAL SHEETS	SHEET NO.
	05-00195-00-BR	BUREAU	127	7
STA.	TO STA.	CONTRACT NO. 87380		
FED. ROAD DIST. NO. 7 ILLINOIS FED. AID PROJECT BRS-0186(118)				



PLAN	DATE
BY	
REVISIONS	
NO.	
DESCRIPTION	
DATE	
BY	
DATE	
BY	
DATE	

PROFILE	DATE
BY	
REVISIONS	
NO.	
DESCRIPTION	
DATE	
BY	
DATE	
BY	
DATE	



LEGEND	
	INLET PROTECTION
	PERIMETER EROSION BARRIER
	DRAINAGE FLOW
	TEMPORARY DITCH CHECK
	STONE DUMPED RIPRAP, CLASS A3
	TREE REMOVAL, ACRES
	EROSION CONTROL BLANKET OVER SEEDING, CLASS 3 (SPECIAL)

Revised 6-7-10

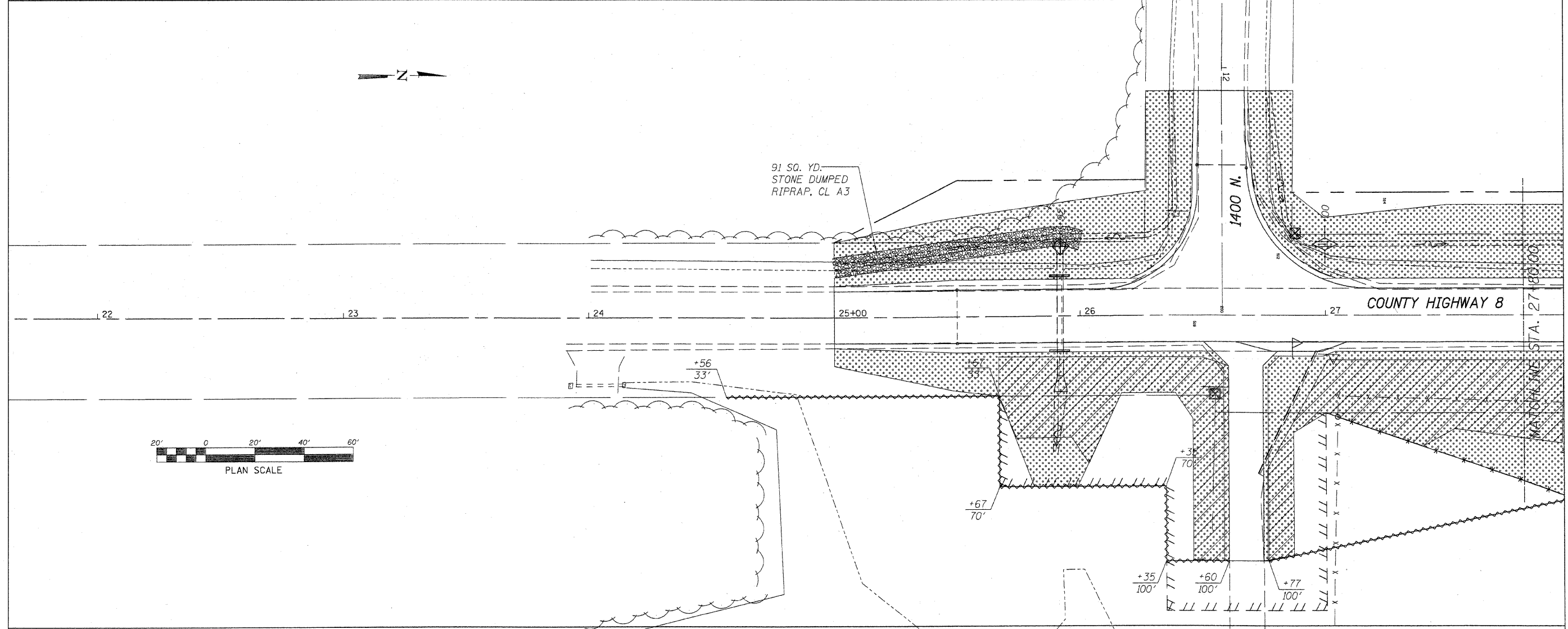
**WILLET, HOFMANN & ASSOCIATES, INC.**  
**CONSULTING ENGINEERS**  
 809 East Second Street Dixon, IL 61021  
 Phone 815-294-3381 Fax 815-294-3386  
 Design Firm # 184-00918  
 www.willettthofmann.com

USER NAME =	DESIGNED -	REVISED -
	DRAWN -	REVISED -
PLOT SCALE =	CHECKED -	REVISED -
PLOT DATE =	DATE -	REVISED -

**BUREAU COUNTY**  
**BRIDGE REPLACEMENT**  
**FAS 188 (C.H. 8) OVER IAIS RAILROAD & THE HENNEPIN CANAL**

**SWPPP - C.H. 8**

F.A.S.	SECTION	COUNTY	TOTAL SHEETS	SHEET NO.
188	05-00195-00-BR	BUREAU	127	53
STA. 21+80 TO STA. 27+80			CONTRACT NO. 87380	
FED. ROAD DIST. NO. 7 ILLINOIS FED. AID PROJECT BRS-0188(118)				

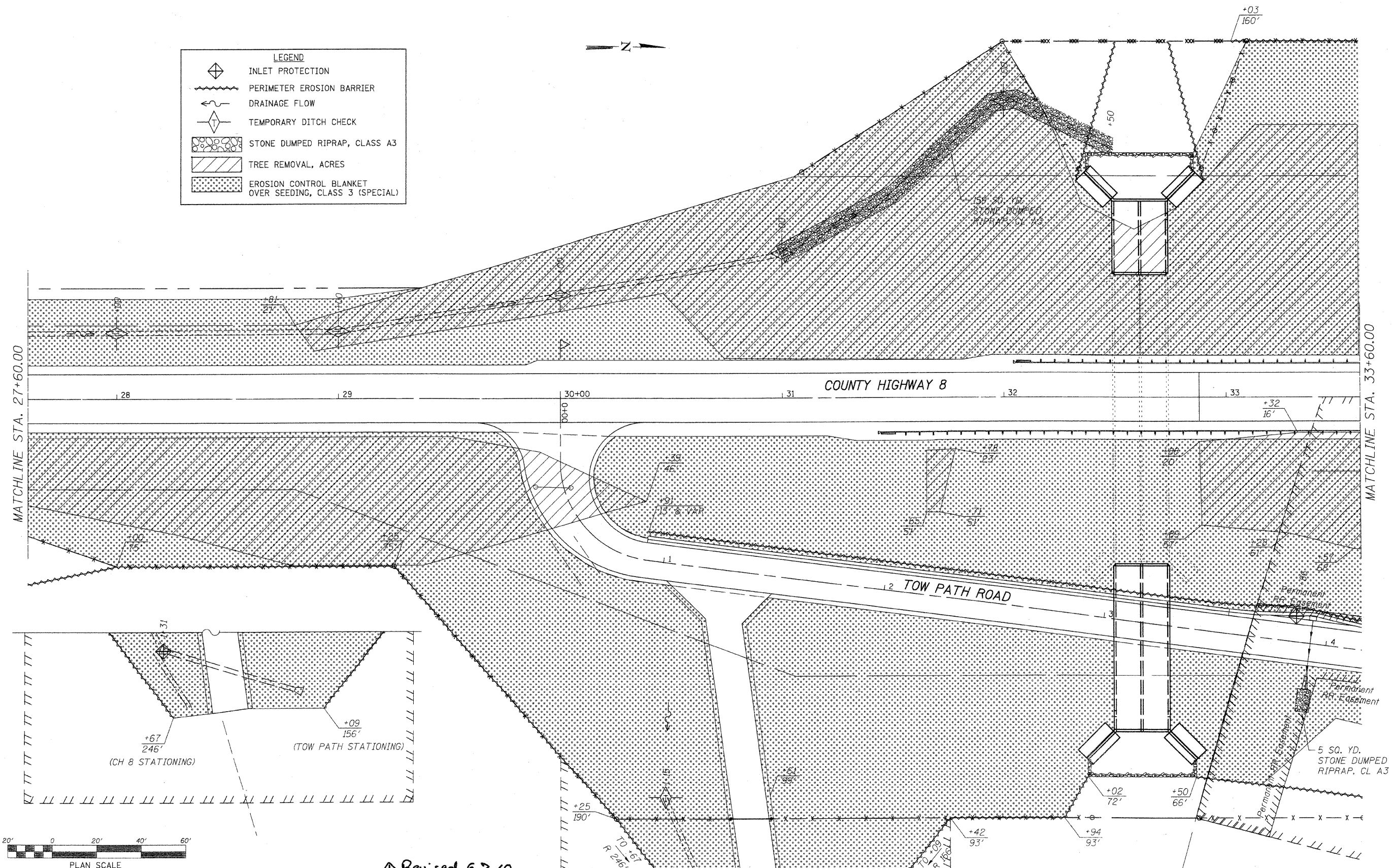
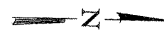


FILE NAME = s:\bure\1000000000\BureauCounty\Design\swppp\cch8.dgn

DATE	
BY	
DESIGNED	
PLANNED	
ALIGNED	
CHECKED	
NO. _____	
NOTE BOOK	
NO. _____	
CADD FILE NAME	

DATE	
BY	
DESIGNED	
PLANNED	
GRADES CHECKED	
NO. _____	
NOTE BOOK	
NO. _____	
STRUCTURE NOTATIONS (RWD)	

LEGEND	
	INLET PROTECTION
	PERIMETER EROSION BARRIER
	DRAINAGE FLOW
	TEMPORARY DITCH CHECK
	STONE DUMPED RIPRAP, CLASS A3
	TREE REMOVAL, ACRES
	EROSION CONTROL BLANKET OVER SEEDING, CLASS 3 (SPECIAL)



Revised 6-7-10

**WILLET, HOFMANN & ASSOCIATES, INC.**  
**CONSULTING ENGINEERS**  
 809 East Second Street Dixon, IL 61021  
 Phone 815.284.3381 Fax 815.284.3386  
 Design Firm # 184-00816  
 www.willettthofmann.com

USER NAME =	DESIGNED -	REVISIONS
PLLOT SCALE =	DRAWN -	REVISIONS
PLLOT DATE =	CHECKED -	REVISIONS
	DATE -	REVISIONS

**BUREAU COUNTY**  
**BRIDGE REPLACEMENT**  
**FAS 188 (C.H. 8) OVER IAIS RAILROAD & THE HENNEPIN CANAL**

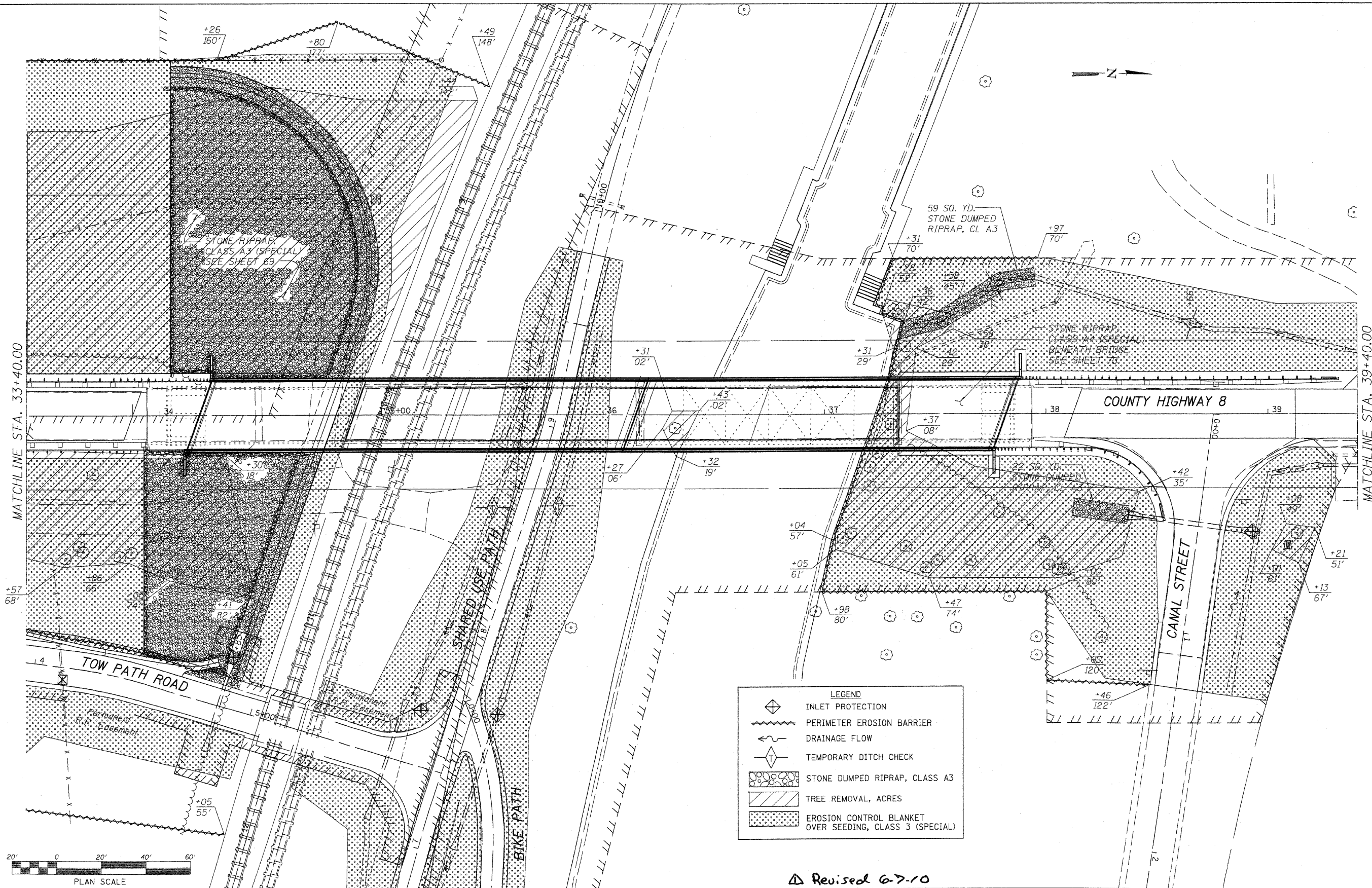
**SWPPP - C.H. 8**

F.A.S.	SECTION	COUNTY	TOTAL SHEET SHEETS NO.
188	05-00195-00-BR	BUREAU	127 54
STA. 27+60 TO STA. 33+60			CONTRACT NO. 81380
FED. ROAD DIST. NO. 7 ILLINOIS FED. AID PROJECT BR5-0188(118)			

DATE	BY
DESIGNED	PLANNED
ALIGNED	CHECKED
NO.	FILE NAME

DATE	BY
GRADES	PLOTTED
NOTES	CHECKED
NO.	NOTATION

FILE NAME = s:\bureau\1000008\Bureau\County\Design\swppp\01.dwg



Revised 6-7-10

**WILLET, HOFMANN & ASSOCIATES, INC.**  
 CONSULTING ENGINEERS  
 600 East Second Street, Dixon, IL 61221  
 Phone: 815.284.3381 Fax: 815.284.3385  
 Design Firm # 184-00918  
 www.willett-hofmann.com

USER NAME =	DESIGNED -	REVISED -
PLOT SCALE =	DRAWN -	REVISED -
PLOT DATE =	CHECKED -	REVISED -
	DATE -	REVISED -

**BUREAU COUNTY**  
 BRIDGE REPLACEMENT  
 FAS 188 (C.H. 8) OVER IAIS RAILROAD & THE HENNEPIN CANAL

**SWPPP - C.H. 8**

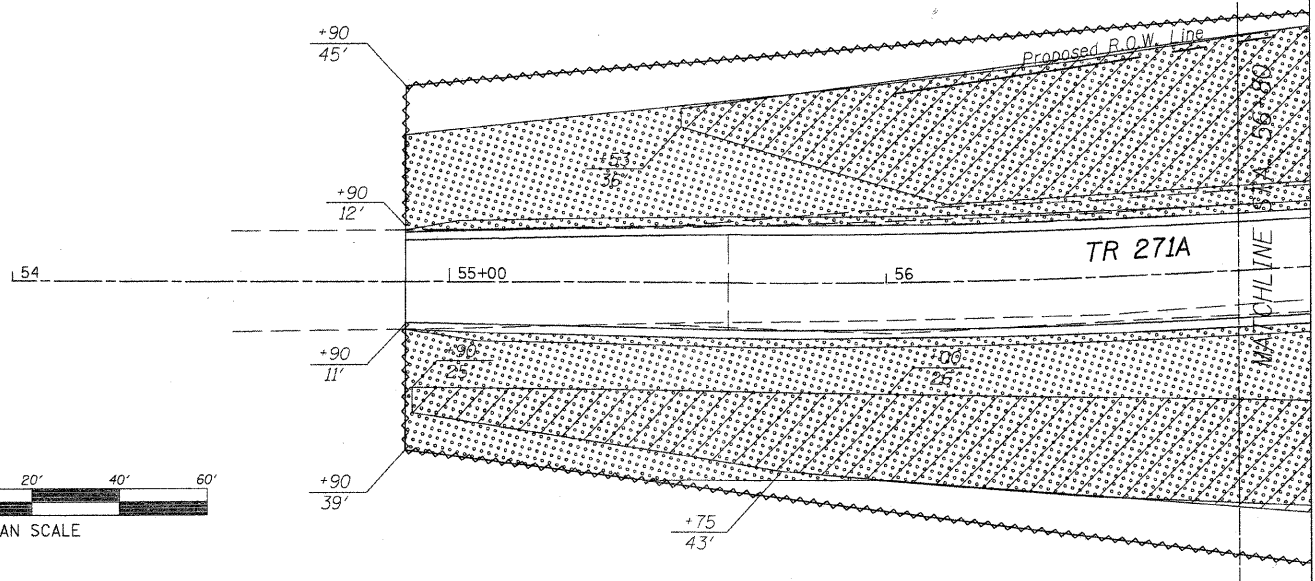
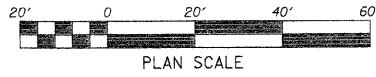
F.A.S.	SECTION	COUNTY	TOTAL SHEETS	SHEET NO.
188	05-00195-00-BR	BUREAU	127	55
STA. 33+40 TO STA. 39+40		CONTRACT NO. 81380		
FED. ROAD DIST. NO. 2 ILLINOIS FED. AID PROJECT BRS-0188(18)				

DATE: \_\_\_\_\_  
 BY: \_\_\_\_\_  
 CHECKED: \_\_\_\_\_  
 ALIGNED: \_\_\_\_\_  
 PLOTTED: \_\_\_\_\_  
 NOTE BOOK NO.: \_\_\_\_\_  
 CAD FILE NAME: \_\_\_\_\_

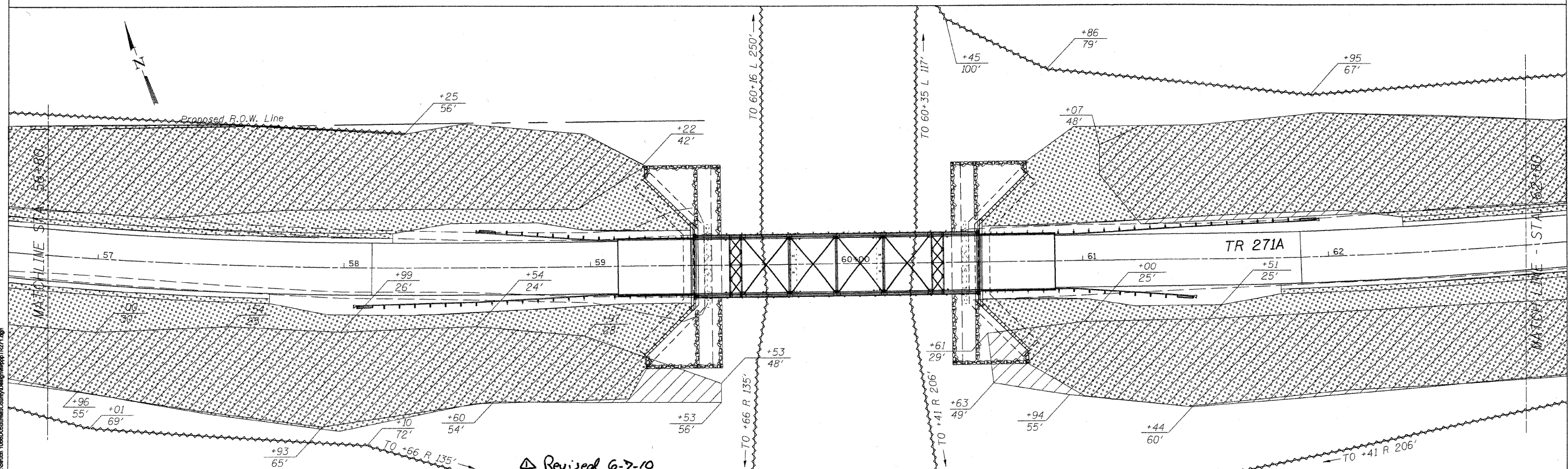


**LEGEND**

	INLET PROTECTION
	PERIMETER EROSION BARRIER
	DRAINAGE FLOW
	TEMPORARY DITCH CHECK
	STONE DUMPED RIPRAP, CLASS B3
	TREE REMOVAL, ACRES
	EROSION CONTROL BLANKET OVER SEEDING, CLASS 3 (SPECIAL)



DATE: \_\_\_\_\_  
 BY: \_\_\_\_\_  
 CHECKED: \_\_\_\_\_  
 PLOTTED: \_\_\_\_\_  
 NOTE BOOK NO.: \_\_\_\_\_  
 CAD FILE NAME: \_\_\_\_\_



Revised 6-7-10

**WILLET, HOFMANN & ASSOCIATES, INC.**  
 CONSULTING ENGINEERS  
 809 East Second Street, Dixon, IL 61021  
 Phone: 815.294.3381 Fax: 815.294.3385  
 Design Firm # 184-00918  
 www.willett-hofmann.com

USER NAME =	DESIGNED -	REVISED -
PLOT SCALE =	DRAWN -	REVISED -
PLOT DATE =	CHECKED -	REVISED -
	DATE -	REVISED -

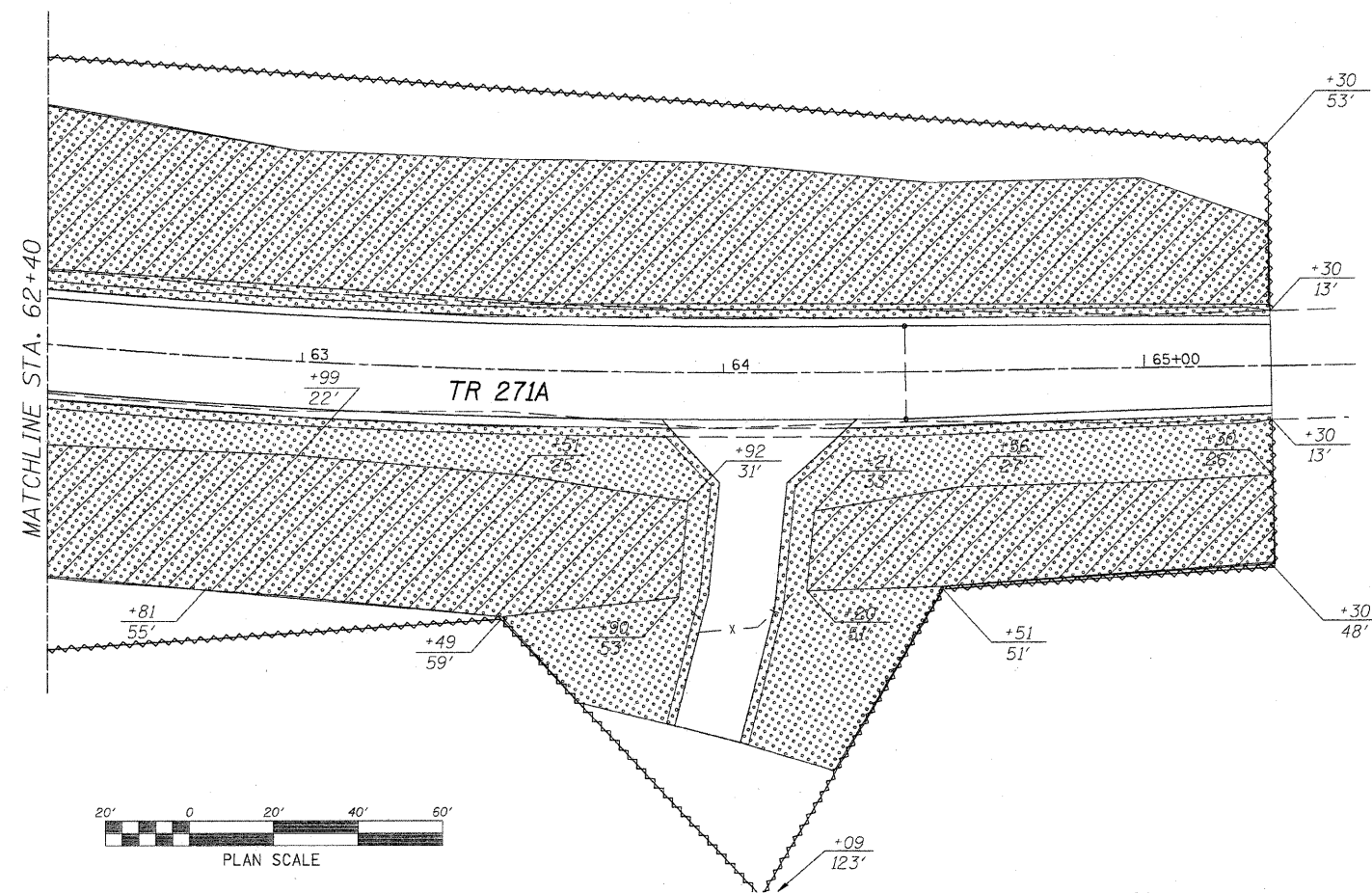
**BUREAU COUNTY**  
 BRIDGE REPLACEMENT  
 FAS 188 (C.H. 8) OVER IAIS RAILROAD & THE HENNEPIN CANAL

SWPPP - TR 271A

F.A.S.	SECTION	COUNTY	TOTAL SHEETS	SHEET NO.
188	05-00195-00-BR	BUREAU	127	111
STA. 54+00 TO STA. 56+80		CONTRACT NO. 81380		
FED. ROAD DIST. NO. 7		ILLINOIS FED. AID PROJECT	BRS-0188(118)	

DATE	
BY	
PLAN	
SURVEYED	
ALIGNED	
CHECKED	
NOTE BOOK	
NO.	

DATE	
BY	
PROFILE	
SURVEYED	
GRADES CHECKED	
NOTE BOOK	
NO.	



LEGEND	
	INLET PROTECTION
	PERIMETER EROSION BARRIER
	DRAINAGE FLOW
	TEMPORARY DITCH CHECK
	STONE DUMPED RIPRAP, CLASS B3
	TREE REMOVAL, ACRES
	EROSION CONTROL BLANKET OVER SEEDING, CLASS 3 (SPECIAL)

△ Revised 6-7-10

**WILLET. HOFMANN & ASSOCIATES, INC.**  
**CONSULTING ENGINEERS**  
 809 East Second Street, Dixon, IL 61021  
 Phone 815.294.3381 Fax 815.294.3385  
 Design Firm # 184-00316  
 www.willett-hofmann.com

USER NAME =	DESIGNED -	REVISED -
	DRAWN -	REVISED -
PLOT SCALE =	CHECKED -	REVISED -
PLOT DATE =	DATE -	REVISED -

**BUREAU COUNTY**  
**BRIDGE REPLACEMENT**  
**FAS 188 (C.H. 8) OVER IAIS RAILROAD & THE HENNEPIN CANAL**

**SWPPP - TR 271A**

F.A.S.	SECTION	COUNTY	TOTAL SHEET NO.
188	05-00195-00-BR	BUREAU	127   112
STA. 62+40 TO STA. 65+50			CONTRACT NO. 01380
FED. ROAD DIST. NO. 7   ILLINOIS FED. AID PROJECT BRS-0188(1B)			

FILE NAME = s:\broad\1880008\BureauCounty\Design\swpp\TR271.dgn