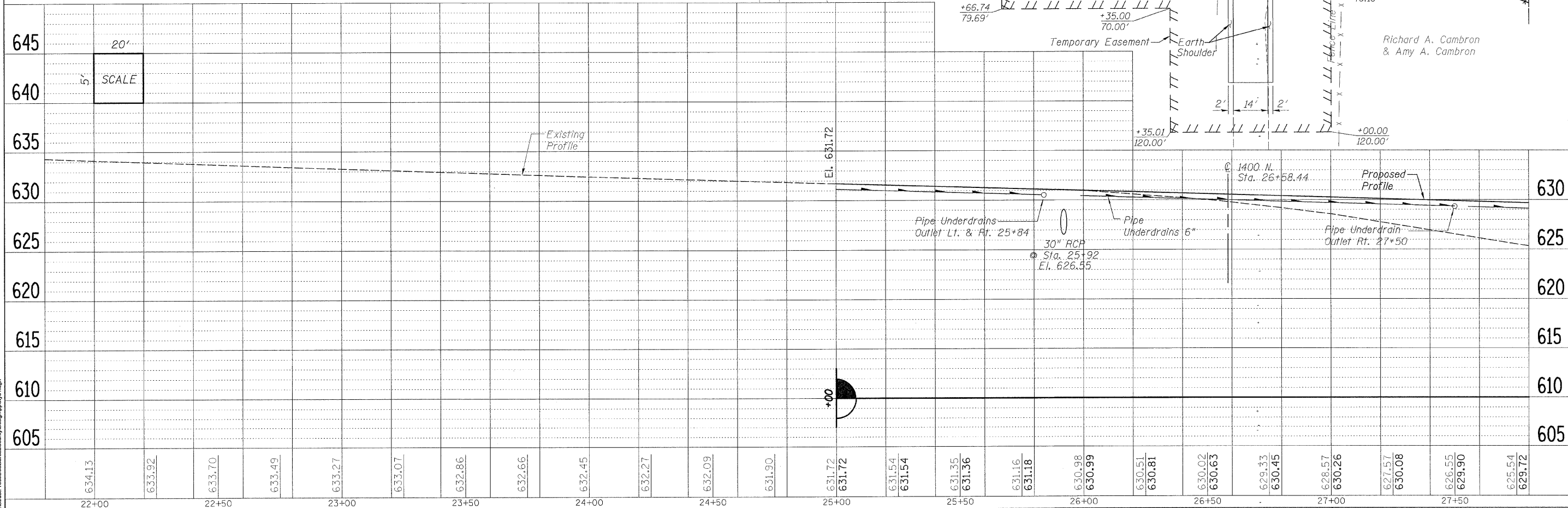
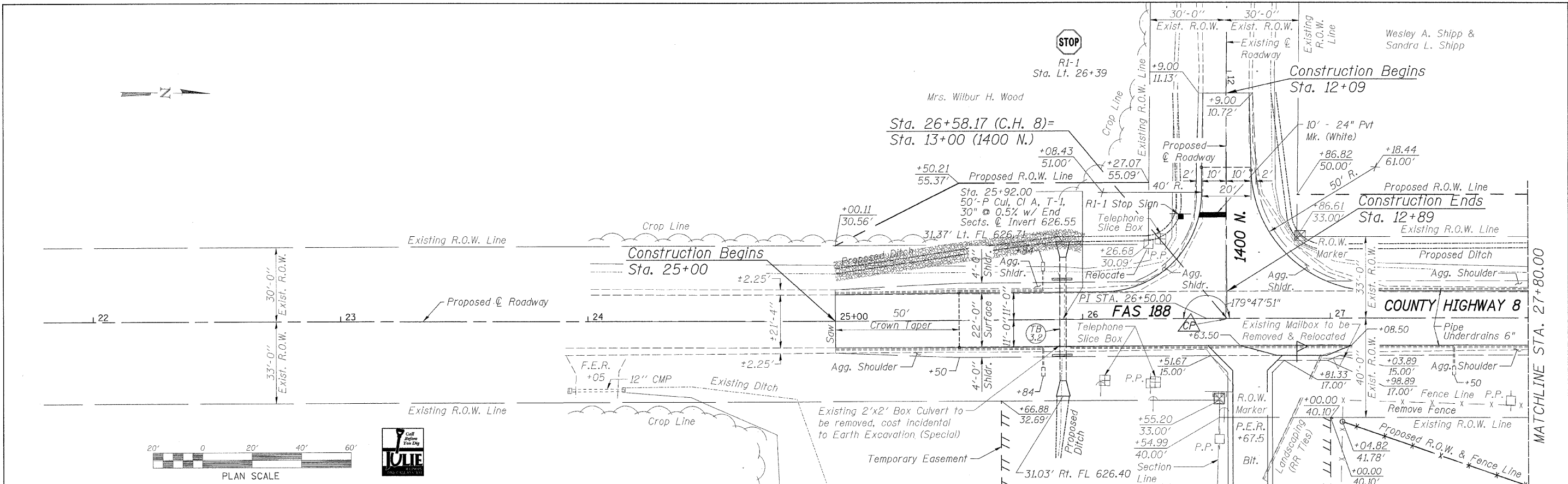


DATE	
BY	
PLAN	
SURVEYED	
ALIGNED	
CHECKED	
NO. OF W.A. CHECKED	
DATE FILED	
NO.	

DATE	
BY	
PROFILE	
SURVEYED	
PROBES	
CHECKED	
NO. NOTED	
STRUCTURE	
NOTATIONS	
CHRD	
NO.	



634.13	633.92	633.70	633.49	633.27	633.07	632.86	632.66	632.45	632.27	632.09	631.90	631.72	631.72	631.54	631.54	631.35	631.36	631.16	631.18	630.98	630.99	630.51	630.81	630.02	630.63	629.33	630.45	628.57	630.26	627.57	630.08	626.55	629.90	625.54	629.72	
22+00	22+50	23+00	23+50	24+00	24+50	25+00	25+50	26+00	26+50	27+00	27+50																									

**WILLET, HOFMANN & ASSOCIATES, INC.**  
**CONSULTING ENGINEERS**  
 809 East Second Street, Dixon, IL 61021  
 Phone 815.284.3381 Fax 815.284.3385  
 Design Firm # 184-00918  
 www.willett-hofmann.com

USER NAME =	DESIGNED -	REVISED -
PLOT SCALE =	DRAWN -	REVISED -
PLOT DATE =	CHECKED -	REVISED -
	DATE -	REVISED -

**BUREAU COUNTY**  
**BRIDGE REPLACEMENT**  
**FAS 188 (C.H. 8) OVER IAIS RAILROAD & THE HENNEPIN CANAL**

**C.H. 8 - PLAN & PROFILE**

F.A.S.	SECTION	COUNTY	TOTAL SHEETS	SHEET NO.
188	05-00195-00-BR	BUREAU	127	13
STA. 21+80 TO STA. 27+80		CONTRACT NO. 87380		
FED. ROAD DIST. NO. 7 [ILLINOIS] FED. AID PROJECT BRS-018R118				