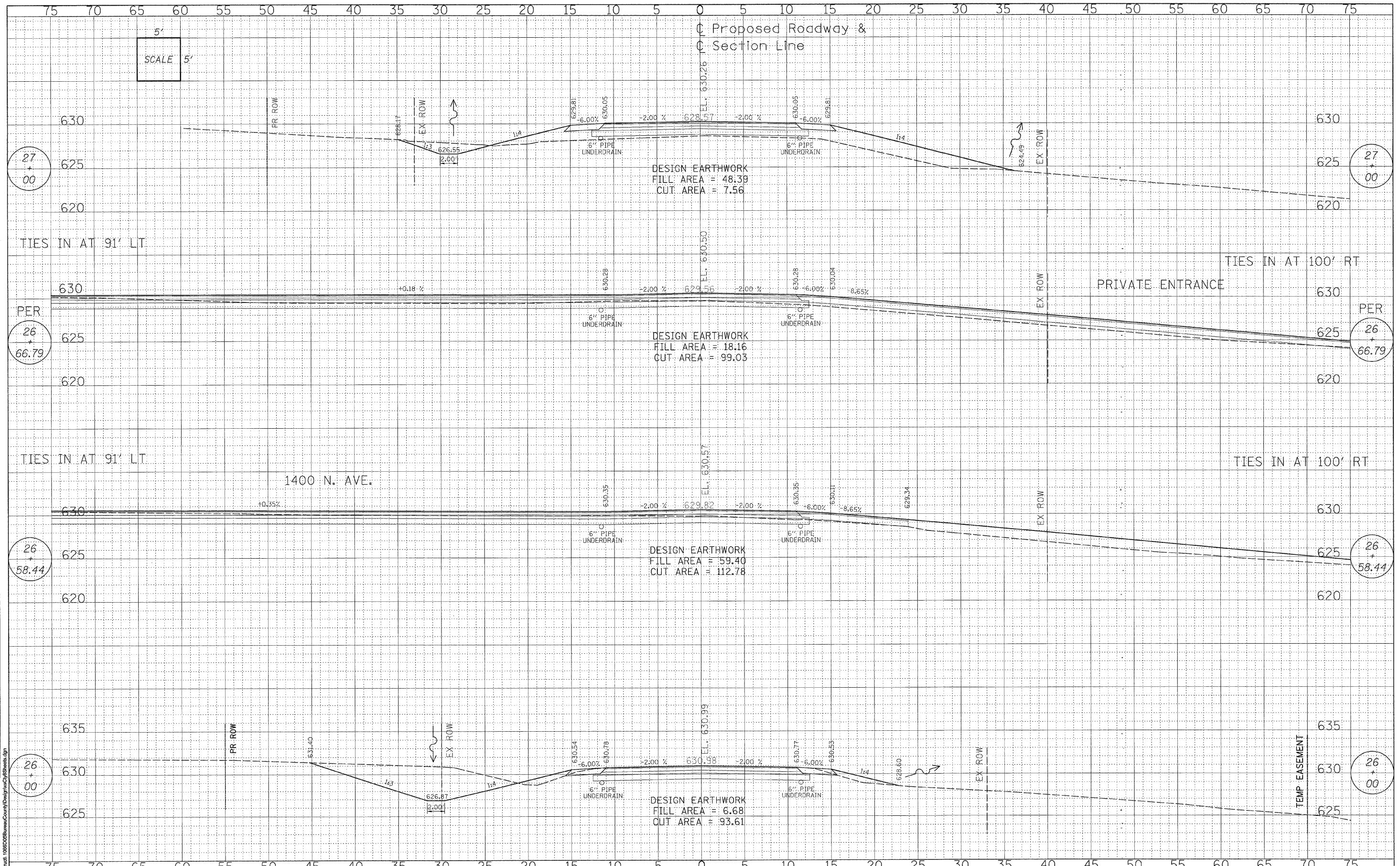


DATE	
BY	
FINAL SURVEY	
NOTED	
PLOTTED	
DATE	
NO.	
AREAS CHECKED	

DATE	
BY	
ORIGINAL SURVEY	
NOTED	
PLOTTED	
DATE	
NO.	
AREAS CHECKED	



FILE NAME: s:\Sheet\108180\Bureau\County\Design\Sheet.dgn

WILLET, HOFMANN & ASSOCIATES, INC.
CONSULTING ENGINEERS
 809 East Second Street, Dixon, IL 61021
 Phone 815.284.3381 Fax 815.284.3385
 Design Firm # 184-00918
 www.willettthofmann.com

USER NAME =	DESIGNED -	REVISED -
PLOT SCALE =	DRAWN -	REVISED -
PLOT DATE =	CHECKED -	REVISED -
	DATE	REVISED -

BUREAU COUNTY
BRIDGE REPLACEMENT
FAS 188 (C.H. 8) OVER IAIS RAILROAD & THE HENNEPIN CANAL

C.H. 8 / TOW PATH RD - CROSS SECTIONS

F.A.S. RTE.	SECTION	COUNTY	TOTAL SHEETS	SHEET NO.
188	05-00195-00-BR	BUREAU	127	20
STA. 26+00.00 TO STA. 27+00.00		CONTRACT NO. 87380		
FED. ROAD DIST. NO. 7 ILLINOIS FED. AID PROJECT BR5-0188(118)				