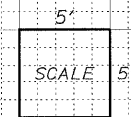
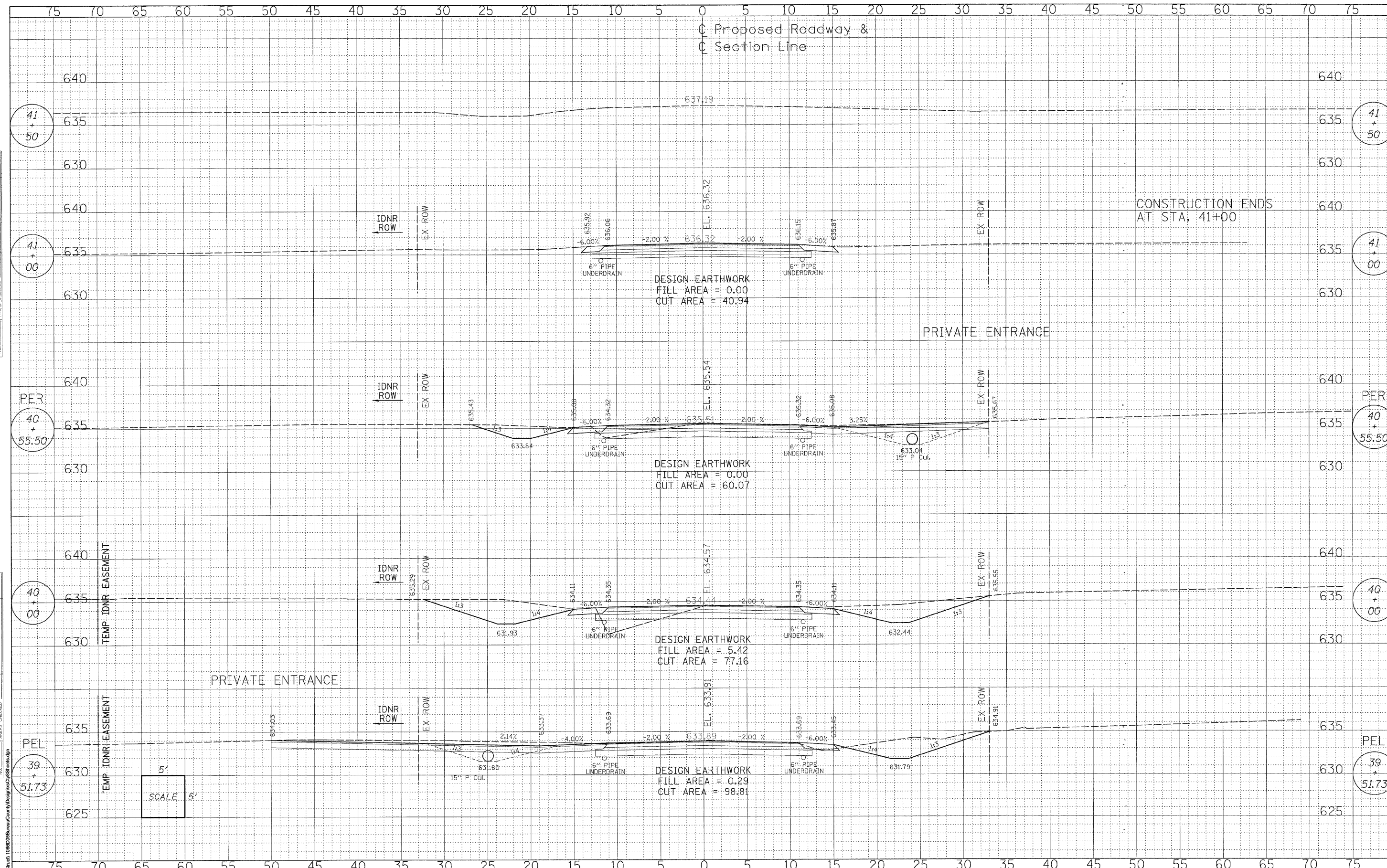


DATE	
BY	
FINAL SURVEY	
SURVEYED	
PLOTTED	
NOTE BOOK	
AREAS	
CHECKED	
NO.	

DATE	
BY	
ORIGINAL SURVEY	
SURVEYED	
PLOTTED	
NOTE BOOK	
AREAS	
CHECKED	
NO.	



FILE NAME = S:\Struct\_10860\BureauCounty\Design\CH8\Sheet.dgn

**WILLET, HOFMANN & ASSOCIATES, INC.**  
CONSULTING ENGINEERS  
809 East Second Street Dixon, IL 61021  
Phone 815.284.3381 Fax 815.284.3385  
Design Firm # 184-0098  
www.willetthofmann.com

USER NAME =	DESIGNED -	REVISED -
PLOT SCALE =	DRAWN -	REVISED -
PLOT DATE =	CHECKED -	REVISED -
	DATE -	REVISED -

**BUREAU COUNTY**  
BRIDGE REPLACEMENT  
FAS 188 (C.H. 8) OVER IAIS RAILROAD & THE HENNEPIN CANAL

**C.H. 8 / TOW PATH RD - CROSS SECTIONS**

F.A.S. RTE.	SECTION	COUNTY	TOTAL SHEETS	SHEET NO.
188	05-00195-00-BR	BUREAU	127	28

STA. 39+58.00 TO STA. 41+50.00 CONTRACT NO. 87380  
FED. ROAD DIST. NO. 7 (ILLINOIS) FED. AID PROJECT BRS-0188(118)