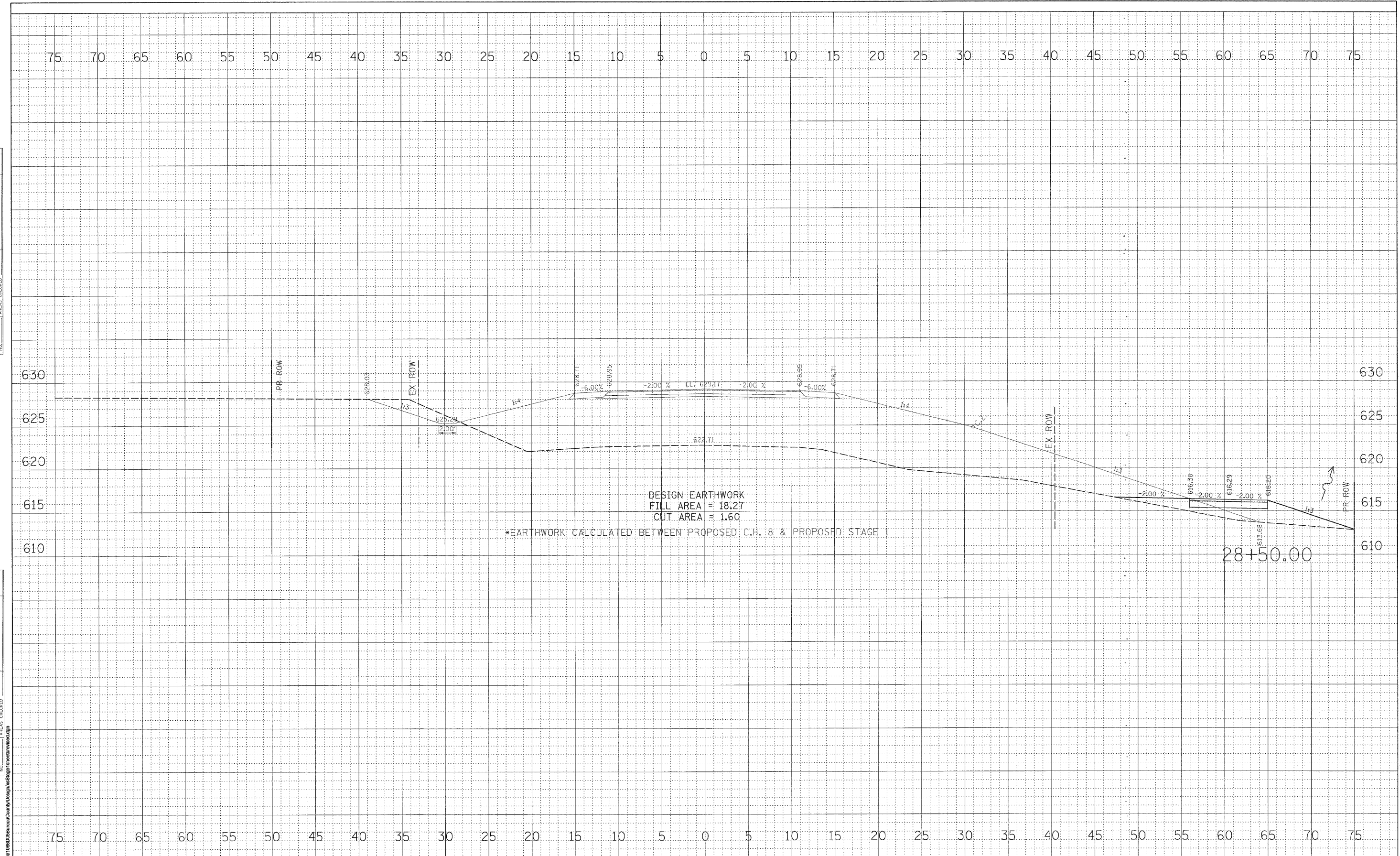


FINAL SURVEY NO.	SURVEYED	BY	DATE
NOTE BOOK	PLOTTED		
	TEMPLATE		
	AREAS		
	CHECKED		

ORIGINAL SURVEY NO.	DESIGNED	BY	DATE
	PLOTTED		
	TEMPLATE		
	AREAS		
	CHECKED		



**WILLETT, HOFMANN & ASSOCIATES, INC.**  
**CONSULTING ENGINEERS**  
 809 East Second Street Dixon, IL 61021  
 Phone 815.294.3381 Fax 815.294.3386  
 Design Firm # 184-0018  
 www.willett-hofmann.com

USER NAME =	DESIGNED -	REVISED -
PLLOT SCALE =	DRAWN -	REVISED -
PLLOT DATE =	CHECKED -	REVISED -
	DATE -	REVISED -

**BUREAU COUNTY**  
**BRIDGE REPLACEMENT**  
**FAS 188 (C.H. 8) OVER IAIS RAILROAD & THE HENNEPIN CANAL**

**C.H. 8 - STAGE 1 CROSS SECTIONS**

F.A. REC.	SECTION	COUNTY	TOTAL SHEETS	SHEET NO.
188	05-00195-00-BR	BUREAU	127	46
STA. 28+50.00 TO STA. 28+50.00		CONTRACT NO. 87380		
FED. ROAD DIST. NO. 1 ILLINOIS FED. AID PROJECT BRS-0188(118)				