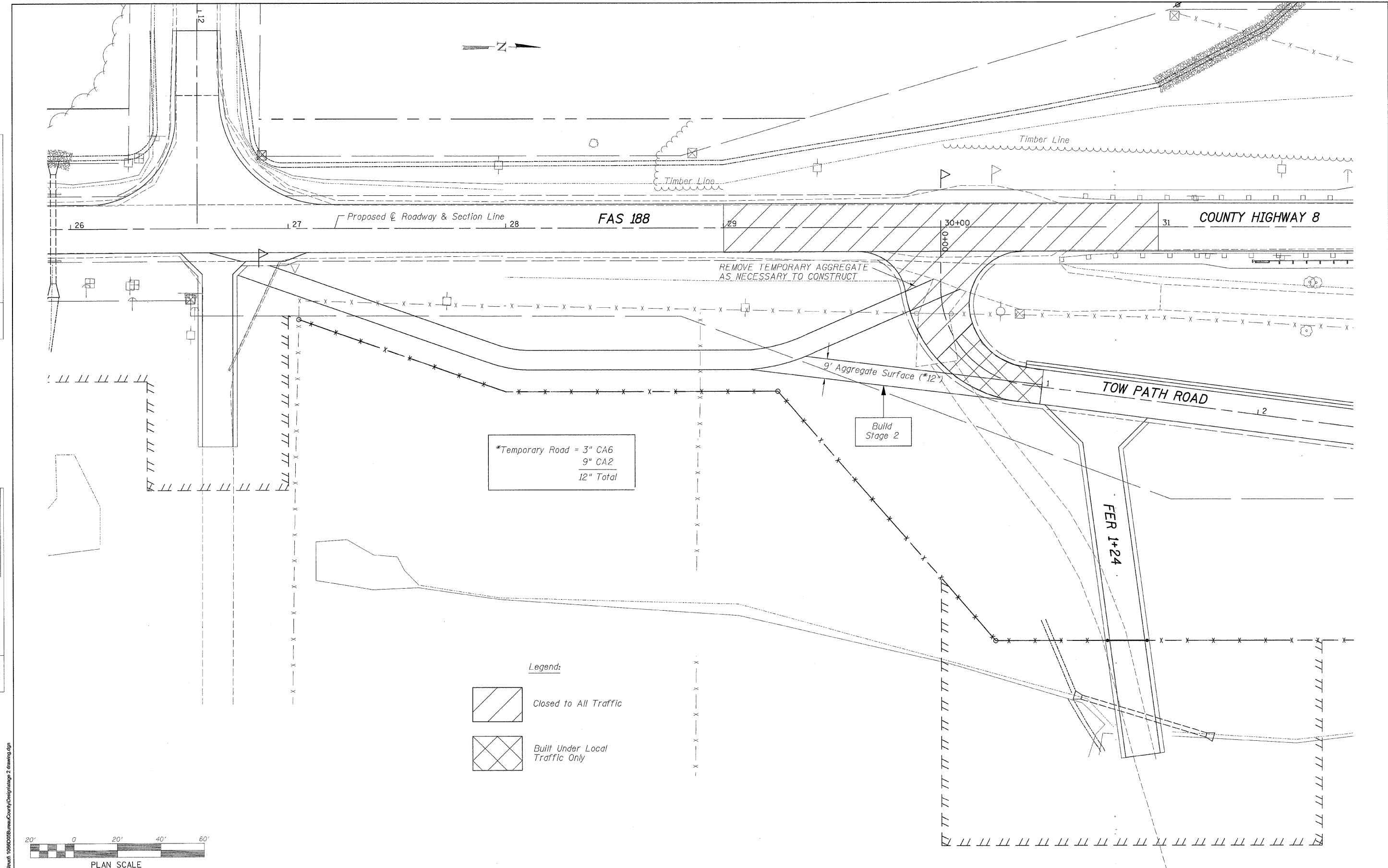


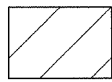
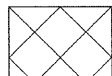
DATE	
BY	
APPROVED	
PLANNED	
NOTE BOOK	
NO.	
CAD FILE NAME	

DATE	
BY	
APPROVED	
PLANNED	
NOTE BOOK	
NO.	
STRUCTURE NOTATIONS	CHKD



*Temporary Road = 3" CA6
 9" CA2
 12" Total

Legend:

-  Closed to All Traffic
-  Built Under Local Traffic Only



FILE NAME: F:\Struct\106605BureauCounty\Design\stage 2.dwg

WILLET, HOFMANN & ASSOCIATES, INC.
 CONSULTING ENGINEERS
 809 East Second Street Dixon, IL 61021
 Phone 815.284.3381 Fax 815.284.3385
 Design Firm # 184-00918
 www.willett-hofmann.com

USER NAME =	DESIGNED -	REVISED -
PLOT SCALE =	DRAWN -	REVISED -
PLOT DATE =	CHECKED -	REVISED -
	DATE -	REVISED -

BUREAU COUNTY
 BRIDGE REPLACEMENT
 FAS 188 (C.H. 8) OVER IAS RAILROAD & THE HENNEPIN CANAL

C.H. 8 - STAGE 2 PLAN

F.A.S.	SECTION	COUNTY	TOTAL SHEETS	SHEET NO.
188	05-00195-00-BR	BUREAU	127	49
STA. 27+60 TO STA. 33+60			CONTRACT NO. 81380	
FED. ROAD DIST. NO. 7 ILLINOIS FED. AID PROJECT BRS-0188(118)				