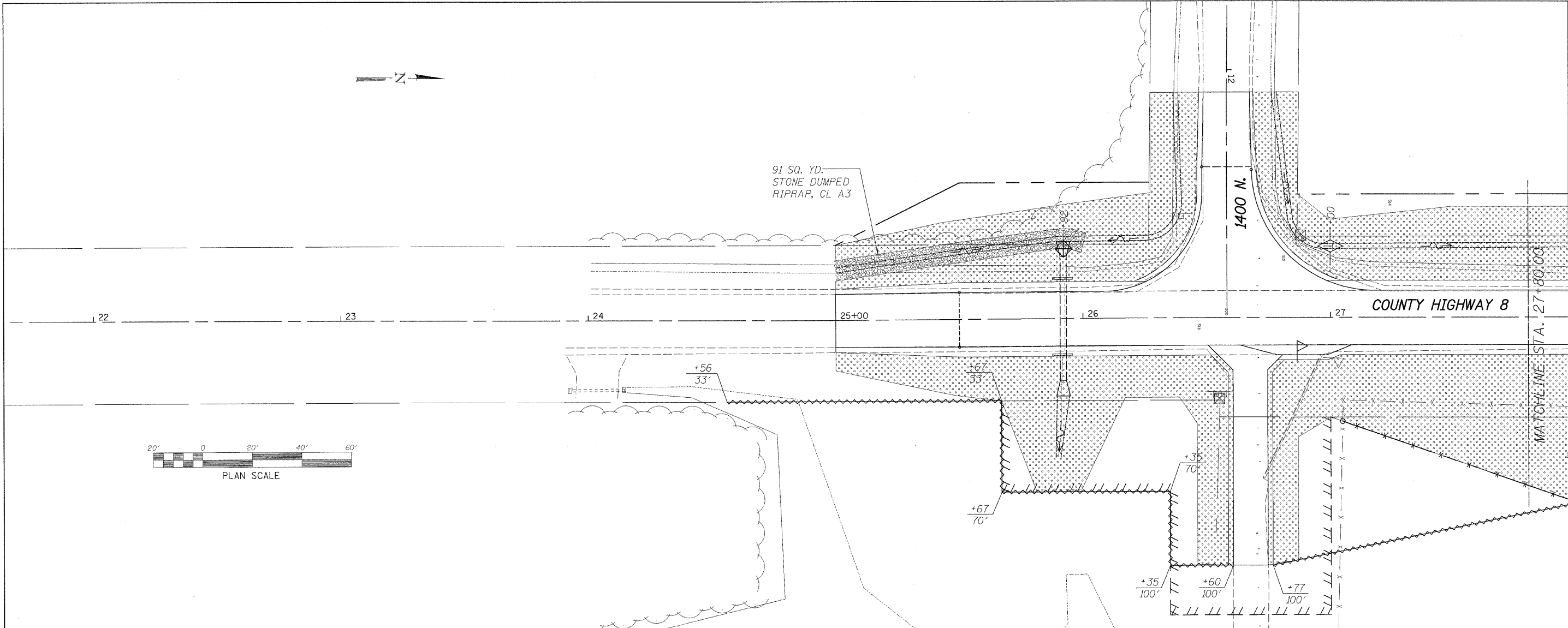


PLAN
 SURVEYED _____
 DRAINED _____
 ALIGNED _____
 CHECKED _____
 BY _____
 DATE _____

PROFILE
 SURVEYED _____
 DRAINED _____
 CHECKED _____
 BY _____
 DATE _____



LEGEND

	INLET PROTECTION
	PERIMETER EROSION BARRIER
	DRAINAGE FLOW
	TEMPORARY DITCH CHECK
	STONE DUMPED RIPRAP, CLASS A3
	TREE REMOVAL, ACRES
	EROSION CONTROL BLANKET OVER SEEDING, CLASS 3 (SPECIAL)

FILE NAME = s:\bureau\10080000\Bureau\County\Design\swppp\c8\g1.dgn

WILLETT, HOFMANN & ASSOCIATES, INC.
CONSULTING ENGINEERS
 809 East Second Street Dixon, IL 61021
 Phone 815-294-3361 Fax 815-294-3365
 Design Firm # 184-00518
 www.willetthofmann.com

USER NAME =	DESIGNED -	REVISED -
DRAWN -	REVISIONS -	
PLOT SCALE =	CHECKED -	REVISED -
PLOT DATE =	DATE -	REVISED -

BUREAU COUNTY
BRIDGE REPLACEMENT
FAS 188 (C.H. 8) OVER IAIS RAILROAD & THE HENNEPIN CANAL

SWPPP - C.H. 8

F.A.S.	SECTION	COUNTY	TOTAL SHEETS	SHEET NO.
188	05-00195-00-BR	BUREAU	127	53
STA. 21+80 TO STA. 27+80		CONTRACT NO. 87380		
FED. ROAD DIST. NO. 1 ILLINOIS FED. AID PROJECT BRS-0188(118)				