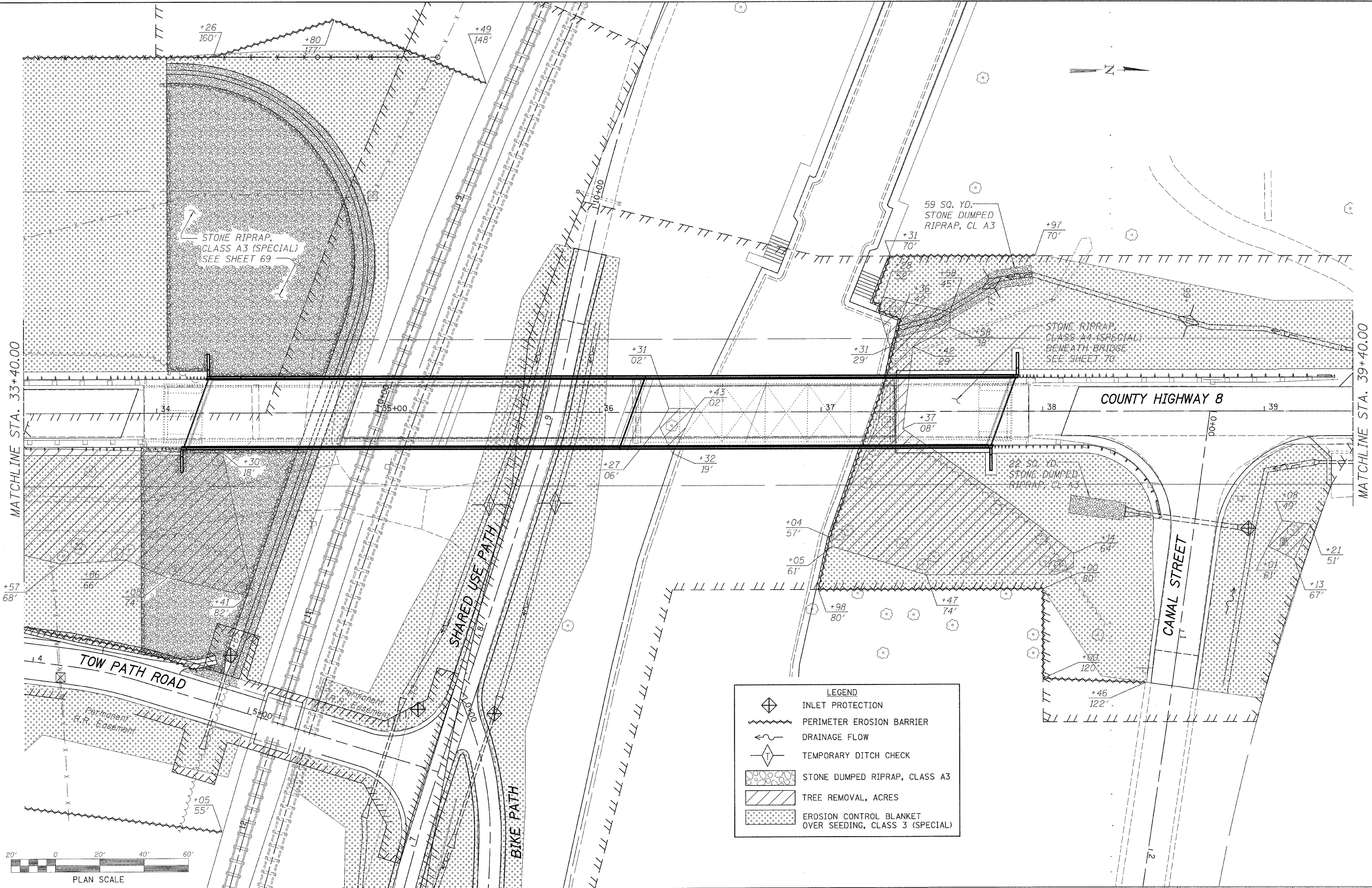


DATE	
BY	
PLAN	
NO.	
DATE	
BY	
PROFILE	
NO.	
DATE	
BY	
PLAN	
NO.	
DATE	
BY	
PROFILE	
NO.	

DATE	
BY	
PLAN	
NO.	
DATE	
BY	
PROFILE	
NO.	
DATE	
BY	
PLAN	
NO.	
DATE	
BY	
PROFILE	
NO.	



FILE NAME: e:\bureau\060608\Bureau\County\Design\hwy\CH8.dgn

WILLET, HOFMANN & ASSOCIATES, INC.
CONSULTING ENGINEERS
 609 East Second Street Dixon, IL 61021
 Phone 815.284.3381 Fax 815.284.3385
 Design Firm # 184-00918
 www.willett-hofmann.com

USER NAME =	DESIGNED -	REVISED -
PLOT SCALE =	DRAWN -	REVISED -
PLOT DATE =	CHECKED -	REVISED -
	DATE	REVISED -

BUREAU COUNTY
BRIDGE REPLACEMENT
FAS 188 (C.H. 8) OVER IAS RAILROAD & THE HENNEPIN CANAL

SWPPP - C.H. 8

F.A.S.	SECTION	COUNTY	TOTAL SHEETS	SHEET NO.
188	05-00195-00-BR	BUREAU	127	55
STA. 33+40 TO STA. 39+40		CONTRACT NO. 87380		
FED. ROAD DIST. NO. 7 ILLINOIS FED. AID PROJECT BRS-0188(18)				