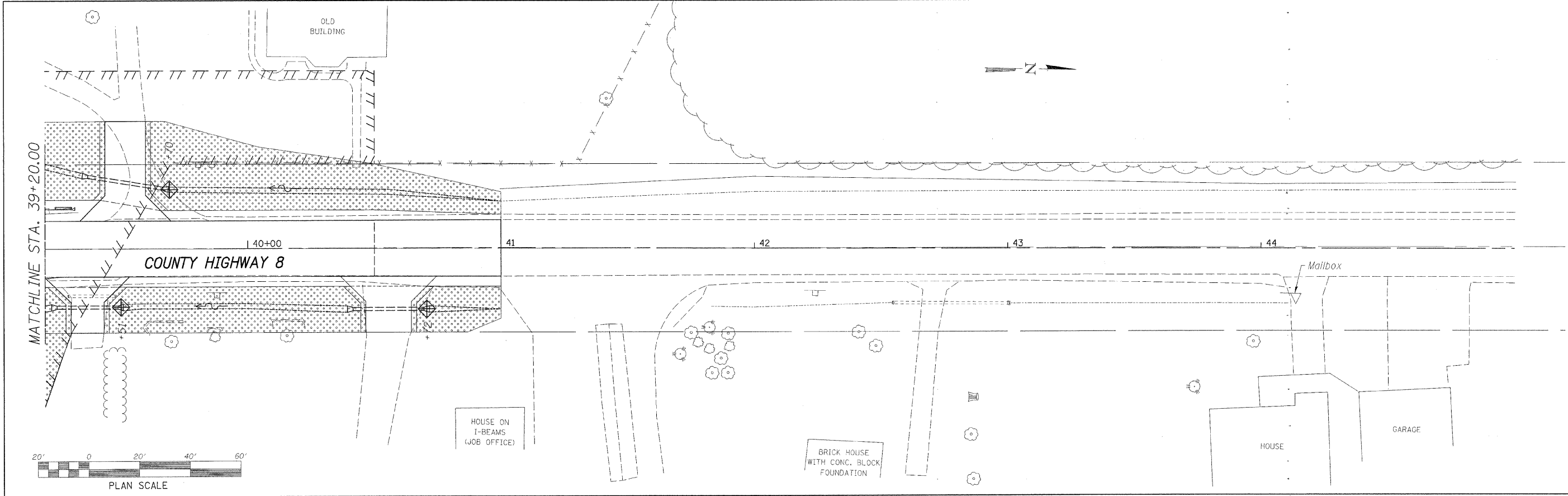


PLAN	SURVEYED	DATE
NOTE BOOK	ALIGNED	
NO.	RT. OF WAY CHECKED	
	NO. FILE NAME	



PROFILE	SURVEYED	DATE
NOTE BOOK	NOTED	
NO.	STRUCTURE NOTATION CHECKED	

LEGEND	
	INLET PROTECTION
	PERIMETER EROSION BARRIER
	DRAINAGE FLOW
	TEMPORARY DITCH CHECK
	STONE DUMPED RIPRAP, CLASS A3
	TREE REMOVAL, ACRES
	EROSION CONTROL BLANKET OVER SEEDING, CLASS 3 (SPECIAL)

FILE NAME = e:\stuser\1086008\Bureau\County\Design\swppp\c81.dgn

WILLET, HOFMANN & ASSOCIATES, INC.
CONSULTING ENGINEERS
 609 East Second Street, Dixon, IL 61021
 Phone 815.284.3381 Fax 815.294.3385
 Design Firm # 184-00918
 www.willett-hofmann.com

USER NAME =	DESIGNED -	REVISED -
	DRAWN -	REVISED -
PLOT SCALE =	CHECKED -	REVISED -
PLOT DATE =	DATE -	REVISED -

BUREAU COUNTY
BRIDGE REPLACEMENT
FAS 188 (C.H. 8) OVER IAIS RAILROAD & THE HENNEPIN CANAL

SWPPP - C.H. 8

F.A.S.	SECTION	COUNTY	TOTAL SHEETS	SHEET NO.
188	05-00195-00-BR	BUREAU	127	56
STA. 39+20 TO STA. 45+00			CONTRACT NO. 01380	
FED. ROAD DIST. NO. 1 ILLINOIS FED. AID PROJECT BRS-0188(118)				