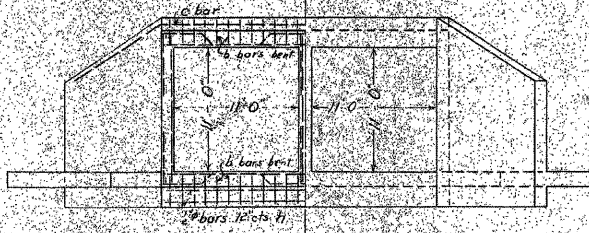
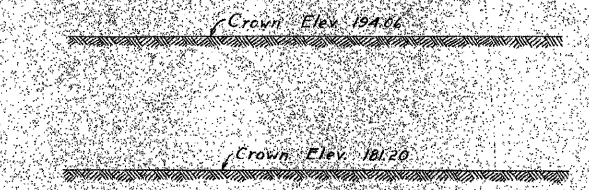
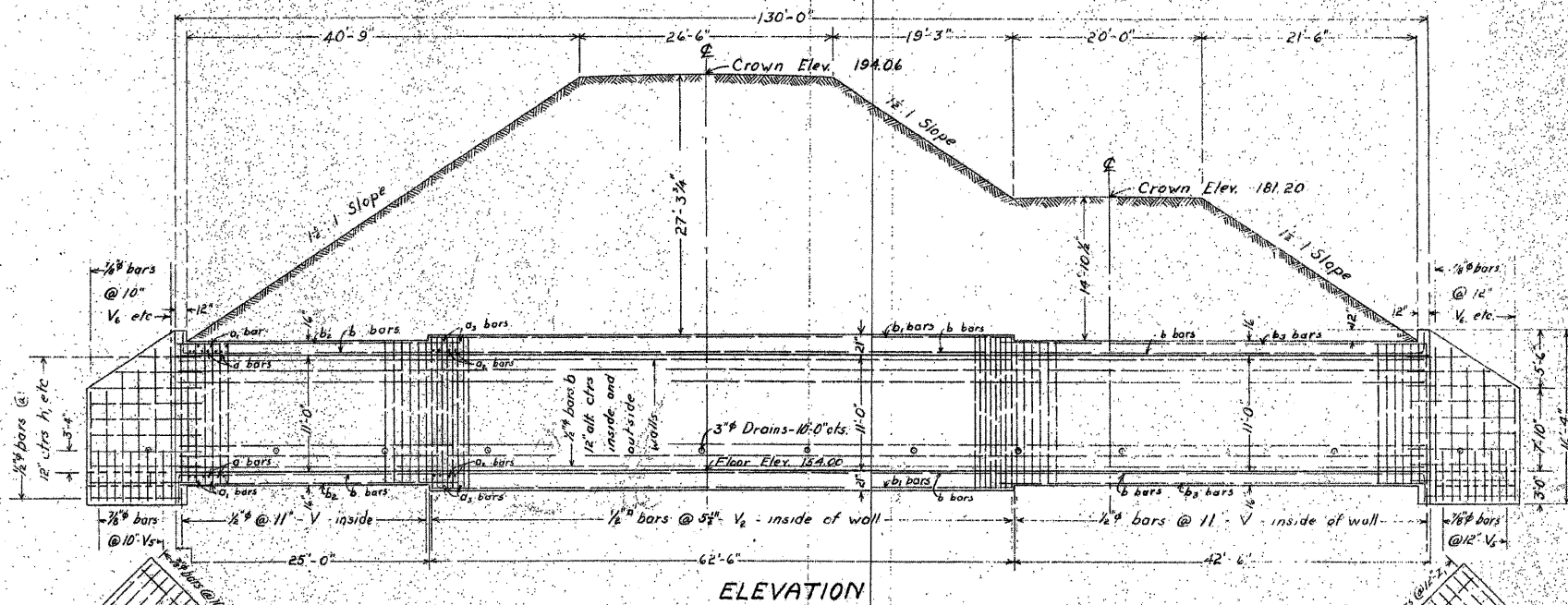


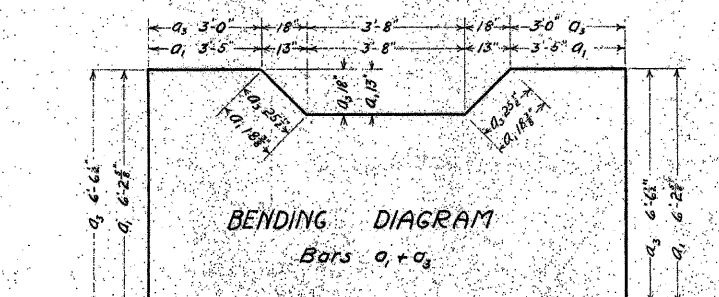
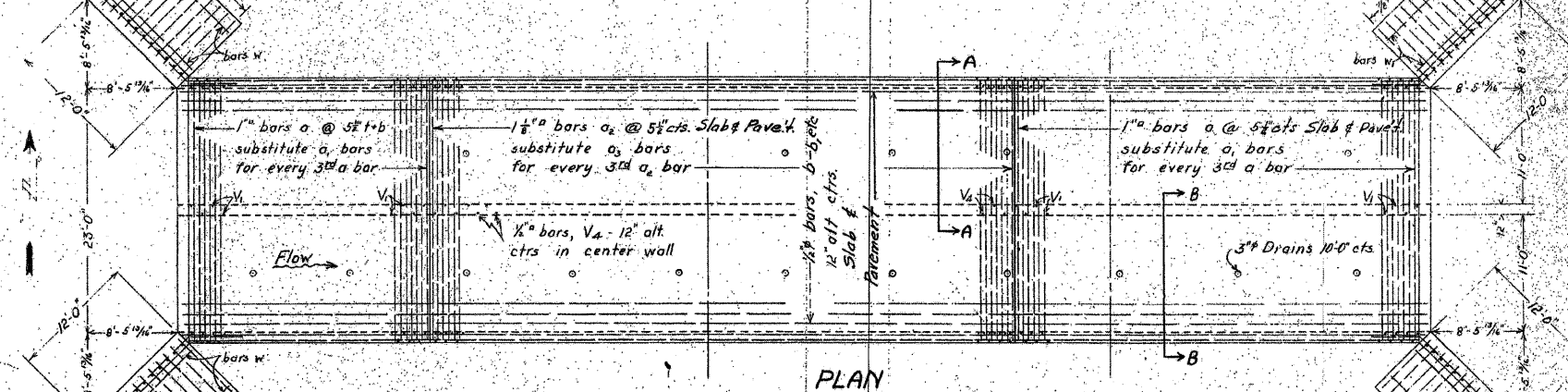
B.M. - Brass Plug in top of Lock No. 19, I.M. Canal, Elev 184.00  
 Existing Structure - Concrete Floor on I-beams - Concrete Abuts.  
 Abuts. may be left in place, Contractor to remove floor

STATE OF ILLINOIS  
 DEPARTMENT OF PUBLIC WORKS & BUILDINGS  
 DIVISION OF HIGHWAYS

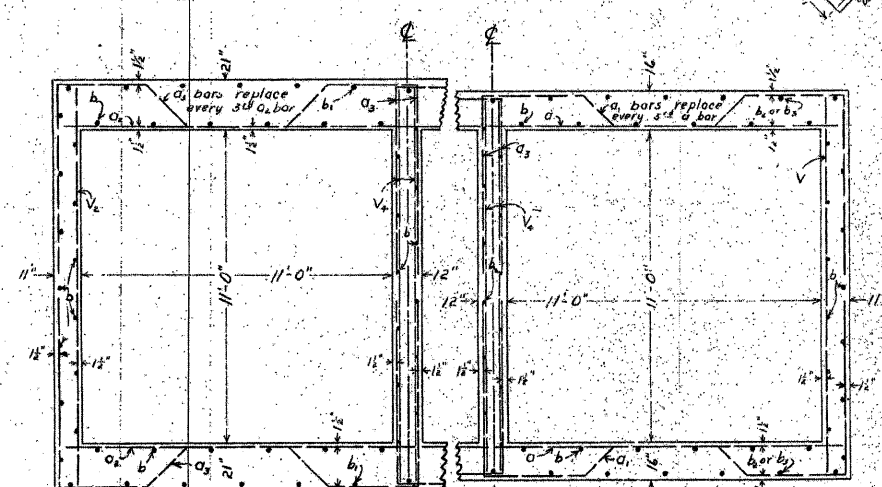
SHEET NO. /  
 SHEETS



SHOWING REINFORCEMENT SHOWING OUTLINES  
 END ELEVATION



BENDING DIAGRAM  
 Bars a<sub>1</sub> + a<sub>2</sub>



SECTION A-A

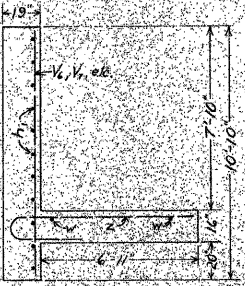
SECTION B-B

Class X Concrete to be used throughout.  
 All reinforcing steel to be wired securely  
 in place before concrete is poured.

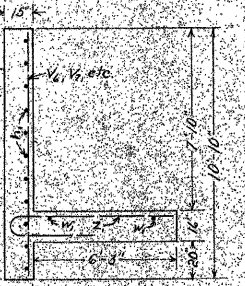
FOR  
 INFORMATION  
 ONLY

BILL OF MATERIAL

Bars	Number	Size	Length
a	196	1"Ø	24'-6"
a <sub>1</sub>	186	1"Ø	26'-0"
a <sub>2</sub>	182	1 1/8"Ø	24'-6"
a <sub>3</sub>	182	1 1/8"Ø	27'-0"
b	300	1/2"Ø	27'-6"
c	4	1/2"Ø	28'-0"
h	4	1/2"Ø	24'-0"
h <sub>1</sub>	44	1/2"Ø	13'-6"
h <sub>2</sub>	8	1/2"Ø	9'-9"
h <sub>3</sub>	8	1/2"Ø	5'-6"
v	148	1/2"Ø	13'-3"
v <sub>1</sub>	68	1/2"Ø	15'-3"
v <sub>2</sub>	272	1/2"Ø	14'-0"
v <sub>3</sub>	65	1/2"Ø	14'-0"
v <sub>4</sub>	52	3/8"Ø	6'-0"
v <sub>5</sub>	14	3/8"Ø	14'-6"
v <sub>6</sub>	12	3/8"Ø	13'-6"
v <sub>7</sub>	14	3/8"Ø	12'-0"
v <sub>8</sub>	12	3/8"Ø	10'-6"
w	4	1/2"Ø	11'-6"
w <sub>1</sub>	4	1/2"Ø	11'-6"
z	28	3/8"Ø	11'-6"
z <sub>1</sub>	24	3/8"Ø	10'-6"
Reinforcing Steel - Lbs 91400			
Class X Concrete - Cu Yds - 570.4			
b <sub>1</sub>	72	1/2"Ø	22'-3"
b <sub>2</sub>	24	1/2"Ø	29'-6"
b <sub>3</sub>	48	1/2"Ø	24'-9"



END OF  
 UPSTREAM WING



END OF  
 DOWNSTREAM WING

POND CREEK  
 S.A. RTE 8 SEC WB-15D  
 BUREAU COUNTY

COMPUTED	M. Thompson
CHECKED	H. J. E. [Signature]
DRAWN	M. Thompson
CHECKED	H. J. E. [Signature]
SPECIAL	
ASSEMBLED	
CHECKED	

EXAMINED: *Jan 8 1921*  
 B. F. Burch  
 BRIDGE ENGINEER  
 PASSED: *H. E. Surman*  
 ENGINEER OF DESIGN  
 APPROVED: *Frank J. Sheehy*  
 CHIEF HIGHWAY ENGINEER

EXISTING CULVERT PLANS  
 C.H. 8 OVER POND CREEK  
 STATION 32+61.61  
 S.N. 006-5031  
 WHA #1066D05

STRUCTURAL SHEET NO. 6A OF 6A SHEETS	F.A.S. RTE.	SECTION	COUNTY	TOTAL SHEETS	SHEET NO.
	188	05-00195-00-BR	BUREAU	127	66
CONTRACT NO. 87380					
FED. ROAD DIST. NO. 7 ILLINOIS FED. AID PROJECT BRS-0188(118)					

FILE NAME: s:\Struct\1065031\Bureau\Drawings\Double Barrel\Existing Plans.dgn