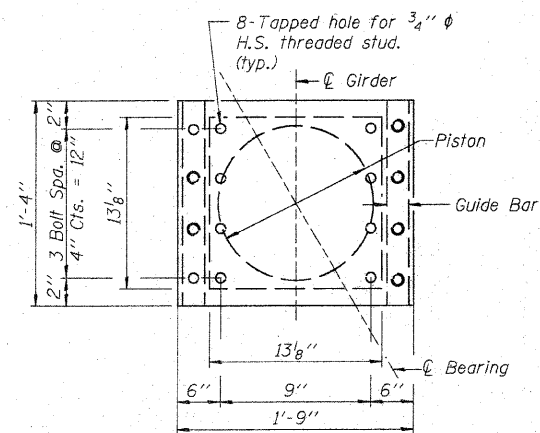
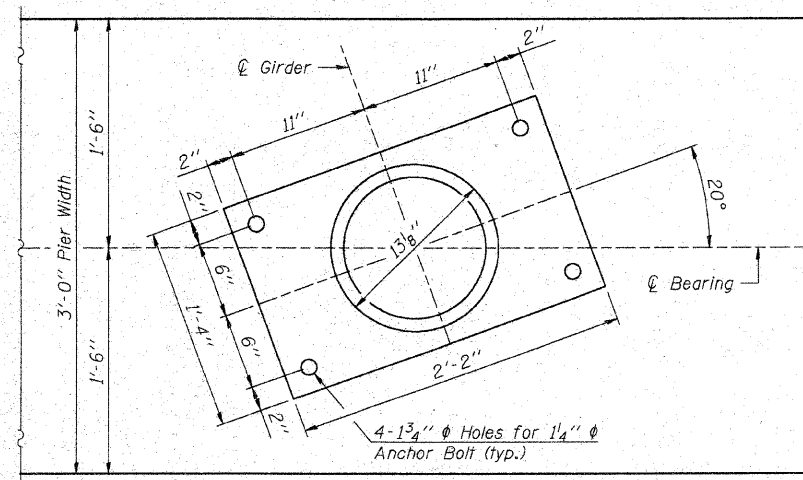


**GUIDED EXPANSION
FLOATING BEARING - 250K**
(Pier #1)

*Pier #1 height is based on 7" deep pot bearing, if different by supplier column height shall be adjusted accordingly.



**TOP BEARING PLATE AND
PISTON PLAN**



**BOTTOM BEARING PLATE AND
BASE CYLINDER PLAN**

POT Bearing DATA	
Service Loads	Pier #1 (Exp.)
Dead Load	183.2 ^k
Live Load	153.8 ^k
Vert. Design Load	337 ^k
Impact	34.3 ^k
Total	371.3 ^k
Long Load	0
Trans. Loads	
Wind	37.6 ^k
Earthquake	35.1 ^k
Hu=Factored Ultimate (Strength) Design Lateral Load	52.6 ^k
Expansion Length	81'-0"
Total Expansion	1/2"

NOTES:

All P's of the Bearing Assembly shall be AASHTO M 270M Grade 50.

Base P. Thickness was determined by using a Pot ϕ of 13 3/8".

Cost of field drilling is included with "Furnishing & Erecting Structural Steel".

Two 1/8 in. adjusting shims shall be provided for each bearing in addition to all other plates required and placed as shown on bearing details.

BILL OF MATERIAL

Item	Unit	Total
Anchor Bolts, 1 1/4"	Each	20
High Load Multi-Rotation Bearings, Guided Expansion, 400k	Each	5

HLMR GUIDED EXPANSION BEARING DETAILS
C.H. 8 OVER IOWA INTERSTATE RAILROAD
& THE HENNEPIN CANAL
STATION 36+00
S.N. 006-3247
WHA #1066D05

STRUCTURAL SHEET NO. 21B OF 33B SHEETS	F.A.S. RTE.	SECTION	COUNTY	TOTAL SHEETS	SHEET NO.
	188	05-00195-00-BR	BUREAU	127	87
FED. ROAD DIST. NO. 7 ILLINOIS			FED. AID PROJECT BRS-0188(118)		
CONTRACT NO. 87380					

FILE NAME = s:\Struct\186508\Bureau\County Drawings\1866PotBearings.dgn