

NOTES:

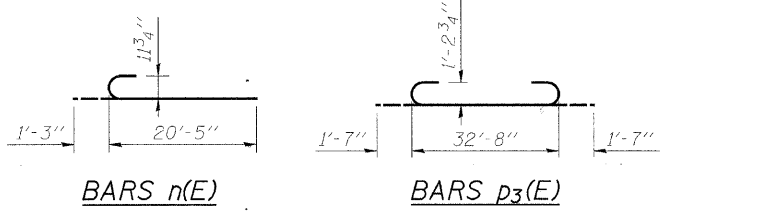
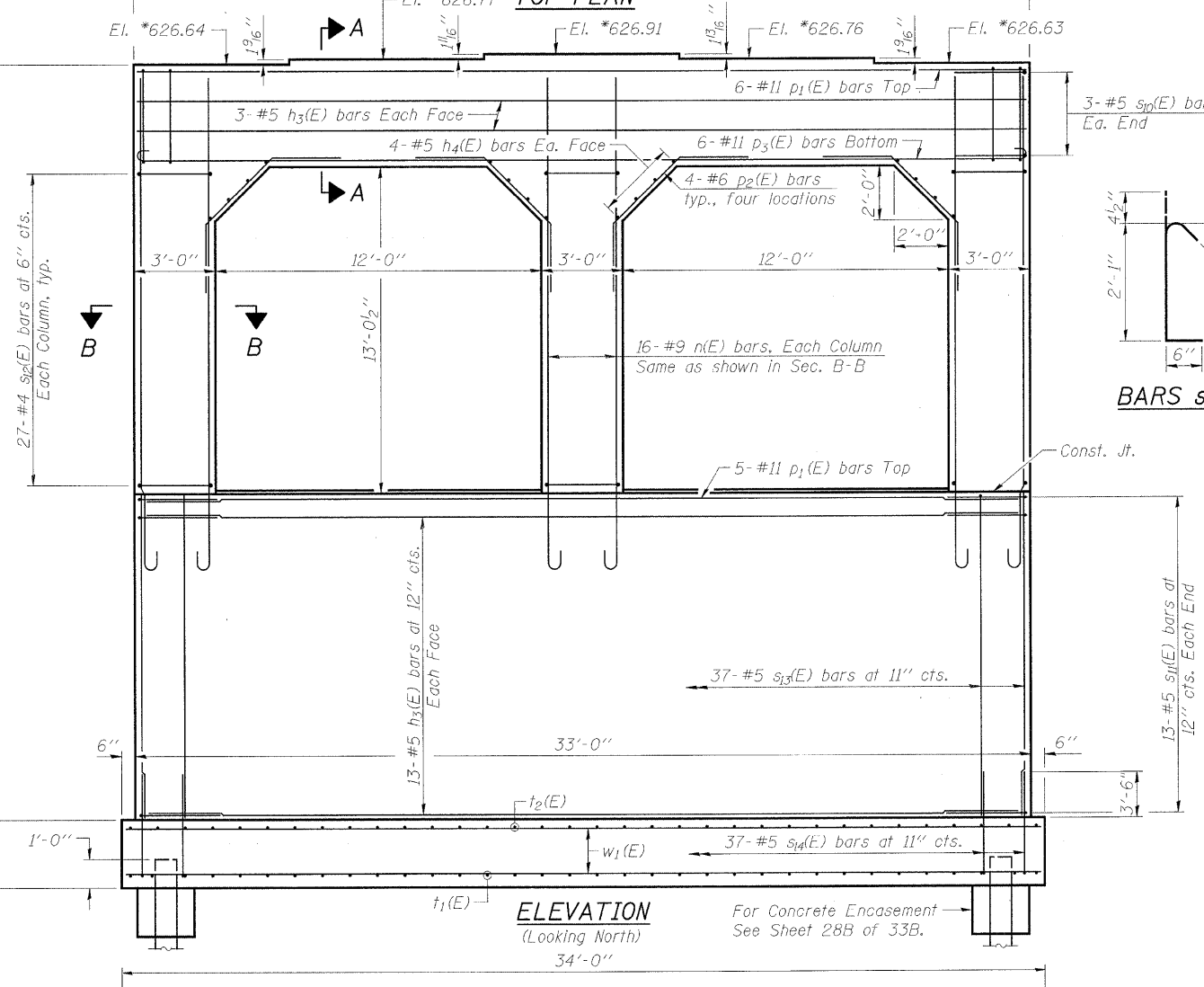
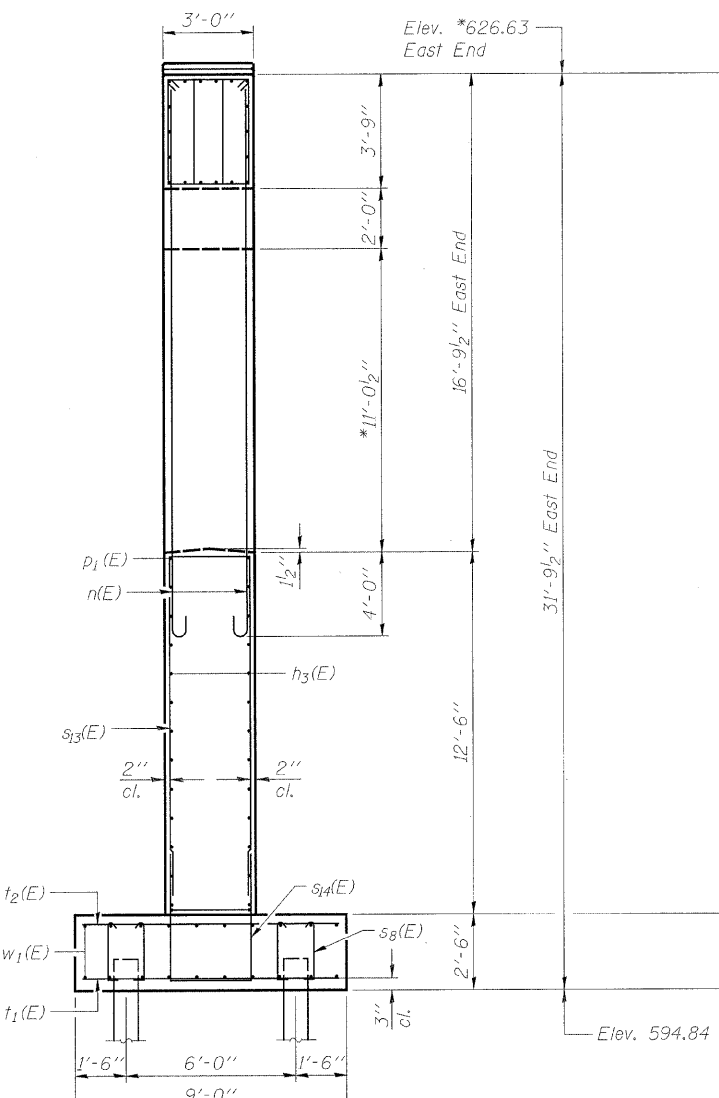
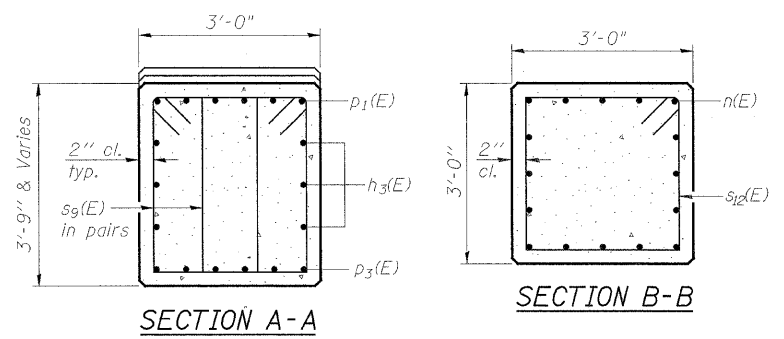
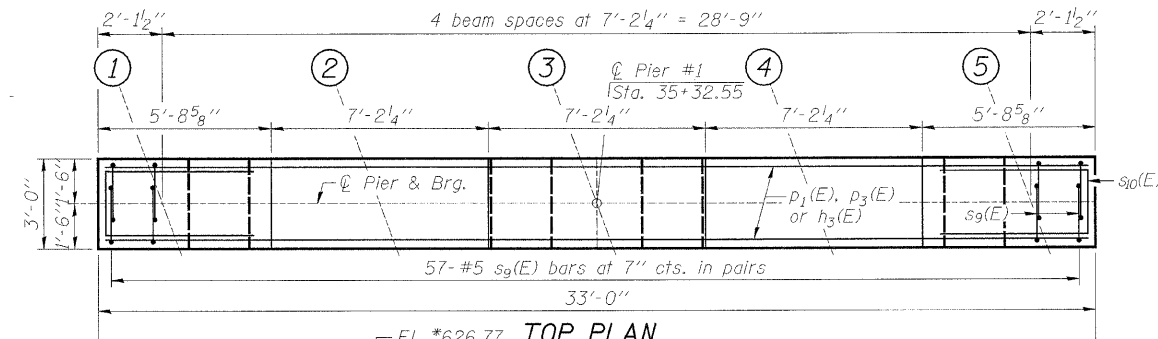
All exposed edges shall have 3/4" chamfer unless otherwise noted.

Space reinforcement in cap to miss anchor bolts.

Pour steps monolithically with cap.

For details of piles, see Structural Sheet 28B of 33B.

*Pier height is based on 7" deep pot bearing. If different by supplier, then column height shall be adjusted accordingly.

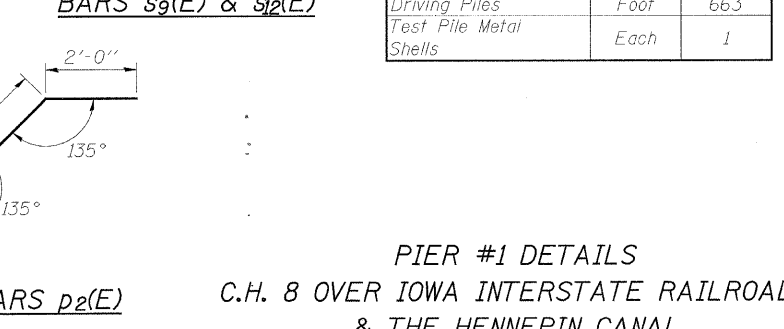
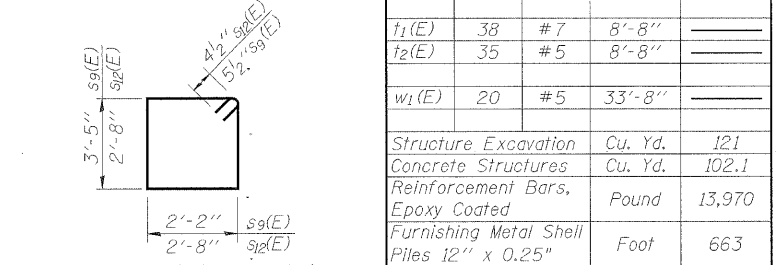


BILL OF MATERIAL - PIER #1

Bar	No.	Size	Length	Shape
h3(E)	32	#5	32'-8"	
h4(E)	16	#5	2'-8"	
n(E)	48	#9	21'-8"	
p1(E)	11	#11	32'-8"	
p2(E)	16	#6	7'-4"	
p3(E)	6	#11	35'-10"	
s8(E)	236	#4	2'-11 1/2"	
s9(E)	114	#5	11'-11"	
s10(E)	6	#5	8'-7"	
s11(E)	26	#5	8'-6"	
s12(E)	81	#4	11'-5"	
s13(E)	37	#5	27'-0"	
s14(E)	37	#5	14'-2"	
t1(E)	38	#7	8'-8"	
t2(E)	35	#5	8'-8"	
w1(E)	20	#5	33'-8"	

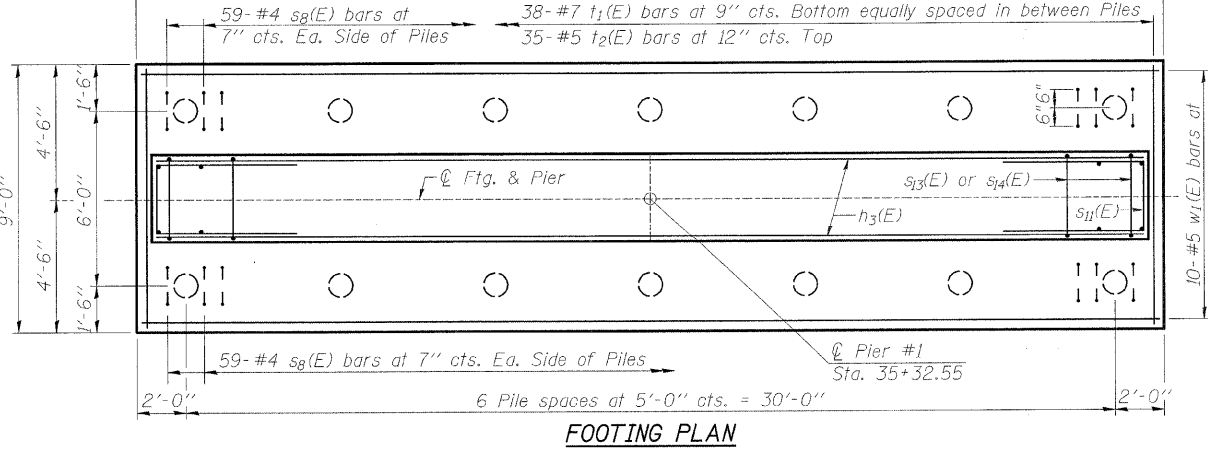
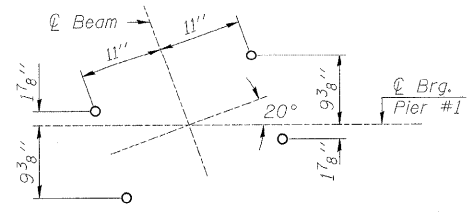
A & B DIMENSIONS

Bar	A	B
s10(E)	2'-7"	3'-0"
s11(E)	2'-6"	3'-0"
s13(E)	2'-8"	12'-2"
s14(E)	2'-8"	5'-9"



PILE DATA

Type: Metal Shell - 12 in. dia. x 0.25 in. walls
 Nominal Required Bearing: 355 k
 Factored Resistance Available: 150 k
 Est. Length: 51'
 No. Production Piles: 13
 No. Test Piles: 1



PIER #1 DETAILS
 C.H. 8 OVER IOWA INTERSTATE RAILROAD
 & THE HENNEPIN CANAL
 STATION 36+00
 S.N. 006-3247
 WHA #1066D05

STRUCTURAL SHEET NO. 25B OF 33B SHEETS	F.A.S. RTE.	SECTION	COUNTY	TOTAL SHEETS	SHEET NO.
	188	05-00195-00-BR	BUREAU	127	91
	CONTRACT NO. 87380				
FED. ROAD DIST. NO. 7 ILLINOIS FED. AID PROJECT BRS-0188(118)					

FILE NAME = s:\s\proj\1066D05\p\c\c\Drawings\1066Pier1.dgn