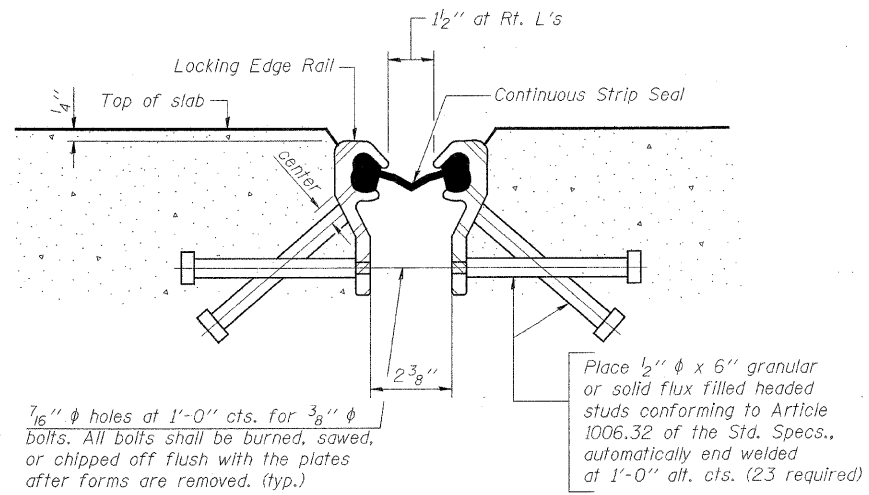


SECTION A-A



SECTION THRU STRIP SEAL JOINT

GENERAL NOTES

Furnish PJS steel plates in segments of 20 feet maximum length. Maximum space between installed segments shall be 3/16". Seal space with silicone sealant suitable for structural steel.

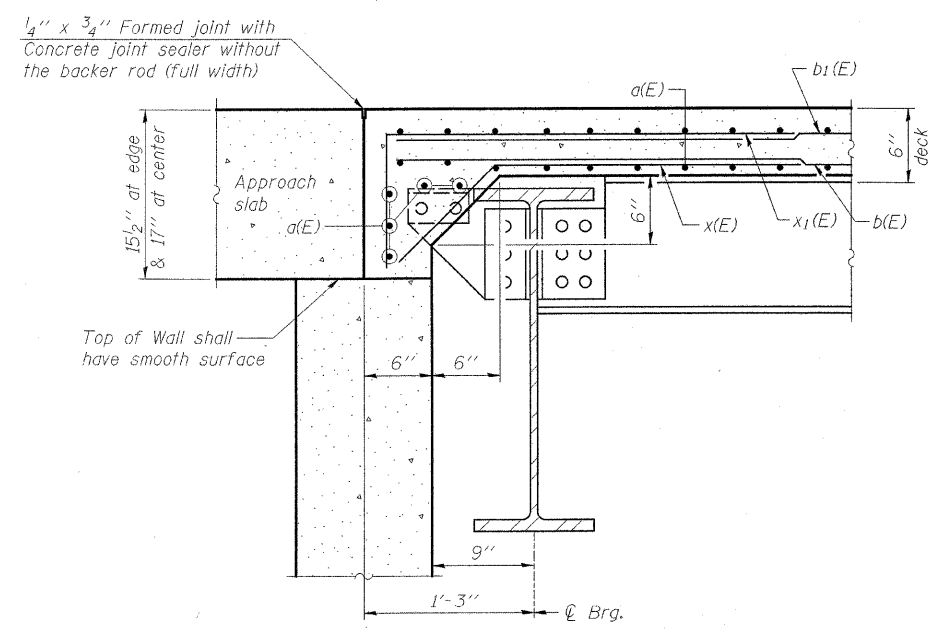
The strip seal shall be made continuous and shall have a minimum thickness of 1/4". The configuration of the strip seal shall match the configuration of the Locking Edge Rails.

The height and thickness of the Locking Edge Rails shown are minimum dimensions. The actual configuration of the Locking Edge Rails and matching strip seal may vary from manufacturer to manufacturer. Flanged edge rails will not be allowed.

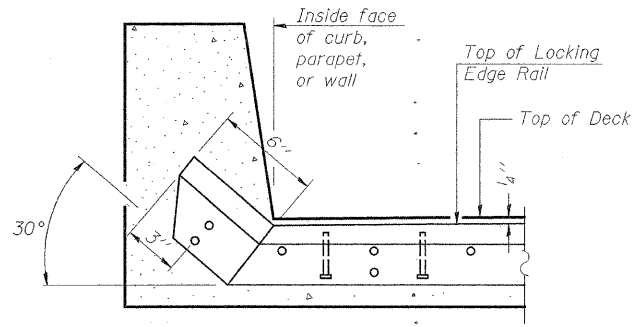
Locking Edge Rails may be spliced at slope discontinuities and stage construction joints.

The manufacturer's recommended installation methods shall be followed.

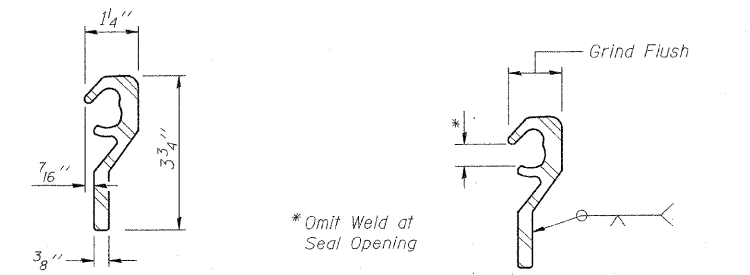
The joint opening and deck dimensions detailed on the superstructure are based on a preformed joint seal. If the contractor elects to use the alternate strip seal joint, the opening and deck dimensions shall be modified according to the dimensions detailed on this sheet. Required modifications shall be made at no additional cost to the State.



SECTION B-B



AT CURB
TYPICAL END TREATMENTS FOR STRIP SEAL



LOCKING EDGE RAIL LOCKING EDGE RAIL SPLICE
The inside of the Locking Edge Rail groove shall be free of weld residue.

BILL OF MATERIAL

Item	Unit	Total
Preformed Joint Strip Seal	Foot	24

STRIP SEAL DETAILS
T.R. 271A OVER WEST BUREAU CREEK
STATION 60+00
S.N. 006-4376
WHA #1066D05

STRUCTURAL SHEET NO. 7C OF 13C SHEETS	F.A.S. RTE.	SECTION	COUNTY	TOTAL SHEETS	SHEET NO.
	188	05-00195-00-BR	BUREAU	127	120
	CONTRACT NO. 87380				
FED. ROAD DIST. NO. 7 ILLINOIS FED. AID PROJECT BRS-0188(118)					

FILE NAME: s:\Struct\18660050\Drawings\HistoricalStructures\StripSealDetails.dgn