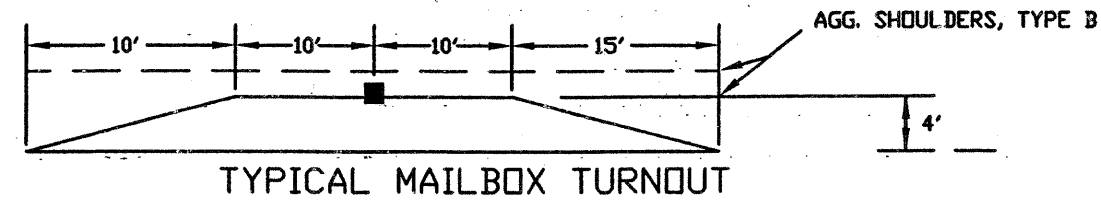


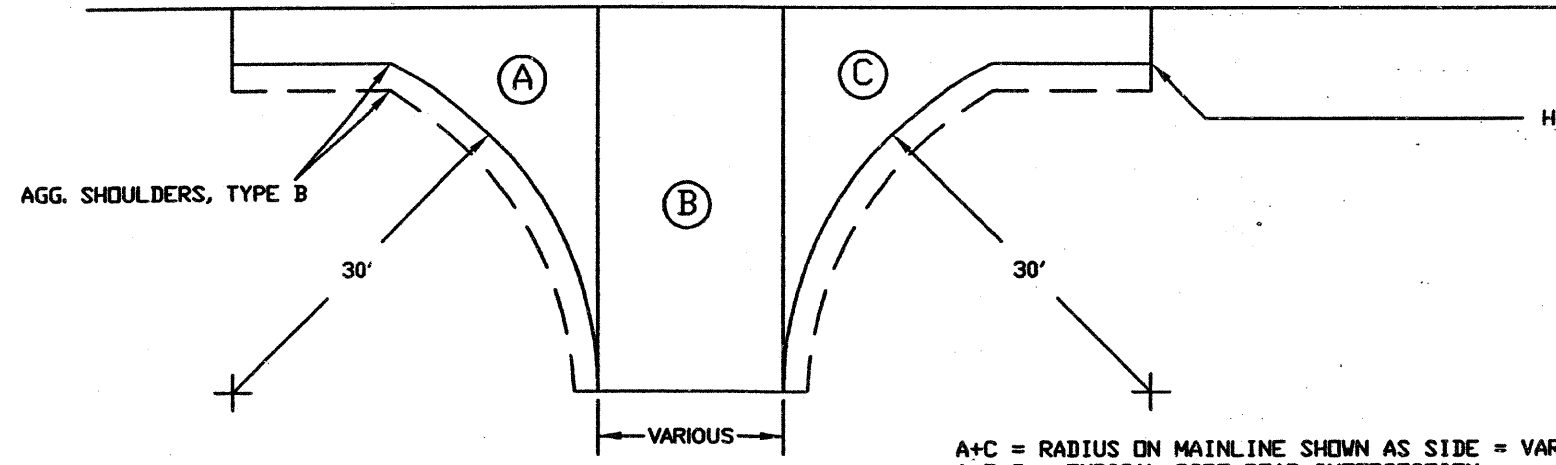
NOTE: ALL PRIVATE ENTRANCES, MAIL BOX TURNOUTS AND SIDE ROAD INTERSECTIONS SHALL BE PAID FOR AS INCIDENTAL HOT-MIX ASPHALT SURFACING = TOTAL 206 TON

NOTE: AGGREGATE AROUND ALL PRIVATE ENTRANCES, MAIL BOX TURNOUTS AND SIDE ROAD INTERSECTIONS SHALL BE CONSIDERED INCIDENTAL TO AGGREGATE SHOULDERS, TYPE B AND PLACED AS DIRECTED BY THE ENGINEER.



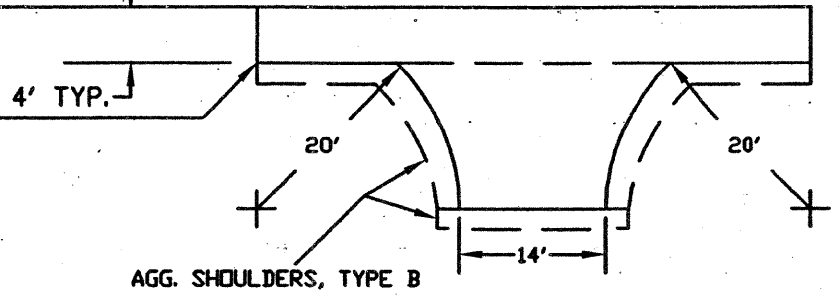
TYPICAL MAILBOX TURNOUT

TYPICAL INTERSECTION



A+C = RADIUS ON MAINLINE SHOWN AS SIDE = VAR
A+B+C = TYPICAL SIDE ROAD INTERSECTION

TYPICAL PRIVATE & FIELD ENTRANCES



TYPICAL MAILBOX TURNOUT

| STATION | SIDE | SQ. YD. | TON |
|-----------------|------|---------|-----|
| 56+95 | RT | 20 | 4 |
| 64+78 | RT | 20 | 4 |
| 85+78 | RT | 20 | 4 |
| 107+88 | RT | 20 | 4 |
| TOTAL = 16 TONS | | | |

TYPICAL FIELD ENTRANCES

| STATION | RT/LT | TYPE | PROPOSED | SQ. YD. | TON |
|---------|-------|------|----------|---------|-----|
| 50+33 | LT. | FE | AGG | — | 5 |
| 50+54 | RT. | FE | AGG | — | 5 |
| 61+73 | LT. | FE | AGG | — | 5 |
| 63+61 | RT. | FE | AGG | — | 5 |
| 83+39 | RT. | FE | AGG | — | 5 |
| 86+85 | LT. | FE | AGG | — | 5 |
| 92+63 | RT. | FE | AGG | — | 5 |
| 95+11 | RT. | FE | AGG | — | 5 |
| 96+20 | LT. | FE | AGG | — | 5 |
| 115+16 | RT. | FE | AGG | — | 5 |
| 115+57 | LT. | FE | AGG | — | 5 |
| 145+31 | LT. | FE | AGG | — | 5 |
| 150+14 | RT. | FE | AGG | — | 5 |
| 151+00 | LT. | FE | AGG | — | 5 |
| 169+00 | RT. | FE | AGG | — | 5 |
| 174+29 | LT. | FE | AGG | — | 5 |
| 182+14 | RT. | FE | AGG | — | 5 |

TOTAL AGGREGATE FOR FIELD ENTRANCES = 85 TON. THIS QUANTITY IS INCLUDED IN AGGREGATE SHOULDERS, TYPE B TOTAL QUANTITY.

TYPICAL INTERSECTION - SIDE ROADS

| STATION | SIDE | WIDTH | SQ. YD. | TON |
|-------------------|-------------------|-------|---------|-----|
| 25+58 | Frontage RD LT | 20' | 312 | 53 |
| 25+77 | Frontage RD RT | 20' | 243 | 41 |
| 41+50 | TR 1B Chebanse Rd | 20' | 243 | 41 |
| *76+80 | TR 132 RT | 18' | 27 | 8 |
| 76+88 | TR 150 LT | 18' | 138 | 18 |
| TOTALS = 161 TONS | | | | |

* THIS INTERSECTION SHALL RECEIVE ONLY A FOUR FOOT PAVED APRON.

TYPICAL PRIVATE ENTRANCES

| STATION | RT/LT | TYPE | PROPOSED | SQ. YD. | TON |
|----------|-------|------|----------|---------|-----|
| ** 57+16 | RT. | PE. | HMA | 28 | 7 |
| * 64+92 | LT. | PE. | HMA | 15 | 5 |
| * 66+43 | LT. | PE. | HMA | 15 | 5 |
| ** 86+09 | RT. | PE. | HMA | 28 | 7 |
| * 107+70 | RT. | PE. | HMA | 15 | 5 |

TOTAL = 29 TONS

* THESE ENTRANCES SHALL RECEIVE ONLY A FOUR FOOT PAVED APRON.
** THESE ENTRANCES SHALL RECEIVE ONLY A SIX FOOT PAVED APRON.