

STATE OF ILLINOIS
DEPARTMENT OF TRANSPORTATION
PLANS FOR PROPOSED
HIGHWAY BRIDGE PROGRAM
LASALLE COUNTY
SECTION 09-00658-00-BR
F.A.S. 271 (CH 25) OVER BRANCH OF NETTLE CREEK
PROJECT NO. BRS-0271(103)
JOB NUMBER C-93-077-10

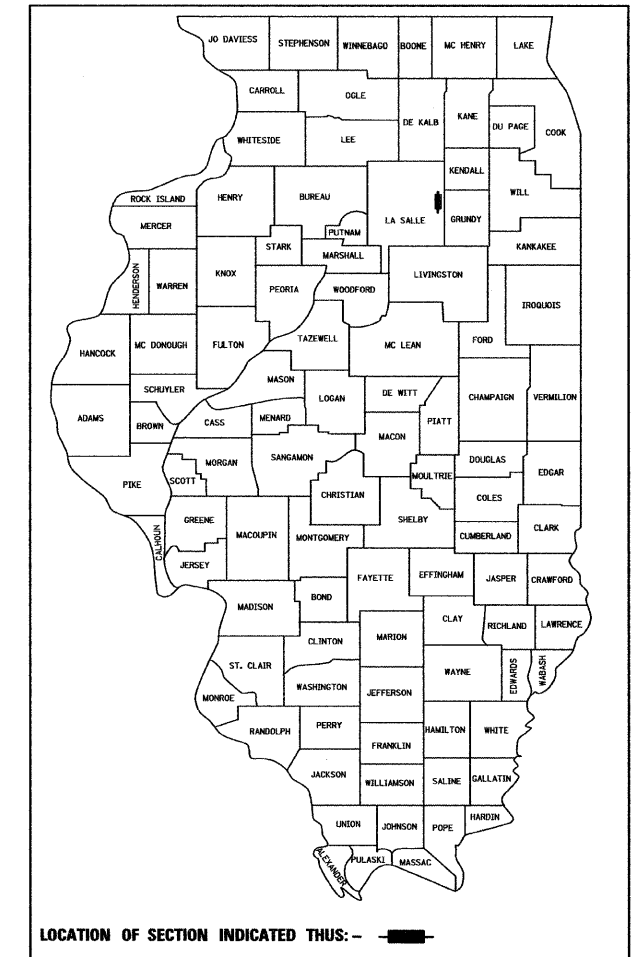
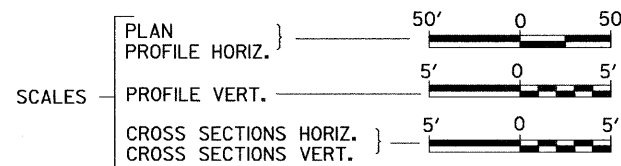
F.A.S. RTE.	SECTION	COUNTY	TOTAL SHEETS	SHEET NO.
271	09-00658-00-BR	LASALLE	39	1
FED. ROAD DIST. NO. 7		ILLINOIS	CONTRACT NO. 87451	

INDEX OF SHEETS

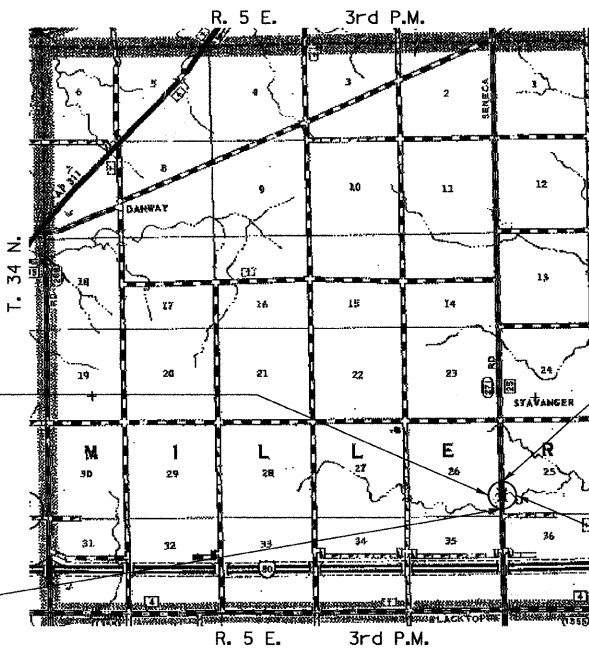
SHEET NO.	DESCRIPTION
1.	COVER SHEET
2.	GENERAL NOTES, DETAILS, TYPICAL SECTIONS
3.-4.	SUMMARY OF QUANTITIES, SCHEDULES OF QUANTITIES
5.	TRAFFIC CONTROL PLAN
6.	STORM WATER POLLUTION PREVENTION PLAN
7.	PLAN AND PROFILE
8.-29.	STRUCTURE PLANS AND SOIL BORING LOGS
30.-31.	EXISTING STRUCTURE PLANS
32.-39.	CROSS SECTIONS

REQUIRED HIGHWAY STANDARDS

000001-05	STANDARD SYMBOLS, ABBREVIATIONS AND PATTERNS
280001-05	TEMPORARY EROSION CONTROL SYSTEMS
420401-08	BRIDGE APPROACH PAVEMENT CONNECTOR
515001-03	NAME PLATE FOR BRIDGES
601101-01	CONCRETE HEADWALL FOR PIPE DRAIN
630301-05	SHOULDER WIDENING FOR TYPE 1 (SPECIAL) GUARDRAIL TERMINALS
631032-05	TRAFFIC BARRIER TERMINAL, TYPE 6A
635006-03	REFLECTOR AND TERMINAL MARKER PLACEMENT
635011-02	REFLECTOR MARKER AND MOUNTING DETAILS
701901-01	TRAFFIC CONTROL DEVICES
780001-02	TYPICAL PAVEMENT MARKINGS
BLR 21-8	TYPICAL APPLICATION OF TRAFFIC CONTROL DEVICES FOR CONSTRUCTION ON RURAL LOCAL HIGHWAYS



PROPOSED STRUCTURE NO. 050-3598
 SINGLE SPAN 42" P.P.C. I-BEAM WITH
 CONCRETE DECK SUPERSTRUCTURE
 ON CONC. INTEGRAL ABUTMENTS,
 62'-0" BK. TO BK. AND 33'-0" O. TO O.,
 15° SKEW LT. AH.



SECTION 09-00658-00-BR
 ENDS
 STATION 24+00.00

EXISTING STRUCTURE 050-3031
 SINGLE SPAN RC SLAB ON RC T-BEAM SUPER-
 STRUCTURE WITH SINGLE ELEMENT CONC. RAIL
 ON CURB WITH STEEL WT RAIL ADDED INSIDE OF
 ORIGINAL CONC. RAIL, SUPPORTED ON CONCRETE
 CLOSED ABUTMENTS ON UNTREATED TIMBER PILES,
 32'-0" BK TO BK, AND 28'-4" O TO O DECK,
 NO SKEW. TO BE REMOVED

SECTION 09-00658-00-BR
 BEGINS
 STATION 16+75.00

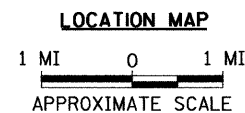
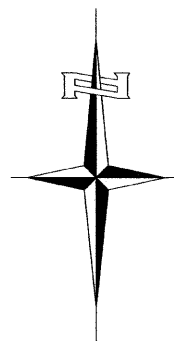
UTILITY COMPANIES

ComED
 JOLIET, ILLINOIS

AT&T
 JOLIET, ILLINOIS

J.U.L.I.E.
 JOINT UTILITY LOCATION INFORMATION FOR EXCAVATION
 1-800-892-0123
 OR 811

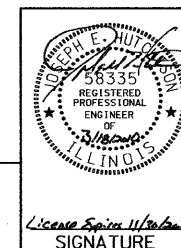
CONTRACT NO. 87451



NET LENGTH OF PROJECT = 725.00 FEET = 0.137 MILES
 DESIGN CLASSIFICATION: MAJOR-COLLECTOR (NON-URBAN)
 DESIGN ADT = 1730 (2030)
 DESIGN SPEED = 50 MPH

Hutchison Engineering, Inc.
 JACKSONVILLE ILLINOIS
 SHOREWOOD ILLINOIS

2010 JOB#2655



License Expires 11/30/2011
 SIGNATURE

ENGINEER'S SEAL

PLANS DESIGNED IN ACCORDANCE WITH BUREAU
 OF LOCAL ROADS AND STREETS MANUAL GUIDELINES
 FOR TWO LANE RURAL COLLECTORS - RECONSTRUCTION

APPROVED March 23 2010

James A. Kasper
 LASALLE COUNTY ENGINEER

PASSED 3-25 2010

Justin T. [Signature]
 DISTRICT THREE IMPLEMENTATION ENGINEER

Released For
 Bid Based on
 Limited Review 3-25 2010

Duane R. [Signature]
 DEPUTY DIRECTOR OF HIGHWAYS,
 REGION TWO ENGINEER

STATE OF ILLINOIS
 DEPARTMENT OF TRANSPORTATION