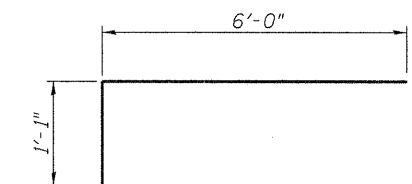
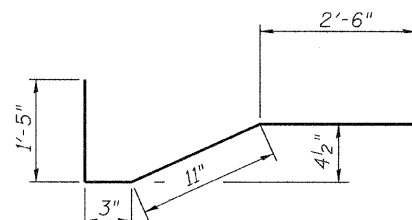


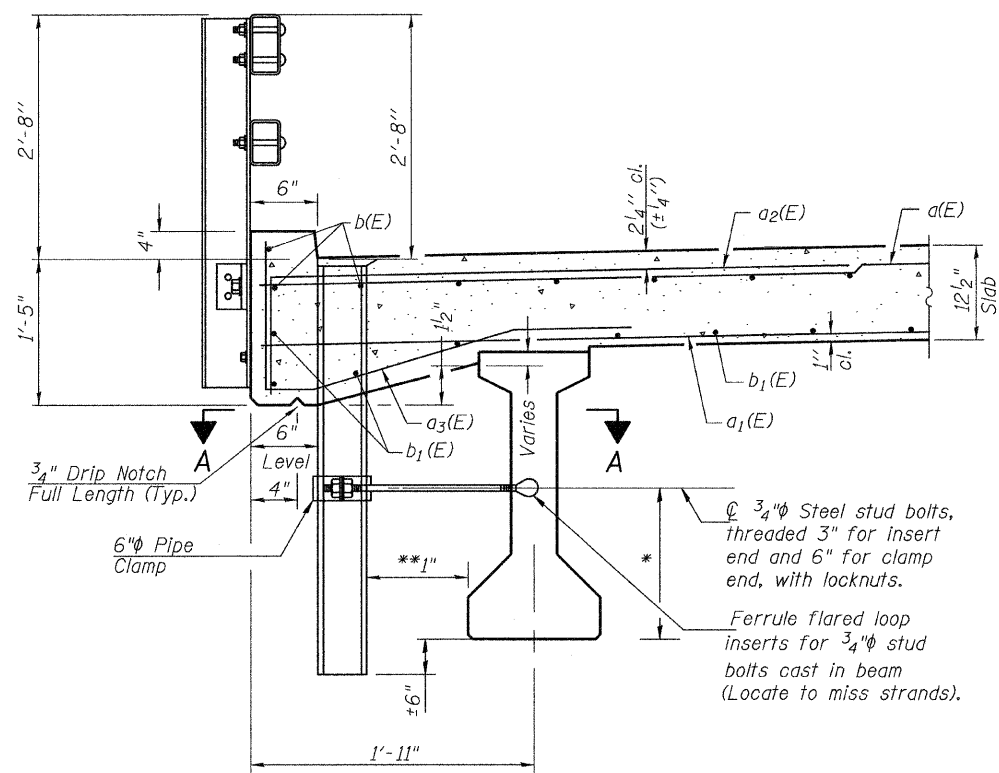
RAIL POST SPACING



BAR a2(E)



BAR a3(E)

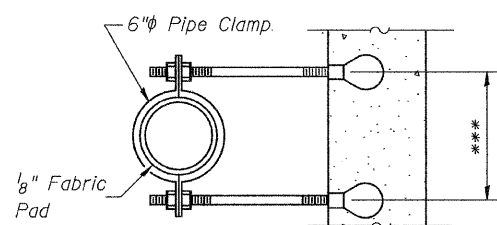


* For insert locations See sheet 12 of 22.
 ** Tilt Floor Drain as necessary to maintain clearance.

SECTION THRU PARAPET

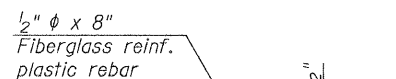
See Sheet 10 of 22 for Rail Post Anchor Details

Notes:
 Fiberglass pipe shall conform to ASTM D2996, with short-time rupture strength hoop tensile stress of 30,000 p.s.i. minimum.
 The exterior surfaces of the floor drains shall be coated or pigmented by the manufacturer with a color that matches the concrete.
 The clamping device and inserts shall be galvanized according to AASHTO M 232. Cost of clamping device and galvanizing included with Floor Drains.

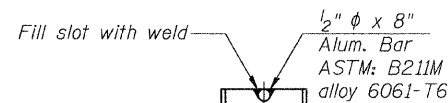


SECTION A-A

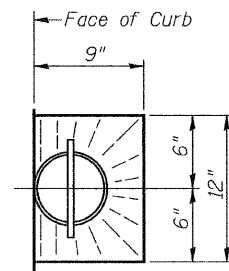
***Dimension as required by Pipe Clamp



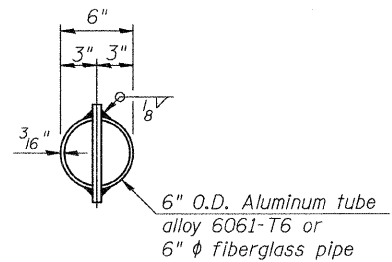
FIBERGLASS PIPE



ALUMINUM TUBE

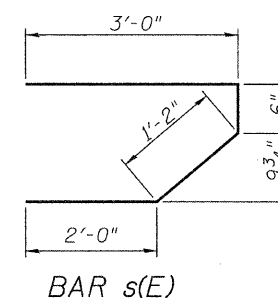


TOP PLAN

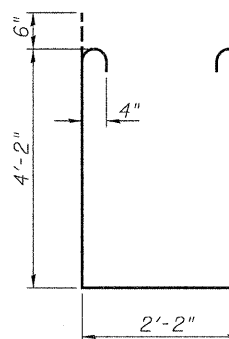


TOP PLAN

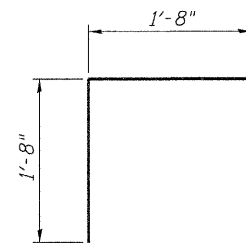
(Showing aluminum tube)



BAR s(E)



BAR s1(E)



BAR v(E)

SUPERSTRUCTURE BILL OF MATERIAL

Bar	No.	Size	Length	Shape
a(E)	107	#5	32'-9"	—
a1(E)	75	#5	31'-9"	—
a2(E)	214	#5	7'-1"	—
a3(E)	108	#5	5'-1"	—
a4(E)	4	#5	33'-8"	—
b(E)	72	#5	31'-9"	—
b1(E)	99	#5	21'-9"	—
m(E)	10	#6	33'-9"	—
m1(E)	24	#6	8'-10"	—
m2(E)	10	#6	3'-9"	—
m3(E)	4	#6	9"	—
s(E)	72	#5	6'-8"	—
s1(E)	58	#4	11'-6"	—
v(E)	68	#5	3'-4"	—
① Reinforcement Bars, Epoxy Coated			Pound	15,130
Concrete Superstructure			Cu. Yd.	106.6

① See Special Provisions

SUPERSTRUCTURE DETAILS

SHEET NO. 8	RTE.	SECTION	COUNTY	TOTAL SHEETS	SHEET NO.
22 SHEETS	CH 25	09-00658-00-BR	LASALLE	39	15
SN 050-3598			CONTRACT NO. 87451		
FED. ROAD DIST. NO. 7 ILLINOIS			FED. AID PROJECT BRS-0271(103)		