

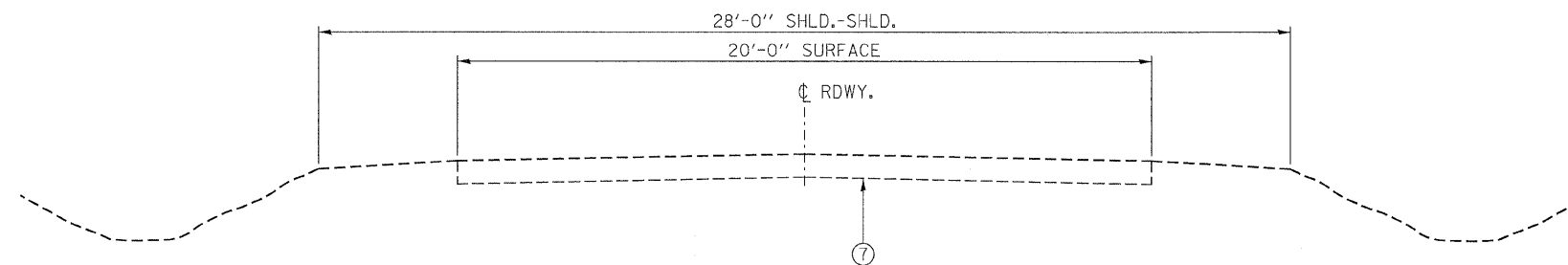
SUGGESTED CUT SECTION  
CONSTRUCT AS SHOWN IN  
STATION CROSS SECTIONS

**TYPICAL CROSS SECTION**

STA. 7+00 TO 12+60

TRANSITION FROM THE PROPOSED ROADWAY TO THE EXISTING  
ROADWAY IS TO BE CONSTRUCTED FROM STA. 7+00 TO 7+50 AND  
STA. 12+10 TO 12+60. SEE SHEET 10 FOR TRANSITION AT BRIDGE.

SUGGESTED FILL SECTION  
CONSTRUCT AS SHOWN IN  
STATION CROSS SECTIONS

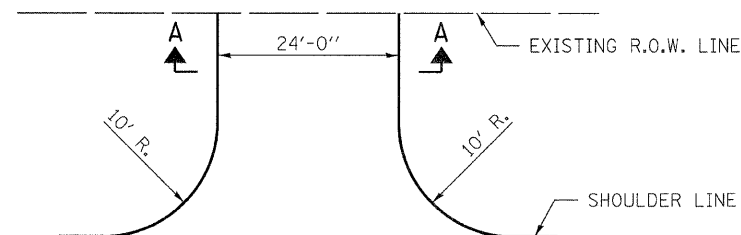


**EXISTING CROSS SECTION**

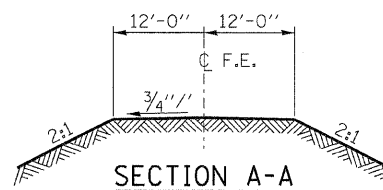
STA. 7+00 TO STA. 12+60

**LEGEND**

- ① STEEL PLATE BEAM GUARD RAIL, TYPE A / TRAFFIC BARRIER TERMINAL, TYPE 5A OR TYPE 1, SPECIAL (TANGENT)
- ② AGGREGATE SHOULDERS, TYPE B (6" DEPTH)
- ③ HMA SURFACE COURSE, MIX C, N50 (1 1/2" THICKNESS).
- ④ HMA BINDER COURSE, IL.-19, N50 (2 1/4" THICKNESS)
- ⑤ BITUMINOUS MATERIALS (PRIME COAT)
- ⑥ AGGREGATE BASE COURSE, TYPE A (12" THICKNESS)
- ⑦ EXISTING A-3 SURFACE ON AGGREGATE BASE



**FIELD ENTRANCE DETAIL**



**SECTION A-A**

FILE NAME = 090126-sh-t-typecross.dgn	USER NAME =	DESIGNED -	REVISED -	<b>STATE OF ILLINOIS LIVINGSTON COUNTY HIGHWAY DEPARTMENT</b>	<b>HLR</b>	<b>TYPICAL CROSS SECTIONS 1900 N. ROAD</b>	T.R.	SECTION	COUNTY	TOTAL SHEETS	SHEET NO.
		DRAWN - D.A.B.	REVISED -				119	09-24104-01-BR	LIVINGSTON	20	4
		CHECKED -	REVISED -				ROOKS CREEK ROAD DISTRICT			CONTRACT NO. 87453	
		DATE - 03/25/10	REVISED -				FED. ROAD DIST. NO.			ILLINOIS FED. AID PROJECT BROS-0105(049)	
	PLOT SCALE =			SCALE:	SHEET NO.	OF SHEETS	STA.	TO STA.			