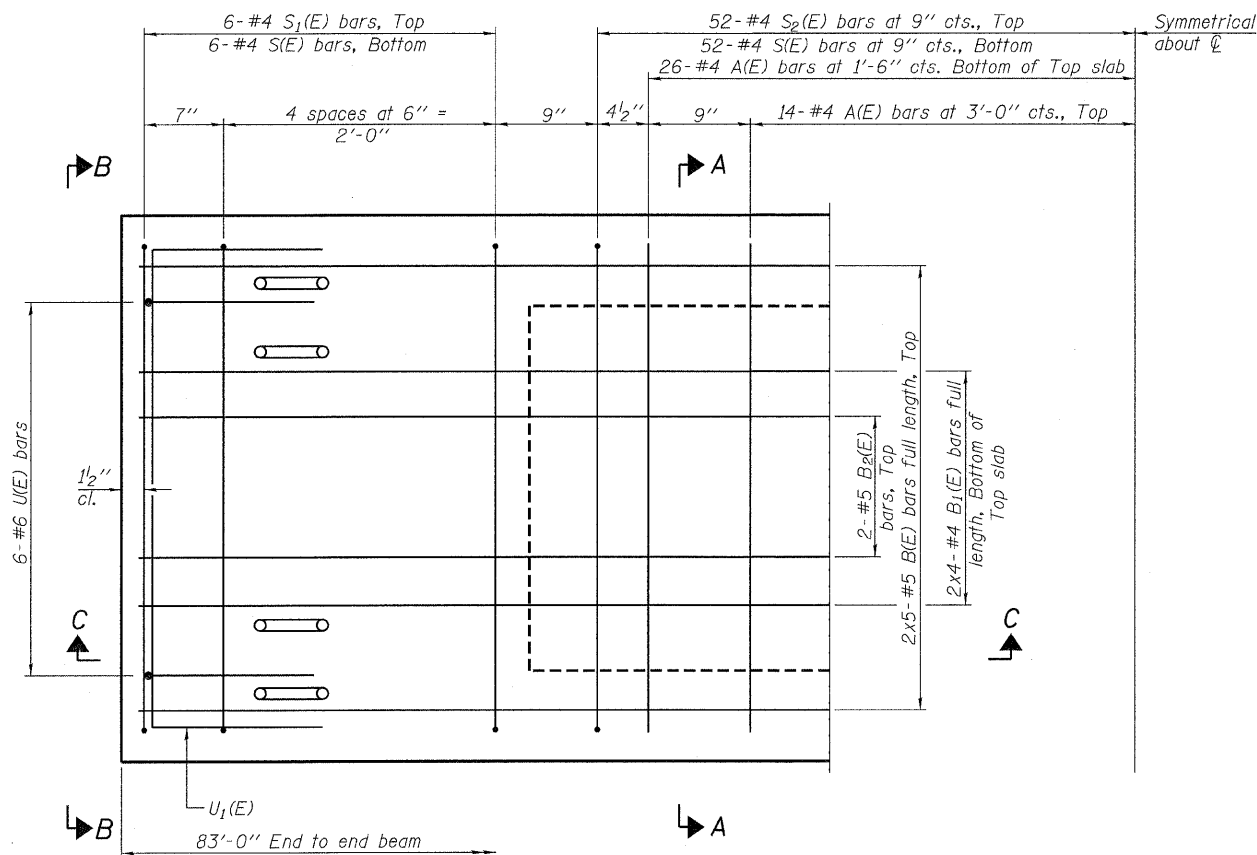


SECTION C-C

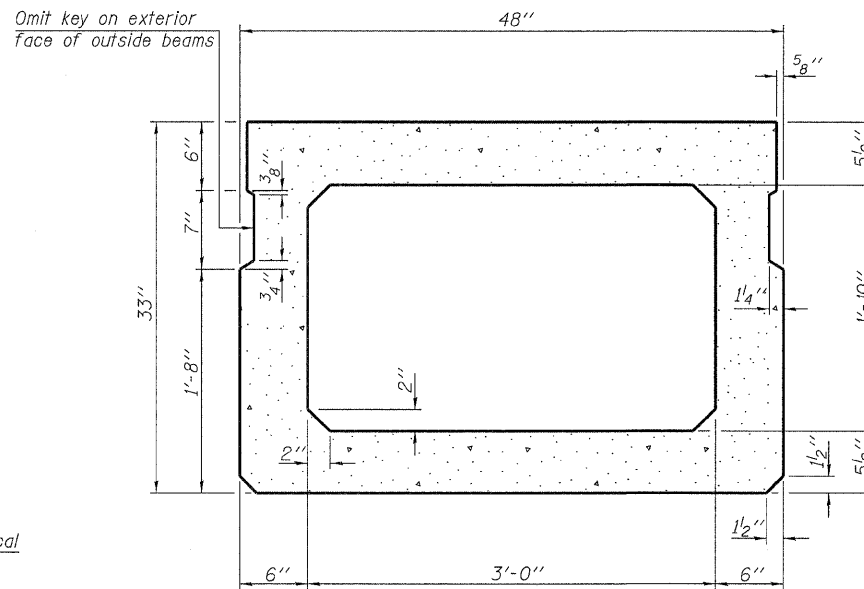


PLAN VIEW

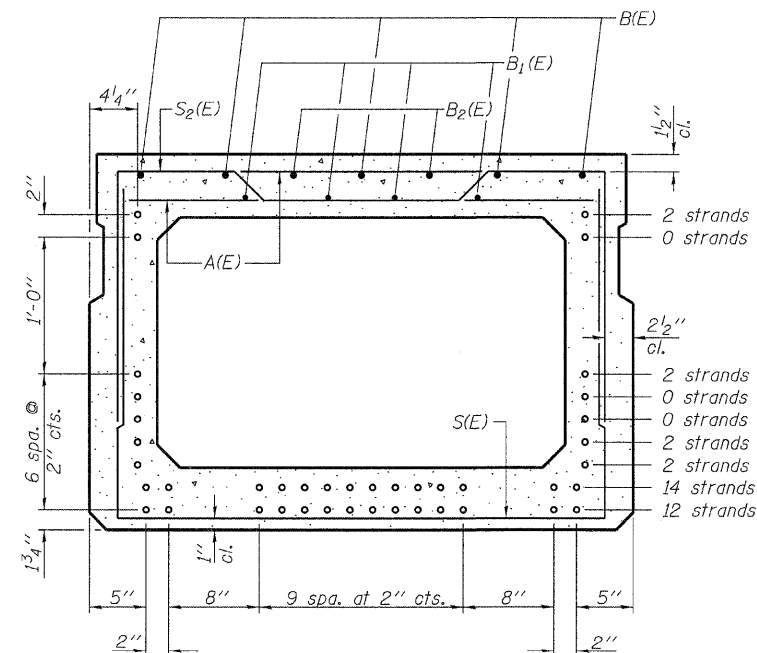
Note: Spacing of S(E) and S₂(E) bars may be adjusted up to 4" in the immediate area of the transverse tie diaphragms to miss the block outs for the transverse ties.

MINIMUM BAR LAP

#4 bar = 2'-0"
#5 bar = 2'-6"

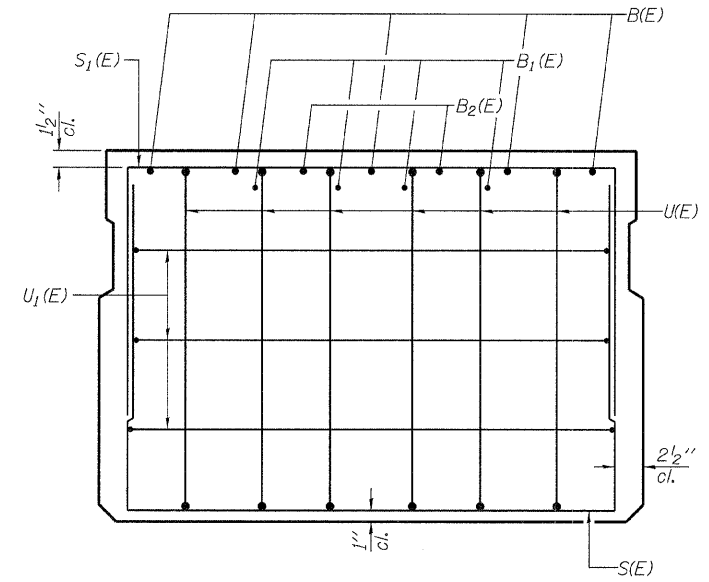


SECTION A-A
(Showing dimensions)



SECTION A-A

(Showing reinforcement and permissible strand locations)
Note: Place the number of strands specified in each row symmetrically about the centerline of beam in the permissible strand locations shown.



VIEW B-B

BAR LIST
ONE BEAM ONLY
(For information only)

Bar	No.	Size	Length	Shape
A(E)	80	#4	3'-7"	—
B(E)	10	#5	42'-7"	—
B ₁ (E)	8	#4	42'-4"	—
B ₂ (E)	4	#5	10'-0"	—
S(E)	116	#4	8'-5"	┌
S ₁ (E)	12	#4	7'-3"	┌
S ₂ (E)	104	#4	7'-6"	┌
U(E)	12	#6	5'-0"	┌
U ₁ (E)	6	#4	6'-0"	┌

Note: See sheets 13 & 14 for additional details and Bill of Material.

DESIGNED - M.G.B.
CHECKED - S.W.M.
DRAWN - D.A.B.
CHECKED - S.W.M.

PD-3348-0

11-1-09

SUPERSTRUCTURE
33" x 48" PPC DECK BEAM
STRUCTURE NO. 053-4199

PROJECT NUMBER: 09.0126.130	DATE: 03/25/10	T.R.	SECTION	COUNTY	TOTAL SHEETS	SHEET NO.
		119	09-24104-01-BR	LIVINGSTON	20	13
ROOKS CREEK ROAD DISTRICT		CONTRACT NO. 87453				
FED. ROAD DIST. NO.		ILLINOIS FED. AID PROJECT BROS-0105(049)				

HAMPTON, LENZINI AND RENWICK, INC.
CIVIL ENGINEERS • STRUCTURAL ENGINEERS • LAND SURVEYORS
3085 STEVENSON DRIVE, SUITE 201
SPRINGFIELD, ILLINOIS 62703
217.546.3400 www.hlrengineering.com
184.000000
ILLINOIS PROFESSIONAL DESIGN FIRM LS / PE / SE CORPORATION