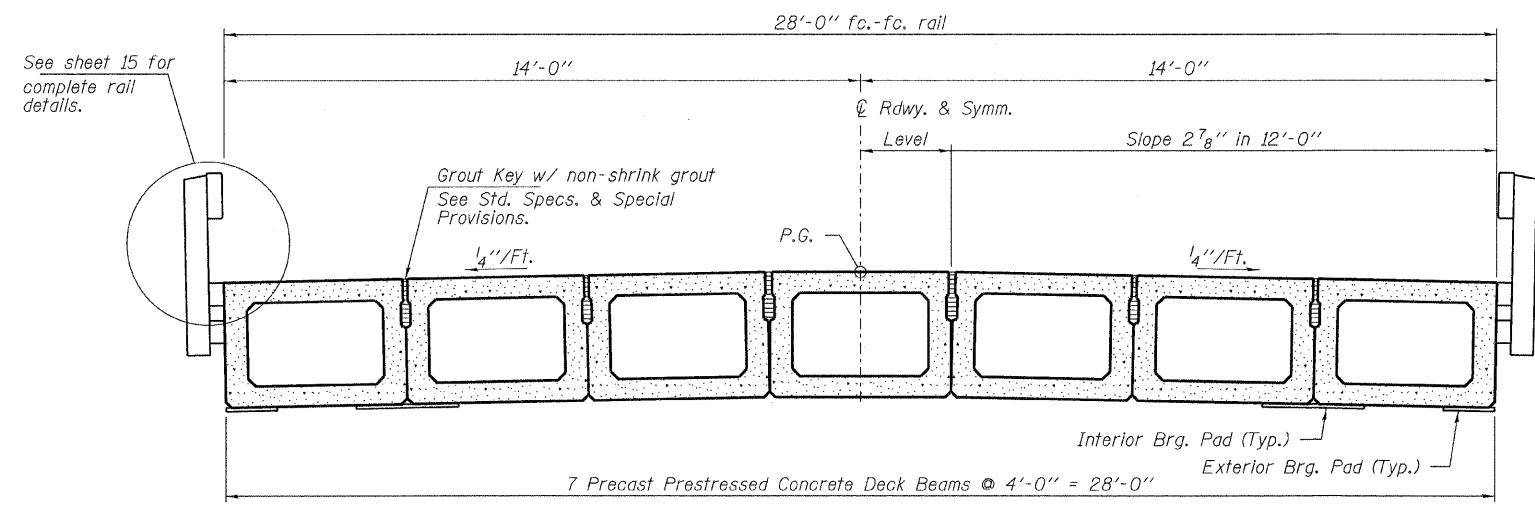
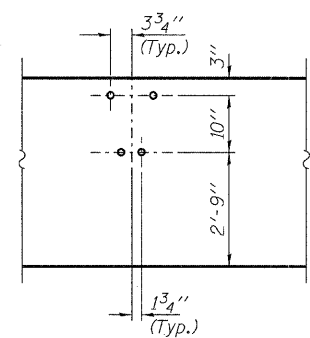


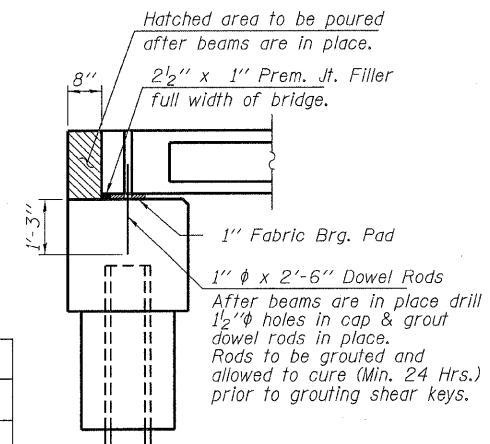
ELEVATION
Showing Rail Post Spaces
See sheet 15 for Railing Details.



CROSS SECTION
See sheets 12 & 13 for Superstructure.



DETAIL A



SECTION AT ABUTMENTS
© Rt. L's

DESIGNED -	M.G.B.
CHECKED -	S.W.M.
DRAWN -	D.A.B.
CHECKED -	S.W.M.

SUPERSTRUCTURE DETAILS
STRUCTURE NO. 053-4199

HAMPTON, LENZINI AND RENWICK, INC.
CIVIL ENGINEERS • STRUCTURAL ENGINEERS • LAND SURVEYORS
3085 STEVENSON DRIVE, SUITE 201
SPRINGFIELD, ILLINOIS 62703
217.546.3400 www.hlrengineering.com
154.00959
ILLINOIS PROFESSIONAL DESIGN FIRM LS / PE / SE CORPORATION
PROJECT NUMBER: 09.0126.130 DATE: 03/25/10

T.R.	SECTION	COUNTY	TOTAL SHEETS	SHEET NO.
119	09-24104-01-BR	LIVINGSTON	20	15
ROOKS CREEK ROAD DISTRICT		CONTRACT NO. 87453		
FED. ROAD DIST. NO.		ILLINOIS FED. AID PROJECT BROS-0105(049)		