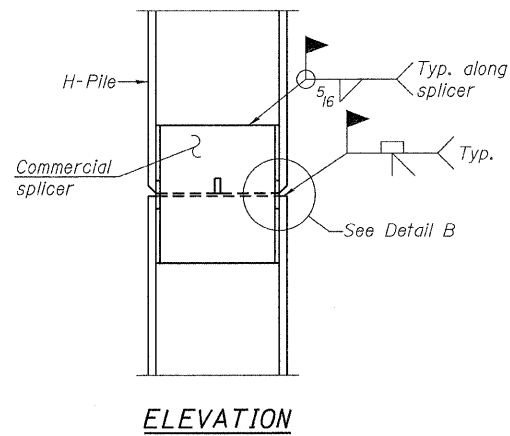
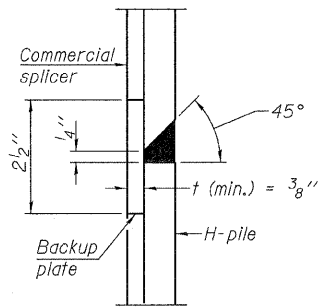


STEEL PILE TABLE

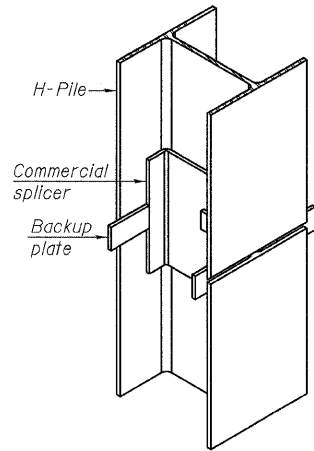
Designation	Depth <i>d</i>	Flange width <i>b_f</i>	Web and Flange thickness <i>t</i>	Encasement diameter <i>A</i>
HP 14x117	14 ¹ / ₄ "	14 ⁷ / ₈ "	1 ³ / ₁₆ "	30"
x102	14"	14 ³ / ₄ "	1 ¹ / ₁₆ "	30"
x89	13 ⁷ / ₈ "	14 ³ / ₄ "	5 ⁵ / ₈ "	30"
x73	13 ⁵ / ₈ "	14 ⁵ / ₈ "	1 ¹ / ₂ "	30"
HP 12x84	12 ¹ / ₄ "	12 ¹ / ₄ "	1 ¹ / ₁₆ "	24"
x74	12 ¹ / ₈ "	12 ¹ / ₄ "	5 ⁵ / ₈ "	24"
x63	12"	12 ¹ / ₈ "	1 ¹ / ₂ "	24"
x53	11 ³ / ₄ "	12"	7 ¹ / ₁₆ "	24"
HP 10x57	10"	10 ¹ / ₄ "	9 ¹ / ₁₆ "	24"
x42	9 ³ / ₄ "	10 ¹ / ₈ "	7 ¹ / ₁₆ "	24"
HP 8x36	8"	8 ¹ / ₈ "	7 ¹ / ₁₆ "	18"



ELEVATION

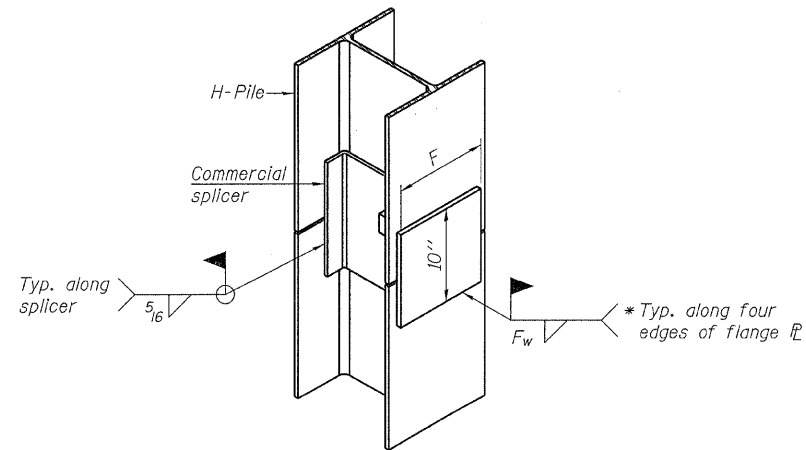


DETAIL "B"



ISOMETRIC VIEW

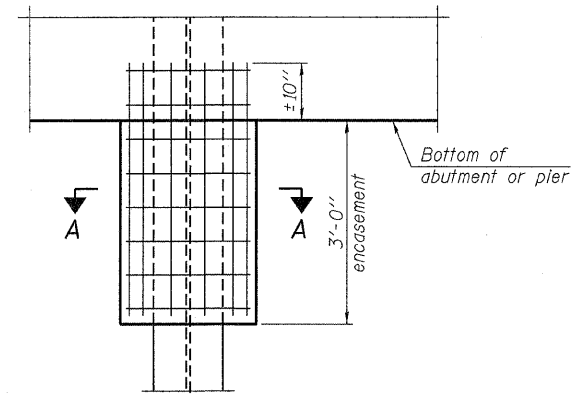
WELDED COMMERCIAL SPLICE



ISOMETRIC VIEW

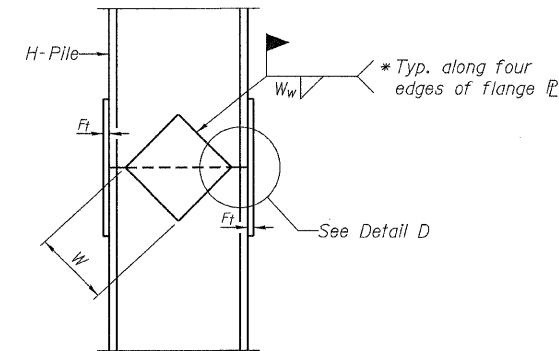
WELDED COMMERCIAL SPLICE ALTERNATE

- * Interrupt welds 1/4" from end of web and/or each flange.
- ** Remove portions of backup plates that extend outside the flanges.
- *** Weld size per pile shoe manufacturer (5/16" min.).

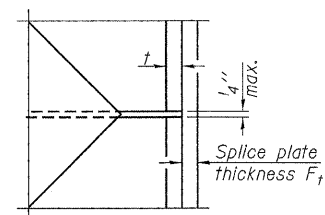


ELEVATION

PILE ENCASEMENT

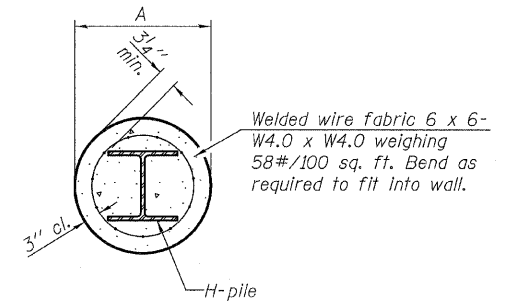


ELEVATION



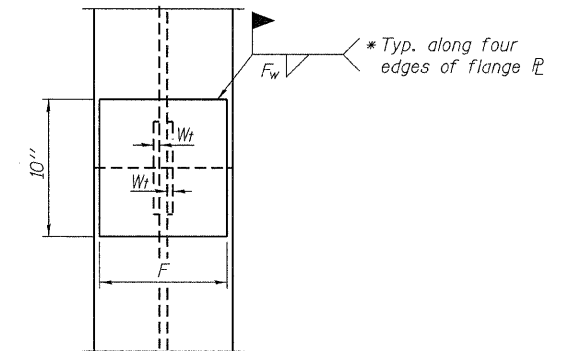
DETAIL D

WELDED PLATE FIELD SPLICE



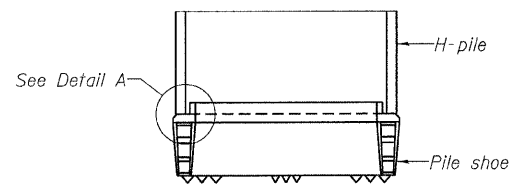
SECTION A-A

Note:
Forms for encasement may be omitted when soil conditions permit.



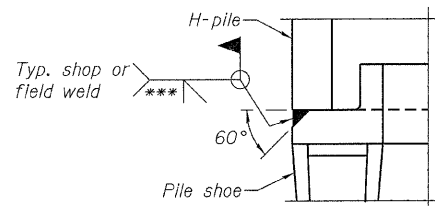
END VIEW

Designation	F	F _t	F _w	W	W _t	W _w
HP 14x117	12 ¹ / ₂ "	1"	7 ⁸ / ₈ "	7 ³ / ₄ "	5 ⁵ / ₈ "	1 ¹ / ₂ "
x102	12 ¹ / ₂ "	7 ⁸ / ₈ "	3 ⁴ / ₄ "	7 ³ / ₄ "	5 ⁵ / ₈ "	1 ¹ / ₂ "
x89	12 ¹ / ₂ "	3 ⁴ / ₄ "	1 ¹ / ₁₆ "	7 ³ / ₄ "	5 ⁵ / ₈ "	1 ¹ / ₂ "
x73	12 ¹ / ₂ "	5 ⁵ / ₈ "	9 ¹ / ₁₆ "	7 ³ / ₄ "	5 ⁵ / ₈ "	1 ¹ / ₂ "
HP 12x84	10"	7 ⁸ / ₈ "	1 ¹ / ₁₆ "	6 ¹ / ₂ "	5 ⁵ / ₈ "	1 ¹ / ₂ "
x74	10"	7 ⁸ / ₈ "	1 ¹ / ₁₆ "	6 ¹ / ₂ "	5 ⁵ / ₈ "	1 ¹ / ₂ "
x63	10"	5 ⁵ / ₈ "	1 ¹ / ₂ "	6 ¹ / ₂ "	1 ¹ / ₂ "	3 ⁸ / ₈ "
x53	10"	5 ⁵ / ₈ "	1 ¹ / ₂ "	6 ¹ / ₂ "	1 ¹ / ₂ "	3 ⁸ / ₈ "
HP 10x57	8"	3 ⁴ / ₄ "	9 ¹ / ₁₆ "	5 ¹ / ₄ "	1 ¹ / ₂ "	3 ⁸ / ₈ "
x42	8"	5 ⁵ / ₈ "	9 ¹ / ₁₆ "	5 ¹ / ₄ "	1 ¹ / ₂ "	3 ⁸ / ₈ "
HP 8x36	7"	5 ⁵ / ₈ "	7 ¹ / ₁₆ "	4 ¹ / ₄ "	1 ¹ / ₂ "	3 ⁸ / ₈ "



ELEVATION

H-PILE SHOE ATTACHMENT



DETAIL A

DESIGNED - M.G.B.
CHECKED - S.W.M.
DRAWN - D.A.B.
CHECKED - S.W.M.

F-HP 11-1-09

Note:
The steel H-piles shall be according to AASHTO M270 Grade 50.

**HP PILE DETAILS
STRUCTURE NO. 053-4199**

HAMPTON, LENZINI AND RENWICK, INC. CIVIL ENGINEERS - STRUCTURAL ENGINEERS - LAND SURVEYORS 3085 STEVENSON DRIVE, SUITE 201 SPRINGFIELD, ILLINOIS 62703 217.546.3400 www.hlrengineering.com 184.00959 ILLINOIS PROFESSIONAL DESIGN FIRM LS / PE / SE CORPORATION PROJECT NUMBER: 09.0126.130 DATE: 03/25/10	T.R.	SECTION	COUNTY	TOTAL SHEETS	SHEET NO.
	119	09-24104-01-BR	LIVINGSTON	20	18
	ROOKS CREEK ROAD DISTRICT		CONTRACT NO. 87453		
FED. ROAD DIST. NO.		ILLINOIS FED. AID PROJECT BROS-0105(049)			