

RTE.	SECTION	COUNTY	TOTAL SHEETS	SHEET NO.
TR 14A	02-01122-00-BR	IROQUOIS	22	1
FED. ROAD DIST. NO. 7	ILLINOIS	CONTRACT NO. 87460		

**STATE OF ILLINOIS  
DEPARTMENT OF TRANSPORTATION  
PLANS FOR PROPOSED  
HIGHWAY BRIDGE PROGRAM  
IROQUOIS COUNTY**

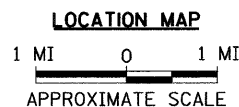
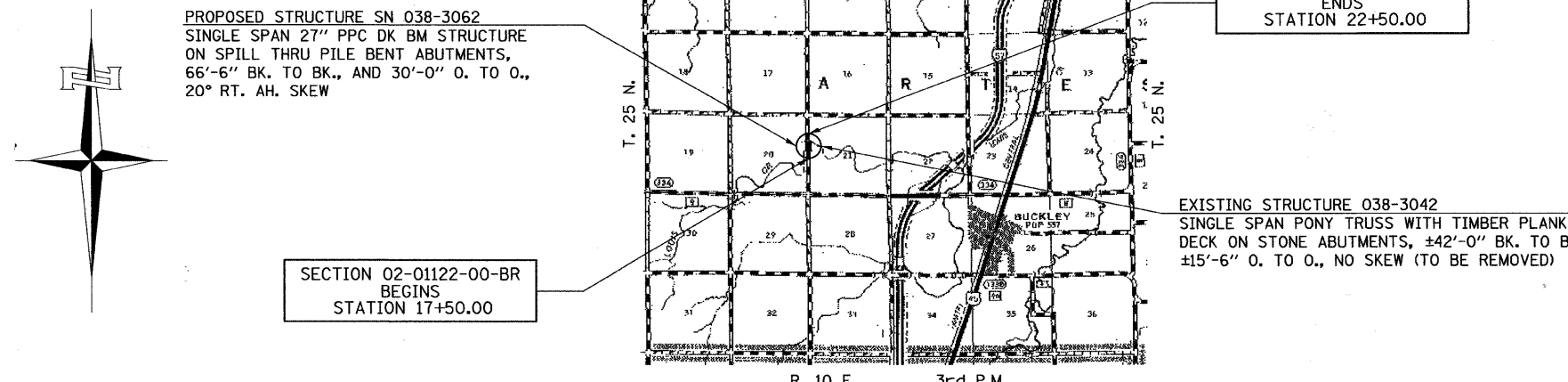
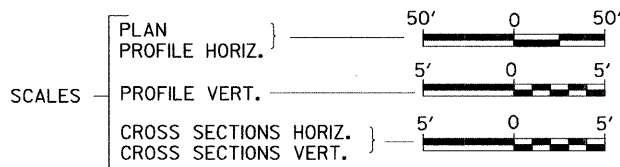
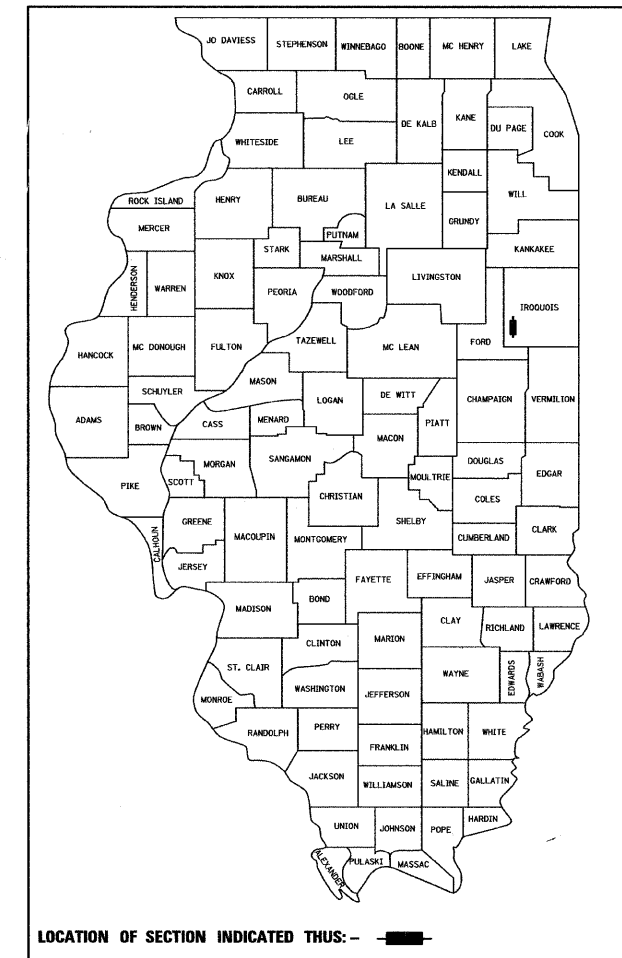
**ARTESIA ROAD DISTRICT SECTION 02-01122-00-BR  
TOWNSHIP ROAD 14A OVER LOUIS CREEK  
PROJECT NO. BROS-0075(138)  
JOB NUMBER C-93-092-10**

**INDEX OF SHEETS**

SHEET NO.	DESCRIPTION
1.	COVER SHEET
2.	GENERAL NOTES, DETAILS, TYPICAL SECTIONS
3.	SUMMARY OF QUANTITIES, SCHEDULES OF QUANTITIES
4.	TRAFFIC CONTROL PLAN
5.	EROSION CONTROL PLAN
6.	PLAN AND PROFILE
7.-15.	STRUCTURE PLANS
16.-22.	CROSS SECTIONS

**REQUIRED HIGHWAY STANDARDS**

- 000001-05
- 280001-05
- 515001-03
- 635006-03
- 701901-01
- BLR 21-8



NET LENGTH OF PROJECT = 500.00 FEET = 0.095 MILES  
DESIGN CLASSIFICATION: LOCAL ROAD (NON-URBAN)  
DESIGN ADT = 30 (2010)  
DESIGN SPEED = 30 MPH

**Hutchison Engineering, Inc.**  
JACKSONVILLE ILLINOIS  
SHOREWOOD ILLINOIS

2010 JOB#2782

PLANS DESIGNED IN ACCORDANCE WITH BUREAU OF LOCAL ROADS AND STREETS MANUAL GUIDELINES FOR TWO LANE RURAL LOCAL ROADS - RECONSTRUCTION

APPROVED	<u>3-16</u>	2010
	<i>Stephano D. Margu</i>	
	ARTESIA ROAD DISTRICT HIGHWAY COMMISSIONER	
APPROVED	<u>March 16,</u>	2010
	<i>[Signature]</i>	
	IROQUOIS COUNTY ENGINEER	
PASSED	<u>MARCH 29</u>	2010
	<i>[Signature]</i>	
	DISTRICT THREE ENGINEER OF LOCAL ROADS & STREETS	
Released For		
Bid Based on		
Limited Review	<u>MARCH 29</u>	2010
	<i>[Signature]</i>	
	DEPUTY DIRECTOR OF HIGHWAYS, REGION TWO ENGINEER	
	STATE OF ILLINOIS DEPARTMENT OF TRANSPORTATION	

ENGINEER'S SEAL

**UTILITY COMPANIES**  
VERIZON  
BLOOMINGTON, ILLINOIS

EASTERN ILLINI ELECTRIC COOPERATIVE  
PAXTON, ILLINOIS

**J.U.L.I.E.**  
JOINT UTILITY LOCATION INFORMATION FOR EXCAVATION  
1-800-892-0123  
OR 811

**ARTESIA ROAD DISTRICT**

**CONTRACT NO. 87460**

2782E001

**GENERAL NOTES**

PLAN QUANTITIES FOR TREE REMOVAL HAVE BEEN BASED ON ALL TREES WITHIN THE LIMITS OF CONSTRUCTION. THIS QUANTITY MAY BE REVISED DURING CONSTRUCTION, AT THE DIRECTION OF THE ENGINEER, BY DELETING FROM THE TREE REMOVAL QUANTITIES, SUCH TREES THAT DO NOT INTERFERE WITH THE PROPOSED CONSTRUCTION.

THE REMOVAL OF EXISTING OIL & CHIP SURFACE AND GRAVEL OR CRUSHED STONE BASE COURSE WHICH MAY BE NECESSARY FOR THE CONSTRUCTION OF THE NEW BRIDGE SHALL BE REMOVED AS EARTH EXCAVATION AND NO COMPENSATION WILL BE ALLOWED FOR ADDITIONAL LABOR OR EQUIPMENT REQUIRED.

ALL WASTE OR UNDESIRABLE MATERIAL AS IDENTIFIED BY THE ENGINEER SHALL BE DISPOSED OF OUTSIDE THE LIMITS OF THE RIGHT OF WAY AT THE CONTRACTOR'S EXPENSE.

ALL EXISTING PRIVATELY OWNED UTILITIES REQUIRING ADJUSTMENT WILL BE MADE BY THE UTILITY COMPANY INVOLVED. WHERE NO PROVISIONS HAVE BEEN MADE FOR ADJUSTMENTS ON THE PLANS, NO ADDITIONAL COMPENSATION WILL BE ALLOWED DUE TO DELAYS OR INCONVENIENCES CAUSED BY THE SAID UTILITY ADJUSTMENTS.

THE PROFILE GRADE ELEVATIONS SHOWN ON THE PLAN AND PROFILE SHEETS AND IN THE STATION CROSS SECTIONS ARE TO THE TOP OF THE FINISHED SURFACE.

ALL EXISTING DRAINAGE STRUCTURES NOT BEING REMOVED BY THE CONTRACTOR THAT ARE DAMAGED DURING CONSTRUCTION SHALL BE REPLACED AT THE CONTRACTOR'S EXPENSE.

ANY REFERENCE TO STANDARDS THROUGHOUT THE PLANS SHALL BE INTERPRETED TO BE THE LATEST STANDARDS OF THE ILLINOIS DEPARTMENT OF TRANSPORTATION

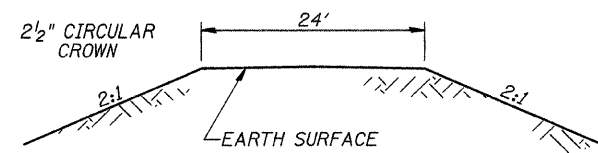
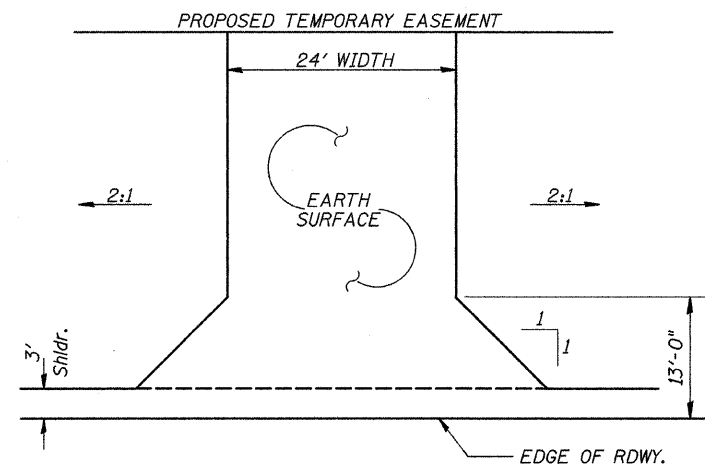
THE LOCATION OF UNDERGROUND UTILITIES SHOWN ON THE PLANS REPRESENTS THE BEST KNOWLEDGE OF THE COUNTY. IT SHALL BE THE CONTRACTOR'S RESPONSIBILITY TO VERIFY LOCATIONS OF UNDERGROUND INSTALLATIONS BEFORE STARTING CONSTRUCTION OPERATIONS. THE CONTRACTOR SHALL INDEMNIFY THE COUNTY, ITS OFFICERS AND EMPLOYEES AGAINST ALL CLAIMS DUE TO DAMAGE TO CORPORATE OR PRIVATE PROPERTY RESULTING FROM HIS CONSTRUCTION OPERATIONS AS DESCRIBED IN ARTICLES 107.20 AND 107.26 OF THE STANDARD SPECIFICATIONS.

THE CONTRACTOR MAY BE REQUIRED TO CONDUCT SOME OF HIS GRADING AND TRENCHING OPERATIONS AROUND TRANSMISSION POLES AND UNDER TRANSMISSION LINES. THE ADDED COST OF SO DOING SHALL BE INCLUDED IN THE COST OF EARTH EXCAVATION.

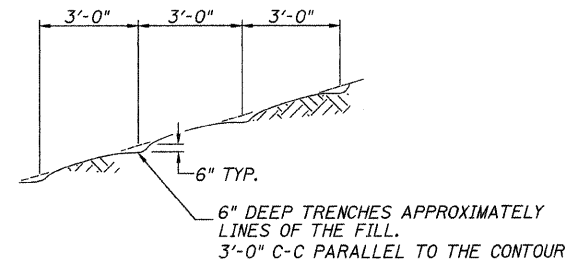
WHERE SECTION OR SUBSECTION MONUMENTS ARE ENCOUNTERED, THE ENGINEER SHALL BE NOTIFIED BEFORE SUCH MONUMENTS ARE REMOVED. THE CONTRACTOR SHALL PROTECT AND PRESERVE PROPERTY MARKERS UNTIL THE OWNER, AN AUTHORIZED SURVEYOR, OR AGENT, HAS WITNESSED OR OTHERWISE REFERENCED THEIR LOCATION.

THE FINAL SURFACE OF EMBANKMENT SHALL BE SEEDED. THE TOP 4 INCHES OF THE SEEDED AREAS SHALL BE VEGETATION SUSTAINING SOIL SUBJECT TO THE APPROVAL OF THE ENGINEER. THE COST OF SHAPING THE SLOPES AND PROVIDING VEGETATION SUSTAINING SOIL WILL NOT BE PAID FOR SEPARATELY BUT SHALL BE INCLUDED IN THE COST OF FURNISHED EXCAVATION.

ALL ELEVATIONS SHOWN REFER TO AN U.S.G.S. MEAN SEA LEVEL DATUM.

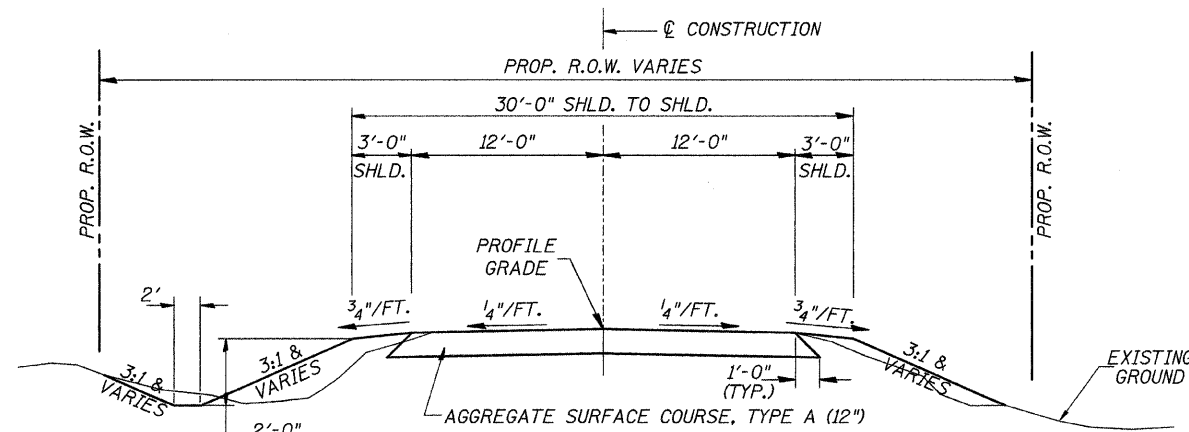


**FIELD ENTRANCE**  
STA 18+98 RT



NOTE: ALL SLOPES 3:1 OR STEEPER AND GREATER THAN 5' IN HEIGHT SHALL BE CONTOUR PLOWED AS SHOWN IN DETAIL, COST SHALL BE INCLUDED WITH SEEDING, CLASS 2 (SPECIAL).

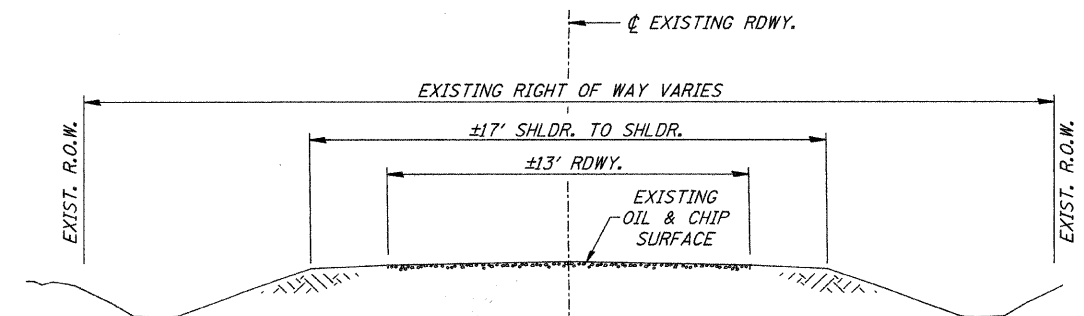
**DETAIL OF CONTOUR PLOWING**



**PROPOSED TYPICAL SECTION**

STA. 17+50.00 TO STA. 19+69.25  
STA. 20+35.75 TO STA. 22+50.00  
EXCEPT TRANSITIONS

BRIDGE OMISSION  
STA. 19+69.25 TO STA. 20+35.75



**EXISTING TYPICAL SECTION**

FILE NAME = V:\Bridge\2782-Iroquois\2782t001.dgn	USER NAME = jhutchison	DESIGNED -	REVISED -
		DRAWN -	REVISED -
	PLOT SCALE = 1.0000 ft / IN.	CHECKED -	REVISED -
	PLOT DATE = 3/11/2010	DATE -	REVISED -

**IROQUOIS COUNTY  
TOWNSHIP ROAD 14A  
OVER LOUIS CREEK**

**GENERAL NOTES, TYPICAL SECTIONS, DETAILS**

SCALE: NONE SHEET NO. 1 OF 1 SHEETS STA. 17+50.00 TO STA. 22+50.00

RTE.	SECTION	COUNTY	TOTAL SHEETS	SHEET NO.
TR 14A	02-01122-00-BR	IROQUOIS	22	2
CONTRACT NO. 87460				
FED. ROAD DIST. NO. 7 ILLINOIS FED. AID PROJECT NO. BR05-0075(138)				

**SUMMARY OF QUANTITIES**

CODE NO.	ITEM	UNIT	QUANTITY
20100210	TREE REMOVAL (OVER 15 UNITS DIAMETER)	UNIT	24
20200100	EARTH EXCAVATION	CU YD	195
20300100	CHANNEL EXCAVATION	CU YD	220
① 20400800	FURNISHED EXCAVATION	CU YD	1,000
① 25001000	SEEDING, CLASS 2 (SPECIAL)	ACRE	0.6
① 28000305	TEMPORARY DITCH CHECKS	FOOT	60
28000400	PERIMETER EROSION BARRIER	FOOT	295
28000500	INLET AND PIPE PROTECTION	EACH	1
28100209	STONE RIPRAP, CLASS A5	TON	410
① 28200200	FILTER FABRIC	SQ YD	350
① 40200100	AGGREGATE SURFACE COURSE, TYPE A	TON	758
① 50100100	REMOVAL OF EXISTING STRUCTURES	EACH	1
① 50105220	PIPE CULVERT REMOVAL	FOOT	29
50200100	STRUCTURE EXCAVATION	CU YD	70
50300225	CONCRETE STRUCTURES	CU YD	27.2
50300280	CONCRETE ENCASEMENT	CU YD	3.5
① 50400505	PRECAST PRESTRESSED CONCRETE DECK BEAMS (27" DEPTH)	SQ FT	1,938
① 50800105	REINFORCEMENT BARS	POUND	2,950
* 50900205	STEEL RAILING, TYPE S1	FOOT	133
51201400	FURNISHING STEEL PILES HP10x42	FOOT	507
① 51202305	DRIVING PILES	FOOT	507
① 51203400	TEST PILE STEEL HP10x42	EACH	1
51500100	NAME PLATES	EACH	1
① 542D0220	PIPE CULVERTS, CLASS D, TYPE 1 15"	FOOT	36
67100100	MOBILIZATION	L SUM	1
* ① 78201000	TERMINAL MARKER - DIRECT APPLIED	EACH	4

① SEE SPECIAL PROVISIONS

CONSTRUCTION TYPE CODE: X080-24

\* SPECIALTY ITEMS

**EARTHWORK SUMMARY**

STATION TO STATION	EARTH EXCAVATION	CHANNEL EXCAVATION	STRUCTURE EXCAVATION	FILL	WASTE (SHORTAGE)
	CU YD	CU YD	CU YD	CU YD	CU YD
RDWY 17+50.00 - 19+69.25	75			590	(534)
RDWY 20+35.75 - 22+50.00	122			558	(467)
CHANNEL		220			
STRUCTURE			70		
TOTAL	197	220	70	1,148	(1,001)
USE	195	220	70	-	(1,000)

(\* 25% SHRINKAGE)

**TEMPORARY DITCH CHECKS**

STATION	SIDE	FOOT
19+92	RIGHT	12
20+15	LEFT	12
20+50	RIGHT	12
21+20	LEFT	12
21+50	RIGHT	12
TOTAL		60

**TREE REMOVAL**

STATION	OFFSET	SIDE	OVER 15 UNITS
19+82	32'	LEFT	24
TOTAL			24

**INLET & PIPE PROTECTION**

STATION	SIDE	EACH
18+80	RIGHT	1
TOTAL		1

**PERIMETER EROSION BARRIER**

STATION TO STATION	SIDE	FOOT
17+50 - 19+62	LEFT	230
18+80 - 19+15	RIGHT	40
22+25 - 22+50	LEFT	25
TOTAL		295

**PIPE CULVERT REMOVAL**

STATION	SIZE	SIDE	FOOT
18+98	12"	RIGHT	29
TOTAL			29

**PIPE CULVERTS,  
CLASS D, TYPE 1 15"**

STATION	SIDE	FOOT
18+98	RIGHT	36
TOTAL		36

**AGGREGATE SURFACE COURSE, TYPE A**

STATION TO STATION	THICKNESS	WIDTH	LENGTH	TON
17+50.00 - 18+00.00	1.00'	20.06' AVG.	50.00'	70
18+00.00 - 19+69.25	1.00'	25.00'	169.25'	296
ABUTMENT BACKFILL - SEE SPECIAL PROVISIONS				37
20+35.75 - 22+00.00	1.00'	25.00'	164.25'	287
22+00.00 - 22+50.00	1.00'	19.44' AVG.	50.00'	68
TOTAL				758

R. 10 E., 3rd P.M.

T. 25 N.

T. 25 N.

SECTION 17

SECTION 16

TOWNSHIP ROAD 14A

SECTION 20

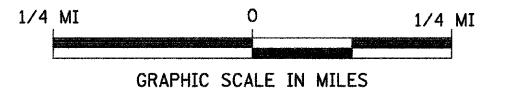
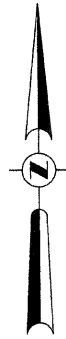
SECTION 21

- 2
- 3
- 4
- 5

- 5
- 4
- 3
- 1

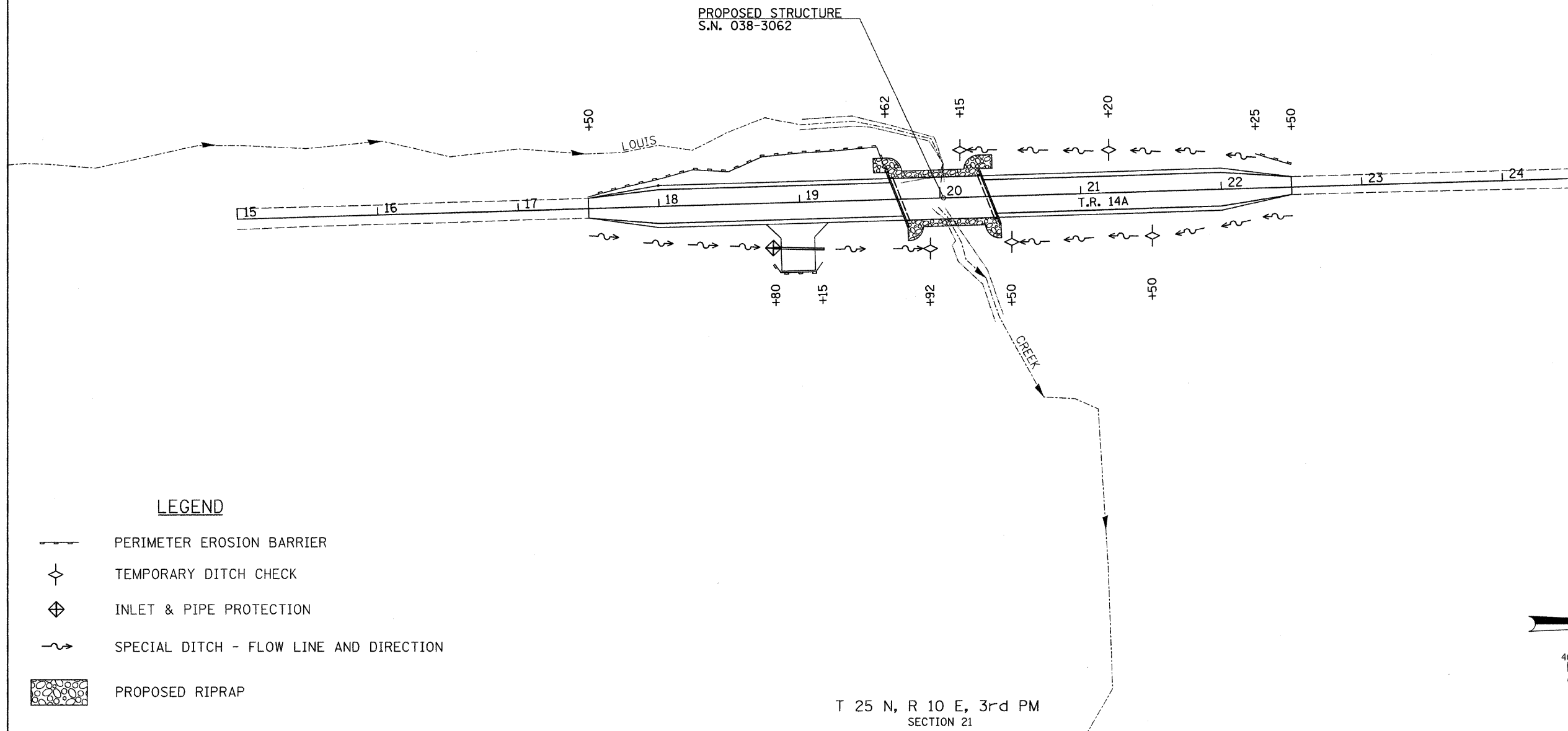
- 1 ROAD CLOSED  
2/3 MILES AHEAD  
LOCAL TRAFFIC ONLY  
R11-3
- 2 ROAD CLOSED  
1/3 MILES AHEAD  
LOCAL TRAFFIC ONLY  
R11-3
- 3 ROAD CLOSED  
AHEAD  
ROAD CLOSED  
AHEAD  
W20-3
- 4 ROAD CLOSED  
500 FT  
ROAD CLOSED  
500 FT  
W20-3
- 5 TYPE III BARRICADES

SEE STANDARD BLR 21 AND SPECIAL PROVISIONS

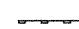


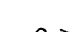



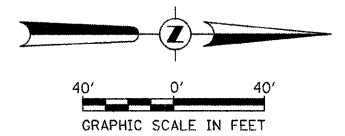
R. 10 E., 3rd P.M.

FILE NAME = V:\Bridge\2782-Iroquois\2782h001.dgn	USER NAME = jhutchison	DESIGNED -	REVISED -	<b>IROQUOIS COUNTY TOWNSHIP ROAD 14A OVER LOUIS CREEK</b>	<b>TRAFFIC CONTROL PLAN</b>			RTE.	SECTION	COUNTY	TOTAL SHEETS	SHEET NO.
		DRAWN -	REVISED -		TR 14A	02-01122-00-BR	IROQUOIS	22	4			
		CHECKED -	REVISED -		SCALE: NONE SHEET NO. 1 OF 1 SHEETS STA. 17+50.00 TO STA. 22+50.00			CONTRACT NO. 87460				
		DATE -	REVISED -		FED. ROAD DIST. NO. 7 [ILLINOIS] FED. AID PROJECT NO. BR05-0075038							



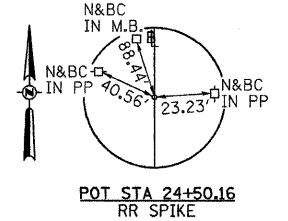
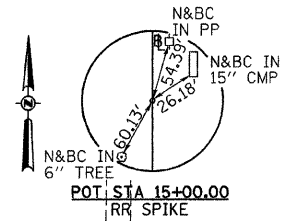
**LEGEND**

-  PERIMETER EROSION BARRIER
-  TEMPORARY DITCH CHECK
-  INLET & PIPE PROTECTION
-  SPECIAL DITCH - FLOW LINE AND DIRECTION
-  PROPOSED RIPRAP



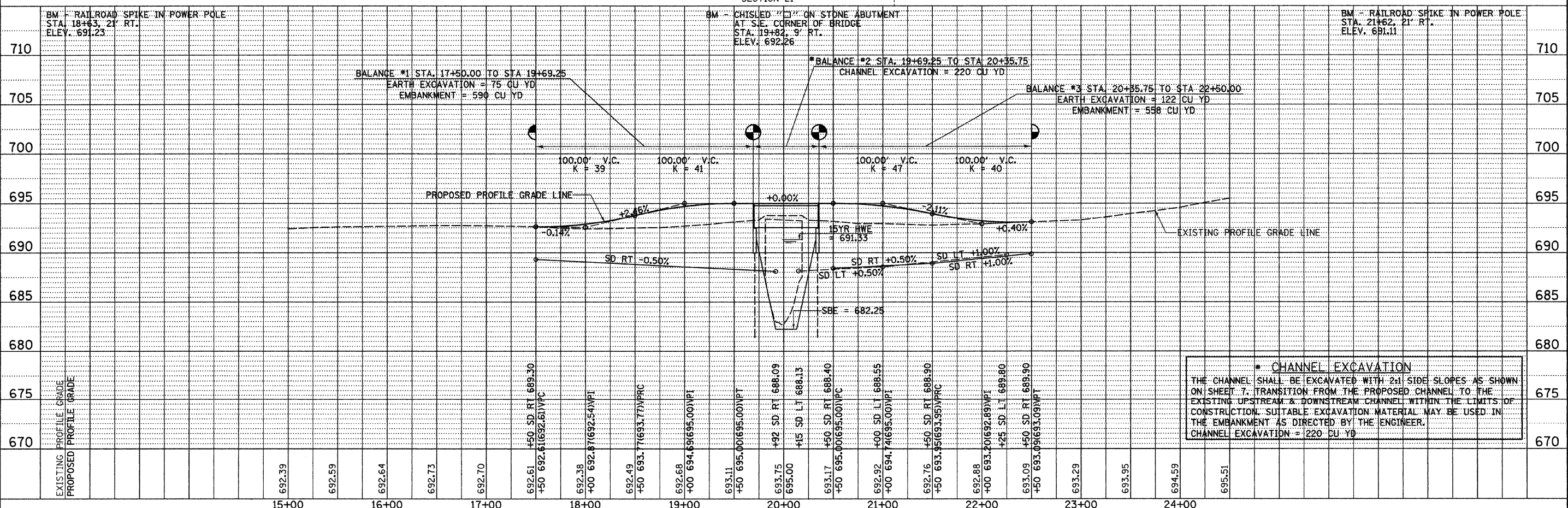
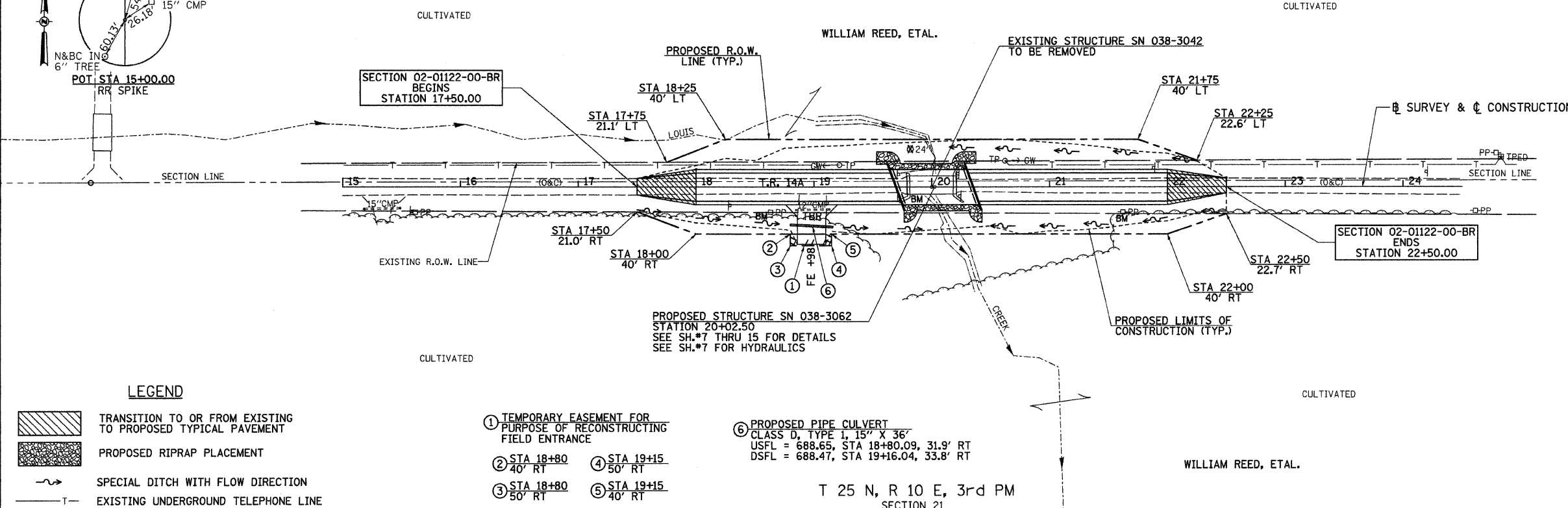
FILE NAME = V:\Bridge\2782-Iroquois\2782S001.dgn	USER NAME = jhutchison	DESIGNED -	REVISED -	<b>IROQUOIS COUNTY TOWNSHIP ROAD 14A OVER LOUIS CREEK</b>	<b>EROSION CONTROL PLAN</b>			RTE.	SECTION	COUNTY	TOTAL SHEETS	SHEET NO.	
	PLOT SCALE = 40.0000' / IN.	DRAWN -	REVISED -					TR 14A	02-01122-00-BR	IROQUOIS	22	5	
	PLOT DATE = 3/11/2010	CHECKED -	REVISED -					SCALE: 1" = 40'-0" SHEET NO. 1 OF 1 SHEETS STA. 17+50.00 TO STA. 22+50.00			CONTRACT NO. 87460		
	DATE -	REVISED -	FED. ROAD DIST. NO. 7 ILLINOIS FED. AID PROJECT NO. BR05-0075(138)										

T 25 N, R 10 E, 3rd PM  
SECTION 20



PLAN	DATE
SURVEYED	
PLOTTED	
CHECKED	
BY	
NO.	
NOTE BOOK	
NO.	
FILE NAME	

PROFILE	DATE
SURVEYED	
PLOTTED	
CHECKED	
BY	
NO.	
NOTE BOOK	
NO.	
FILE NAME	



**\* CHANNEL EXCAVATION**  
THE CHANNEL SHALL BE EXCAVATED WITH 2:1 SIDE SLOPES AS SHOWN ON SHEET 7. TRANSITION FROM THE PROPOSED CHANNEL TO THE EXISTING UPSTREAM & DOWNSTREAM CHANNEL WITHIN THE LIMITS OF CONSTRUCTION. SUITABLE EXCAVATION MATERIAL MAY BE USED IN THE EMBANKMENT AS DIRECTED BY THE ENGINEER.  
CHANNEL EXCAVATION = 220 CU YD

FILE NAME = V:\Bridges\2782-Iroquois\2782p001.dgn	USER NAME = jhutchison	DESIGNED -	REVISED -	<b>IROQUOIS COUNTY TOWNSHIP ROAD 14A OVER LOUIS CREEK</b>		<b>PLAN AND PROFILE</b>		RTE.	SECTION	COUNTY	TOTAL SHEETS	SHEET NO.
		DRAWN -	REVISED -					TR 14A	02-01122-00-BR	IROQUOIS	22	6
		CHECKED -	REVISED -					CONTRACT NO. 87460				
		DATE -	REVISED -					FED. ROAD DIST. NO. 7 [ILLINOIS] FED. AID PROJECT NO. BROS-00751391				
						SCALE: 1"=50'	SHEET NO. 1 OF 1 SHEETS	STA. 17+50.00 TO STA. 22+50.00				

B.M.: RR Spike in Power Pole, Sta. 18+63, 21' Rt. Elev. 691.23  
 RR Spike in Power Pole, Sta. 21+62, 21' Rt. Elev. 691.11

Existing Structure:  
 Single span pony truss with timber plank deck on stone abutments. The structure is ±42'-0" back to back of abutments, ±15'-6" out to out of deck and is not skewed. Str. No. 038-3042

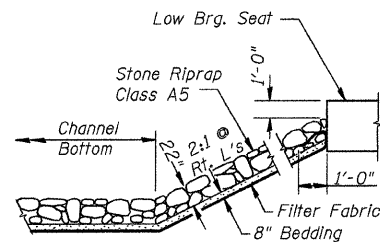
Salvage: Superstructure and Abutment Stone

Road to be closed to traffic during construction.

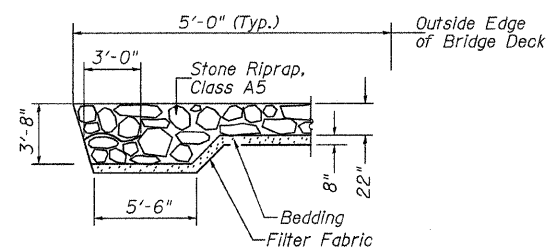
**LOUIS CREEK**  
 BUILT 2011 BY  
 ARTESIA ROAD DISTRICT  
 IROQUOIS COUNTY  
 SEC. 02-01122-00-BR  
 T.R. 14A STATION 20+02.50  
 F.A. PROJ. BROS-0075(138)  
 STR. NO. 038-3062 LOADING HL-93

**NAME PLATE**

Locate Name Plate at S.E. Wingwall  
 Corner of Bridge (See Std. 515001)



**STONE RIPRAP DETAIL**



**SECTION A-A**

**DESIGN SCOUR TABLE**

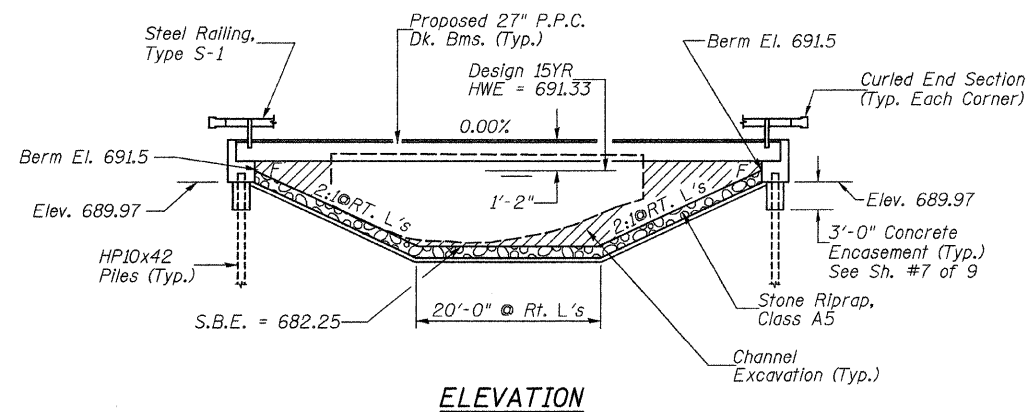
Location	S. Abut	N. Abut
Design Scour Elevation	689.97	689.97

**WATERWAY INFORMATION**

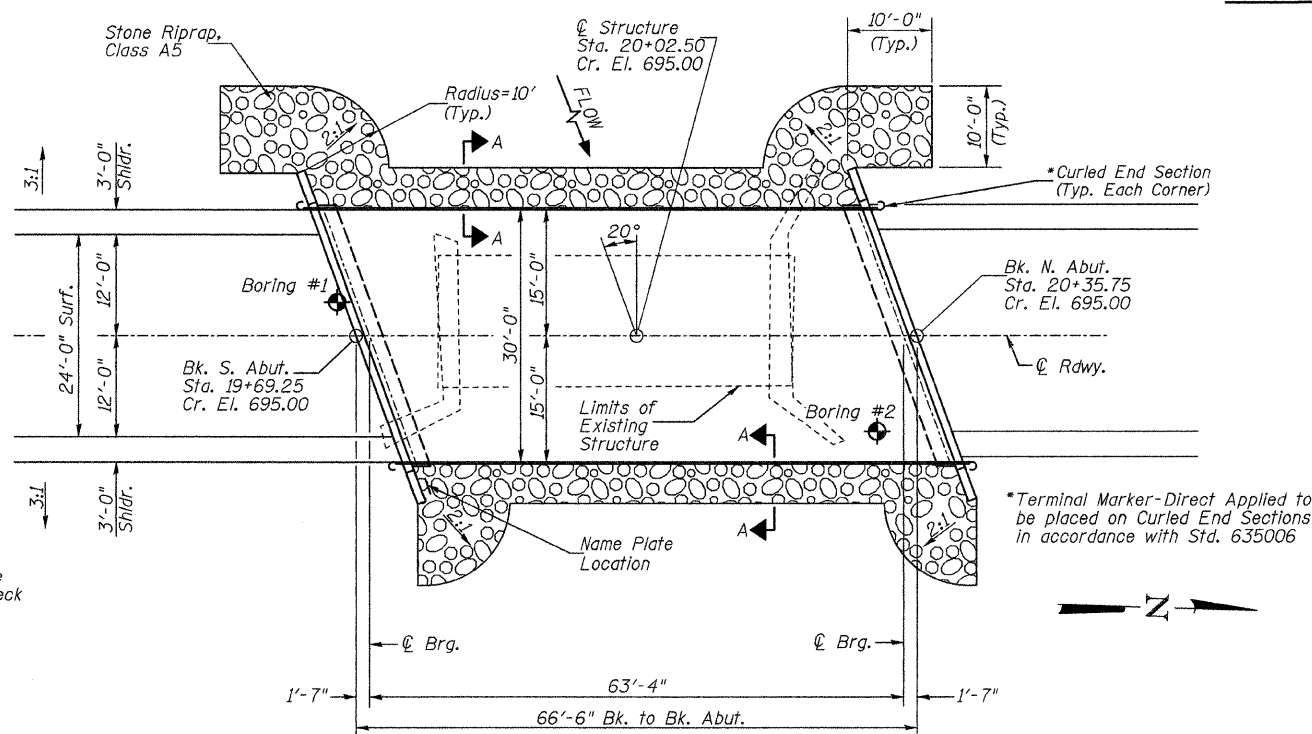
Drainage Area = 9.12 Sq. Mi.		Low Grade Elev. = 692.39 @ Sta. 15+00.00							
Flood Yr.	Q C.F.S.	Opening Sq. Ft.		Nat. H.W.E.	Head - Ft.		Headwater El.		
		Exist.	Prop.		Exist.	Prop.	Exist.	Prop.	
Design	15 1,735	257	346	691.33	0.52	0.29	691.85	691.62	
Base	100 2,810	280	382	691.96	1.59	0.65	693.55	692.61	

DESIGNED	C.T.M.
CHECKED	J.E.H.
DRAWN	C.T.M.
CHECKED	J.E.H.

2782b001



**ELEVATION**



**PLAN**

**DESIGN SPECIFICATIONS**

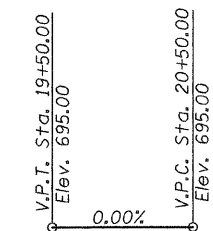
2007 AASHTO (LRFD) & Interims

**DESIGN STRESSES**

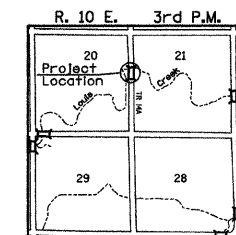
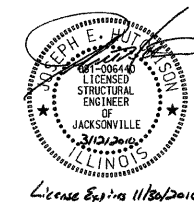
(FIELD UNITS)  $f'_c = 3,500$  p.s.i.  $f_y = 60,000$  p.s.i. (Rein.)  
 (PRECAST PRESTRESSED UNITS)  $f'_c = 6,000$  p.s.i.  $f'_{ci} = 5,000$  p.s.i.  $f'_s = 270,000$  p.s.i. ( $\frac{1}{2}$ " Strands)  $f'_{si} = 201,960$  p.s.i. ( $\frac{1}{2}$ " Strands)

**LOADING HL-93**

Allow 50#/sq. ft. for future wearing surface.



**PROFILE GRADE**



**LOCATION SKETCH**

**GENERAL NOTES**

The Contractor shall drive test piles to 110% of the nominal required bearing specified in production locations at the substructures specified or approved by the Engineer before ordering the remainder of the piles.  
 For Soil Boring Logs, See Sheets 8-9 of 9.  
 A Corrosion Inhibitor shall be used in the concrete for Precast Prestressed Concrete Deck Beams according to Article 1020.05(b)(12) of the Standard Specifications.  
 Reinforcement Bars shall conform to the requirements of ASTM A706 Grade 60. Reinforcement Bars designated (E) shall be epoxy coated.  
 Layout of the slope protection system may be varied in the field to suit ground conditions as directed by the Engineer.  
 Excavation behind existing abutment walls shall be done before removing existing Superstructure.  
 The existing structural steel coating may contain lead. The Contractor should take appropriate precautions to deal with the presence of lead on this project.

**TOTAL BILL OF MATERIAL**

ITEM	UNIT	SUPER	SUB	TOTAL
Channel Excavation	CU YD	---	220	220
Stone Riprap, Class A5	TON	---	410	410
Filter Fabric	SQ YD	---	350	350
Removal of Existing Structures	EACH	---	1	1
Structure Excavation	CU YD	---	70	70
Concrete Structures	CU YD	---	27.2	27.2
Precast Prestressed Concrete Deck Beams (27" Depth)	SQ FT	1,938	---	1,938
Reinforcement Bars	POUND	---	2,950	2,950
Steel Railing, Type S1	FOOT	133	---	133
Furnishing Steel Piles HP10x42	FOOT	---	507	507
Driving Piles	FOOT	---	507	507
Test Pile Steel HP10x42	EACH	---	1	1
Concrete Encasement	CU YD	---	3.5	3.5
Name Plates	EACH	---	1	1

① See Special Provisions

I certify that to the best of my knowledge, information and belief, this bridge design is structurally adequate for the design loading shown on the plans. The design is an economical one for the style of structure and complies with requirements of the current AASHTO Standard Specification for Highway Bridges.  
 This design complies with all requirements of the current AASHTO Guide Specifications for Seismic Design of highway bridges.

*Stephen E. Hout* 3/12/2010  
 Illinois Structural No. 6440  
 Expires 11/30/2010

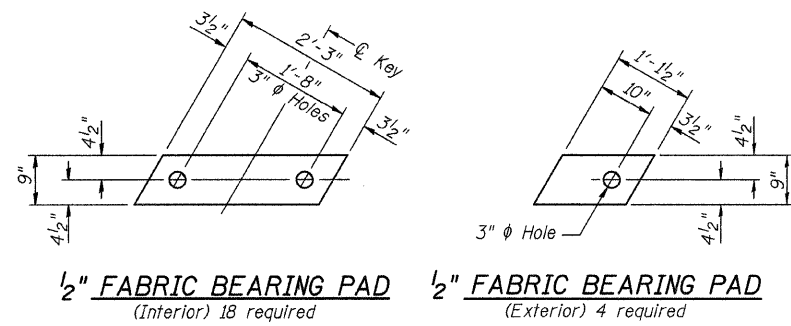
**GENERAL PLAN & ELEVATION**

**IROQUOIS COUNTY**

**SECTION 02-01122-00-BR**

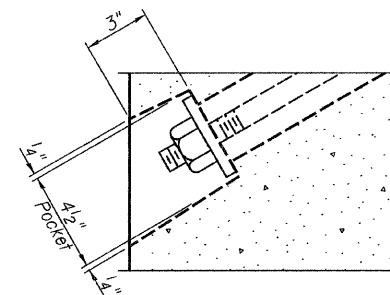
**T.R. 14A OVER LOUIS CREEK**

SHEET NO. 1	ROUTE NO.	SECTION	COUNTY	TOTAL SHEETS	SHEET NO.
	TR 14A	02-01122-00-BR	IROQUOIS	22	7
9 SHEETS	S.N. 038-3062		CONTRACT NO. 87460		
FED. ROAD DIST. NO. 7 ILLINOIS		FED. AID PROJECT BROS-0075(138)			

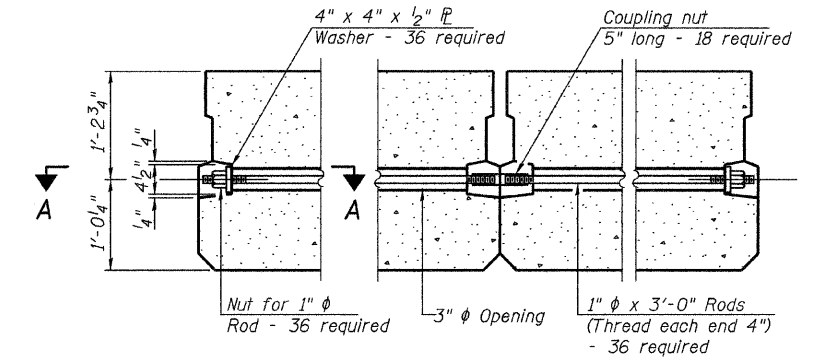


**1/2" FABRIC BEARING PAD** (Interior) 18 required  
**1/2" FABRIC BEARING PAD** (Exterior) 4 required

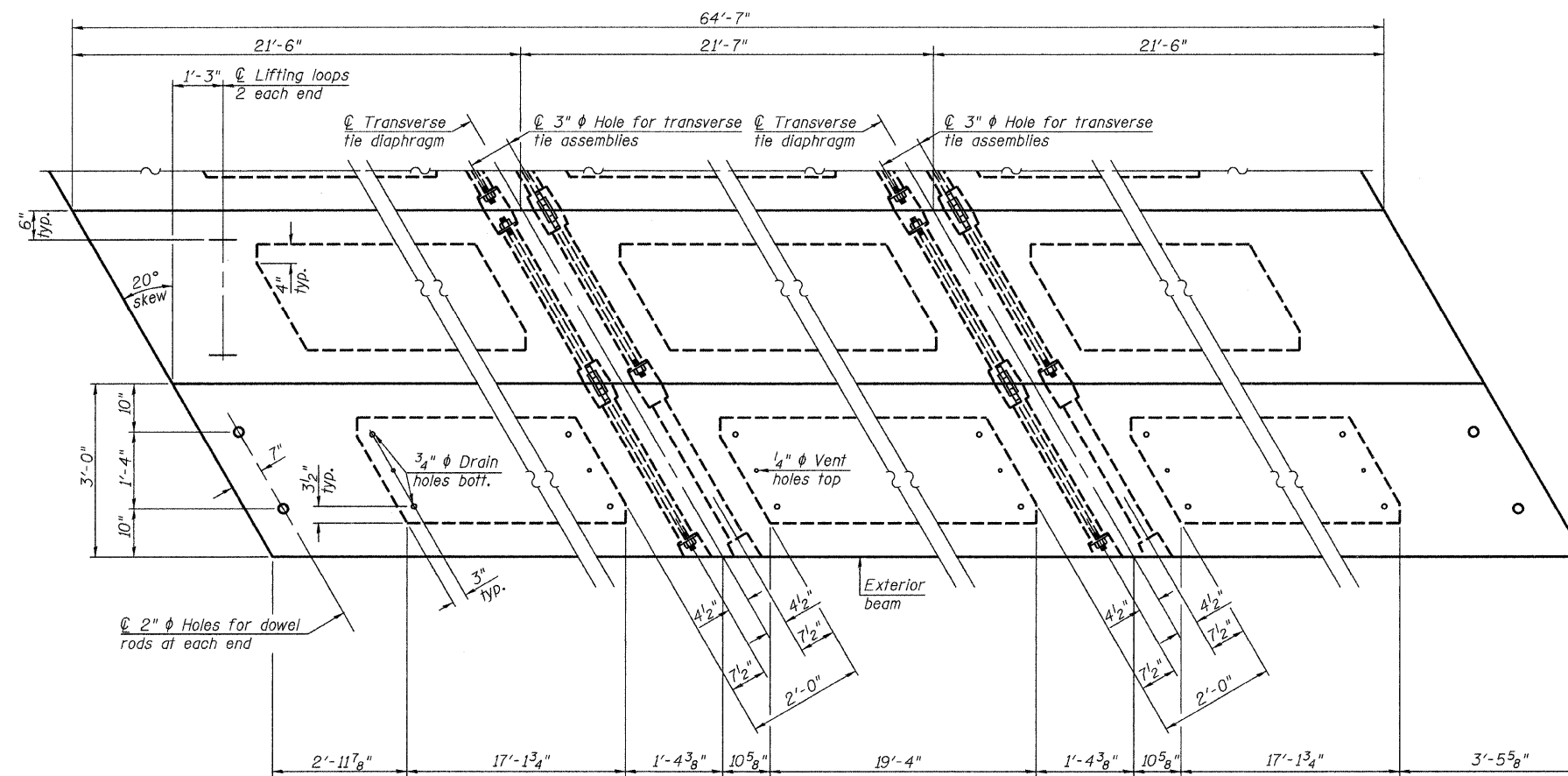
**FIXED**



**SECTION A-A**



**TYPICAL TRANSVERSE TIE ASSEMBLY**

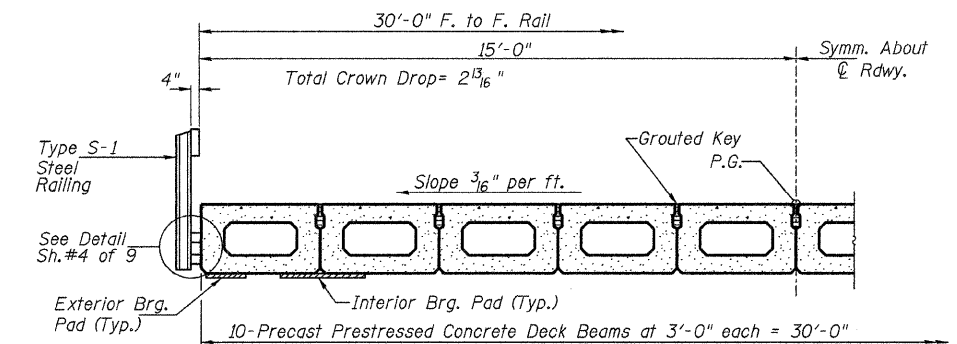


**PLAN VIEW**

Note: Connect beams in pairs with the transverse tie configuration shown.

**NOTES**

Prestressing steel shall be uncoated high strength, low relaxation 7-wire strand, Grade 270. The nominal diameter shall be 1/2" and the nominal cross-sectional area shall be 0.153 sq. in. The 1" rods in the transverse tie assembly shall be tightened to a snug fit and the threads set. Pockets on exterior faces of bridge shall be filled with grout after transverse tie assembly is in place.  
 Reinforcement bars shall conform to ASTM A 706, Grade 60.  
 Two 1/8" fabric adjusting shims of the dimensions of the exterior bearing pad shall be provided for each bearing pad location.  
 A minimum 2 1/2" diameter lifting pin shall be used to engage the lifting loops during handling.  
 Corrosion Inhibitor, per Article 1020.05(b)(12) and 1021.06 of the Standard Specifications, shall be used in the concrete for precast prestressed concrete deck beams.  
 Compressive strength of prestressed concrete, f'c, shall be 6000 psi.  
 Compressive strength of prestressed concrete at release, f'cl, shall be 5000 psi.



**HALF CROSS SECTION**

**BILL OF MATERIAL**

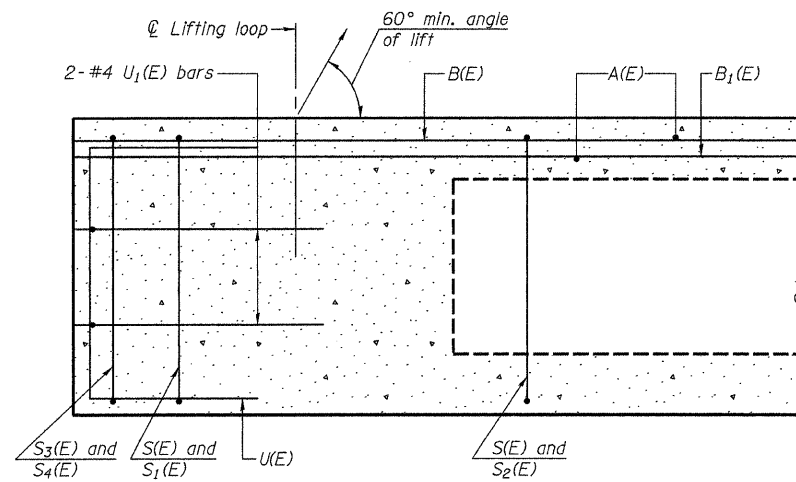
ITEM	UNIT	QUANTITY
① Precast Prestressed Concrete Deck Beams (27" Depth)	SQ FT	1,938

① See Special Provisions

**SUPERSTRUCTURE**  
**IROQUOIS COUNTY**  
**SECTION 02-01122-00-BR**  
**T.R. 14A OVER LOUIS CREEK**

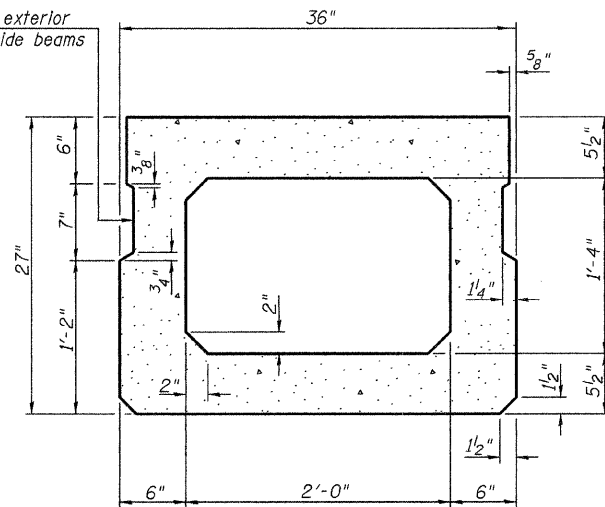
SHEET NO. 2 9 SHEETS	ROUTE NO.	SECTION	COUNTY	TOTAL SHEETS	SHEET NO.
	TR 14A	02-01122-00-BR	IROQUOIS	22	8
	S.N. 038-3062		CONTRACT NO. 87460		
FED. ROAD DIST. NO. 7 ILLINOIS		FED. AID PROJECT BR05-0075(138)			





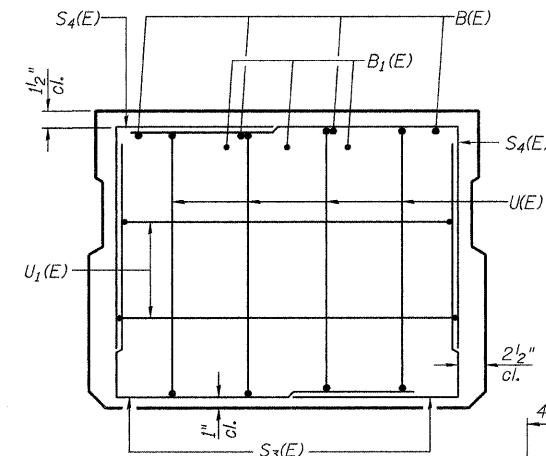
**SECTION C-C**

\*\*Omit key on exterior face of outside beams

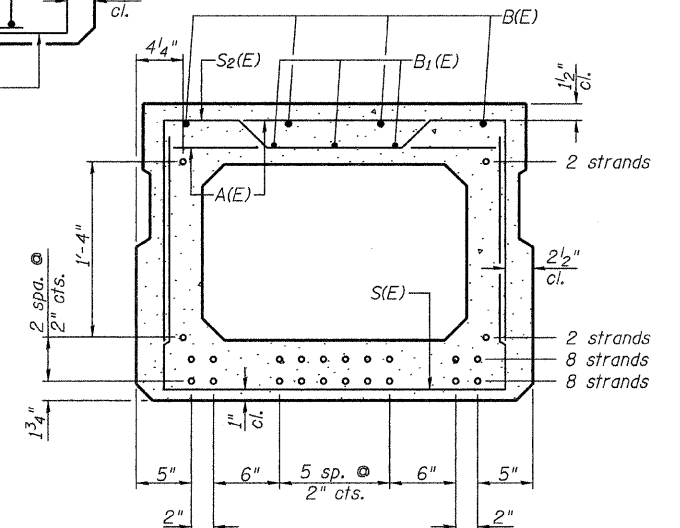


**SECTION A-A (Showing Dimensions)**

\*\*Roll post anchor devices (Sheet 4 of 9) to be cast into exterior face of outside beams.

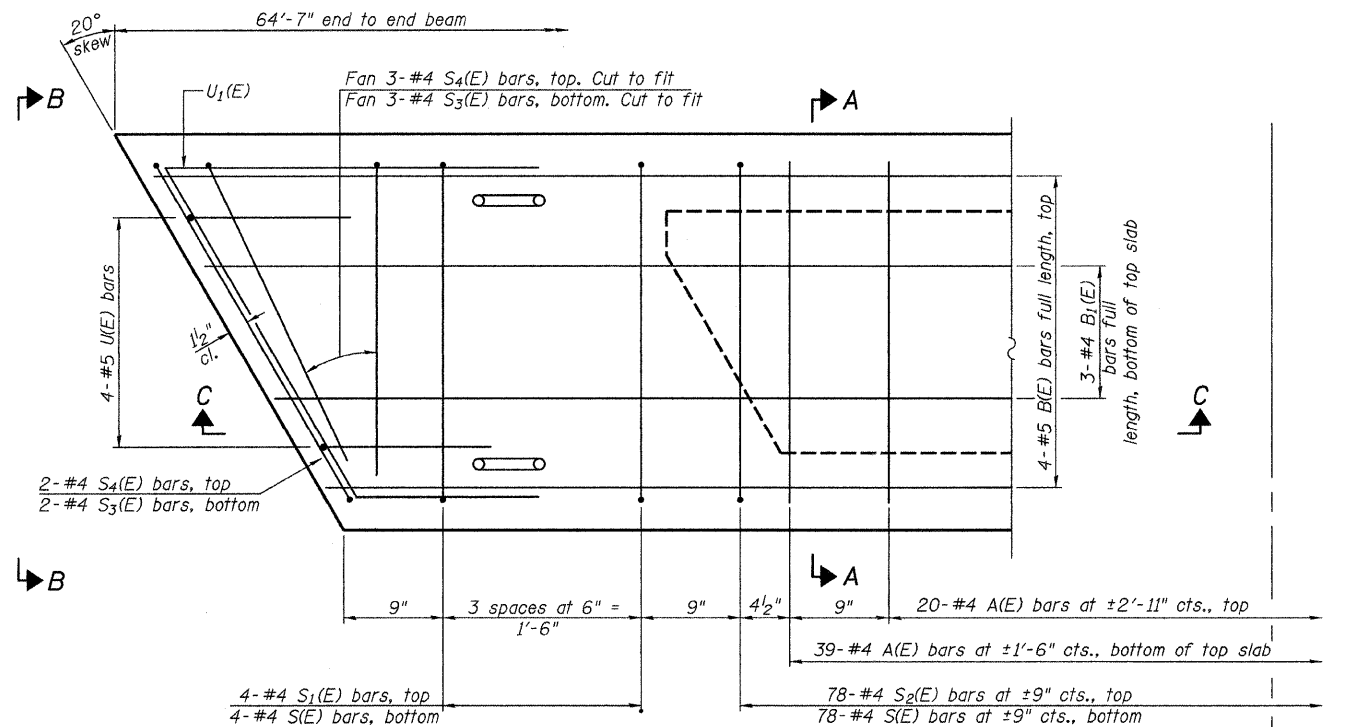


**VIEW B-B**



**SECTION A-A**

20-1/2"  $\phi$  Strands Each Strand Stressed to 30,900 Lbs.  
 8-Strands 1 3/4" up, 8-Strands 3 3/4" up, 2-Strands 5 3/4" up,  
 2-Strands 1'-9 3/4" up  
 Note: Place the number of strands specified in each row symmetrically about the centerline of beam in the permissible strand locations shown.



**PLAN VIEW**

Note: Spacing of S(E) and S2(E) bars may be adjusted up to 4" in the immediate area of the transverse tie diaphragms to miss the block outs for the transverse ties.

**BAR S(E)**

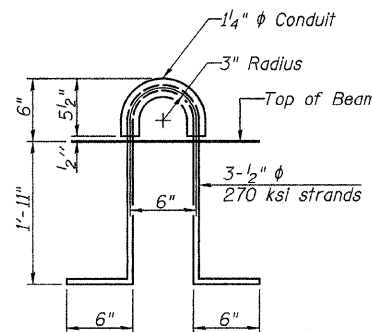
**BAR S1(E)**

**BAR S2(E)**

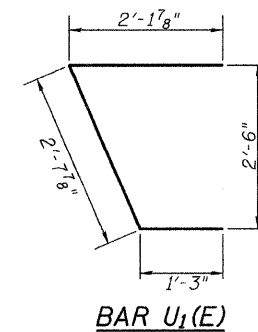
**BAR S3(E)**

**BAR S4(E)**

**BAR U(E)**



**LIFTING LOOP DETAIL**



**BAR U1(E)**

**BAR LIST-ONE BEAM ONLY**

(For information only)

Bar	No.	Size	Length	Shape
A(E)	59	#4	2'-7"	—
B(E)	4	#5	*64'-4"	—
B1(E)	3	#4	*64'-4"	—
S(E)	86	#4	6'-5"	U
S1(E)	8	#4	5'-11"	U
S2(E)	78	#4	6'-2"	U
S3(E)	10	#4	4'-8"	U
S4(E)	10	#4	4'-5"	U
U(E)	8	#5	4'-6"	U
U1(E)	4	#4	6'-1"	U

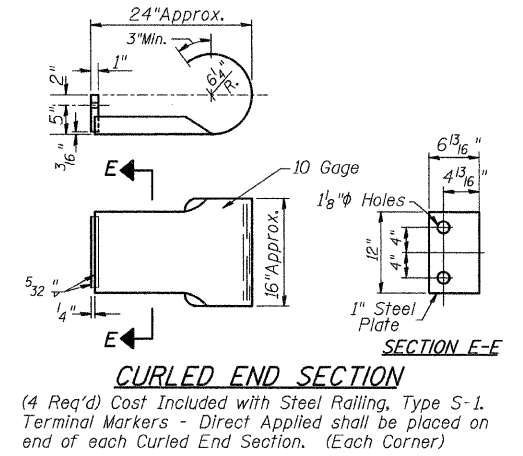
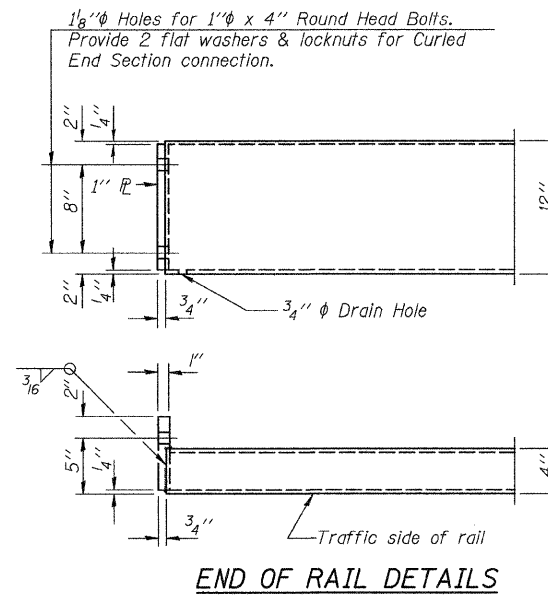
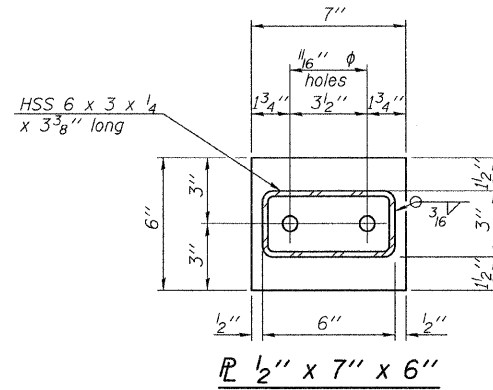
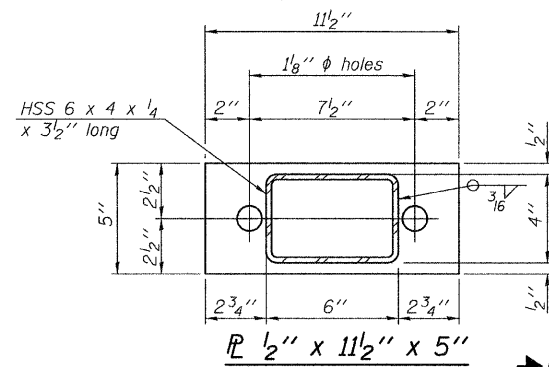
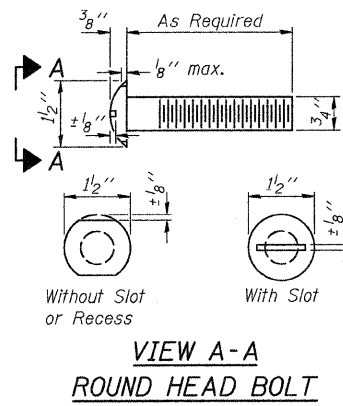
\* Total Length. Lap as necessary

Note: See sheet 2 of 9 for additional details and Bill of Material.

**SUPERSTRUCTURE DETAILS  
 IROQUOIS COUNTY  
 SECTION 02-01122-00-BR  
 T.R. 14A OVER LOUIS CREEK**

SHEET NO. 3 9 SHEETS	ROUTE NO.	SECTION	COUNTY	TOTAL SHEETS	SHEET NO.
	TR 14A	02-01122-00-BR	IROQUOIS	22	9
	S.N. 038-3062		CONTRACT NO. 87460		
FED. ROAD DIST. NO. 7 ILLINOIS		FED. AID PROJECT BROS-0075(138)			

FOR RAIL POST SPACING SEE SH.#5 OF 9

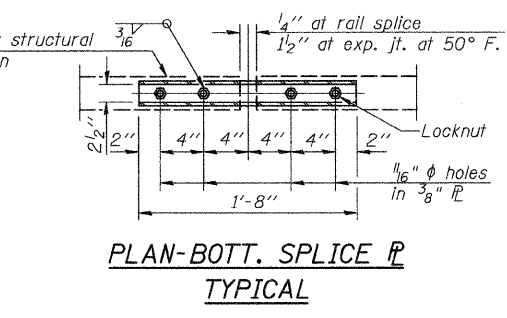
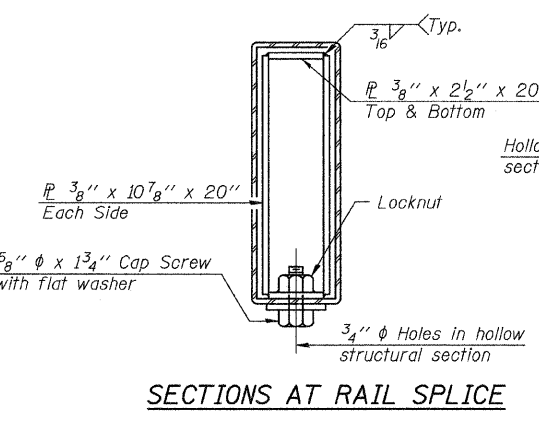
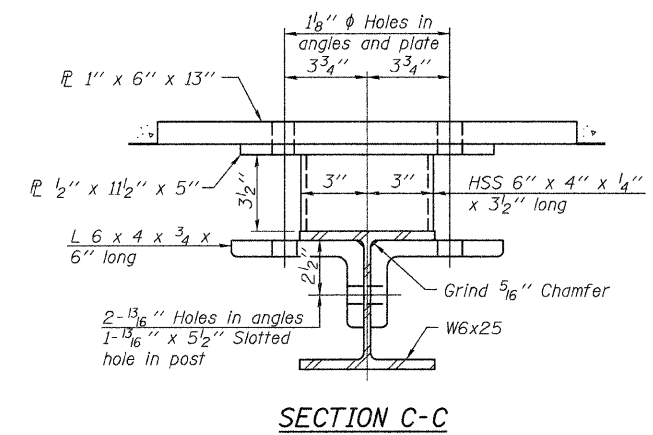
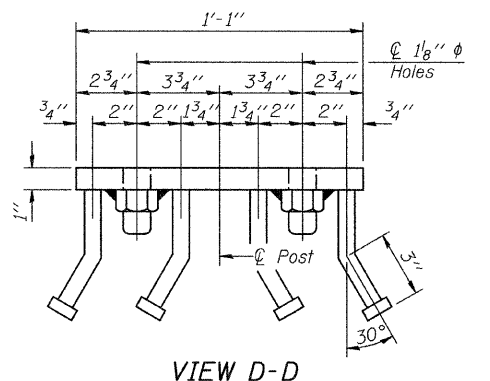
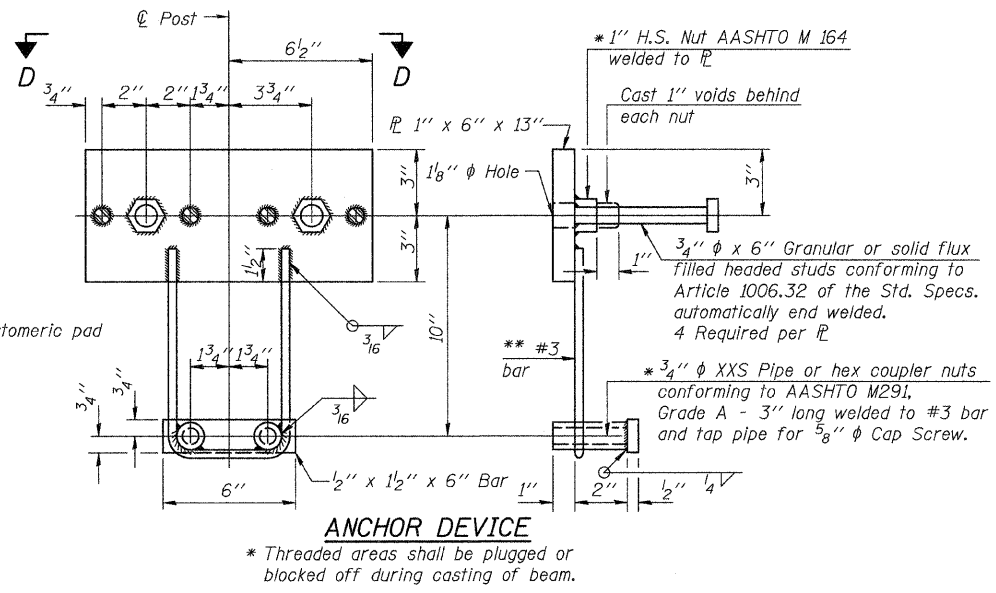
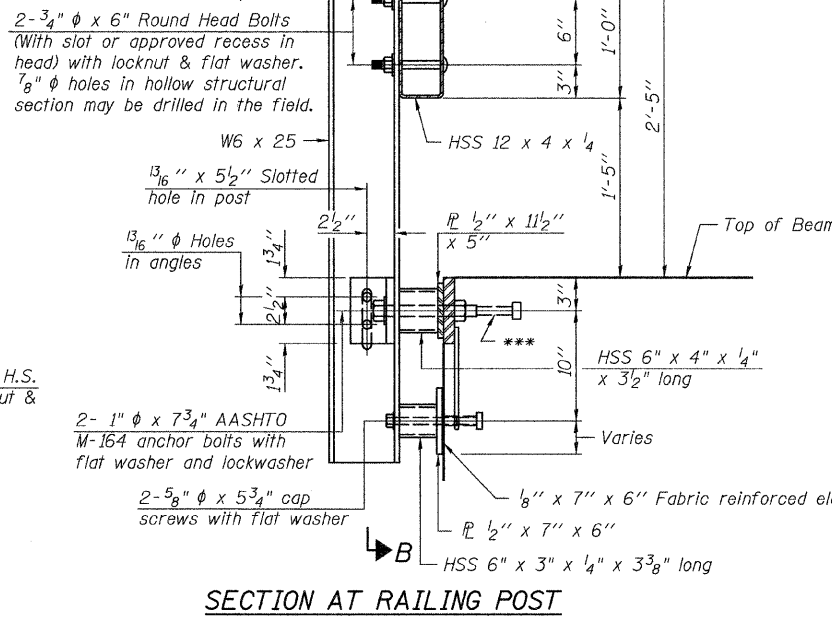
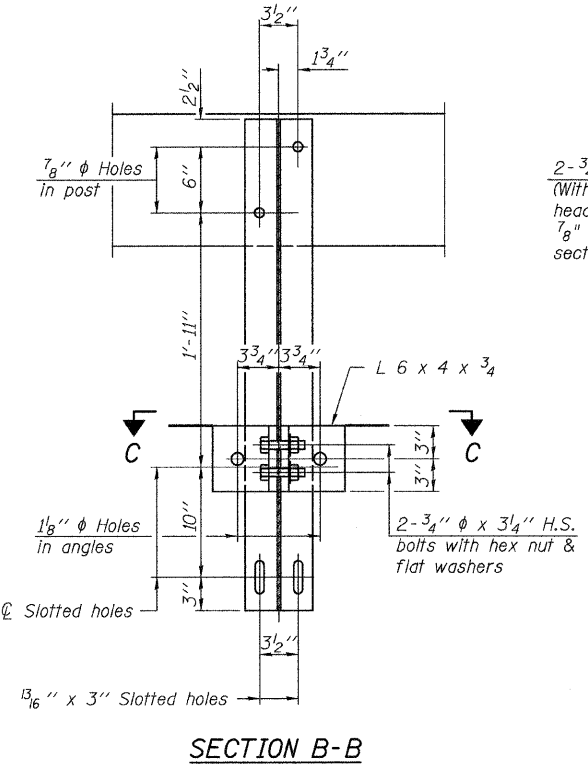


**NOTES**

All field drilled holes shall be coated with an approved zinc rich paint before erection. For multi-span bridges, sufficient 1/4" x 6" x 1'-2" galvanized steel shims shall be provided to align rail between adjacent spans. Cost included with Steel Railing, Type S-1.

All steel rail elements shall be galvanized according to Article 509.05 of the Standard Specifications.

\*\*\* The studs of the anchor devices shall be placed below the top reinforcement bars and the outermost longitudinal reinforcement bar shall be placed directly above the studs of the rail post anchor device.



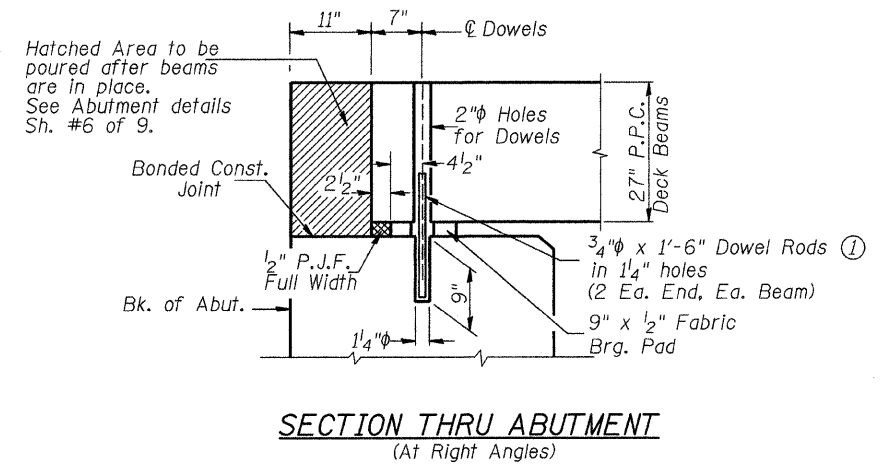
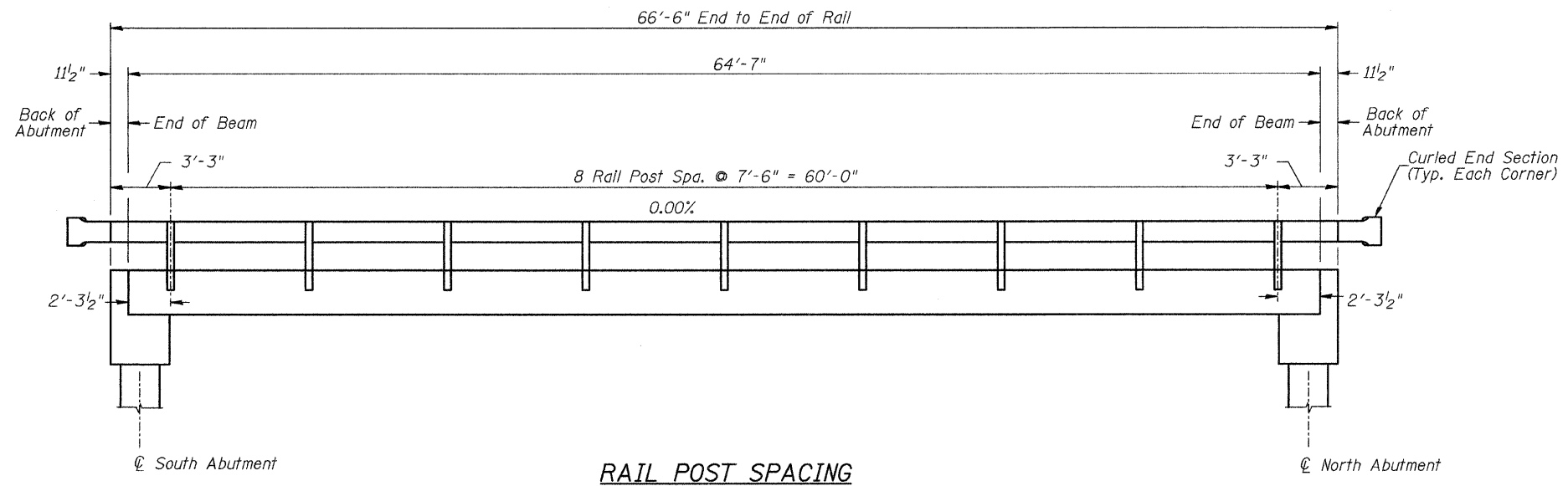
\*\* Whenever the lower insert assemblies interfere with strand locations, the #3 bars shall be cut and adjusted in order to allow raising or lowering of the lower inserts. Maximum adjustment not to exceed 2".

**BILL OF MATERIAL**

Item	Unit	Quantity
Steel Railing, Type S-1	FOOT	133

**STEEL RAILING, TYPE S-1**  
**IROQUOIS COUNTY**  
**SECTION 02-01122-00-BR**  
**T.R. 14A OVER LOUIS CREEK**

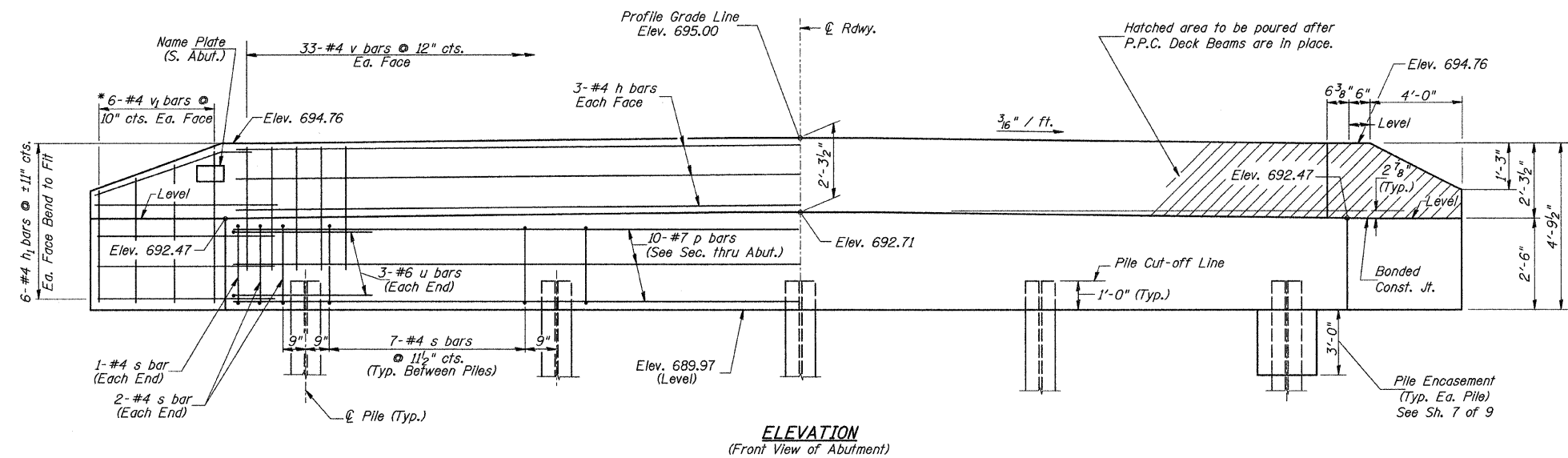
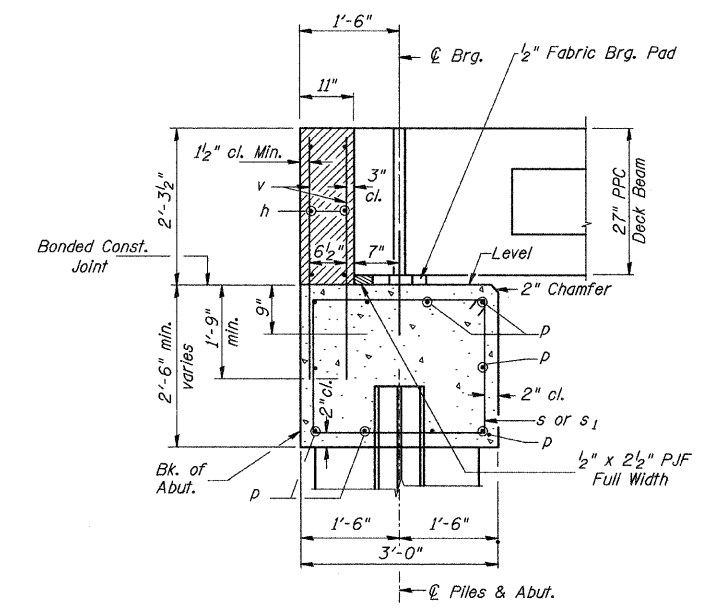
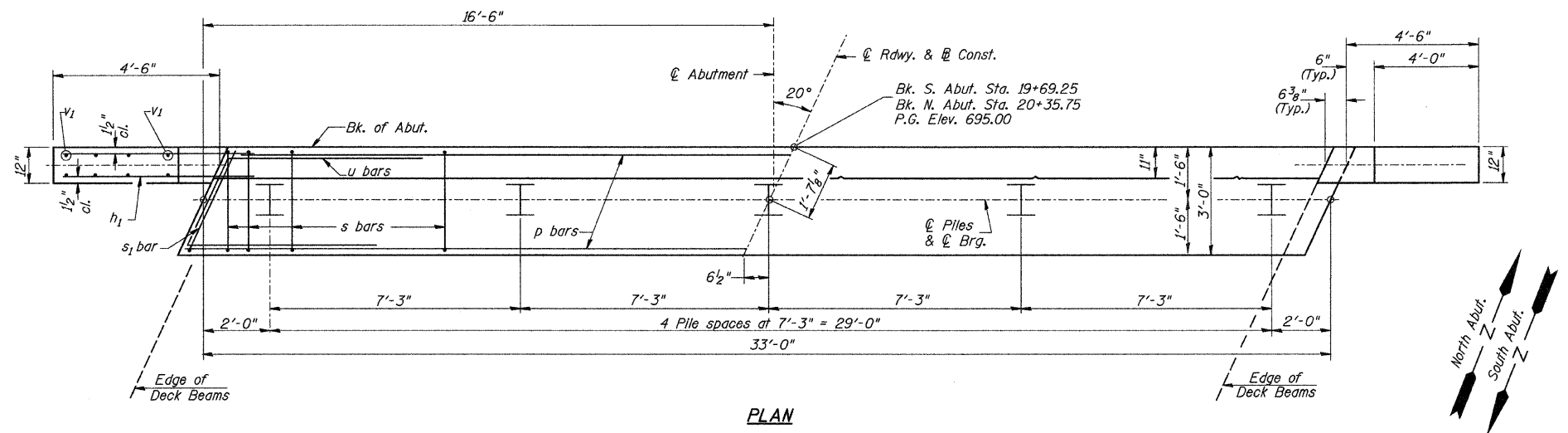
SHEET NO. 4 9 SHEETS	ROUTE NO. TR 14A	SECTION 02-01122-00-BR	COUNTY IROQUOIS	TOTAL SHEETS 22	SHEET NO. 10
	S.N. 038-3062		CONTRACT NO. 87460		
	FED. ROAD DIST. NO. 7 ILLINOIS		FED. AID PROJECT BROS-0075(138)		



① Dowel Rods to be grouted after beams are in place and allowed to cure (Min. 24 hr.) prior to grouting the shear keys.

**SUPERSTRUCTURE DETAILS  
AND RAIL POST SPACING  
IROQUOIS COUNTY  
SECTION 02-01122-00-BR  
T.R. 14A OVER LOUIS CREEK**

SHEET NO. 5  9 SHEETS	ROUTE NO.	SECTION	COUNTY	TOTAL SHEETS	SHEET NO.
	TR 14A	02-01122-00-BR	IROQUOIS	22	11
	S.N. 038-3062		CONTRACT NO. 87460		
FED. ROAD DIST. NO. 7		ILLINOIS	FED. AID PROJECT BR05-0075(138)		



**TWO ABUTMENTS  
BILL OF MATERIAL**

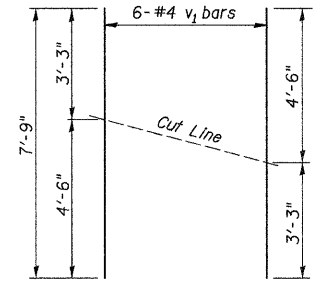
BAR	NO.	SIZE	LENGTH	SHAPE
h	12	#4	32'-9"	—
h1	48	#4	6'-6"	—
p	20	#7	32'-9"	—
s	64	#4	10'-5"	□
s1	2	#4	7'-10"	□
u	12	#6	11'-9"	□
v	132	#4	4'-0"	—
v1	24	#4	7'-9"	—
Concrete Structures			CU YD	27.2
Reinforcement Bars			POUND	2,950
Structure Excavation			CU YD	70
Name Plates			EACH	1
Furnishing Steel Piles			FOOT	507
HP10x42				
Driving Piles			FOOT	507
Test Pile Steel HP10x42			EACH	1
Concrete Encasement			CU YD	3.5

① See Special Provisions

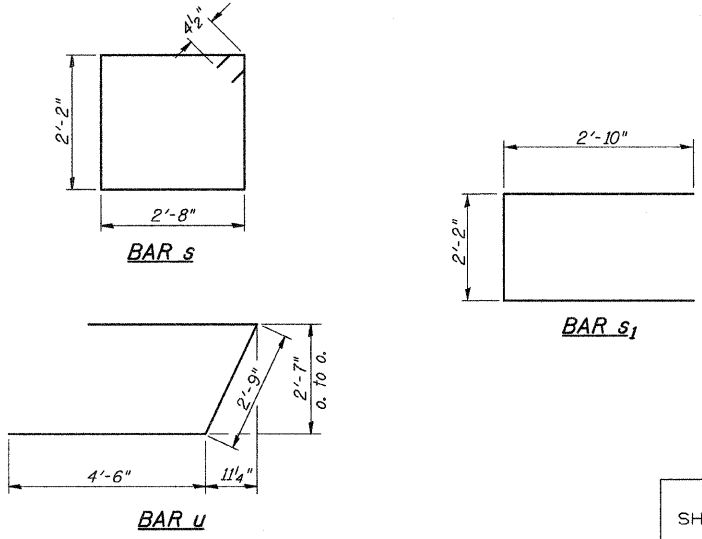
**DESIGN STRESSES**  
 $f'_c = 3,500$  p.s.i.  
 $f_y = 60,000$  p.s.i.

**PILE DATA**  
 Type & Size: Steel HP10x42  
 Nominal Required Bearing: 320 kips  
 Factored Resistance Available: 160 kips  
 Est. Length: 55' South Abutment  
 58' North Abutment  
 No. Req'd.: 10 (Includes 1 Test Pile at North Abut.)

**NOTES**  
 1. The Backwall and the portion of the Wingwalls above the bonded construction joint shall be cast against the in-place beam.  
 2. Reinforcement bars shall conform to ASTM A706 Grade 60.

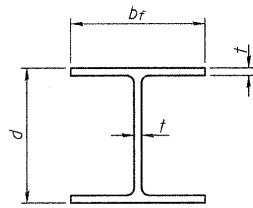


**BAR CUTTING DIAGRAM**  
 \* Order v1 bars full length. Cut as shown and use remainder of bars in opposite face.



**ABUTMENTS  
IROQUOIS COUNTY  
SECTION 02-01122-00-BR  
T.R. 14A OVER LOUIS CREEK**

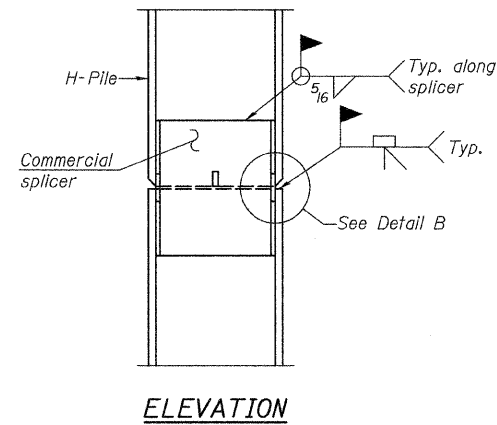
SHEET NO. 6 9 SHEETS	ROUTE NO.	SECTION	COUNTY	TOTAL SHEETS	SHEET NO.
	TR 14A	02-01122-00-BR	IROQUOIS	22	12
	S.N. 038-3062		CONTRACT NO. 87460		
FED. ROAD DIST. NO. 7 ILLINOIS		FED. AID PROJECT BROS-0075(138)			



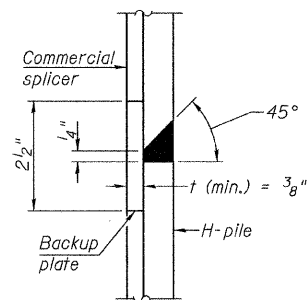
**STEEL PILE TABLE**

Designation	Depth d	Flange width b <sub>f</sub>	Web and Flange thickness t	Encasement diameter
HP 14x117	14 1/4"	14 7/8"	1 3/16"	30"
x102	14"	14 3/4"	1/16"	30"
x89	13 7/8"	14 3/4"	5/8"	30"
x73	13 5/8"	14 5/8"	1/2"	30"
HP 12x84	12 1/4"	12 1/4"	1/16"	24"
x74	12 1/8"	12 1/4"	5/8"	24"
x63	12"	12 1/8"	1/2"	24"
x53	11 3/4"	12"	7/16"	24"
HP 10x57	10"	10 1/4"	9/16"	24"
x42	9 3/4"	10 1/8"	7/16"	24"
HP 8x36	8"	8 1/8"	7/16"	18"

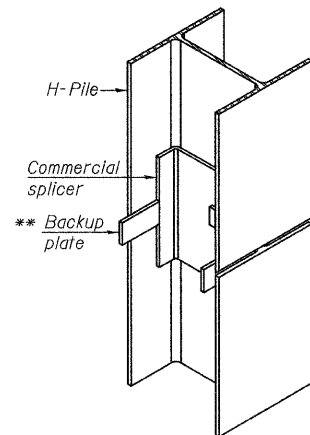
Note:  
The steel H-piles shall be according to AASHTO M270 Grade 50.



**ELEVATION**

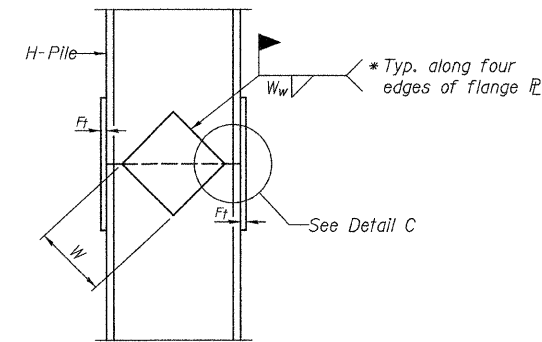


**DETAIL "B"**

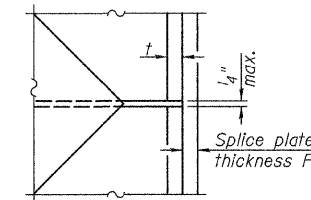


**ISOMETRIC VIEW**

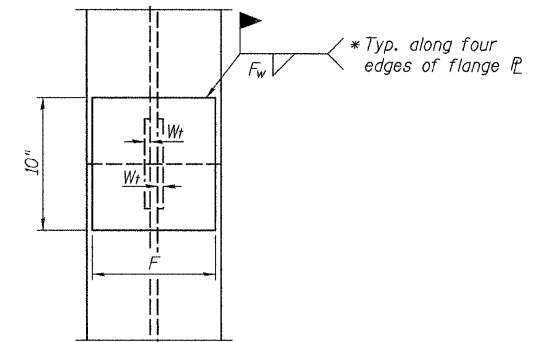
**WELDED COMMERCIAL SPLICE**



**ELEVATION**

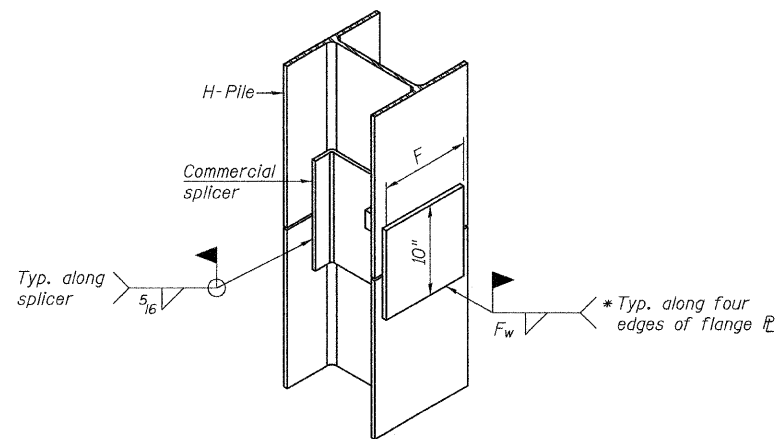


**DETAIL C**



**END VIEW**

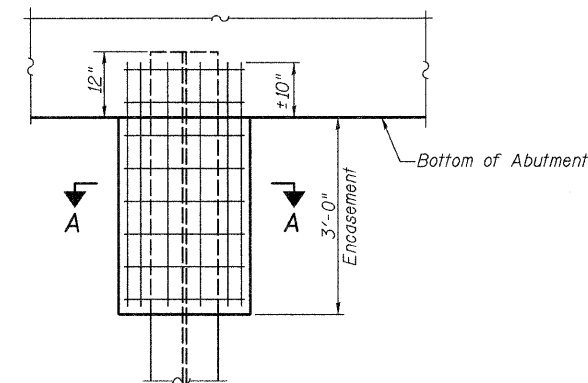
Designation	F	F <sub>t</sub>	F <sub>w</sub>	W	W <sub>t</sub>	W <sub>w</sub>
HP 14x117	12 1/2"	1"	7/8"	7 3/4"	5 8/8"	1 1/2"
x102	12 1/2"	7/8"	3/4"	7 3/4"	5 8/8"	1 1/2"
x89	12 1/2"	3/4"	1/16"	7 3/4"	5 8/8"	1 1/2"
x73	12 1/2"	5/8"	9/16"	7 3/4"	5 8/8"	1 1/2"
HP 12x84	10"	7/8"	1/16"	6 1/2"	5 8/8"	1 1/2"
x74	10"	7/8"	1/16"	6 1/2"	5 8/8"	1 1/2"
x63	10"	5/8"	1/2"	6 1/2"	1 1/2"	3/8"
x53	10"	5/8"	1/2"	6 1/2"	1 1/2"	3/8"
HP 10x57	8"	3/4"	9/16"	5 1/4"	1 1/2"	3/8"
x42	8"	5/8"	9/16"	5 1/4"	1 1/2"	3/8"
HP 8x36	7"	5/8"	7/16"	4 1/4"	1 1/2"	3/8"



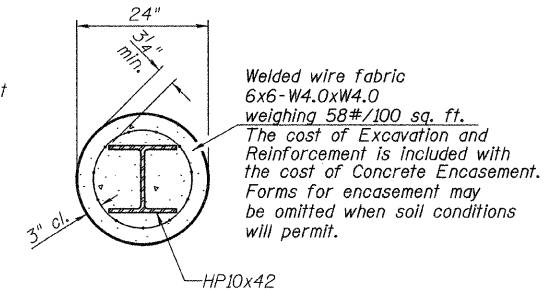
**ISOMETRIC VIEW**

**WELDED COMMERCIAL SPLICE ALTERNATE**

- \* Interrupt welds 1/4" from end of web and/or each flange.
- \*\* Remove portions of backup plates that extend outside the flanges.



**ABUTMENT ELEVATION**



**SECTION A-A**

**PILE ENCASEMENT**

**PILE DETAILS**  
**IROQUOIS COUNTY**  
**SECTION 02-01122-00-BR**  
**T.R. 14A OVER LOUIS CREEK**

SHEET NO. 7 9 SHEETS	ROUTE NO.	SECTION	COUNTY	TOTAL SHEETS	SHEET NO.
	TR 14A	02-01122-00-BR	IROQUOIS	22	13
	S.N. 038-3062			CONTRACT NO. 87460	
FED. ROAD DIST. NO. 7 ILLINOIS			FED. AID PROJECT BROS-0075(138)		

**Midwest Testing Services, Inc.**  
3705 Progress Blvd.  
Peoa, IL 61354

**BORING LOG**  
Sheet 1 of 3

Phone: 815-223-6696  
Fax: 815-223-6659  
e-mail: mts37@comcast.net

Client: Hutchison Engineering, Inc.  
Project Name: Township Road 14A Section 02-01122-00-BR  
Project Site: Iroquois County

Boring No. B-1  
Surface Elev. 691.18  
Auger Depth 61' Rotary Depth NA  
Start Date 01/17/10 Finish Date 01/17/10

Location: South Abutment West of Centerline  
Station: 19+67 4' LT

(DEPTH) ELEV.	DESCRIPTION OF MATERIALS	Grain Size Log	Depth in feet	SAMPLES					DRILLED BY	REMARKS	
				Sample No.	Sample Type	Gr (USF)	N Value (Blows)	Blow Count			Moisture (%)
691.18											
690.18	Asphalt over Aggregate		1								
688.18	Stiff Black/Grey Silty Clay Fill		3	1	SS	1.8	11	B	28		
687.18			4								
686.18			5								
685.18			6	2	SS	1.9	11	B	29		
684.18	Medium Stiff Black/Brown/Grey Silty Clay		7								
683.18			8	3	SS	1.4	7	B	30		
682.18			9								
681.18	Medium Stiff to Stiff Gray/Brown Silty Clay		10								
680.18			11	4	SS	1.5	8	B	34		
679.18			12								
678.18	Medium Stiff Gray/Brown very Silty Clay		13	5	SS	1.2	5	B	30		
677.18			14								
676.18	Medium Stiff to Stiff Gray/Brown very Silty Clay with Silt & Sand layers		15	6	SS	1.6	7	B	20		
675.18			16								
674.18	Very Stiff Gray Silty Clay Till		17								
673.18			18	7	SS	3.9	17	B	15		
672.18			19								
671.18	Hard Gray Silty Clay Till		20	8	SS	5.2	28	B	14		

Groundwater Data: Static water level after auger removal - elevation 646.18  
Comments:

**Midwest Testing Services, Inc.**  
3705 Progress Blvd.  
Peoa, IL 61354

**BORING LOG**  
Sheet 2 of 3

Phone: 815-223-6696  
Fax: 815-223-6659  
e-mail: mts37@comcast.net

Client: Hutchison Engineering, Inc.  
Project Name: Township Road 14A Section 02-01122-00-BR  
Project Site: Iroquois County

Boring No. B-1  
Surface Elev. 691.18  
Auger Depth 61' Rotary Depth NA  
Start Date 01/17/10 Finish Date 01/17/10

Location: South Abutment West of Centerline  
Station: 19+67 4' LT

(DEPTH) ELEV.	DESCRIPTION OF MATERIALS	Grain Size Log	Depth in feet	SAMPLES					DRILLED BY	REMARKS	
				Sample No.	Sample Type	Gr (USF)	N Value (Blows)	Blow Count			Moisture (%)
691.18											
689.18	Hard Gray Silty Clay Till		22								
688.18			23	9	SS	5.0	22	B	14		
687.18			24								
686.18			25	10	SS	1.6	13	B	17		
685.18			26								
684.18	Stiff Gray Silty Clay Till with Sand layers		27								
683.18			28								
682.18			29								
681.18			30	12	SS	1.6	13	B	16		
680.18			31								
679.18			32								
678.18			33								
677.18	Very Stiff Gray Clay Till		34								
676.18			35	14	SS	5.1	15	B	25		
675.18			36								
674.18			37								
673.18			38								
672.18			39								
671.18	Stiff Gray Clay with Silt lenses		40								
670.18			41	16	SS	2.1	10	B	29		

Groundwater Data: Static water level after auger removal - elevation 646.18  
Comments:

**Midwest Testing Services, Inc.**  
3705 Progress Blvd.  
Peoa, IL 61354

**BORING LOG**  
Sheet 3 of 3

Phone: 815-223-6696  
Fax: 815-223-6659  
e-mail: mts37@comcast.net

Client: Hutchison Engineering, Inc.  
Project Name: Township Road 14A Section 02-01122-00-BR  
Project Site: Iroquois County

Boring No. B-1  
Surface Elev. 691.18  
Auger Depth 61' Rotary Depth NA  
Start Date 01/17/10 Finish Date 01/17/10

Location: South Abutment West of Centerline  
Station: 19+67 4' LT

(DEPTH) ELEV.	DESCRIPTION OF MATERIALS	Grain Size Log	Depth in feet	SAMPLES					DRILLED BY	REMARKS	
				Sample No.	Sample Type	Gr (USF)	N Value (Blows)	Blow Count			Moisture (%)
691.18											
648.18			53								
647.18			54								
646.18	Very Stiff Grey/Green Silty Clay Till		45	18	SS	5.0	18	B/S	14		Water
645.18			46								
644.18			47								
643.18			48								
642.18			49								
641.18			50	20	SS	6.2	29	S	12		
640.18			51								
639.18			52								
638.18			53								
637.18	Very Stiff to Hard Grey/Green Silty Clay Till		54								
636.18			55								
635.18			56	22	SS	5.4	29	S	12		
634.18			57								
633.18			58								
632.18			59								
631.18			60								
630.18			61	24	SS	5.2	30	S	12		
629.18	Bottom of Boring		62								

Groundwater Data: Static water level after auger removal - elevation 646.18  
Comments:

**SOIL BORING LOGS**  
**IROQUOIS COUNTY**  
**SECTION 02-01122-00-BR**  
**T.R. 14A OVER LOUIS CREEK**

SHEET NO. 8 9 SHEETS	ROUTE NO.	SECTION	COUNTY	TOTAL SHEETS	SHEET NO.
	TR 14A	02-01122-00-BR	IROQUOIS	22	14
	S.N. 038-3062		CONTRACT NO. 87460		
FED. ROAD DIST. NO. 7 ILLINOIS			FED. AID PROJECT BROS-0075(138)		

**Midwest Testing Services, Inc.**  
3705 Progress Blvd.  
Peru, IL 61354

**BORING LOG**  
Sheet 1 of 3

Phone: 815-223-6696  
Fax: 815-223-6659  
e-mail: mts37@comcast.net

Client: **Hutchison Engineering, Inc.**  
Project Name: **Township Road 14A Section 02-01122-00-BR**  
Project Site: **Iroquois County**

Boring No. **B-2**  
Surface Elev. **691.51**  
Auger Depth **61'** Rotary Depth **NA**  
Start Date **01/17/10** Finish Date **01/17/10**

Location: North Aburnon East of Centerline  
Station: 20+31 4' RT

DEPTH ELEV.	DESCRIPTION OF MATERIALS	Cone Tip in ft	Depth in ft	SAMPLES					DRILLED BY	REMARKS
				Sample No.	Sample Type	Qu. (TSF)	N Value (Blows)	Blow/Shear		
691.51	Asphalt over Aggregate		1						Randy Salsinski District D-120	
689.51	Stiff Black/Brown Silty Clay P/I		2							
688.51			3	1	SS	1.6	9	B		29
687.51			4							
686.51	Medium Stiff Black Silty Clay Fill		5	2	SS	1.5	6	B		30
685.51			6							
684.51	Medium Stiff Black/Brown/Gray Silty Clay		7	3	SS	1.3	6	B		31
683.51			8							
682.51			9							
681.51	Medium Stiff Gray/Brown Silty Clay		10	4	SS	1.0	5	B	33	
680.51			11							
679.51			12							
678.51	Medium Stiff Gray/Brown very Silty Clay		13	5	SS	1.0	6	B	31	
677.51			14							
676.51			15	6	SS	1.9	17	B	17	
675.51			16							
674.51	Stiff to Very Stiff Gray Silty Clay Till		17	7	SS	2.3	16	B	16	
673.51			18							
672.51			19							
671.51			20	8	SS	2.5	13	B	14	

Groundwater Data: Static water level after auger removal - elevation 646.18  
Comments:

**Midwest Testing Services, Inc.**  
3705 Progress Blvd.  
Peru, IL 61354

**BORING LOG**  
Sheet 2 of 3

Phone: 815-223-6696  
Fax: 815-223-6659  
e-mail: mts37@comcast.net

Client: **Hutchison Engineering, Inc.**  
Project Name: **Township Road 14A Section 02-01122-00-BR**  
Project Site: **Iroquois County**

Boring No. **B-2**  
Surface Elev. **691.51**  
Auger Depth **61'** Rotary Depth **NA**  
Start Date **01/17/10** Finish Date **01/17/10**

Location: North Aburnon East of Centerline  
Station: 20+31 4' RT

DEPTH ELEV.	DESCRIPTION OF MATERIALS	Cone Tip in ft	Depth in ft	SAMPLES					DRILLED BY	REMARKS
				Sample No.	Sample Type	Qu. (TSF)	N Value (Blows)	Blow/Shear		
691.51			21						Randy Salsinski District D-120	
689.51			22							
688.51			23	9	SS	2.0	12	D		14
687.51			24							
686.51	Stiff Gray Silty Clay Till		25	10	SS	1.9	12	B		15
685.51			26							
684.51			27							
683.51			28							
682.51			29							
681.51			30	12	SS	2.3	11	B		14
680.51			31							
679.51			32							
678.51			33							
677.51	Very Stiff Gray Clay Till		34							
676.51			35	14	SS	3.0	15	B		15
675.51			36							
674.51			37							
673.51			38							
672.51			39							
671.51			40	16	SS	1.9	9	B	28	
670.51	Stiff Gray Clay with Silt layers		41							

Groundwater Data: Static water level after auger removal - elevation 646.18  
Comments:

**Midwest Testing Services, Inc.**  
3705 Progress Blvd.  
Peru, IL 61354

**BORING LOG**  
Sheet 3 of 3

Phone: 815-223-6696  
Fax: 815-223-6659  
e-mail: mts37@comcast.net

Client: **Hutchison Engineering, Inc.**  
Project Name: **Township Road 14A Section 02-01122-00-BR**  
Project Site: **Iroquois County**

Boring No. **B-2**  
Surface Elev. **691.51**  
Auger Depth **61'** Rotary Depth **NA**  
Start Date **01/17/10** Finish Date **01/17/10**

Location: North Aburnon East of Centerline  
Station: 20+31 4' RT

DEPTH ELEV.	DESCRIPTION OF MATERIALS	Cone Tip in ft	Depth in ft	SAMPLES					DRILLED BY	REMARKS
				Sample No.	Sample Type	Qu. (TSF)	N Value (Blows)	Blow/Shear		
691.51			42						Randy Salsinski District D-120	
688.51			43							
687.51	Stiff to Very Stiff Gray/Green Silty Clay Till with Sand layers		44							
686.51			45							
685.51			46	18	SS	2.7	13	B		16
684.51			47							
683.51			48							
682.51			49							
681.51	Hard Gray/Green Silty Clay Till with Silt layers		50	20	SS	4.7	29	B		13
680.51			51							
679.51			52							
678.51			53							
677.51			54							
676.51	Very Stiff to Hard Gray/Green Silty Clay Till		55	22	SS	4.5	27	B		13
675.51			56							
674.51			57							
673.51			58							
672.51			59							
671.51			60							
670.51			61	24	SS	4.5	26	B	14	
669.51			62							

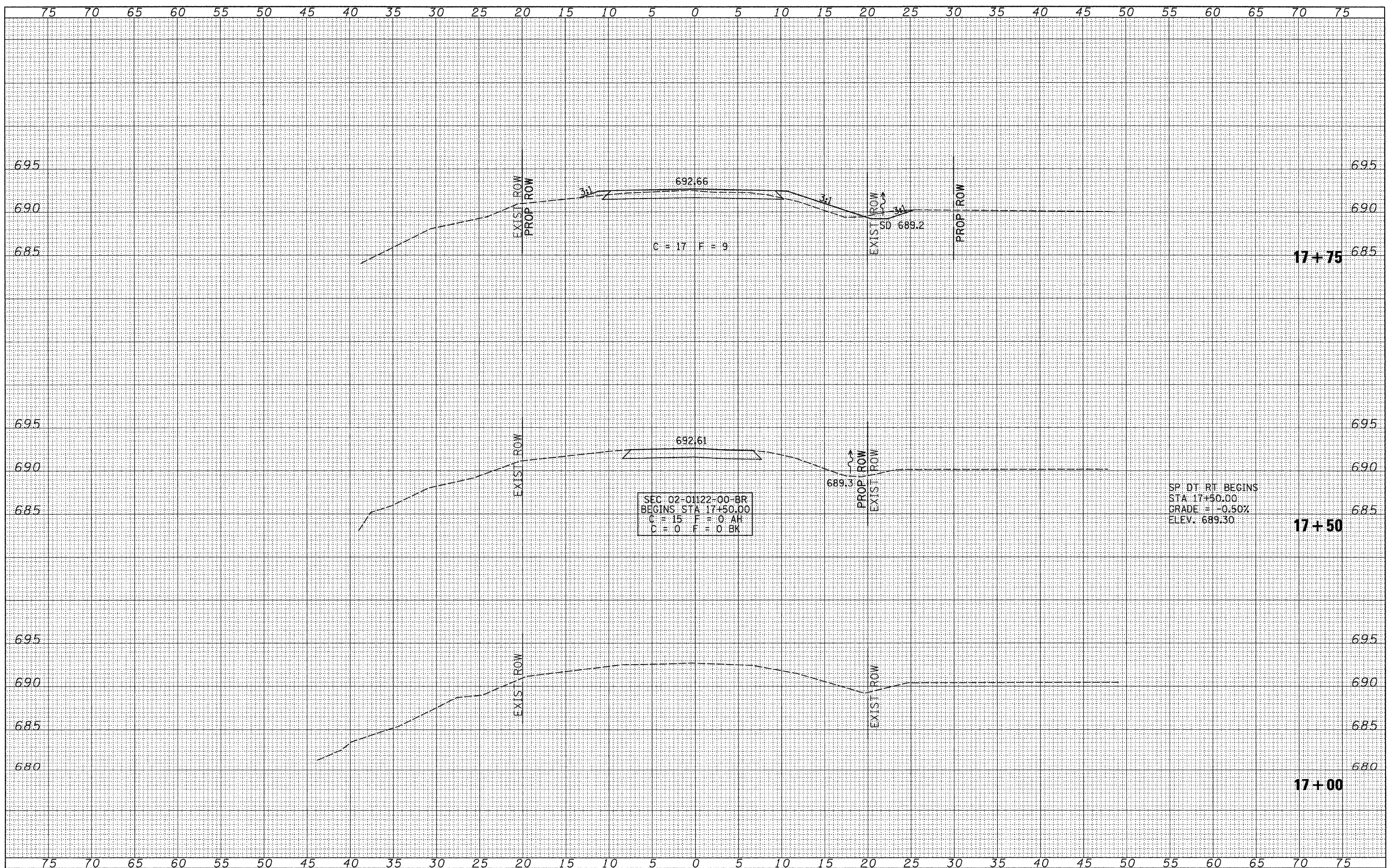
Groundwater Data: Static water level after auger removal - elevation 646.18  
Comments:

**SOIL BORING LOGS**  
**IROQUOIS COUNTY**  
**SECTION 02-01122-00-BR**  
**T.R. 14A OVER LOUIS CREEK**

SHEET NO. 9 9 SHEETS	ROUTE NO. TR 14A	SECTION 02-01122-00-BR	COUNTY IROQUOIS	TOTAL SHEETS 22	SHEET NO. 15
	S.N. 038-3062		CONTRACT NO. 87460		
FED. ROAD DIST. NO. 7		ILLINOIS		FED. AID PROJECT BROS-0075(138)	

DATE	
BY	
FINAL SURVEY	SURVEYED
NOTE BOOK	PLOTTED
NO.	DATE
	AREAS CHECKED

DATE	
BY	
ORIGINAL SURVEY	SURVEYED
NOTE BOOK	PLOTTED
NO.	DATE
	AREAS CHECKED

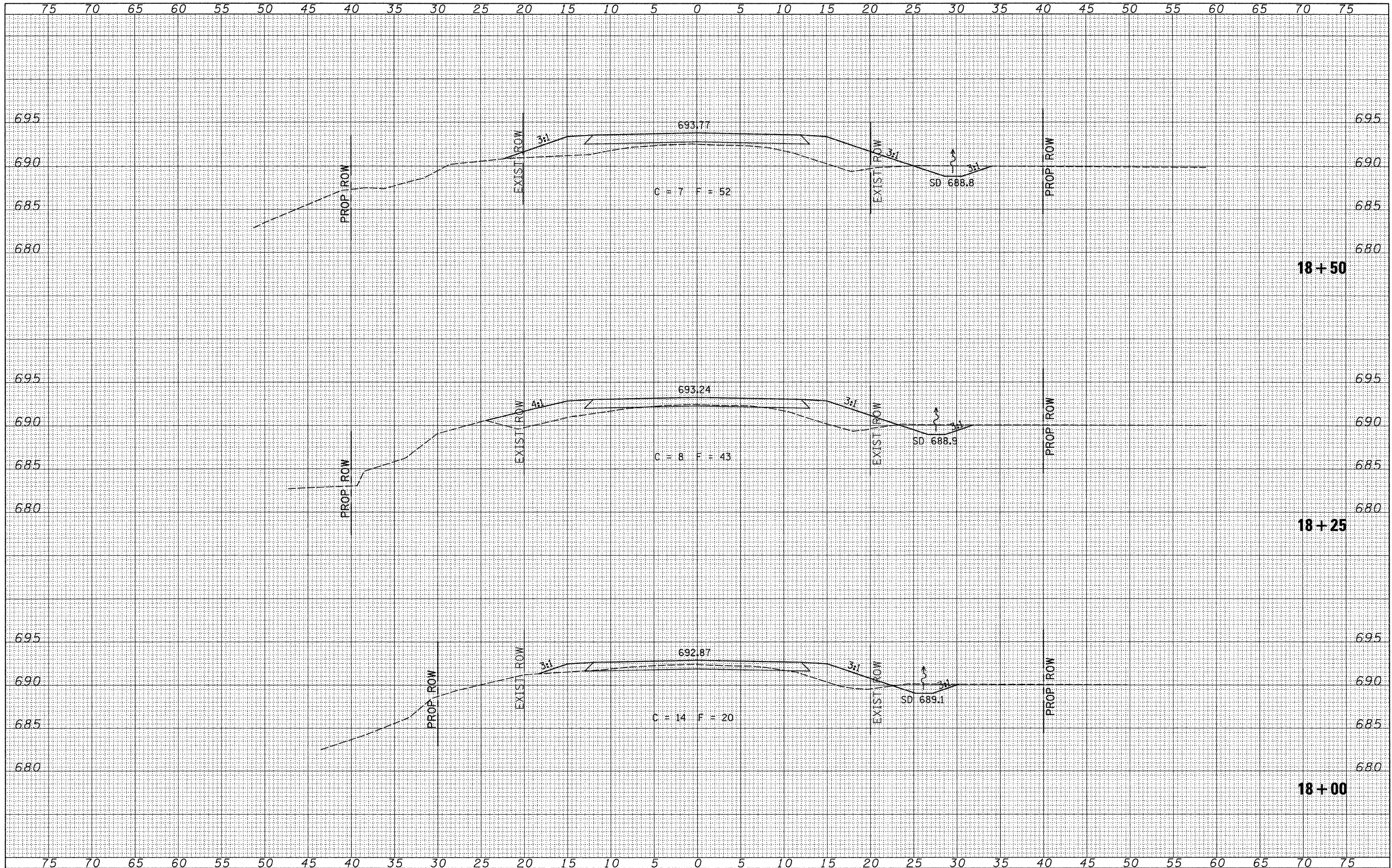


FILE NAME = V:\Bridg\2782-Iroquois\2782xshsta.dgn	USER NAME = jhutchison	DESIGNED -	REVISED -	<b>IROQUOIS COUNTY TOWNSHIP ROAD 14A OVER LOUIS CREEK</b>	<b>CROSS SECTIONS</b>		SCALE: 1"=5'	SHEET NO. 1 OF 7 SHEETS	STA. 17+00.00 TO STA. 17+75.00	RTE. TR 14A	SECTION 02-01122-00-BR	COUNTY IROQUOIS	TOTAL SHEETS 22	SHEET NO. 16	
	PLOT SCALE = 5.0000' / IN.	DRAWN -	REVISED -							FED. ROAD, DIST. NO. 7 ILLINOIS	FED. AID PROJECT NO. BROS-0075(138)				
	PLOT DATE = 3/11/2010	CHECKED -	REVISED -							CONTRACT NO. 87460					
		DATE -	REVISED -												



DATE	BY
FINAL SURVEY	SURVEYED
NOTE BOOK NO.	PLOTTED
	TEMPLATE
	AREAS CHECKED

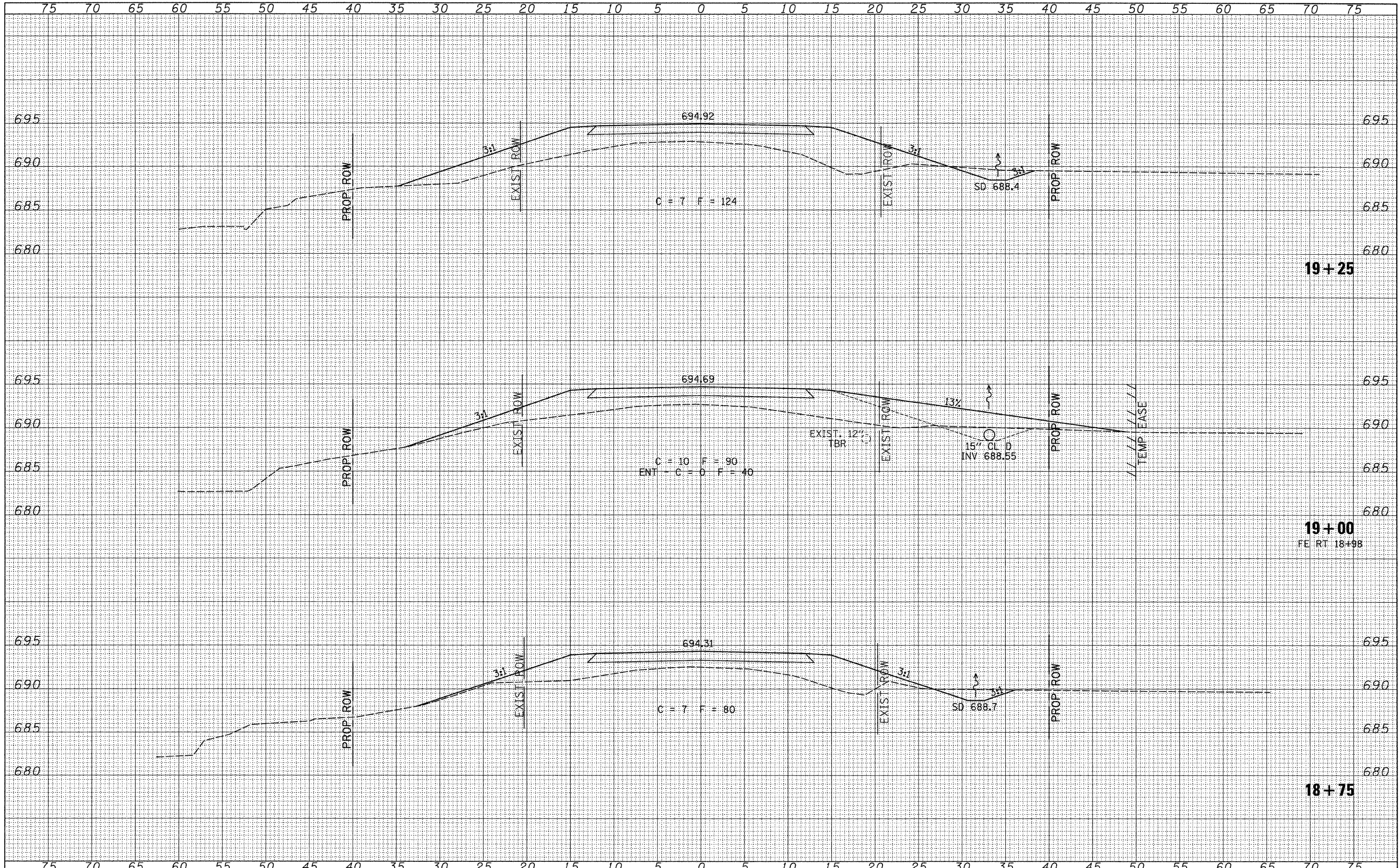
DATE	BY
ORIGINAL SURVEY	SURVEYED
NOTE BOOK NO.	PLOTTED
	TEMPLATE
	AREAS CHECKED



FILE NAME =	USER NAME = jhutchison	DESIGNED -	REVISED -	<b>IROQUOIS COUNTY TOWNSHIP ROAD 14A OVER LOUIS CREEK</b>	<b>CROSS SECTIONS</b>		ROUTE	SECTION	COUNTY	TOTAL SHEETS	SHEET NO.	
V:\bridge\2782-Iroquois\2782xshsta.dgn		DRAWN -	REVISED -		TR 14A	02-01122-00-BR	IROQUOIS	22	17			
		CHECKED -	REVISED -		SCALE: 1"=5'		SHEET NO. 2 OF 7 SHEETS		STA. 18+00.00 TO STA. 18+50.00		CONTRACT NO. 87460	
		DATE -	REVISED -		FED. ROAD, DIST. NO. 7 ILLINOIS FED. AID PROJECT NO. BR05-00751381							

DATE	BY
NO.	NO.
AREAS CHECKED	AREAS CHECKED
DATE	DATE
NO.	NO.
AREAS CHECKED	AREAS CHECKED

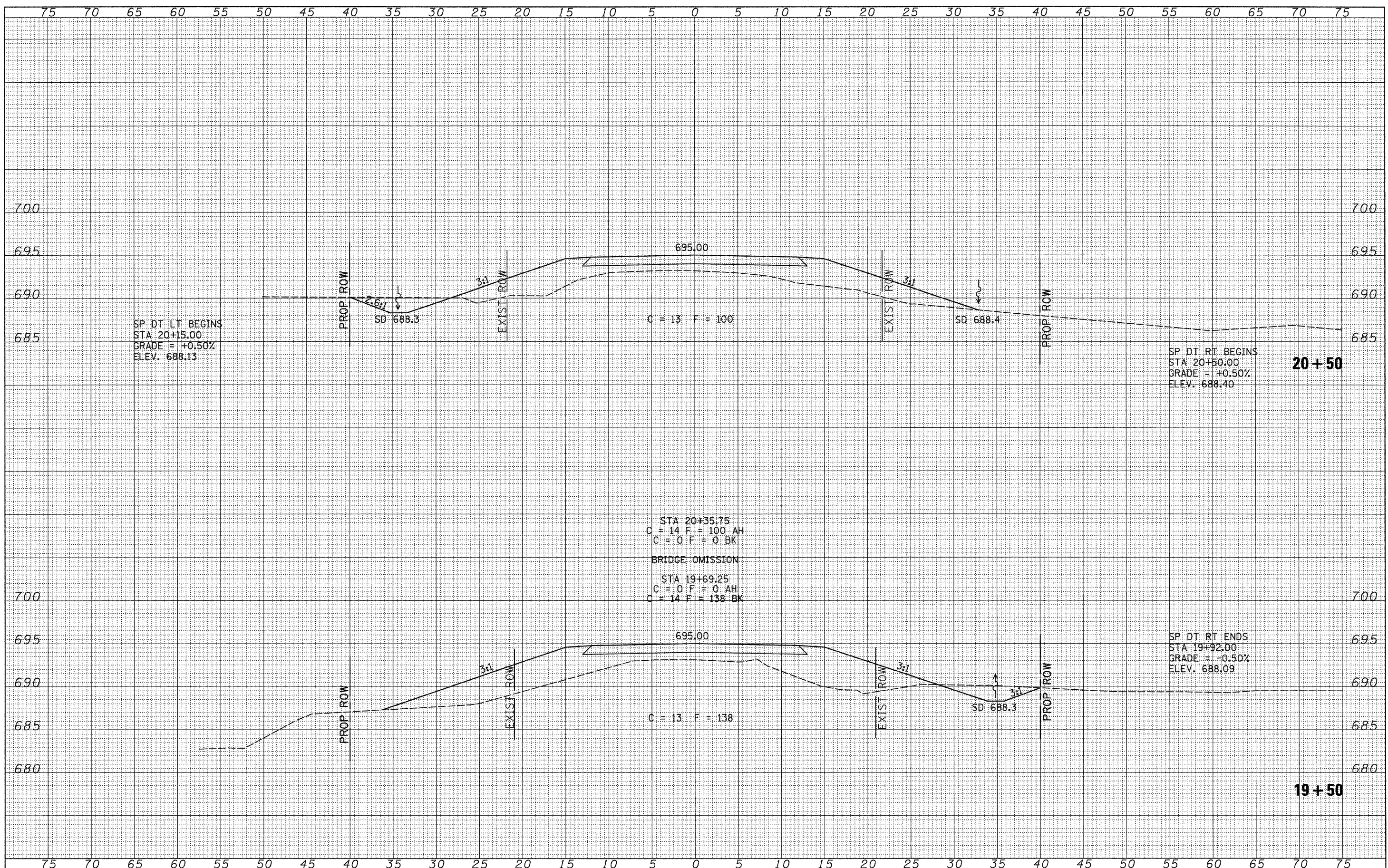
DATE	BY
NO.	NO.
AREAS CHECKED	AREAS CHECKED
DATE	DATE
NO.	NO.
AREAS CHECKED	AREAS CHECKED



FILE NAME = V:\Bridges\2782-Iroquois\2782xshsta.dgn	USER NAME = jhutchison	DESIGNED -	REVISED -	<b>IROQUOIS COUNTY TOWNSHIP ROAD 14A OVER LOUIS CREEK</b>	<b>CROSS SECTIONS</b>		RTE.	SECTION	COUNTY	TOTAL SHEETS	SHEET NO.	
		DRAWN -	REVISED -		SCALE: 1"=5'	SHEET NO. 3 OF 7 SHEETS	STA. 18+75.00	TR 14A	02-01122-00-BR	IROQUOIS	22	18
		CHECKED -	REVISED -				TO STA. 19+25.00	CONTRACT NO. 87460				
		DATE -	REVISED -		FED. ROAD, DIST. NO. 7 ILLINOIS FED. AID PROJECT NO. BR05-0075(13B)							

DATE	
BY	
FINAL SURVEY	
SURVEYED	
PLOTTED	
NOTE BOOK	
AREAS CHECKED	
NO.	

DATE	
BY	
ORIGINAL SURVEY	
SURVEYED	
PLOTTED	
NOTE BOOK	
AREAS CHECKED	
NO.	



SP DT LT BEGINS  
 STA 20+15.00  
 GRADE = +0.50%  
 ELEV. 688.13

SP DT RT BEGINS  
 STA 20+50.00  
 GRADE = +0.50%  
 ELEV. 688.40

**20+50**

STA 20+35.75  
 C = 14 F = 100 AH  
 C = 0 F = 0 BK  
 BRIDGE OMISSION  
 STA 19+69.25  
 C = 0 F = 0 AH  
 C = 14 F = 138 BK

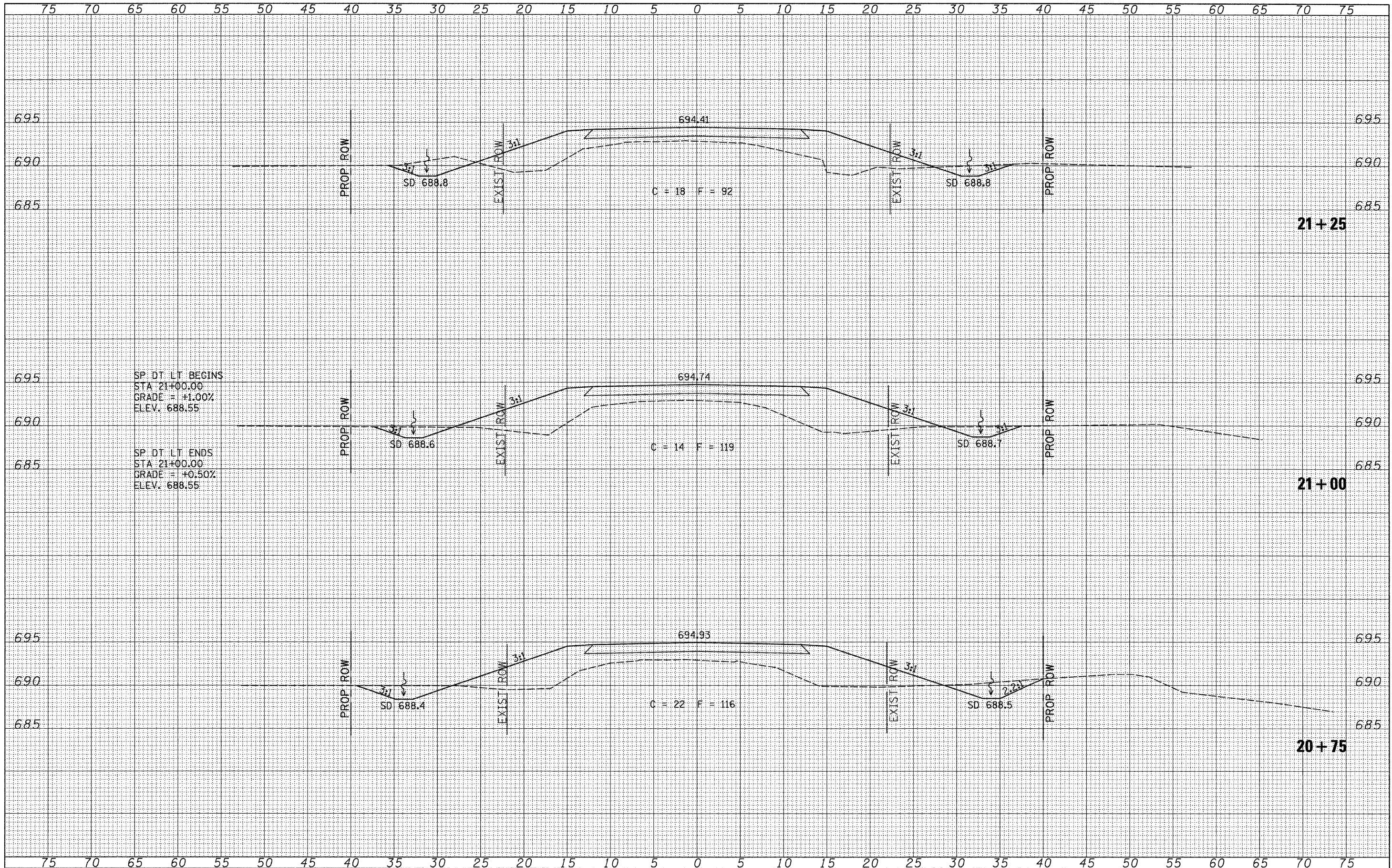
SP DT RT ENDS  
 STA 19+92.00  
 GRADE = -0.50%  
 ELEV. 688.09

**19+50**

FILE NAME =	USER NAME = jhutchison	DESIGNED -	REVISED -	<b>IROQUOIS COUNTY TOWNSHIP ROAD 14A OVER LOUIS CREEK</b>	<b>CROSS SECTIONS</b>			ROUTE	SECTION	COUNTY	TOTAL SHEETS	SHEET NO.
V:\Bridge\2782-Iroquois\2782xsh1a.dgn		DRAWN -	REVISED -		TR 14A	02-01122-00-BR	IROQUOIS	22	19			
	PLOT SCALE = 5.0000' / IN.	CHECKED -	REVISED -		SCALE: 1"=5'			SHEET NO. 4 OF 7 SHEETS			STA. 19+50.00 TO STA. 20+50.00	
	PLOT DATE = 3/11/2010	DATE -	REVISED -		CONTRACT NO. 87460							
											FED. ROAD, DIST. NO. 7 ILLINOIS FED. AID PROJECT NO. BR05-0075(138)	

DATE	
BY	
FINAL SURVEY	
NOTE BOOK NO.	
AREAS CHECKED	

DATE	
BY	
ORIGINAL SURVEY	
NOTE BOOK NO.	
AREAS CHECKED	



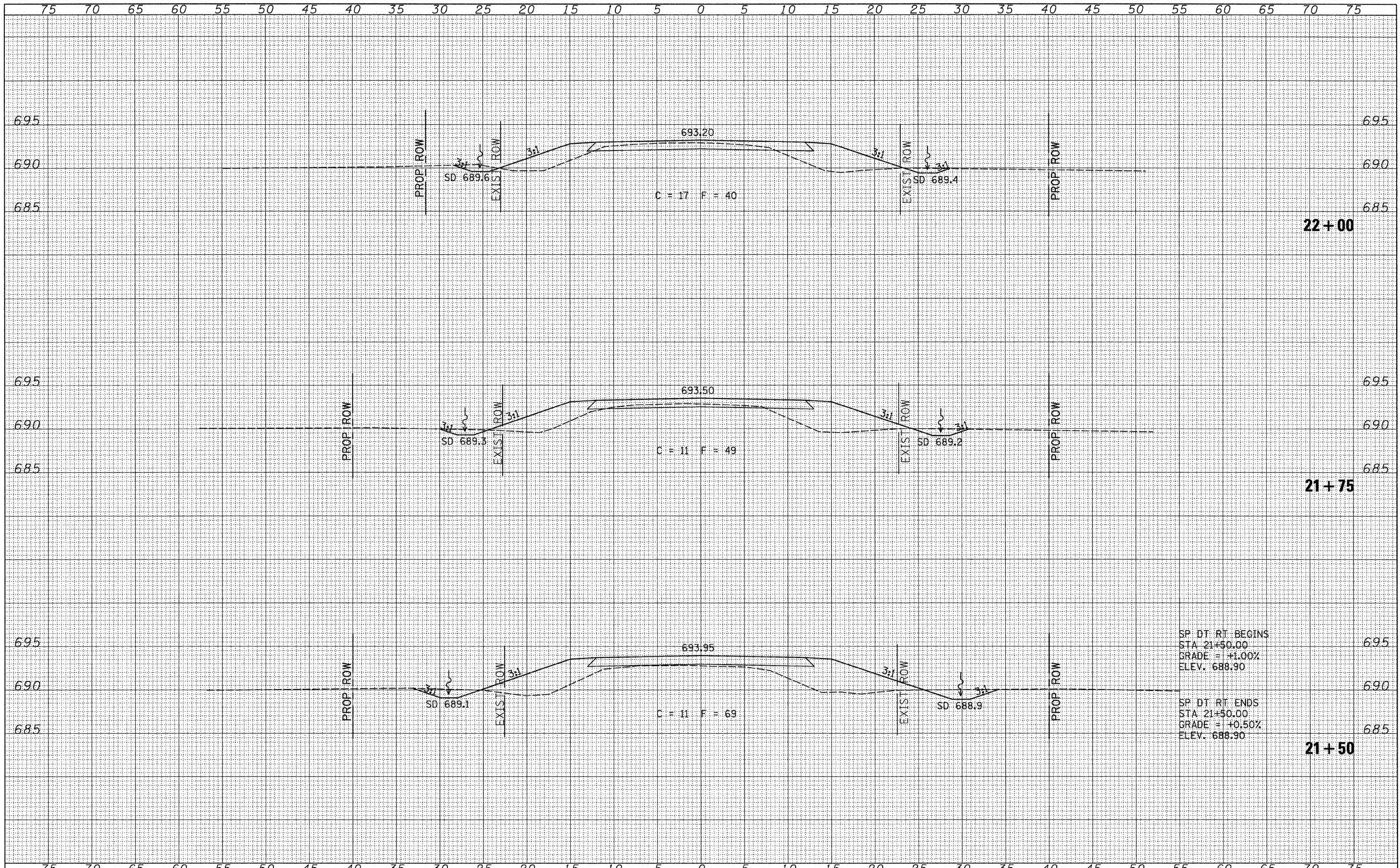
SP. DT. LT. BEGINS  
 STA 21+00.00  
 GRADE = +1.00%  
 ELEV. 688.55

SP. DT. LT. ENDS  
 STA 21+00.00  
 GRADE = +0.50%  
 ELEV. 688.55

FILE NAME = V:\Bridges\2782-Iroquois\2782xshsta.dgn	USER NAME = jhutchison	DESIGNED -	REVISED -	<b>IROQUOIS COUNTY TOWNSHIP ROAD 14A OVER LOUIS CREEK</b>	<b>CROSS SECTIONS</b>		RTE.	SECTION	COUNTY	TOTAL SHEETS	SHEET NO.	
	PLOT SCALE = 5,000' / IN.	DRAWN -	REVISED -		TR 14A	02-01122-00-BR	IROQUOIS	22	20	CONTRACT NO. 87460		
	PLOT DATE = 3/11/2010	CHECKED -	REVISED -		SCALE: 1"=5'		SHEET NO. 5 OF 7 SHEETS		STA. 20+75.00 TO STA. 21+25.00		FED. ROAD. DIST. NO. 7 ILLINOIS FED. AID PROJECT NO. BR05-0075(13B)	
		DATE -	REVISED -									

DATE	
BY	
FINAL SURVEY	SURVEYED
NOTE BOOK	PLOTTED
NO.	DATE
	AREAS CHECKED

DATE	
BY	
ORIGINAL SURVEY	SURVEYED
NOTE BOOK	PLOTTED
NO.	DATE
	AREAS CHECKED



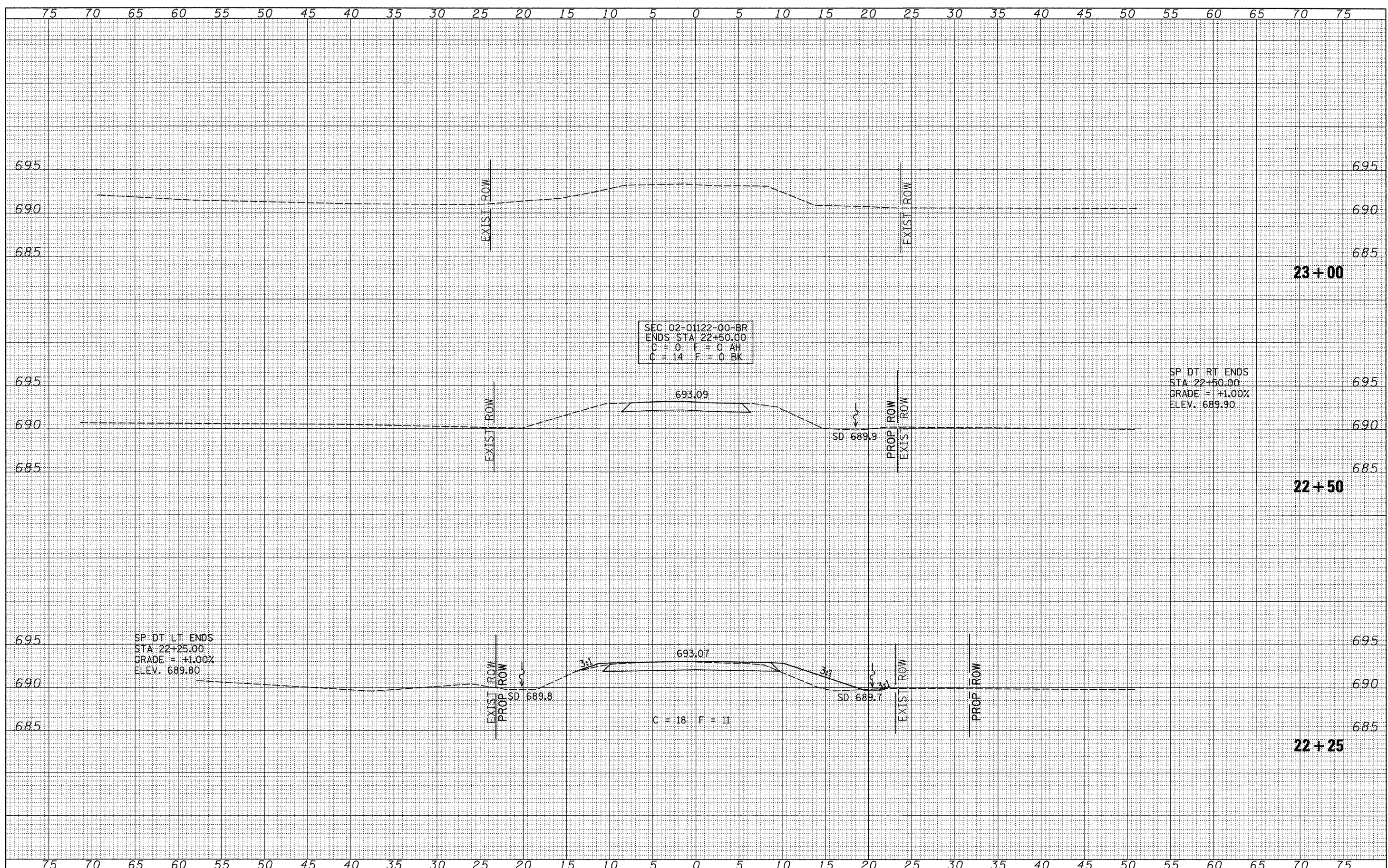
SP. DT. RT. BEGINS  
 STA. 21+50.00  
 GRADE = +1.00%  
 ELEV. 688.90

SP. DT. RT. ENDS  
 STA. 21+50.00  
 GRADE = +0.50%  
 ELEV. 688.90

FILE NAME = V:\Bridges\2782-Iroquois\2782xshsta.dgn	USER NAME = jhurthison	DESIGNED -	REVISED -	<b>IROQUOIS COUNTY TOWNSHIP ROAD 14A OVER LOUIS CREEK</b>	<b>CROSS SECTIONS</b>		RT.:	SECTION	COUNTY	TOTAL SHEETS	SHEET NO.	
		DRAWN -	REVISED -		TR 14A	02-01122-00-BR	IROQUOIS	22	21	CONTRACT NO. 87460		
		CHECKED -	REVISED -		SCALE: 1"=5'		SHEET NO. 6 OF 7 SHEETS		STA. 21+50.00 TO STA. 22+00.00		FED. ROAD, DIST. NO. 7 ILLINOIS FED. AID PROJECT NO. BR05-0075(138)	
		DATE -	REVISED -									

DATE	
BY	
FINAL SURVEY	
SURVEYED	
PLOTTED	
NOTE BOOK	
NO.	
AREAS CHECKED	

DATE	
BY	
ORIGINAL SURVEY	
SURVEYED	
PLOTTED	
NOTE BOOK	
NO.	
AREAS CHECKED	



FILE NAME = V:\Bridge\2782-Iroquois\2782xhsts.dgn	USER NAME = jhutchison	DESIGNED -	REVISED -	<b>IROQUOIS COUNTY TOWNSHIP ROAD 14A OVER LOUIS CREEK</b>	<b>CROSS SECTIONS</b>			RTE.	SECTION	COUNTY	TOTAL SHEETS	SHEET NO.
	PLOT SCALE = 5.0000' / IN.	DRAWN -	REVISED -		TR 14A	02-01122-00-BR	IROQUOIS	22	22			
	PLOT DATE = 3/11/2010	CHECKED -	REVISED -		SCALE: 1"=5'			SHEET NO. 7 OF 7 SHEETS STA. 22+25.00 TO STA. 23+00.00			CONTRACT NO. 87460	
		DATE -	REVISED -		FED. ROAD, DIST. NO. 7 ILLINOIS FED. AID PROJECT NO. BR05-0075138							