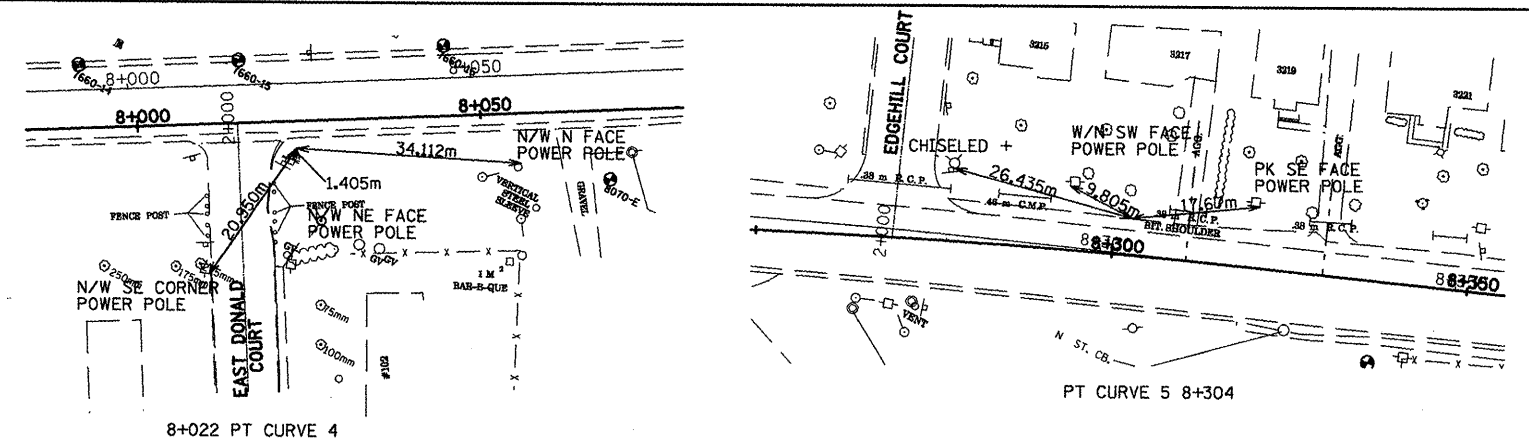


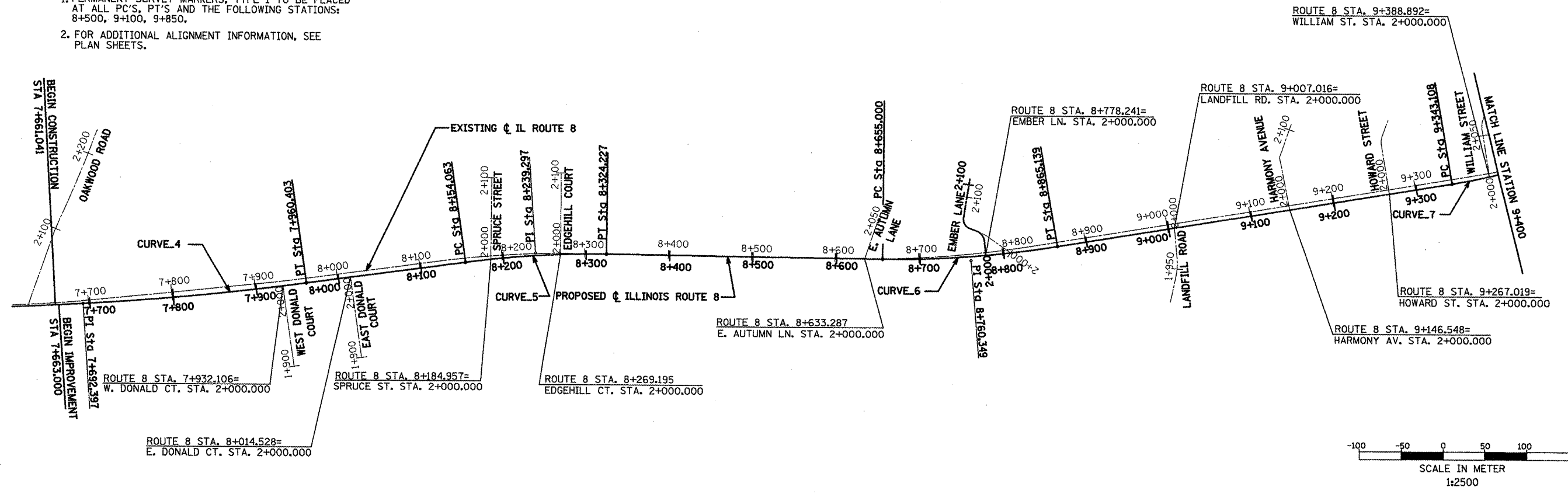
F.A.P. RTE.	SECTION	COUNTY	TOTAL SHEETS	SHEET NO.
399	36R-1,37R-2	TAZEWELL	449	41
STA 7+663.000		TO STA 10+097.000		
FED. ROAD DIST. NO. 4		ILLINOIS FED. AID PROJECT		



BENCHMARKS

NUMBER	STATION	OFFSET (m)	ELEVATION	DESCRIPTION
108	8+056.715	13.327 RT	191.037	RAILROAD SPIKE IN POWER POLE 100' +/- EAST OF EASTERLY INTERSECTION OF DONALD CT. AND ROUTE 8.
109	8+715.841	8.247 RT	205.247	RAILROAD SPIKE IN POWER POLE AT N.W. CORNER OF YARD AT HOUSE 3406 ACROSS FROM L&L MOTEL.
110	9+049.286	16.443 LT	202.813	SQUARE ON S.E. CORNER OF CONCRETE PAD FOR ON NORTH SIDE ELECTRICAL BOX ON N. SIDE OF ROUTE 8 +/- 100' E. OF LANDFILL ENT. AND W. OF HOUSE NO. 3613.
111	9+641.886	12.751 RT	205.191	X ON S. SIDE OF TELEPHONE MANHOLE SOUTH SIDE OF ROUTE 8 AT SUNRISE AV.

- NOTE:
- PERMANENT SURVEY MARKERS, TYPE 1 TO BE PLACED AT ALL PC'S, PT'S AND THE FOLLOWING STATIONS: 8+500, 9+100, 9+850.
 - FOR ADDITIONAL ALIGNMENT INFORMATION, SEE PLAN SHEETS.



CURVE 4
 PI Sta. 7+692.398
 N 445473.723
 E 754054.573
 $\Delta = 8^\circ 20' 40''$ (LT)
 T = 268.957 m
 R = 3,687.000 m
 L = 536.962 m
 E = 9.797 m
 PC Sta. 7+423.441
 PT Sta. 7+960.403

CURVE 5
 PI Sta. 8+239.297
 N 445735.722
 E 755031.543
 $\Delta = 8^\circ 22' 34''$ (RT)
 T = 85.234 m
 R = 1,164.000 m
 L = 170.164 m
 E = 3.116 m
 PC Sta. 8+154.063
 PT Sta. 8+324.227

CURVE 6
 PI Sta. 8+760.349
 N 445913.882
 E 755031.543
 $\Delta = 10^\circ 13' 46''$ (LT)
 T = 105.350 m
 R = 1,177.000 m
 L = 210.140 m
 E = 4.705 m
 PC Sta. 8+655.000
 PT Sta. 8+865.139

CURVE 7
 PI Sta. 9+463.681
 N 446268.075
 E 755639.828
 $\Delta = 16^\circ 37' 47''$ (LT)
 T = 120.573 m
 R = 825.000 m
 L = 239.451 m
 E = 8.764 m
 PC Sta. 9+343.108
 PT Sta. 9+582.559

REVISIONS	
NAME	DATE
LCE	1/4/10

ILLINOIS DEPARTMENT OF TRANSPORTATION
 ILLINOIS ROUTE 8 - SEGMENT 2
 ALIGNMENT, TIES AND BENCHMARKS
 STATION 7+663 TO 9+400

SCALE: 1:2500
 DATE: DECEMBER, 2003

DRAWN BY: RDT
 CHECKED BY: SAE