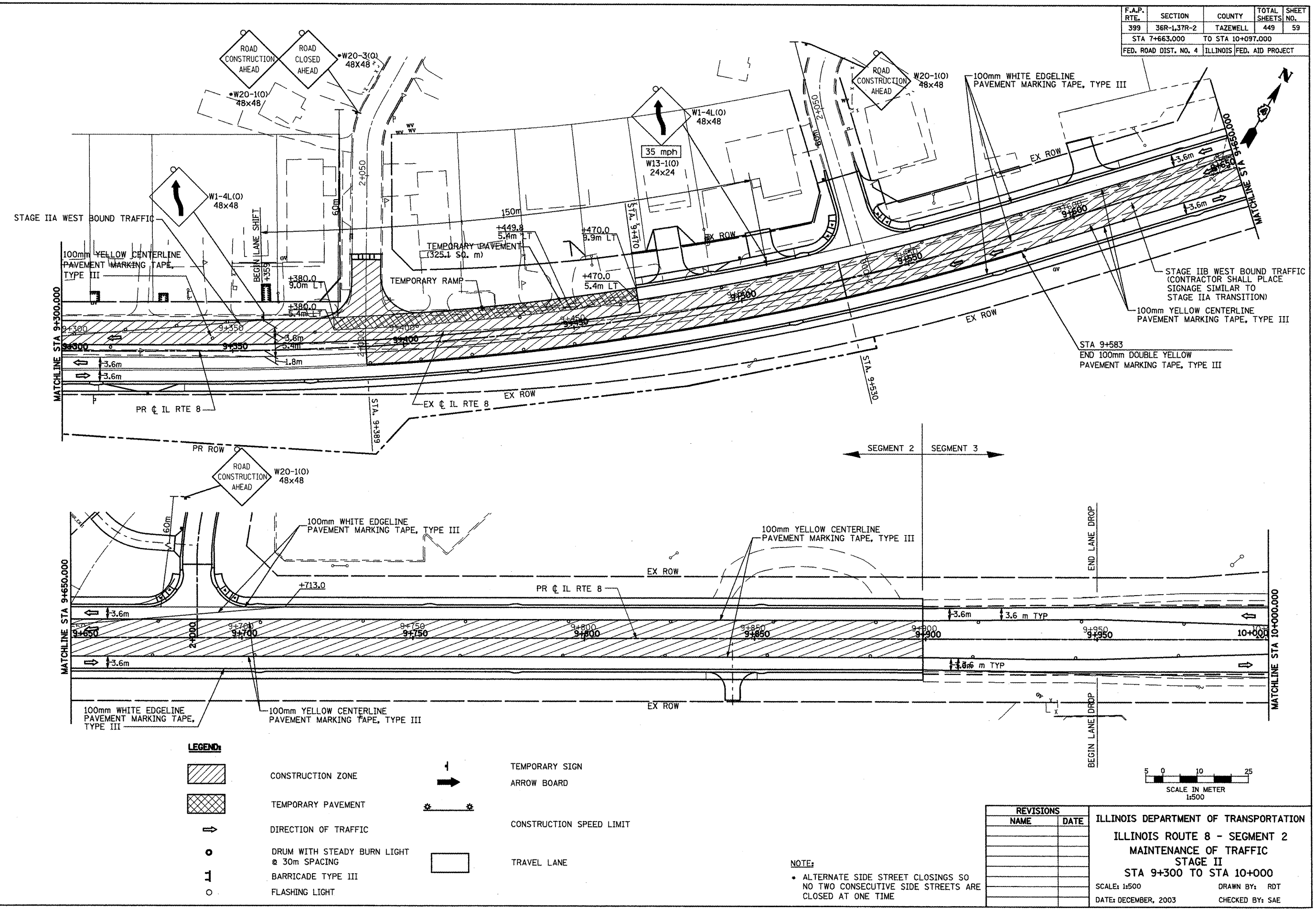






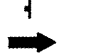




F.A.P. RTE.	SECTION	COUNTY	TOTAL SHEETS	SHEET NO.
399	36R-1,37R-2	TAZEWELL	449	59
STA 7+663.000		TO STA 10+097.000		
FED. ROAD DIST. NO. 4		ILLINOIS FED. AID PROJECT		



LEGEND:

-  CONSTRUCTION ZONE
-  TEMPORARY PAVEMENT
-  DIRECTION OF TRAFFIC
-  DRUM WITH STEADY BURN LIGHT @ 30m SPACING
-  BARRICADE TYPE III
-  FLASHING LIGHT
-  TEMPORARY SIGN ARROW BOARD
-  CONSTRUCTION SPEED LIMIT
-  TRAVEL LANE

REVISIONS	
NAME	DATE

ILLINOIS DEPARTMENT OF TRANSPORTATION
 ILLINOIS ROUTE 8 - SEGMENT 2
 MAINTENANCE OF TRAFFIC
 STAGE II
 STA 9+300 TO STA 10+000
 SCALE: 1:500
 DATE: DECEMBER, 2003
 DRAWN BY: RDT
 CHECKED BY: SAE

NOTE:
 • ALTERNATE SIDE STREET CLOSINGS SO NO TWO CONSECUTIVE SIDE STREETS ARE CLOSED AT ONE TIME

***NOTE: LOCATION OF EXISTING UTILITIES ARE APPROXIMATE.