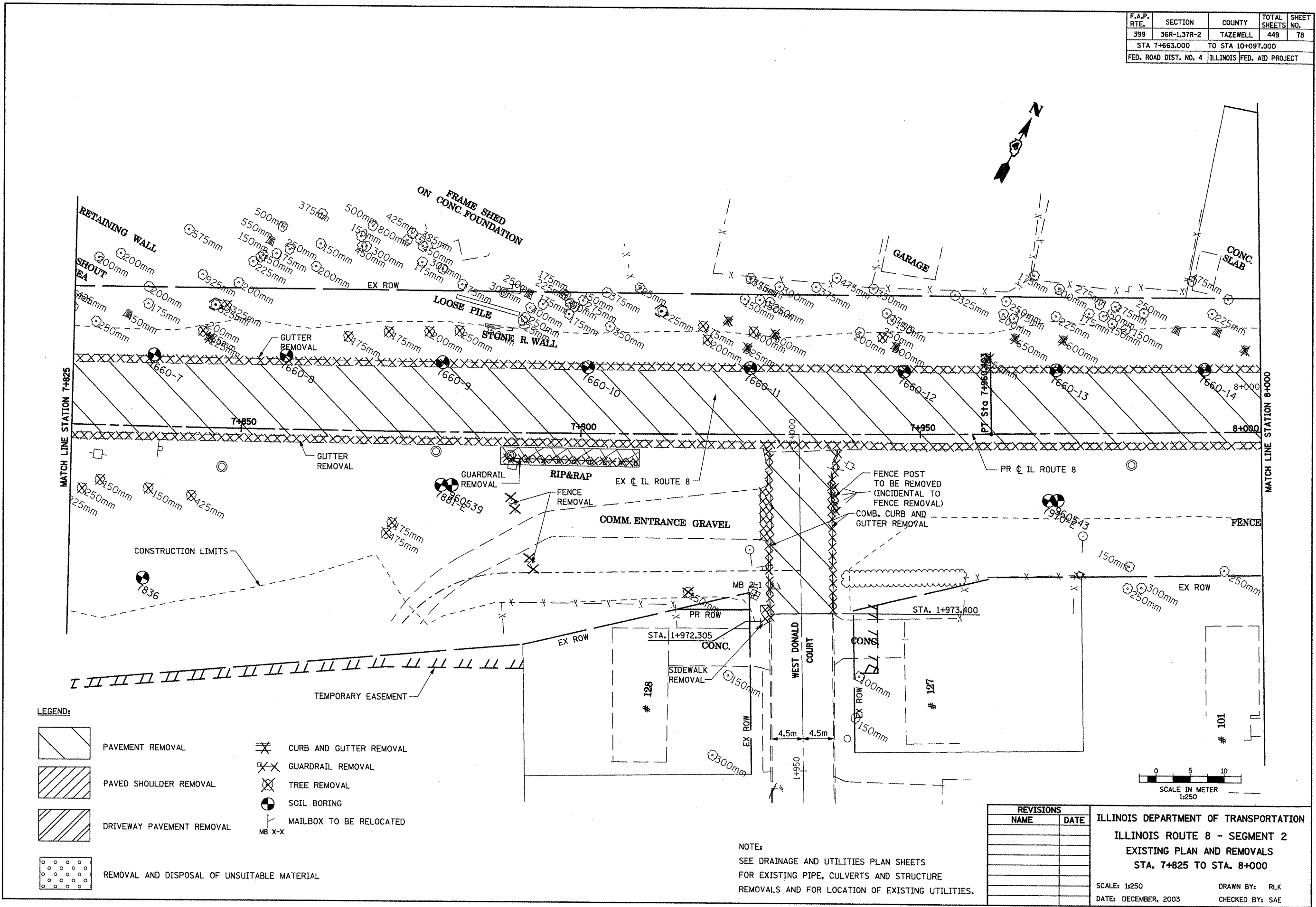


F.A.P. RTE.	SECTION	COUNTY	TOTAL SHEETS	SHEET NO.
399	36R-1,37R-2	TAZEWELL	449	78
STA 7+663.000		TO STA 10+097.000		
FED. ROAD DIST. NO. 4		ILLINOIS FED. AID PROJECT		



LEGEND:

	PAVEMENT REMOVAL		CURB AND GUTTER REMOVAL
	PAVED SHOULDER REMOVAL		GUARDRAIL REMOVAL
	DRIVEWAY PAVEMENT REMOVAL		TREE REMOVAL
	REMOVAL AND DISPOSAL OF UNSUITABLE MATERIAL		SOIL BORING
			MAILBOX TO BE RELOCATED

NOTE:
SEE DRAINAGE AND UTILITIES PLAN SHEETS FOR EXISTING PIPE, CULVERTS AND STRUCTURE REMOVALS AND FOR LOCATION OF EXISTING UTILITIES.

REVISIONS	
NAME	DATE

ILLINOIS DEPARTMENT OF TRANSPORTATION
ILLINOIS ROUTE 8 - SEGMENT 2
EXISTING PLAN AND REMOVALS
STA. 7+825 TO STA. 8+000

SCALE: 1:250
DATE: DECEMBER, 2003

DRAWN BY: RLK
CHECKED BY: SAE

