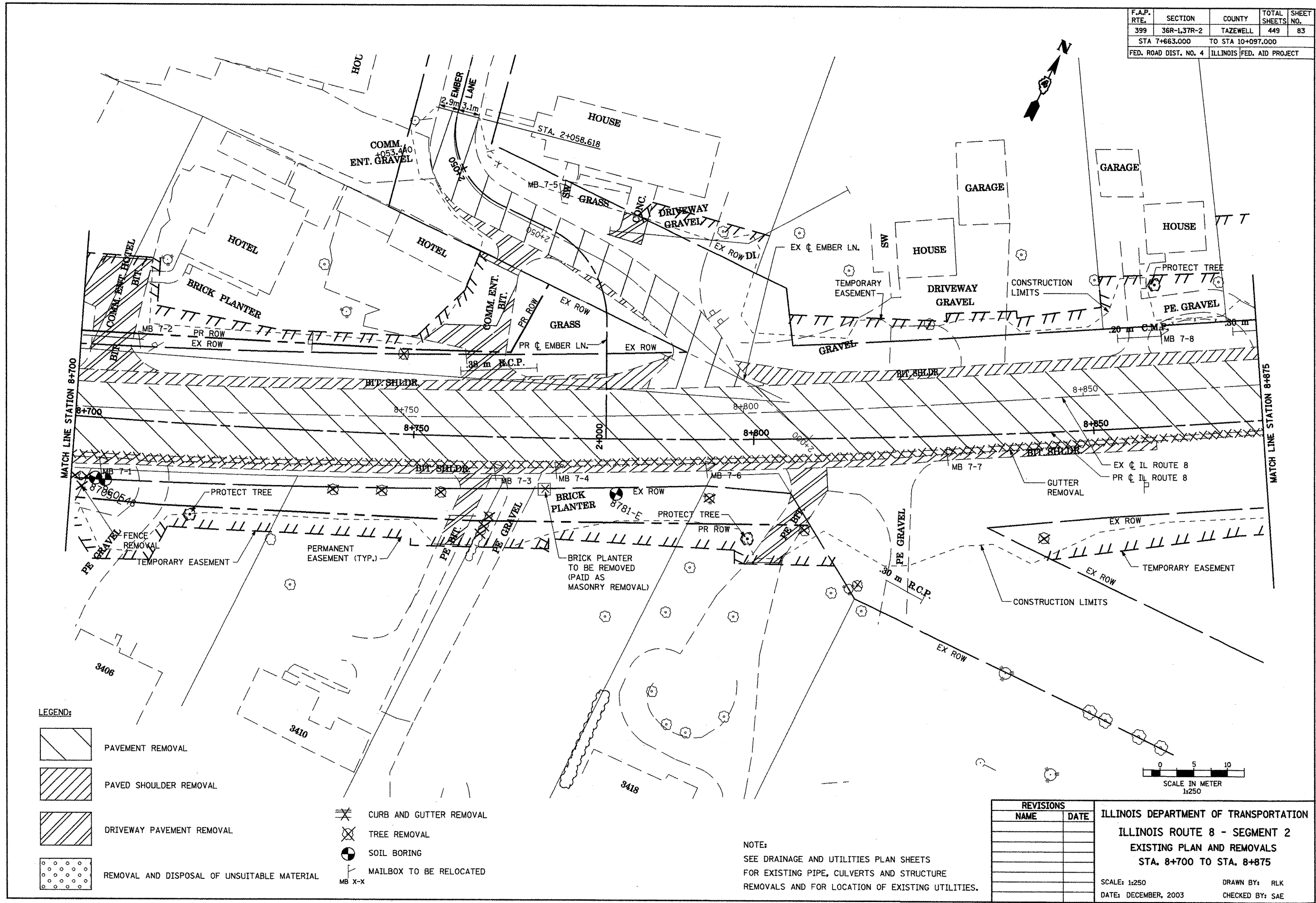
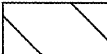
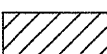
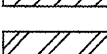
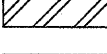
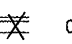
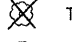

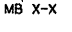


F.A.P. RTE.	SECTION	COUNTY	TOTAL SHEETS	SHEET NO.
399	36R-1,37R-2	TAZEWELL	449	83
STA 7+663.000		TO STA 10+097.000		
FED. ROAD DIST. NO. 4		ILLINOIS FED. AID PROJECT		



LEGEND:

-  PAVEMENT REMOVAL
-  PAVED SHOULDER REMOVAL
-  DRIVEWAY PAVEMENT REMOVAL
-  REMOVAL AND DISPOSAL OF UNSUITABLE MATERIAL
-  CURB AND GUTTER REMOVAL
-  TREE REMOVAL
-  SOIL BORING
-  MAILBOX TO BE RELOCATED

NOTE:
SEE DRAINAGE AND UTILITIES PLAN SHEETS FOR EXISTING PIPE, CULVERTS AND STRUCTURE REMOVALS AND FOR LOCATION OF EXISTING UTILITIES.

REVISIONS	
NAME	DATE

ILLINOIS DEPARTMENT OF TRANSPORTATION
ILLINOIS ROUTE 8 - SEGMENT 2
EXISTING PLAN AND REMOVALS
STA. 8+700 TO STA. 8+875

SCALE: 1:250
DATE: DECEMBER, 2003

DRAWN BY: RLK
CHECKED BY: SAE

