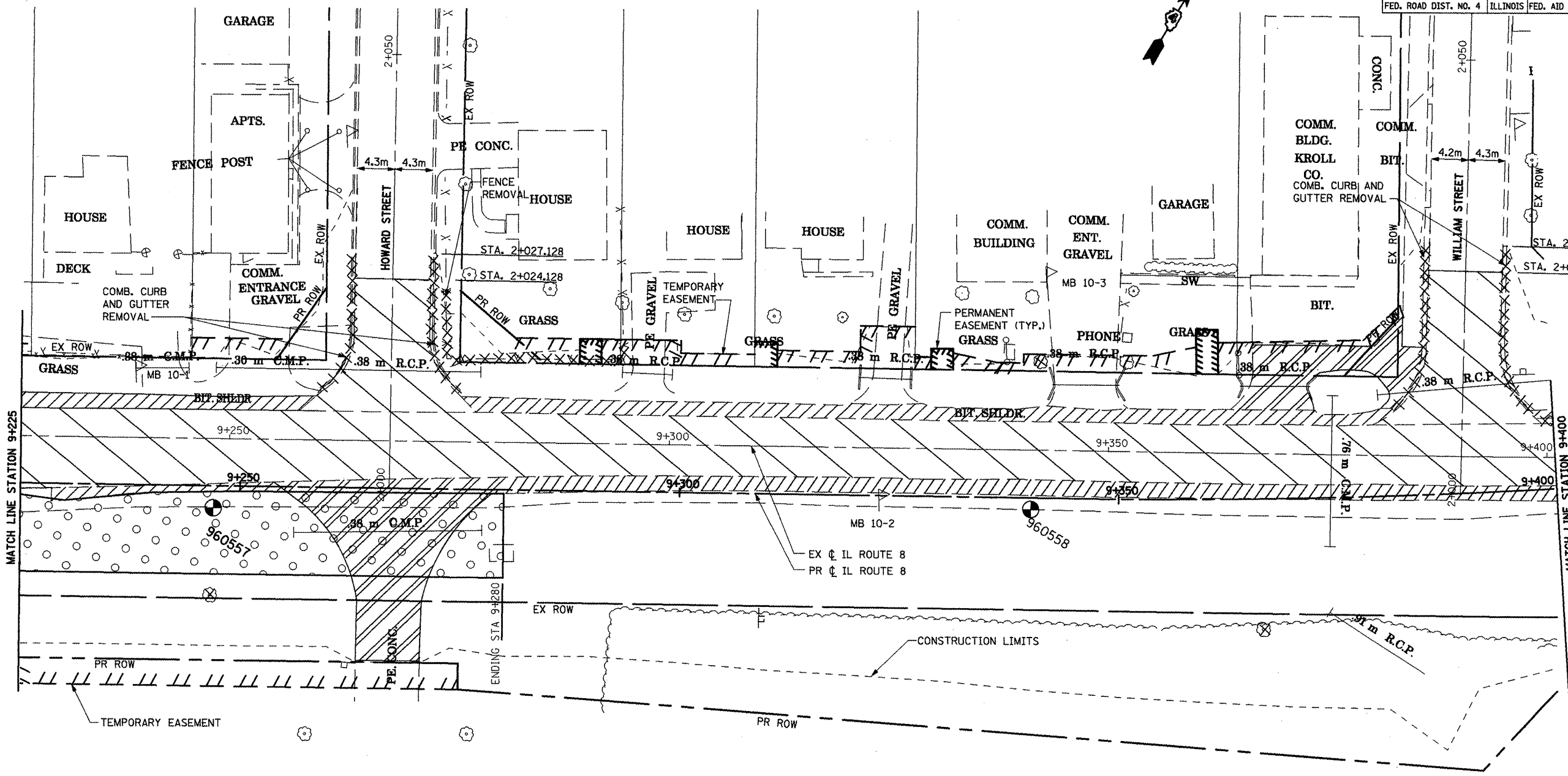
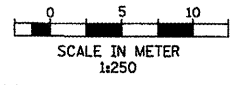


F.A.P. RTE.	SECTION	COUNTY	TOTAL SHEETS	SHEET NO.
399	36R-1,37R-2	TAZEWELL	449	86
STA 7+663.000		TO STA 10+097.000		
FED. ROAD DIST. NO. 4		ILLINOIS FED. AID PROJECT		



LEGEND:

- PAVEMENT REMOVAL
- CURB AND GUTTER REMOVAL
- PAVED SHOULDER REMOVAL
- TREE REMOVAL
- DRIVEWAY PAVEMENT REMOVAL
- SOIL BORING
- MB X-X MAILBOX TO BE RELOCATED
- REMOVAL AND DISPOSAL OF UNSUITABLE MATERIAL



REVISIONS	
NAME	DATE
LCE	3-2-10

ILLINOIS DEPARTMENT OF TRANSPORTATION
 ILLINOIS ROUTE 8 - SEGMENT 2
 EXISTING PLAN AND REMOVALS
 STA. 9+225 TO STA. 9+400

SCALE: 1:250
 DATE: DECEMBER, 2003

DRAWN BY: RLK
 CHECKED BY: SAE

NOTE:
 SEE DRAINAGE AND UTILITIES PLAN SHEETS
 FOR EXISTING PIPE, CULVERTS AND STRUCTURE
 REMOVALS AND FOR LOCATION OF EXISTING UTILITIES.