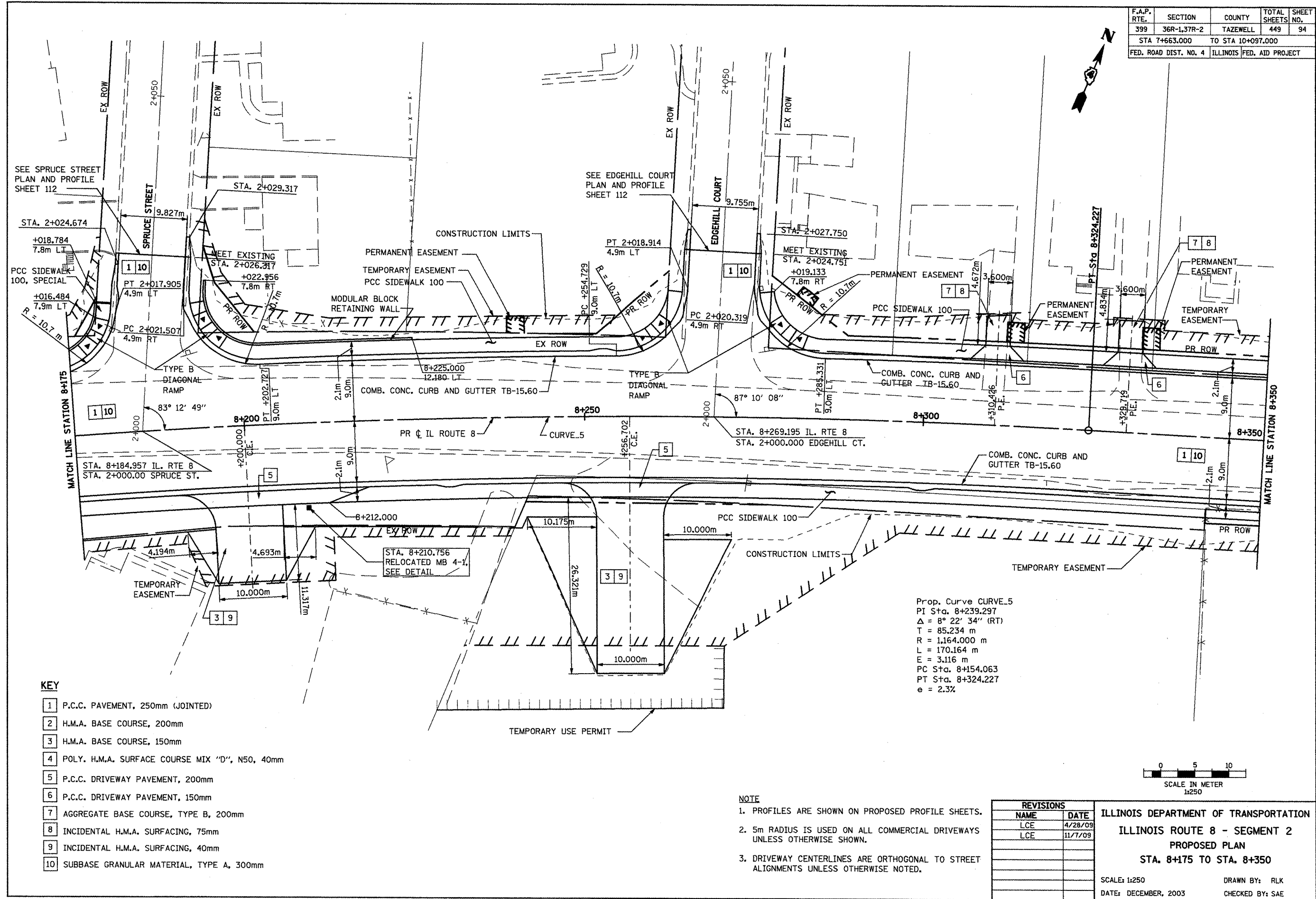


F.A.P. RTE.	SECTION	COUNTY	TOTAL SHEETS	SHEET NO.
399	36R-L37R-2	TAZEWELL	449	94
STA 7+663.000		TO STA 10+097.000		
FED. ROAD DIST. NO. 4		ILLINOIS FED. AID PROJECT		



- KEY**
- 1 P.C.C. PAVEMENT, 250mm (JOINTED)
  - 2 H.M.A. BASE COURSE, 200mm
  - 3 H.M.A. BASE COURSE, 150mm
  - 4 POLY. H.M.A. SURFACE COURSE MIX "D", N50, 40mm
  - 5 P.C.C. DRIVEWAY PAVEMENT, 200mm
  - 6 P.C.C. DRIVEWAY PAVEMENT, 150mm
  - 7 AGGREGATE BASE COURSE, TYPE B, 200mm
  - 8 INCIDENTAL H.M.A. SURFACING, 75mm
  - 9 INCIDENTAL H.M.A. SURFACING, 40mm
  - 10 SUBBASE GRANULAR MATERIAL, TYPE A, 300mm

Prop. Curve CURVE\_5  
 PI Sta. 8+239.297  
 $\Delta = 8^\circ 22' 34''$  (RT)  
 T = 85.234 m  
 R = 1,164.000 m  
 L = 170.164 m  
 E = 3.116 m  
 PC Sta. 8+154.063  
 PT Sta. 8+324.227  
 e = 2.3%

- NOTE**
1. PROFILES ARE SHOWN ON PROPOSED PROFILE SHEETS.
  2. 5m RADIUS IS USED ON ALL COMMERCIAL DRIVEWAYS UNLESS OTHERWISE SHOWN.
  3. DRIVEWAY CENTERLINES ARE ORTHOGONAL TO STREET ALIGNMENTS UNLESS OTHERWISE NOTED.

REVISIONS	
NAME	DATE
LCE	4/28/09
LCE	11/7/09

ILLINOIS DEPARTMENT OF TRANSPORTATION  
 ILLINOIS ROUTE 8 - SEGMENT 2  
 PROPOSED PLAN  
 STA. 8+175 TO STA. 8+350

SCALE: 1:250  
 DATE: DECEMBER, 2003

DRAWN BY: RLK  
 CHECKED BY: SAE

