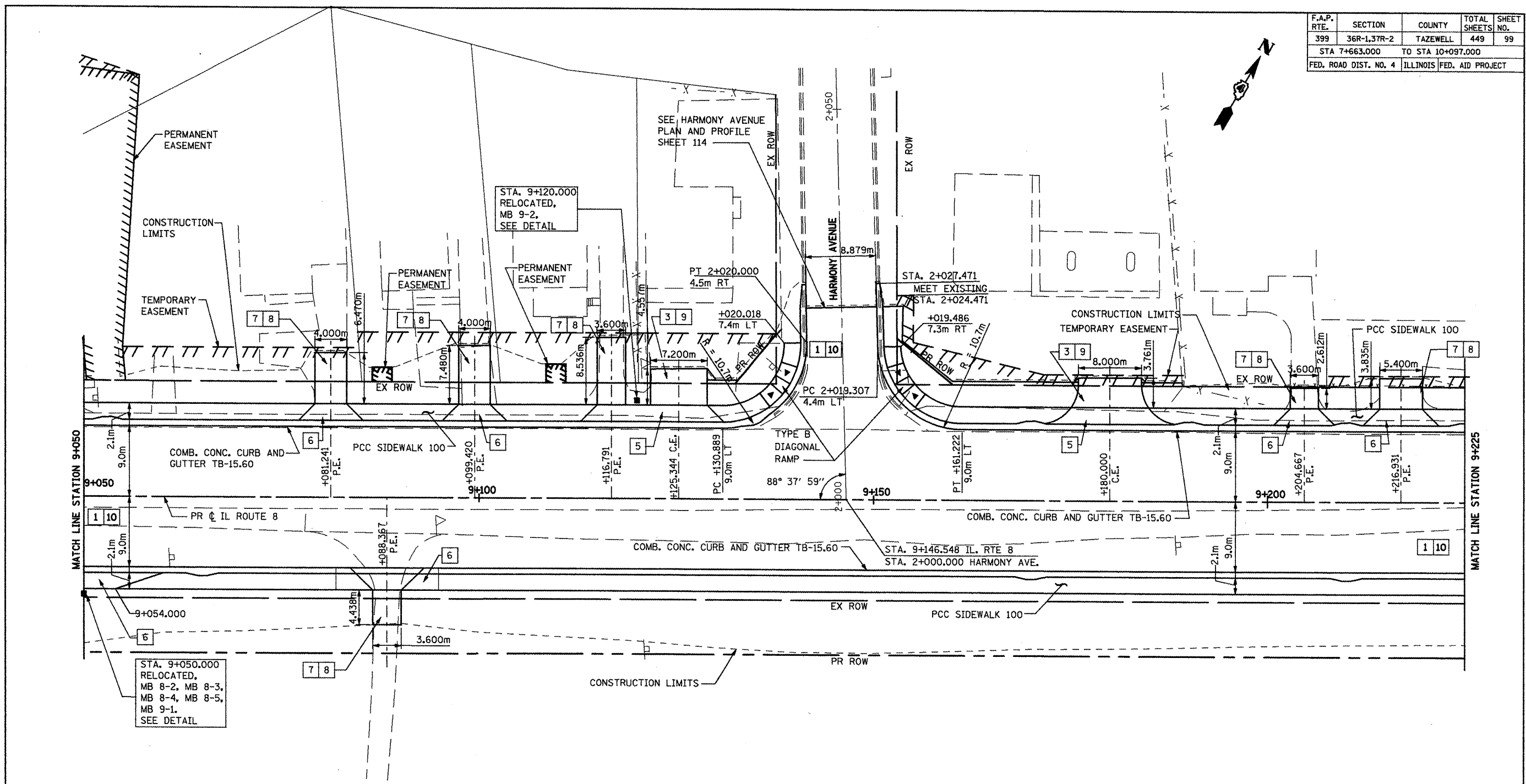
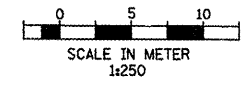


F.A.P. RTE.	SECTION	COUNTY	TOTAL SHEETS	SHEET NO.
399	36R-1,37R-2	TAZEWELL	449	99
STA 7+663.000		TO STA 10+097.000		
FED. ROAD DIST. NO. 4		ILLINOIS FED. AID PROJECT		



- KEY**
- 1 P.C.C. PAVEMENT, 250mm (JOINTED)
 - 2 H.M.A. BASE COURSE, 200mm
 - 3 H.M.A. BASE COURSE, 150mm
 - 4 POLY. H.M.A. SURFACE COURSE MIX "D", N50, 40mm
 - 5 P.C.C. DRIVEWAY PAVEMENT, 200mm
 - 6 P.C.C. DRIVEWAY PAVEMENT, 150mm
 - 7 AGGREGATE BASE COURSE, TYPE B, 200mm
 - 8 INCIDENTAL H.M.A. SURFACING, 75mm
 - 9 INCIDENTAL H.M.A. SURFACING, 40mm
 - 10 SUBBASE GRANULAR MATERIAL, TYPE A, 300mm



- NOTE**
- PROFILES ARE SHOWN ON PROPOSED PROFILE SHEETS.
 - 5m RADIUS IS USED ON ALL COMMERCIAL DRIVEWAYS UNLESS OTHERWISE SHOWN.
 - DRIVEWAY CENTERLINES ARE ORTHOGONAL TO STREET ALIGNMENTS UNLESS OTHERWISE NOTED.

REVISIONS	
NAME	DATE
LCE	3/18/10

ILLINOIS DEPARTMENT OF TRANSPORTATION
 ILLINOIS ROUTE 8 - SEGMENT 2
 PROPOSED PLAN
 STA. 9+050 TO STA. 9+225

SCALE: 1:250 DRAWN BY: RLK
 DATE: DECEMBER, 2003 CHECKED BY: SAE