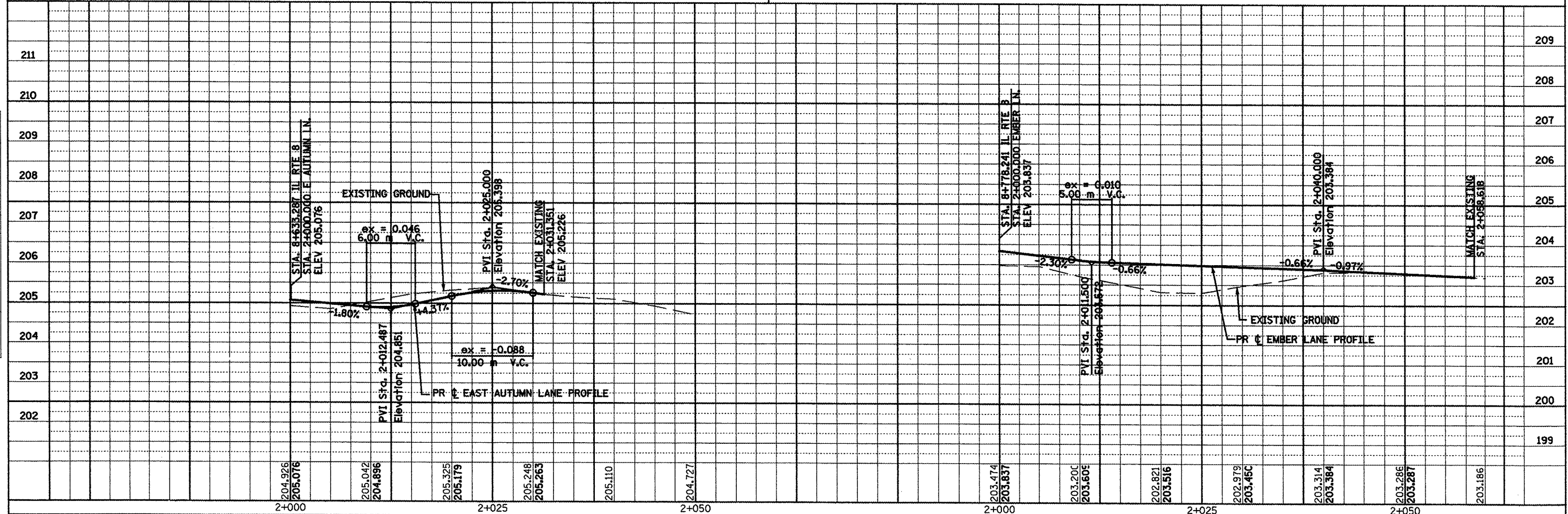
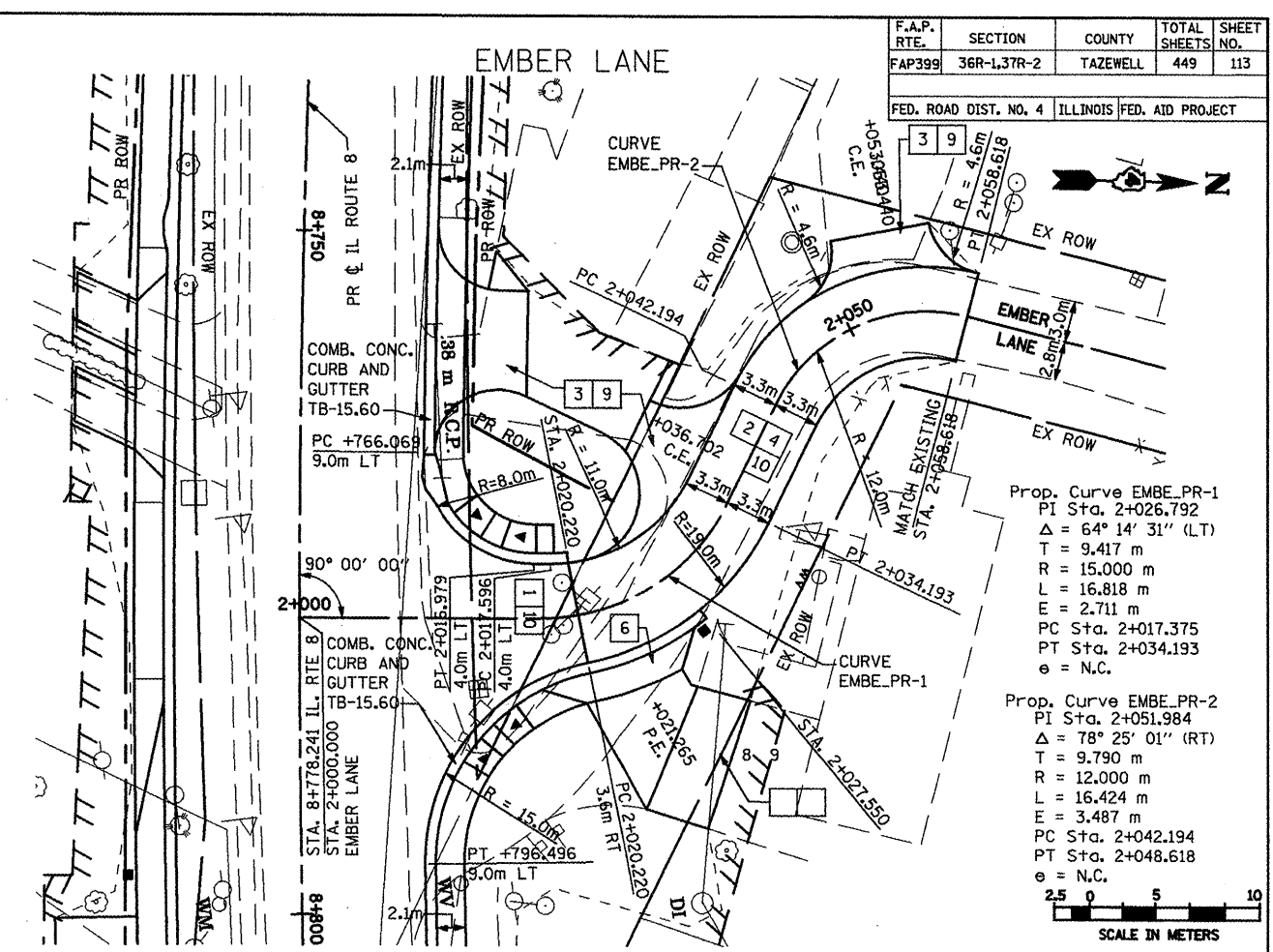
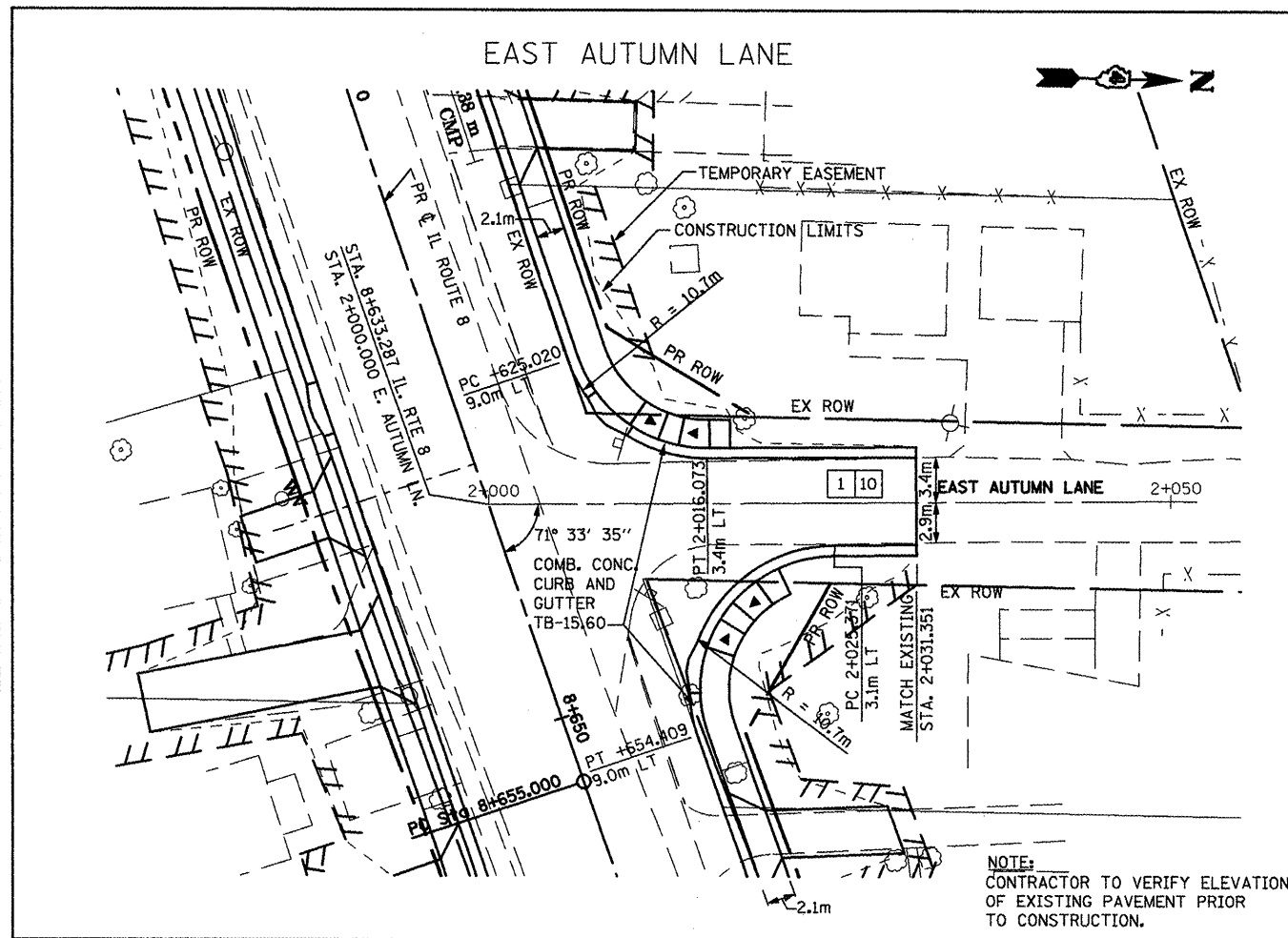


F.A.P. RTE.	SECTION	COUNTY	TOTAL SHEETS	SHEET NO.
FAP399	36R-1.37R-2	TAZEWELL	449	113

FED. ROAD DIST. NO. 4 ILLINOIS FED. AID PROJECT



PROPOSED PLAN AND PROFILE - EAST AUTUMN LANE/EMBER LANE

NO.	DATE	BY

FINAL SURVEY PLOTTED
NOTE BOOK TEMPLATE AREAS CHECKED

NO.	DATE	BY

ORIGINAL SURVEY PLOTTED
NOTE BOOK TEMPLATE AREAS CHECKED