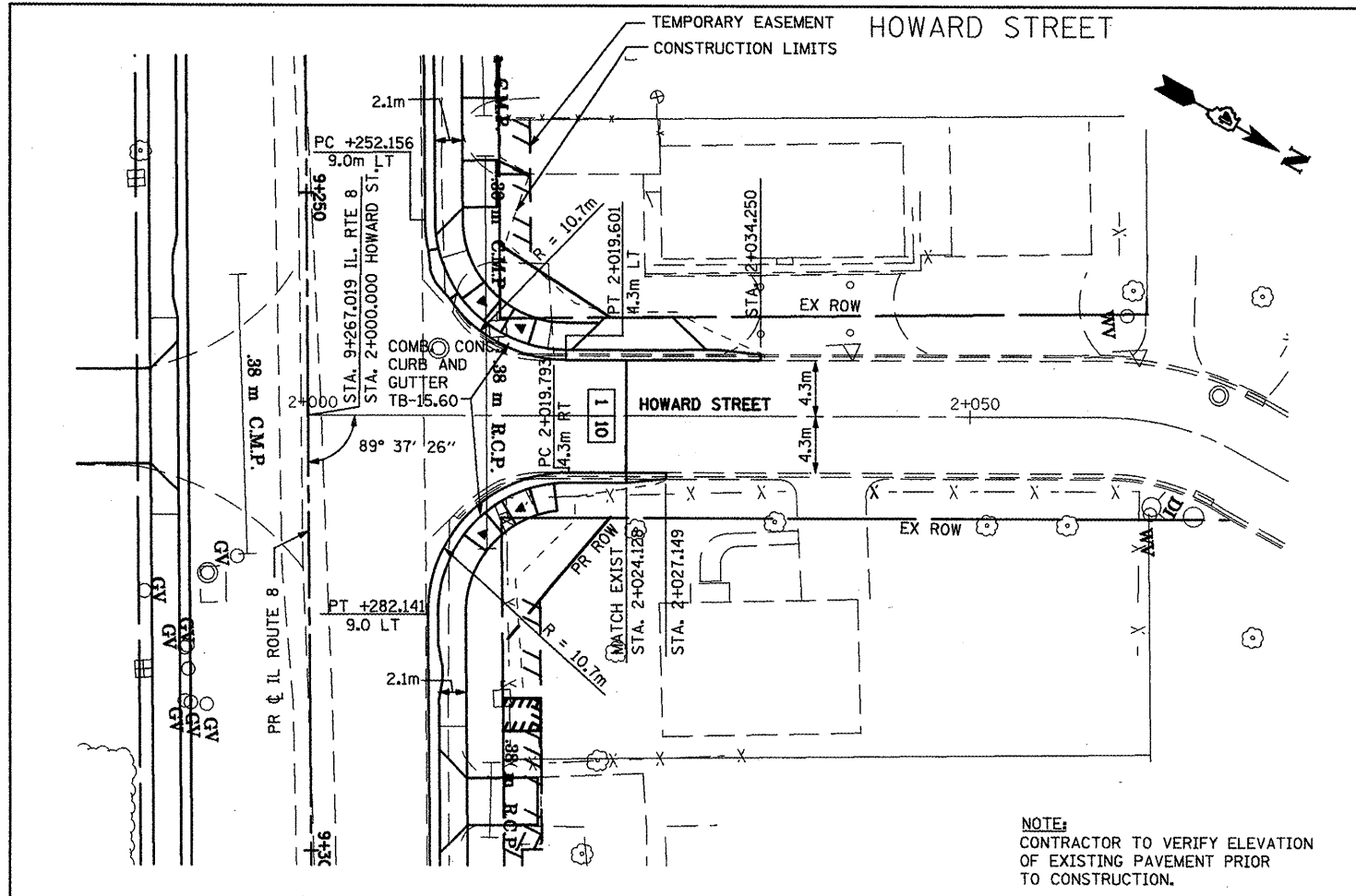
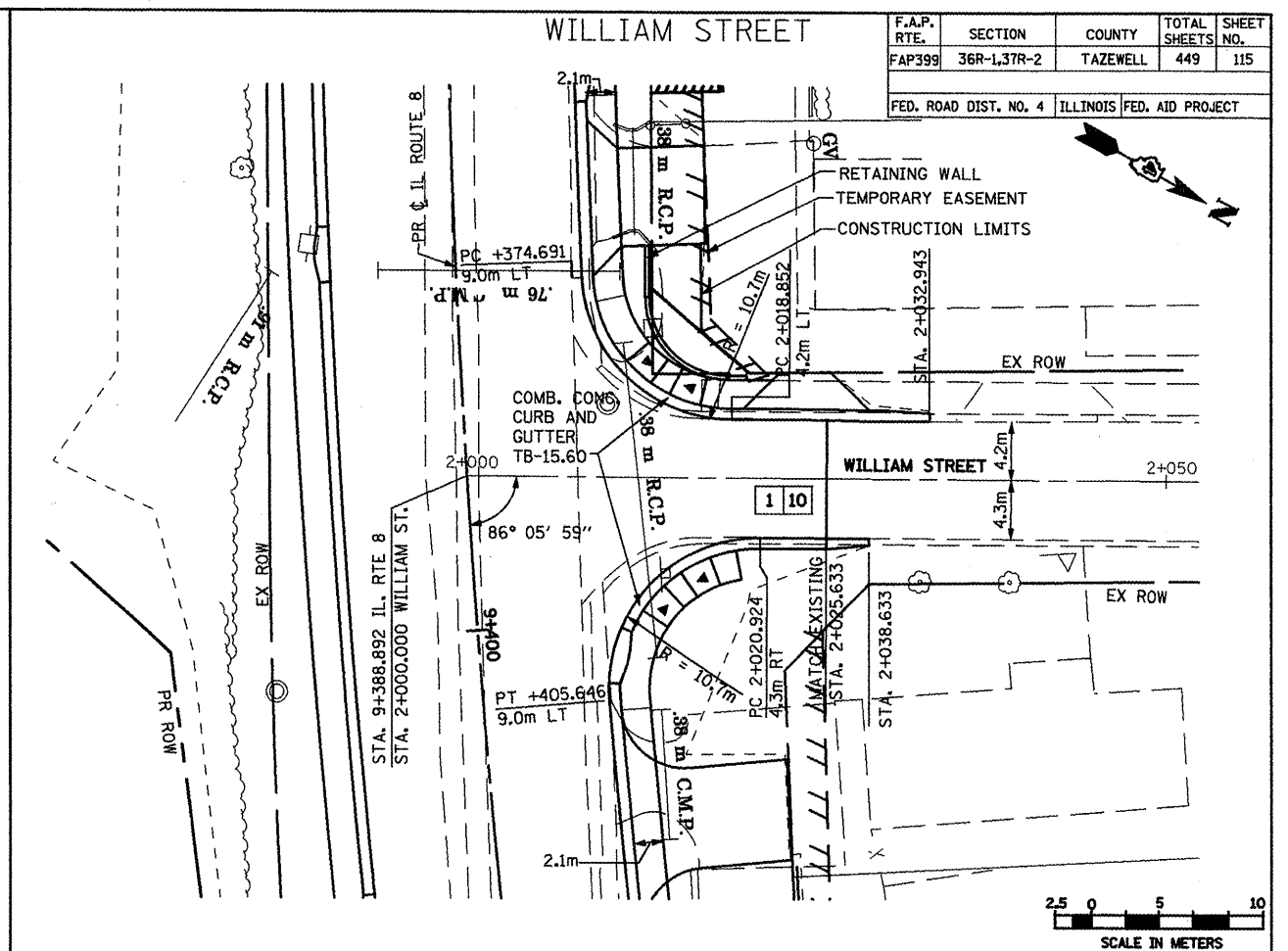


BY	DATE

BY	DATE

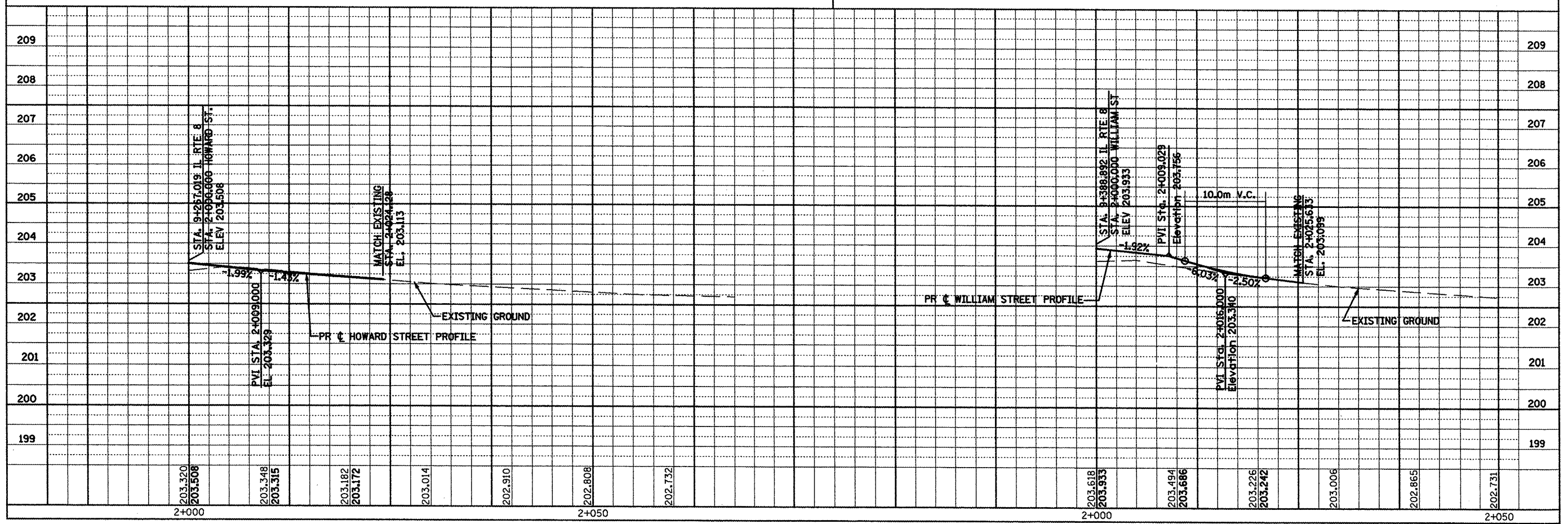
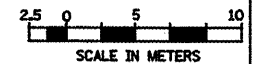


NOTE:
CONTRACTOR TO VERIFY ELEVATION
OF EXISTING PAVEMENT PRIOR
TO CONSTRUCTION.



F.A.P. RTE.	SECTION	COUNTY	TOTAL SHEETS NO.	SHEET NO.
FAP399	36R-1,37R-2	TAZEWELL	449	115

FED. ROAD DIST. NO. 4 ILLINOIS FED. AID PROJECT



PROPOSED PLAN AND PROFILE - HOWARD STREET/WILLIAM STREET