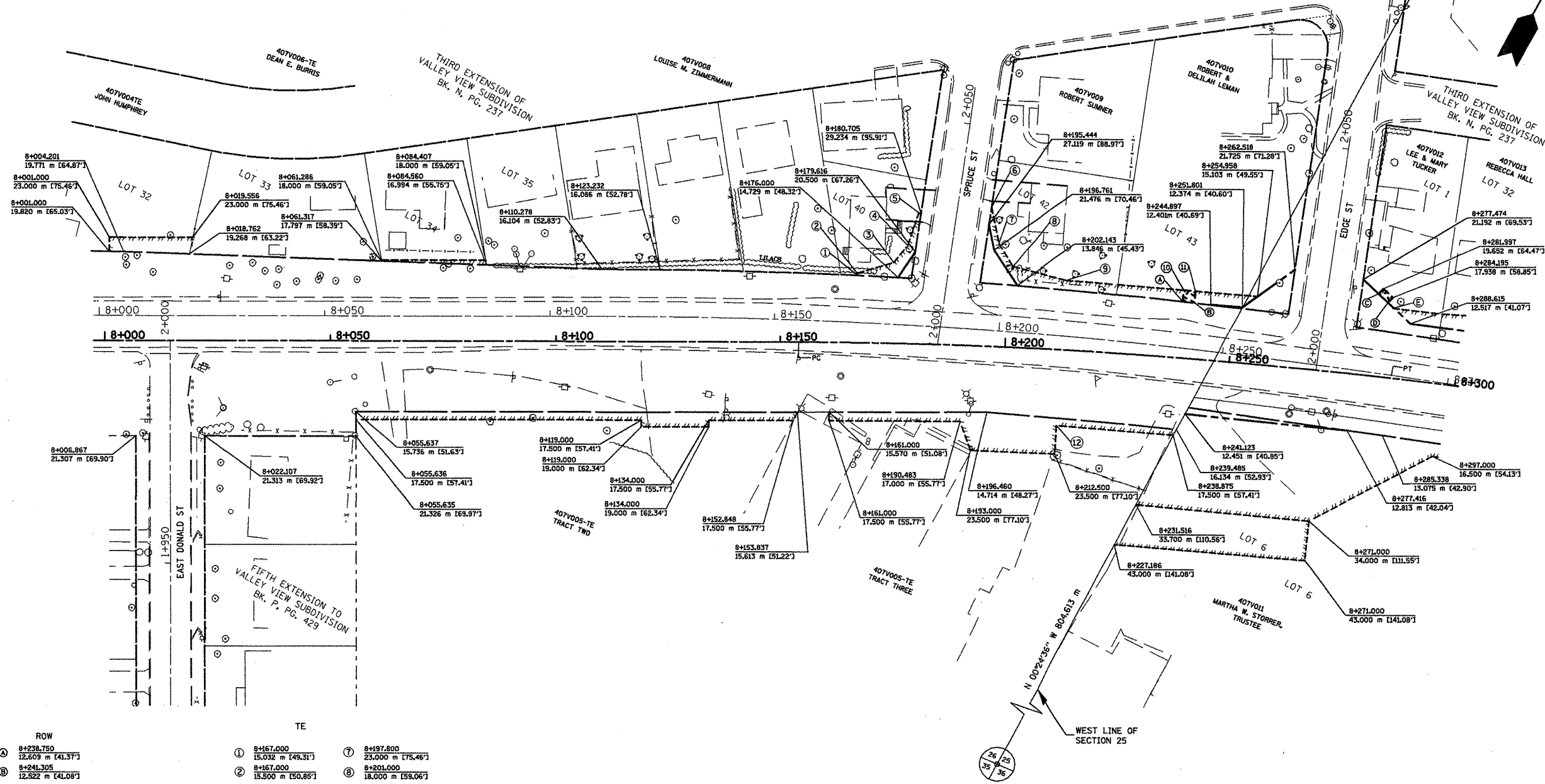


F.A.P. RTE.	SECTION	COUNTY	TOTAL SHEETS	SHEET NO.
399	36R-1, (37R-2)	TAZEWELL	449	192
STA 7+663.000		TO STA 10+097.000		
FED. ROAD DIST. NO. 4		ILLINOIS FED. AID PROJECT		

EXISTING CENTERLINE	-----
PROPOSED CENTERLINE	-----
EXISTING RIGHT OF WAY LINE	-----
PROPOSED RIGHT OF WAY LINE	-----
PERMANENT EASEMENT LINE	-----
TEMPORARY EASEMENT LINE	-----

FAP 399 (IL8) C3
 PI STA = 8+202.527
 $\Delta = 8^{\circ} 22' 33''$ (RT)
 R = 1,164.131 m
 T = 85.240 m
 L = 170.177 m
 E = 3.117 m
 P.C. STA = 8+117.287
 P.T. STA = 8+287.464



ROW		TE	
Ⓐ	8+238.750 12.609 m [41.37']	①	8+167.000 15.032 m [49.31']
Ⓑ	8+241.305 12.522 m [41.08']	②	8+167.000 15.500 m [50.85']
Ⓒ	8+281.042 18.388 m [60.33']	③	8+175.000 18.000 m [59.05']
Ⓓ	8+283.239 16.875 m [54.70']	④	8+177.977 21.912 m [71.89']
Ⓔ	8+284.373 15.500 m [50.85']	⑤	8+180.201 28.300 m [93.01']
		⑥	8+195.887 31.105 m [102.05']
		⑦	8+197.800 23.000 m [75.46']
		⑧	8+201.000 18.000 m [59.06']
		⑨	8+213.001 15.500 m [50.85']
		⑩	8+238.780 15.116 m [49.59']
		⑪	8+241.287 15.089 m [49.50']
		⑫	8+212.500 17.000 m [55.77']

REVISIONS	
NAME	DATE
LCE	1-13-10

ILLINOIS DEPARTMENT OF TRANSPORTATION
 ILLINOIS ROUTE 8 - SEGMENT 2
 PERMANENT EASEMENT, TEMPORARY EASEMENTS, RIGHT-OF-WAY
 STA. 8+000 TO STA. 8+300
 SCALE: 1:500
 DATE: OCTOBER, 2009
 DRAWN BY: MLA
 CHECKED BY: PCF

FOR OLD R.O.W. SEE
 PLAN 4 SHEETS 10 & 13
 Plot# 533