

F.A.P. RTE.	SECTION	COUNTY	TOTAL SHEETS	SHEET NO.
399	36R-1, (37R-2)	TAZEWELL	449	196
STA 7+663.000		TO STA 10+097.000		
FED. ROAD DIST. NO. 4 ILLINOIS FED. AID PROJECT				

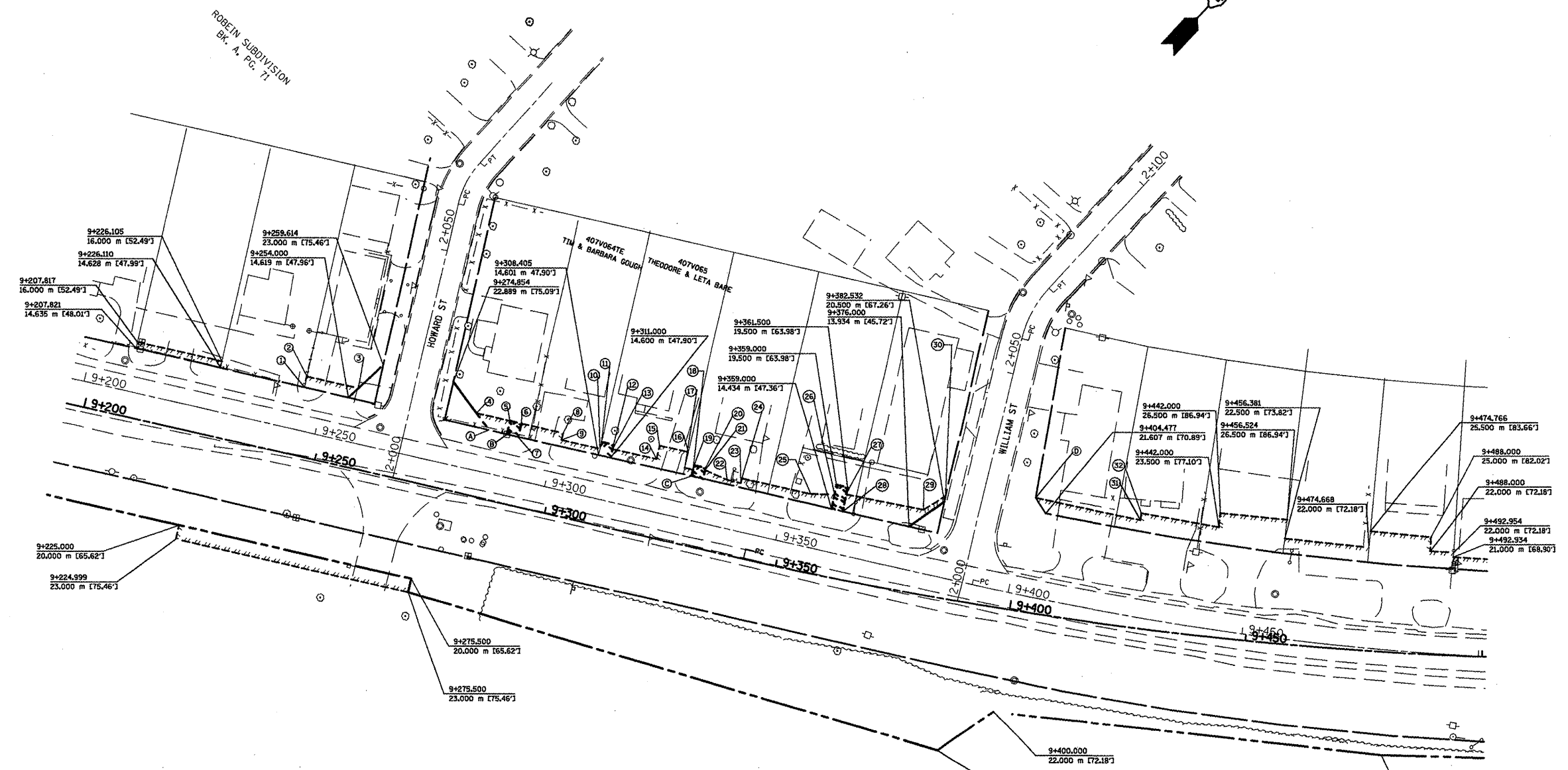
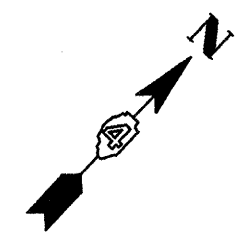
EXISTING CENTERLINE	---
PROPOSED CENTERLINE	---
EXISTING RIGHT OF WAY LINE	---
PROPOSED RIGHT OF WAY LINE	---
PERMANENT EASEMENT LINE	---
TEMPORARY EASEMENT LINE	---

FAP 399 (IL8) C7
 PI STA = 9+483.364
 $\Delta = 16^\circ 36' 20''$ (LT)
 R = 623.706 m
 T = 91.020 m
 L = 180.765 m
 E = 6.607 m
 P.C. STA = 9+392.343
 P.T. STA = 9+573.108

FAP 399 (IL8) C8
 PI STA = 9+463.681
 $\Delta = 16^\circ 37' 47''$ (LT)
 R = 824.998 m
 T = 120.573 m
 L = 239.451 m
 E = 8.764 m
 P.C. STA = 9+343.108
 P.T. STA = 9+582.559

HOWARD C1
 PI STA = 2+065.452
 $\Delta = 28^\circ 52' 48''$ (RT)
 R = 20.001 m
 T = 5.150 m
 L = 10.081 m
 E = 0.652 m
 P.C. STA = 2+060.302
 P.T. STA = 2+070.383

WILLIAM C1
 PI STA = 2+064.075
 $\Delta = 28^\circ 33' 20''$ (RT)
 R = 24.999 m
 T = 6.362 m
 L = 12.459 m
 E = 0.797 m
 P.C. STA = 2+057.713
 P.T. STA = 2+070.173



ROW	TE/PE
① 9+284.474 14.509 m [47.93']	① 9+244.397 14.522 m [47.97']
② 9+288.500 14.608 m [47.93']	② 9+244.381 17.000 m [55.77']
③ 9+328.500 14.594 m [47.88']	③ 9+255.595 17.000 m [55.77']
④ 9+401.885 24.500 m [80.38']	④ 9+281.115 17.500 m [57.41']
	⑤ 9+286.500 17.500 m [57.41']
	⑥ 9+291.000 17.500 m [57.41']
	⑦ 9+291.000 14.607 m [47.92']
	⑧ 9+300.000 17.500 m [57.41']
	⑨ 9+300.000 16.000 m [52.49']
	⑩ 9+308.401 16.000 m [52.49']
	⑪ 9+308.397 17.500 m [57.41']
	⑫ 9+311.000 17.500 m [57.41']
	⑬ 9+311.000 16.500 m [54.13']
	⑭ 9+320.500 16.500 m [54.13']
	⑮ 9+320.500 19.500 m [63.98']
	⑯ 9+326.679 19.500 m [63.98']
	⑰ 9+325.689 16.000 m [52.49']
	⑱ 9+328.500 17.000 m [55.77']
	⑲ 9+331.000 17.000 m [55.77']
	⑳ 9+331.000 17.000 m [55.77']
	㉑ 9+331.000 16.500 m [54.13']
	㉒ 9+336.000 15.500 m [50.85']
	㉓ 9+339.000 15.500 m [50.85']
	㉔ 9+339.000 16.500 m [54.13']
	㉕ 9+354.000 16.500 m [54.13']
	㉖ 9+358.000 17.500 m [57.41']
	㉗ 9+361.500 18.000 m [59.06']
	㉘ 9+361.500 14.382 m [47.18']
	㉙ 9+378.423 18.016 m [59.11']
	㉚ 9+382.589 21.696 m [71.181']
	㉛ 9+425.000 23.000 m [75.46']
	㉜ 9+425.000 24.500 m [80.38']
	㉝ 9+456.381 22.500 m [73.82']
	㉞ 9+456.524 26.500 m [86.94']
	㉟ 9+474.668 22.000 m [72.18']
	㊱ 9+474.766 25.500 m [83.66']
	㊲ 9+488.000 25.000 m [82.02']
	㊳ 9+488.000 22.000 m [72.18']
	㊴ 9+492.954 22.000 m [72.18']
	㊵ 9+492.934 21.000 m [68.90']

REVISIONS	
NAME	DATE
LCE	1-13-10

ILLINOIS DEPARTMENT OF TRANSPORTATION
 ILLINOIS ROUTE 8 - SEGMENT 2
 PERMANENT EASEMENT, TEMPORARY
 EASEMENTS, RIGHT-OF-WAY
 STA. 9+200 TO STA. 9+500
 SCALE: 1:500
 DATE: OCTOBER, 2009
 DRAWN BY: MLA
 CHECKED BY: PCF

FOR OLD R.O.W. SEE
 PLAN 4 SHEETS 10 Plot#file: 533