

F.A.P. RTE.	SECTION	COUNTY	TOTAL SHEETS	SHEET NO.
399	36R-1, (37R-2)	TAZEWELL	449	197
STA 7+663.000			TO STA 10+097.000	
FED. ROAD DIST. NO. 4			ILLINOIS FED. AID PROJECT	

EXISTING CENTERLINE	---
PROPOSED CENTERLINE	---
EXISTING RIGHT OF WAY LINE	---
PROPOSED RIGHT OF WAY LINE	---
PERMANENT EASEMENT LINE	---
TEMPORARY EASEMENT LINE	---

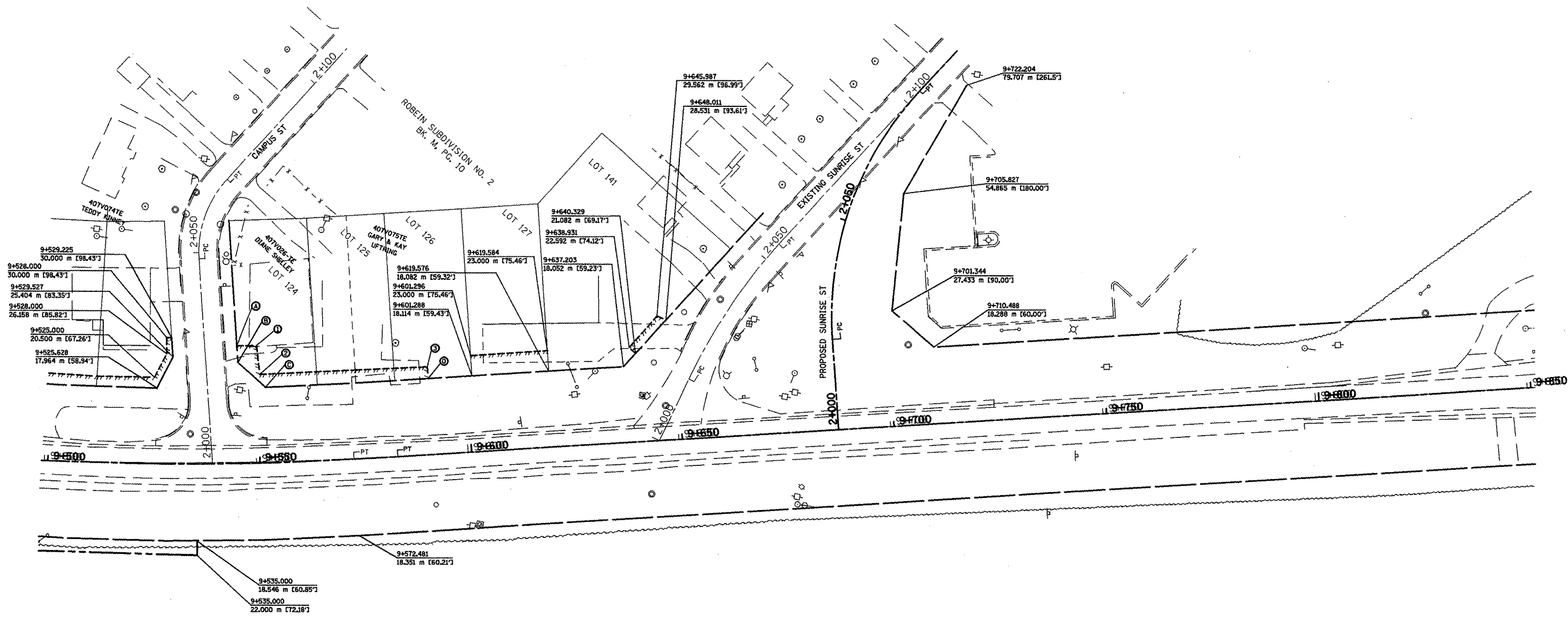
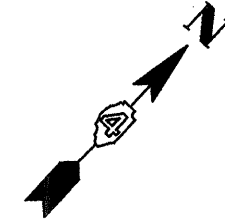
FAP 399 (IL8) C8  
 PI STA = 9+483.364  
 $\Delta = 16^\circ 36' 20''$  (LT)  
 R = 623.706 m  
 T = 91.020 m  
 L = 180.765 m  
 E = 6.607 m  
 P.C. STA = 9+392.343  
 P.T. STA = 9+573.108

FAP 399 (IL8) C9  
 PI STA = 9+463.681  
 $\Delta = 16^\circ 37' 47''$  (LT)  
 R = 824.998 m  
 T = 120.573 m  
 L = 239.451 m  
 E = 8.764 m  
 P.C. STA = 9+343.108  
 P.T. STA = 9+582.559

CAMPUS C1  
 PI STA = 2+059.424  
 $\Delta = 45^\circ 50' 20''$  (RT)  
 R = 25.677 m  
 T = 10.856 m  
 L = 20.542 m  
 E = 2.201 m  
 P.C. STA = 2+048.568  
 P.T. STA = 2+069.110

SUNRISE C1  
 PI STA = 2+035.621  
 $\Delta = 16^\circ 55' 57''$  (RT)  
 R = 130.532 m  
 T = 19.430 m  
 L = 38.576 m  
 E = 1.438 m  
 P.C. STA = 2+016.192  
 P.T. STA = 2+054.768

SUNRISE C2  
 PI STA = 2+055.464  
 $\Delta = 45^\circ 52' 51''$  (RT)  
 R = 80.000 m  
 T = 33.860 m  
 L = 64.062 m  
 E = 6.871 m  
 P.C. STA = 2+021.604  
 P.T. STA = 2+085.666



ROW	TE/PE
① 9+545.156	① 9+549.961
② 27.994 m [89.84']	② 28.000 m [91.86']
③ 9+545.337	③ 9+550.500
④ 24.014 m [78.78']	④ 21.000 m [68.90']
⑤ 9+551.793	⑤ 9+591.000
⑥ 17.935 m [58.84']	⑥ 21.000 m [68.90']
⑦ 9+591.000	
⑧ 18.132 m [59.49']	

REVISIONS	
NAME	DATE
LCE	1-13-10

ILLINOIS DEPARTMENT OF TRANSPORTATION  
 ILLINOIS ROUTE 8 - SEGMENT 2  
 PERMANENT EASEMENT, TEMPORARY  
 EASEMENTS, RIGHT-OF-WAY  
 STA. 9+500 TO STA. 9+850  
 SCALE: 1:500  
 DATE: OCTOBER, 2009  
 DRAWN BY: MLA  
 CHECKED BY: PCF