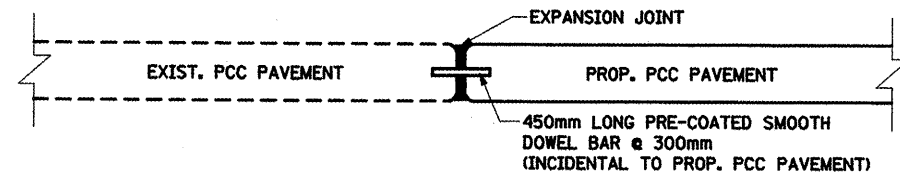
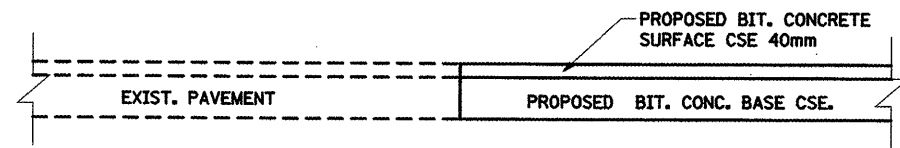


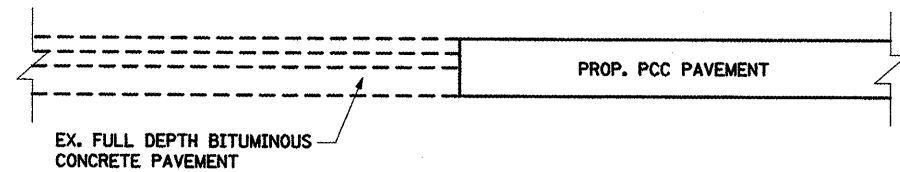
F.A.P. RTE.	SECTION	COUNTY	TOTAL SHEETS	SHEET NO.
399	36R-1.37R-2	TAZEWELL	449	233
STA 7+663,000		TO STA 10+097,000		
FED. ROAD DIST. NO. 4		ILLINOIS FED. AID PROJECT		



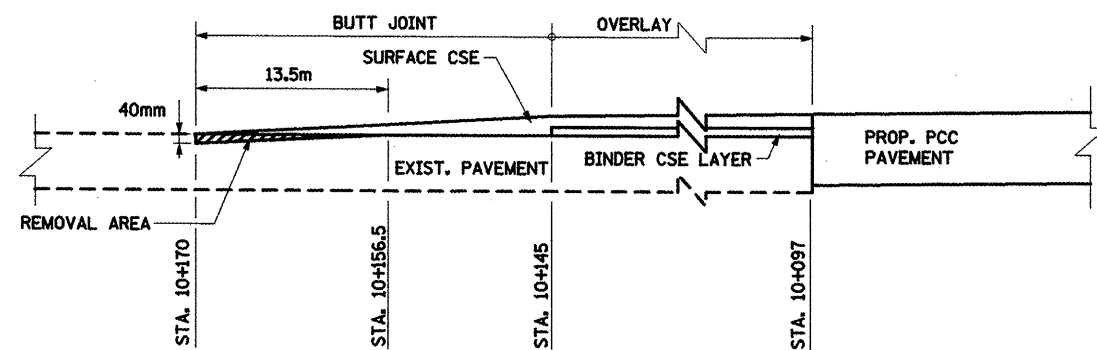
TYPE 1



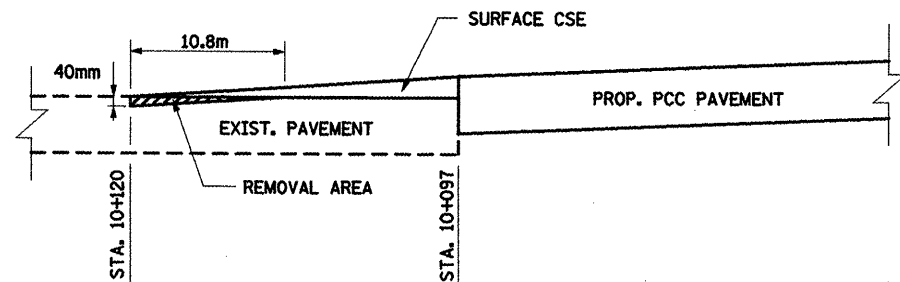
TYPE 2



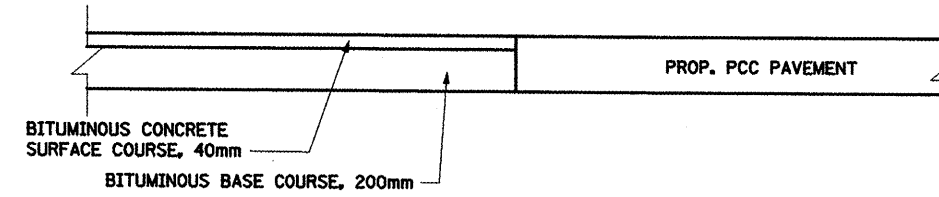
TYPE 3



TYPE 4



TYPE 5



TRANSITION DETAIL

LOCATION	TYPE OF BUTT JOINT	LENGTH (L) (M)
MAINLINE (STA. 7+663)	1	-
MAINLINE (STA. 10+145, WESTBOUND)	4	25
MAINLINE (STA. 10+097, EASTBOUND)	5	23
WEST DONALD COURT	3	-
EAST DOLAND COURT	3	-
SPRUCE STREET	3	-
EDGEHILL COURT	3	-
EAST AUTUMN LANE	3	-
EMBER LANE	2	-
LANDFILL ROAD	3	-
HARMONY AVENUE	3	-
HOWARD STREET	3	-
WILLIAM STREET	3	-
CAMPUS AVENUE	3	-
SUNRISE AVENUE	2	-
EXPO DRIVEWAY	3	-

NOTE: MINIMUM BUTT JOINT LENGTH = 3m

REVISIONS	
NAME	DATE

ILLINOIS DEPARTMENT OF TRANSPORTATION
 ILLINOIS ROUTE 8 - SEGMENT 2
 BUTT JOINTS AND PAVEMENT
 DETAILS

SCALE: N.T.S. DRAWN BY: RLK
 DATE: DECEMBER, 2003 CHECKED BY: SAE