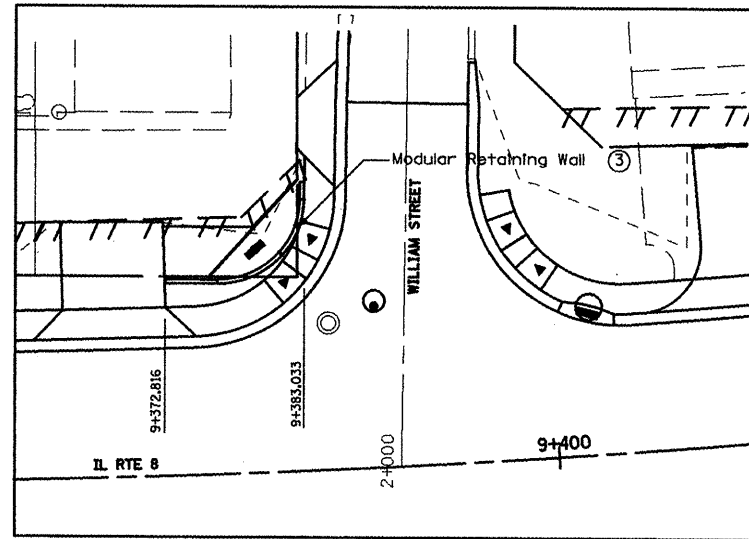
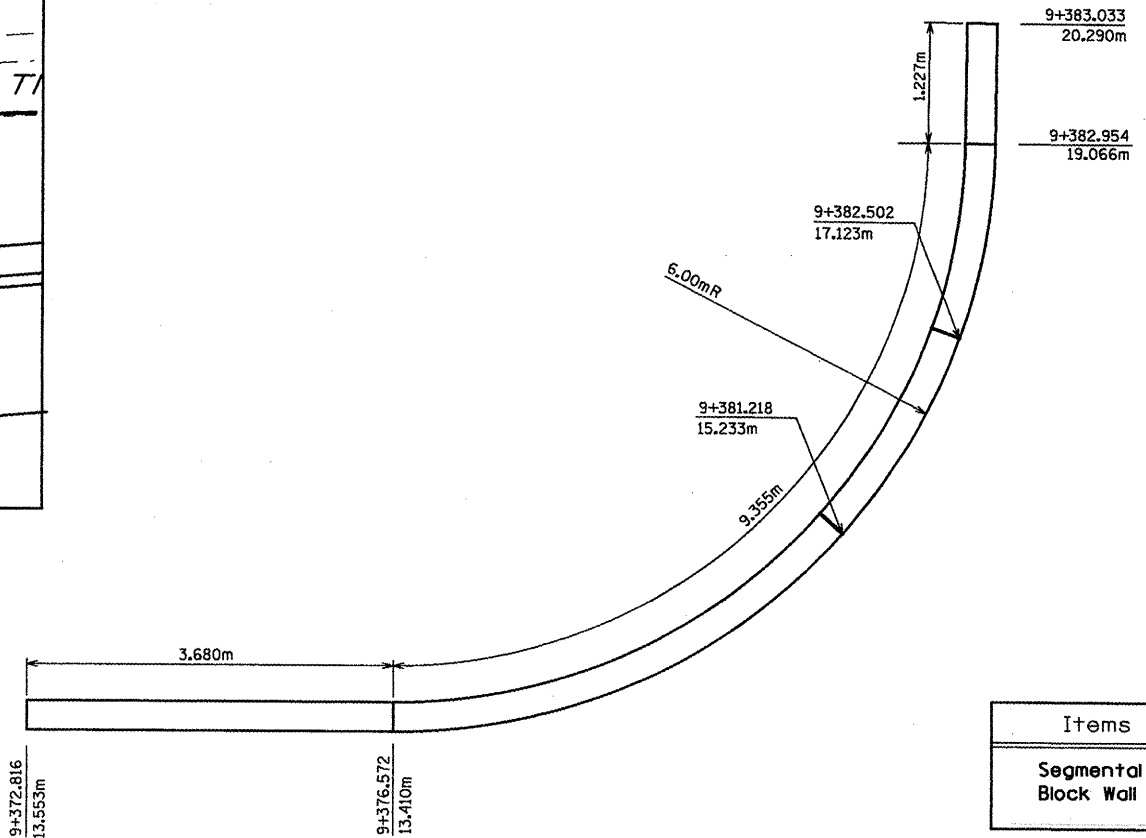


F.A.P. RTE.	SECTION	COUNTY	TOTAL SHEETS	SHEET NO.
399	36R-1, (37R-2)	TAZEWELL	449	238
STA 7+663.000		TO STA 10+097.000		
FED. ROAD DIST. NO. 4		ILLINOIS FED. AID PROJECT		



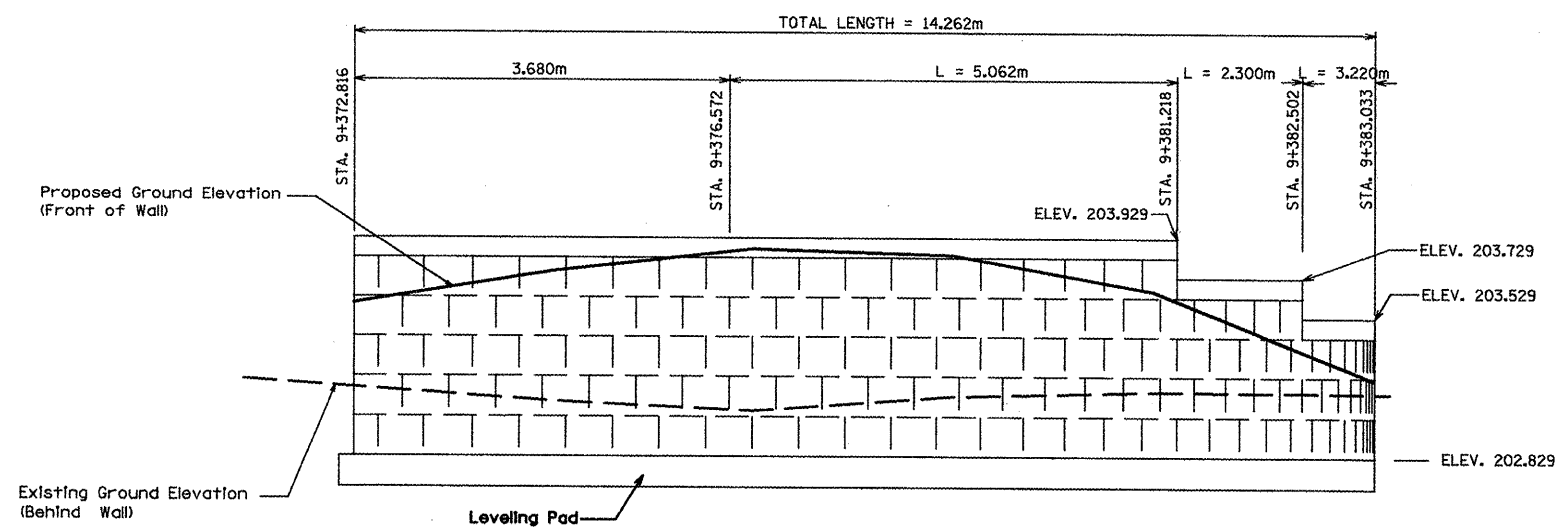
MODULAR RETAINING WALL LOCATIONS



Lt. Sta. 9+372.816 to 9+383.033
PLAN VIEW
(Modular Retaining Wall (3))

BILL OF MATERIALS
Modular Retaining Wall (3)

Items	Unit	Quantity
Segmental Concrete Block Wall	SQ. M.	13.940



Lt. Sta. 9+372.816 to 9+383.033
ELEVATION
(Modular Retaining Wall (3))

REVISIONS	
NAME	DATE

ILLINOIS DEPARTMENT OF TRANSPORTATION
ILLINOIS ROUTE 8 - SEGMENT 2
MODULAR RETAINING WALL
SYSTEM DETAILS
LOCATION # 3
SCALE: NTS
DATE: NOVEMBER, 2009
DRAWN BY: LCE
CHECKED BY: ENE