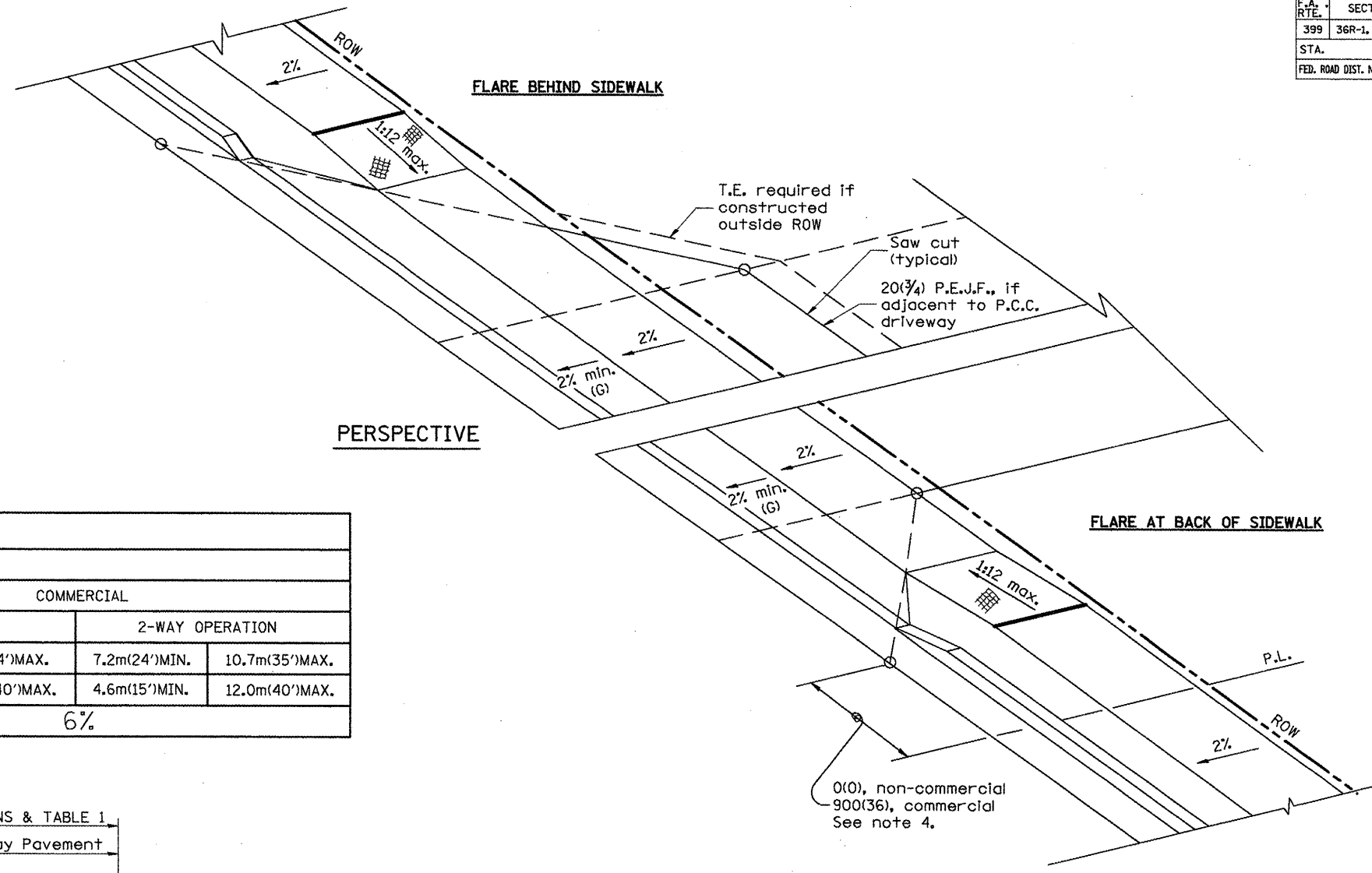
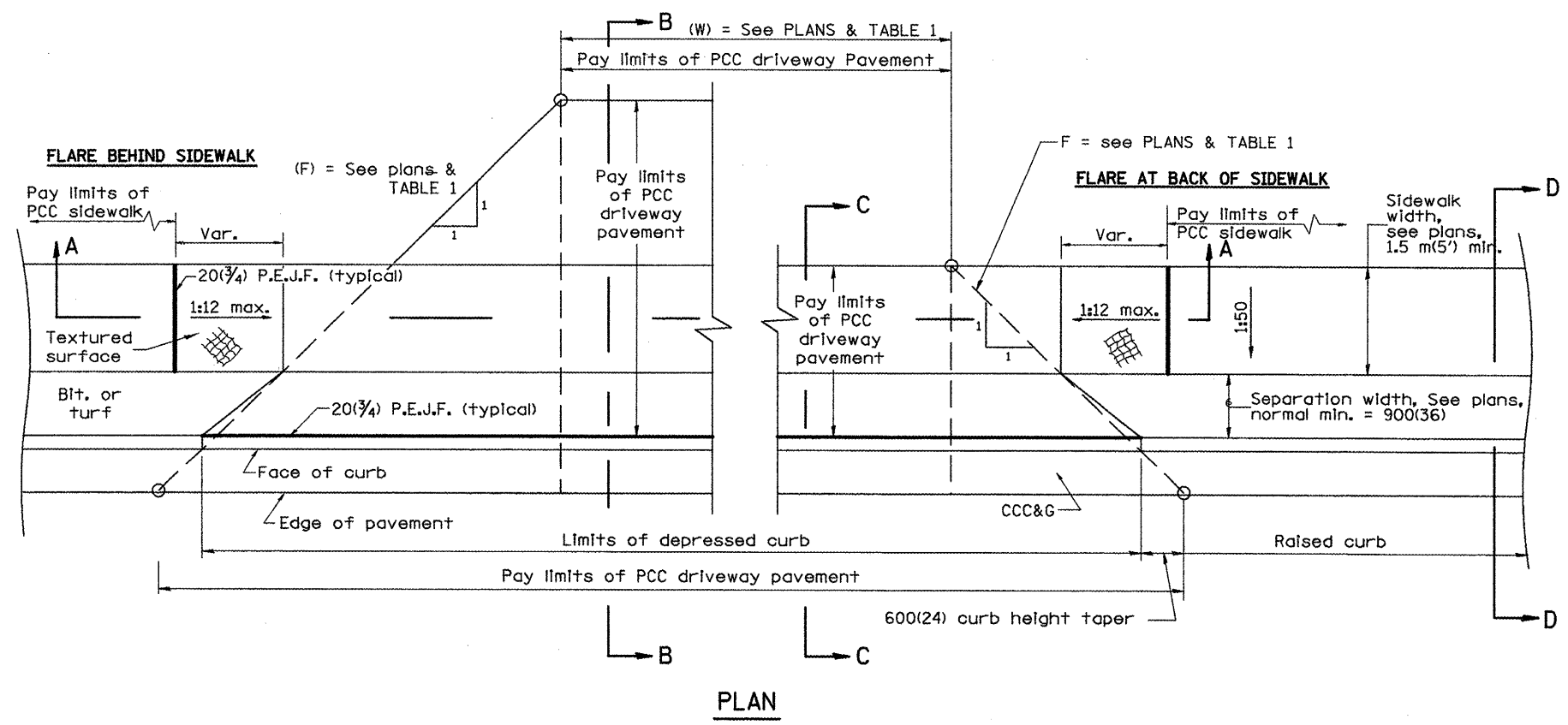


F.A. RTE.	SECTION	COUNTY	TOTAL SHEETS	SHEET NO.
399	36R-1, (37R-2)	TAZEWELL	449	246
STA.		TO STA.		
FED. ROAD DIST. NO. 4 ILLINOIS FED. AID PROJECT				



PERSPECTIVE

ELEMENT	NON-COMMERCIAL		COMMERCIAL			
			1-WAY OPERATION		2-WAY OPERATION	
WIDTH (W)	3.6m(12')MIN.	7.2m(24')MAX.	4.3m(14')MIN.	7.2m(24')MAX.	7.2m(24')MIN.	10.7m(35')MAX.
RADIUS EQUIVALENT 1:1 FLARE (F)	1.5m(5')MIN.	7.6m(25')MAX.	4.6m(15')MIN.	12.0m(40')MAX.	4.6m(15')MIN.	12.0m(40')MAX.
MAX. GRADE (G)	8%		6%			



PLAN

GENERAL NOTES

1. Refer to State Standard 424001 for texturing and other disabled accessibility design elements.
2. The sidewalk area located within the pay limits of P.C.C. Driveway Pavement will be of the same thickness and construction as the P.C.C. Driveway Pavement.
3. Combination Concrete Curb & Gutter shall be depressed in accordance with Standard 606001.
4. Exceptions to the radius flare/property line relationship are as shown in the plans for common entrances, with jointly executed access permits.

All dimensions are in millimeters (inches) unless otherwise noted.

ILLINOIS DEPARTMENT OF TRANSPORTATION
DISTRICT CADD STANDARD

URBAN ENTRANCES
ACCESSIBLE TO THE DISABLED
FOR SEPARATED SIDEWALKS
CADD STD NO. 423106-D4 SHEET 1 OF 2
SCALE: NOT DRAWN TO SCALE DRAWN BY CADD
DATE **DATE** CHECKED BY

DATE	REVISIONS	BY
1-1-97	RENUM. C-103.01, NEW REVISION BOX	T.P.
1-17-03	REMOVE CURB CONTRACTION JOINT	JATR M.M.A.
9-15-05		

1:1 FLARES ARE RECOMMENDED FOR SIDEWALKS WITH NARROW SEPARATIONS. DESIGNER SHOULD REVIEW BDE CHAPTER 58.