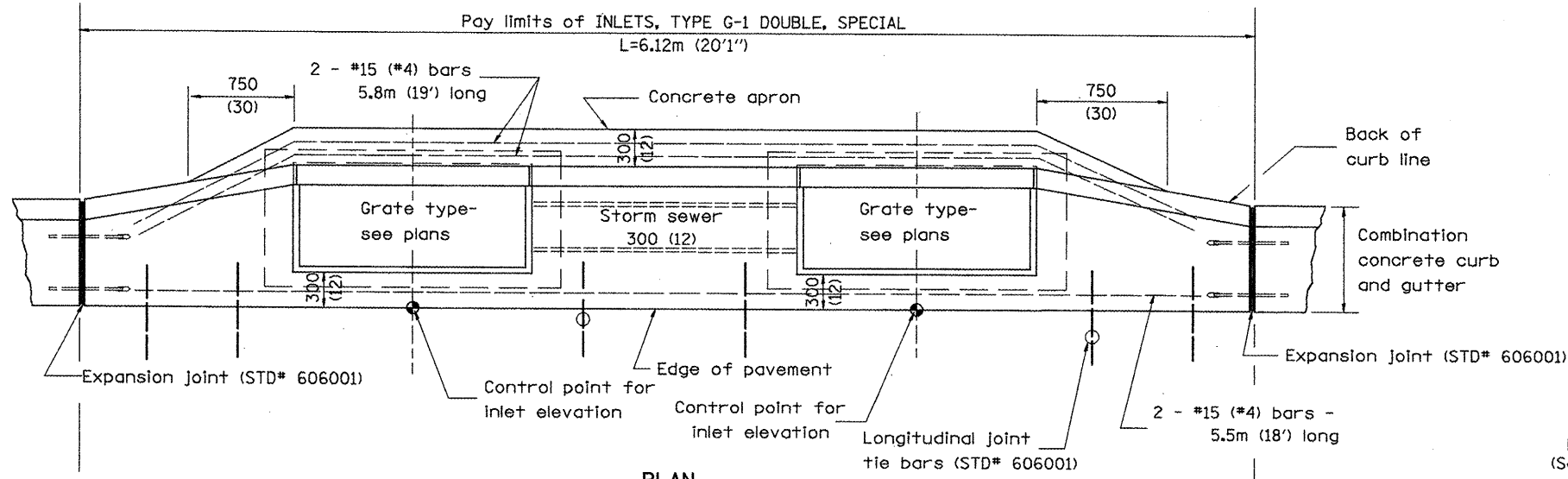
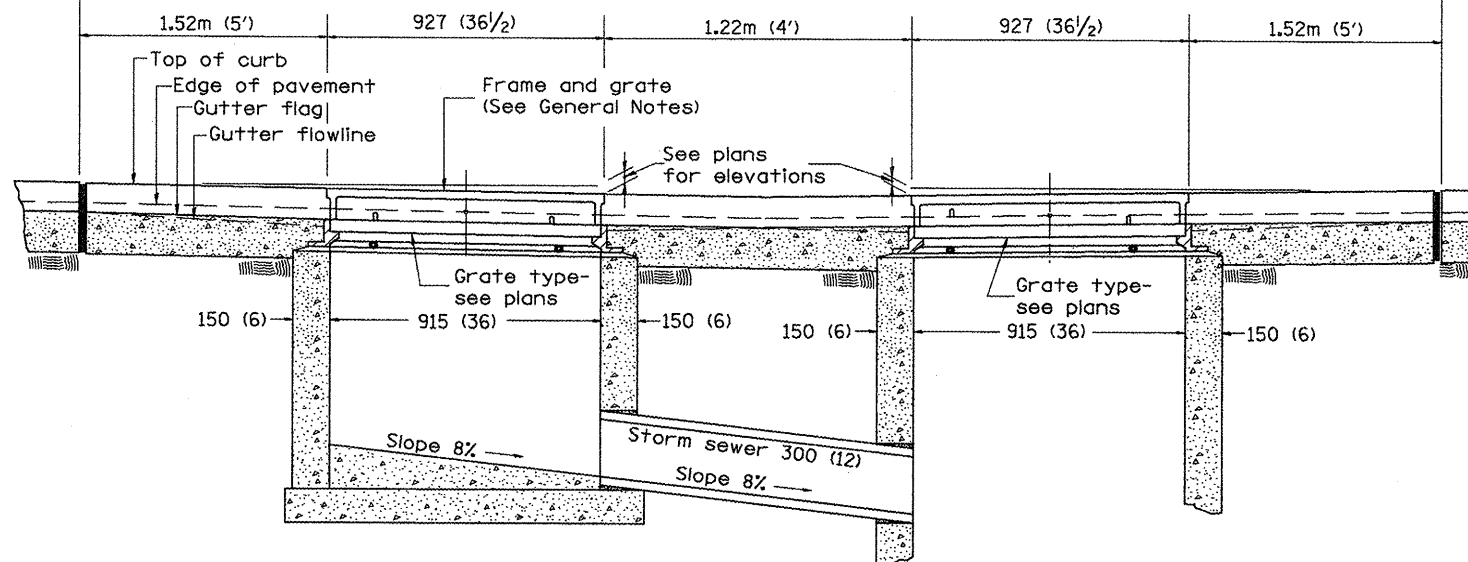


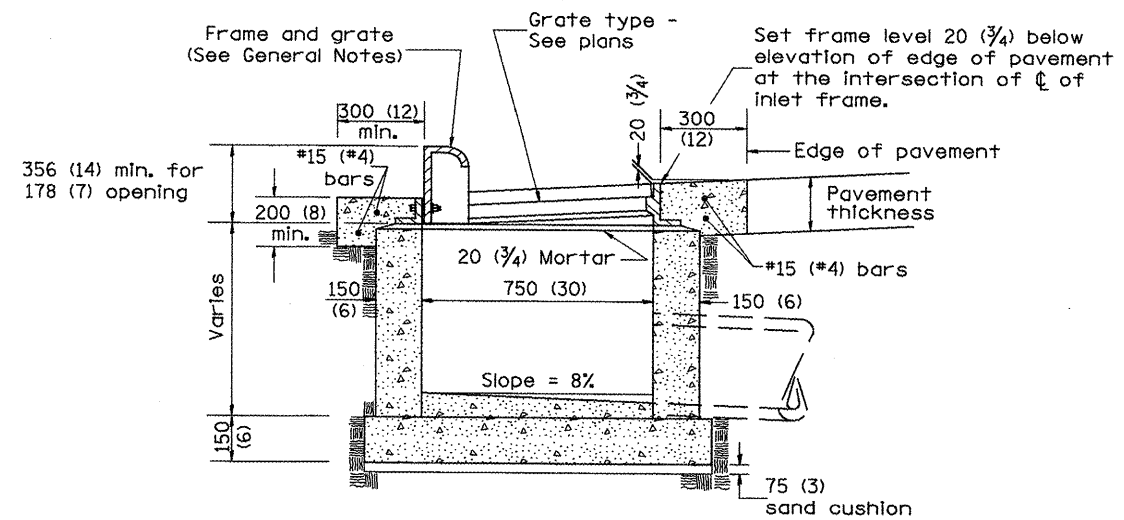
F.A.P. RTE.	SECTION	COUNTY	TOTAL SHEETS	SHEET NO.
399	36R-1, (37R-2)	TAZEWELL	449	266
STA.		TO STA.		
FED. ROAD DIST. NO. 4		ILLINOIS	FED. AID PROJECT	



PLAN



FRONT ELEVATION



ELEVATION (SIDE)

GENERAL NOTES

1. Inlet construction shall be in accordance with Section 602 of the Standard Specifications.
2. Combination Concrete Curb & Gutter shall be constructed in accordance with Section 606 of the Standard Specifications.
3. See District CADD Standard 604001-D4 for frame and grates.

All dimensions are in millimeters (inches) unless otherwise noted.

ILLINOIS DEPARTMENT OF TRANSPORTATION  
DISTRICT CADD STANDARD

INLETS, TYPE G-1 DOUBLE,  
SPECIAL

CADD STANDARD 602016-D4

SCALE NOT TO SCALE  
DATE ##DATE##

DRAWN BY CADD  
CHECKED BY

DATE	BY
1-1-97	RENUM, B-4.04, NEW REVISION BOX
4-1-97	CORRECT DIMENSIONS
10-99	REVISION TO GENERAL NOTES

602016-D4

1. Include State Standard 606001 for combination concrete curb and gutter details.  
 2. Include State Standard 420001 for pavement joints.  
 3. Include District CADD Standard for frame and grates.  
 4. Include District Special Provision. Pay item includes transitional c.c.c & g., inlet and frame and grate. All work within pay limits.  
 5. Specify grate type in plans.

\$\$\$DATE\$\$\$

\*DCN-ONLY\*