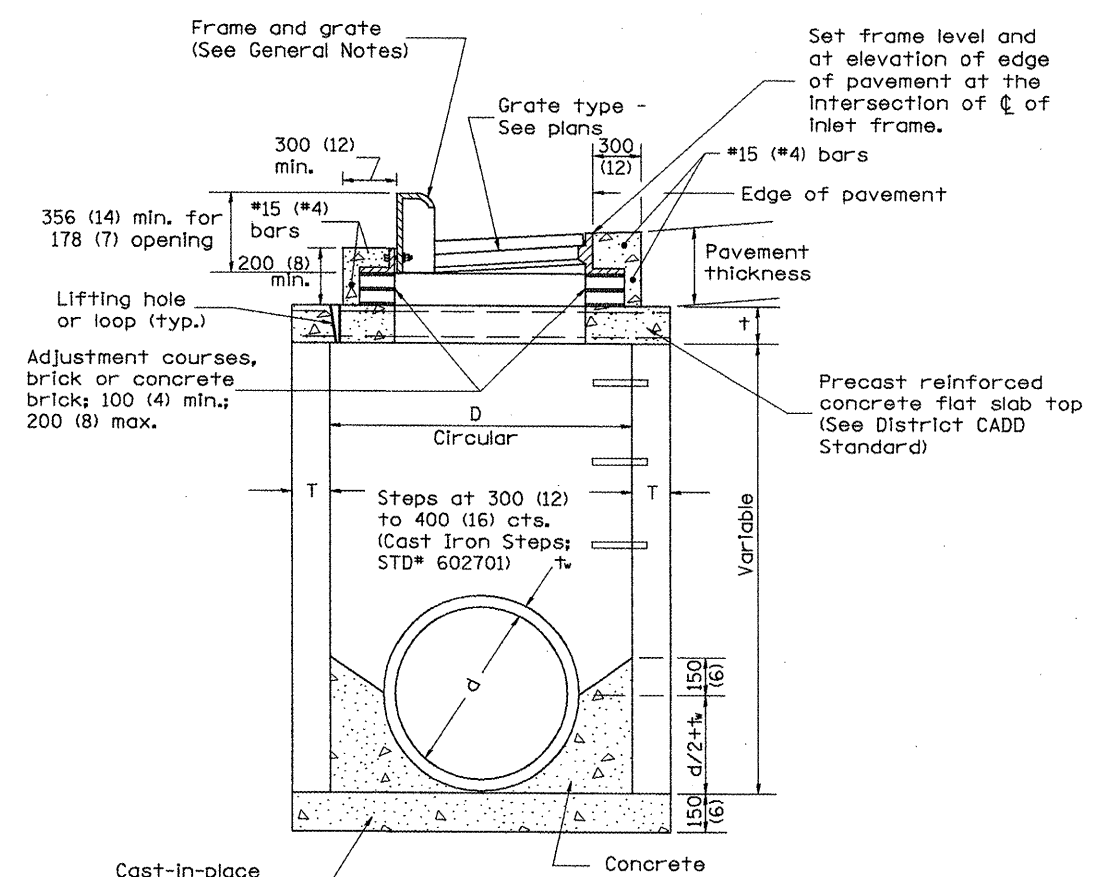
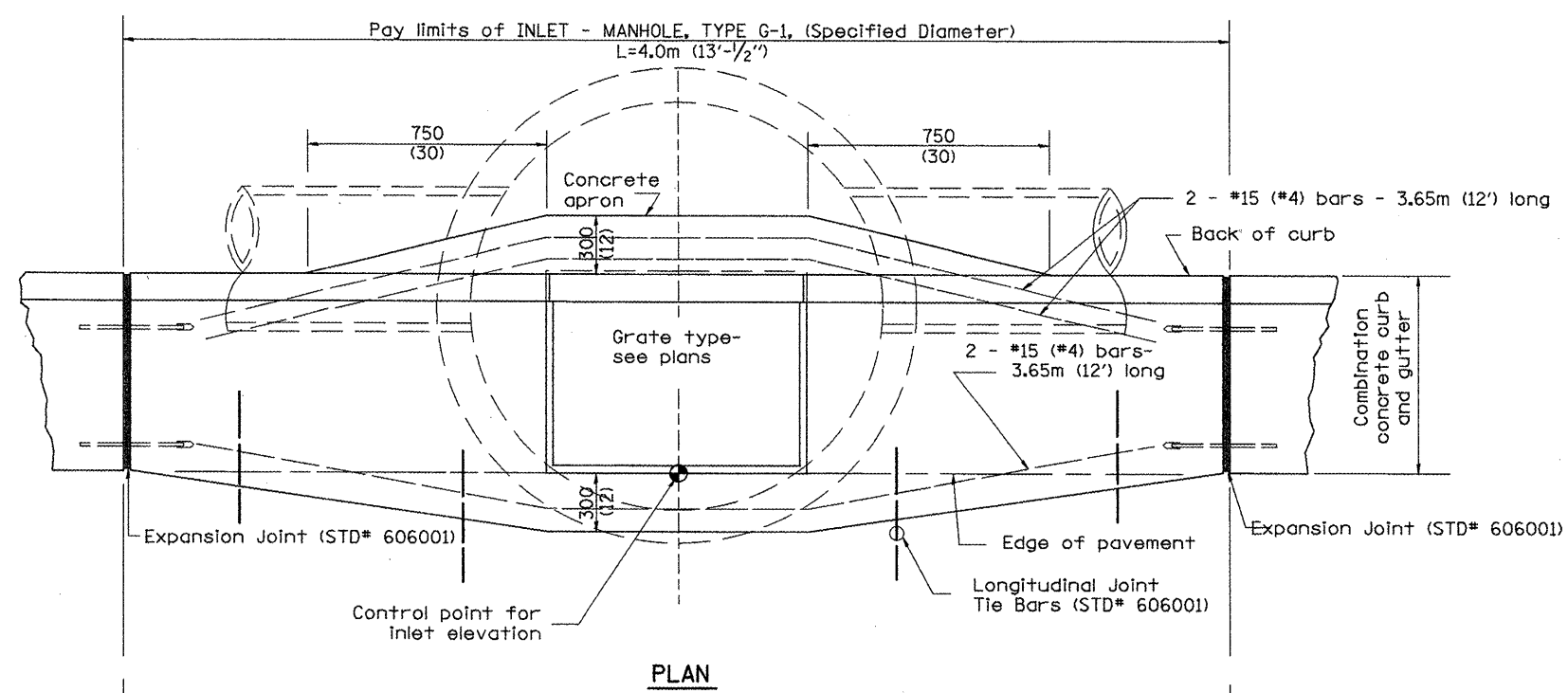


F.A.P. RTE.	SECTION	COUNTY	TOTAL SHEETS	SHEET NO.
399	36R-1, (37R-2)	TAZEWELL	449	267
STA.		TO STA.		
FED. ROAD DIST. NO. 4		ILLINOIS FED. AID PROJECT		

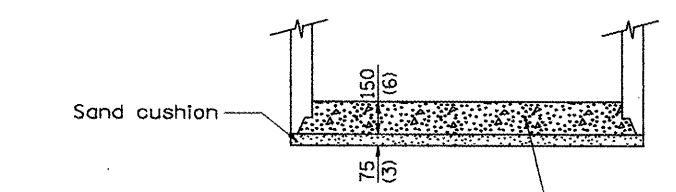
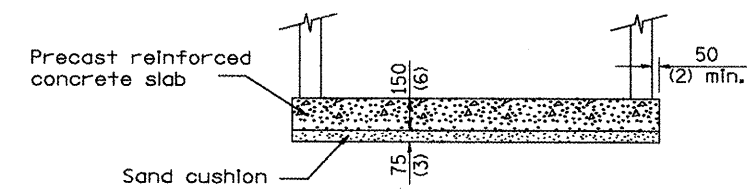
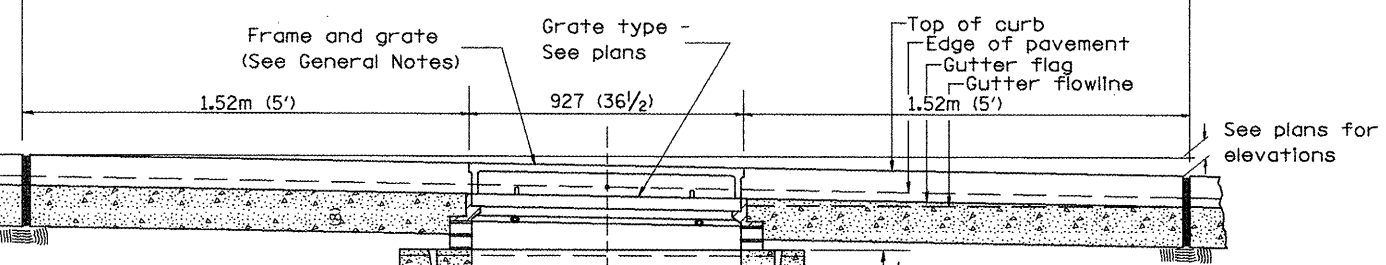


TABLE

D	T	†
1.2m (4')	125 (5)	150 (6)
1.5m (5')	150 (6)	200 (8)
1.8m (6')	195 (7 3/4)	200 (8)
2.4m (8')	225 (9)	250 (10)

GENERAL NOTES

1. Inlet-manhole construction shall be in accordance with Section 602 of the Standard Specifications.
2. Combination concrete curb and gutter shall be constructed in accordance with Section 606 of the Standard Specifications.
3. See District CADD Standard 604001-D4 for frame and grates.
4. See District CADD Standard for precast reinforced concrete flat slab top.



All dimensions are in millimeters (Inches) unless otherwise noted.

ILLINOIS DEPARTMENT OF TRANSPORTATION
DISTRICT CADD STANDARD
INLET-MANHOLE, TYPE G-1
 CADD STANDARD 602021-D4
 SCALE NOT TO SCALE
 DATE **DATE**
 DRAWN BY CADD
 CHECKED BY

DATE	REVISIONS	BY
1-1-97	RENUM. B-4.05, NEW REVISION BOX	J.A.
10-99	REVISION TO GENERAL NOTES	J.A.
2-00	REVISION TO DESIGNER NOTES	J.A.

3. Include State STD# 602701 for cast iron steps.
 4. Include District CADD Standard for frame and grates and specify gate type in plans.
 5. Include District CADD Standard for precast reinforced concrete flat slab top.
 6. Include District Special Provision. Pay item includes inlet - manhole, flat slab top, transitional c.c.&g. and frame and grate. All work within pay limits.
 7. Specify diameter of inlet - manhole in plans.
 8. The designer should include pavement removal quantities when the apron requires pavement removal.
 DATE