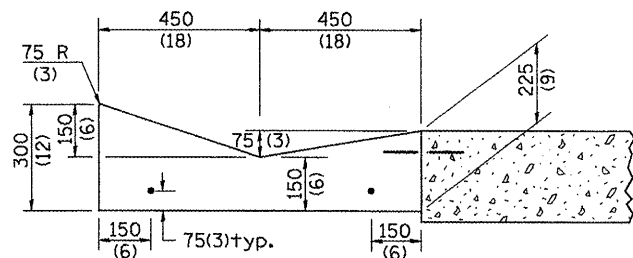
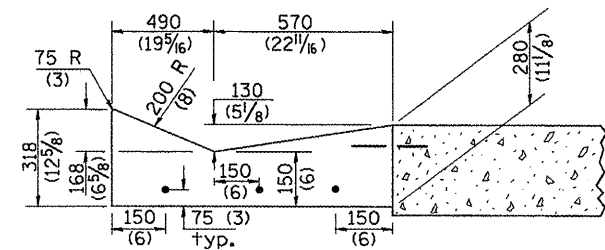


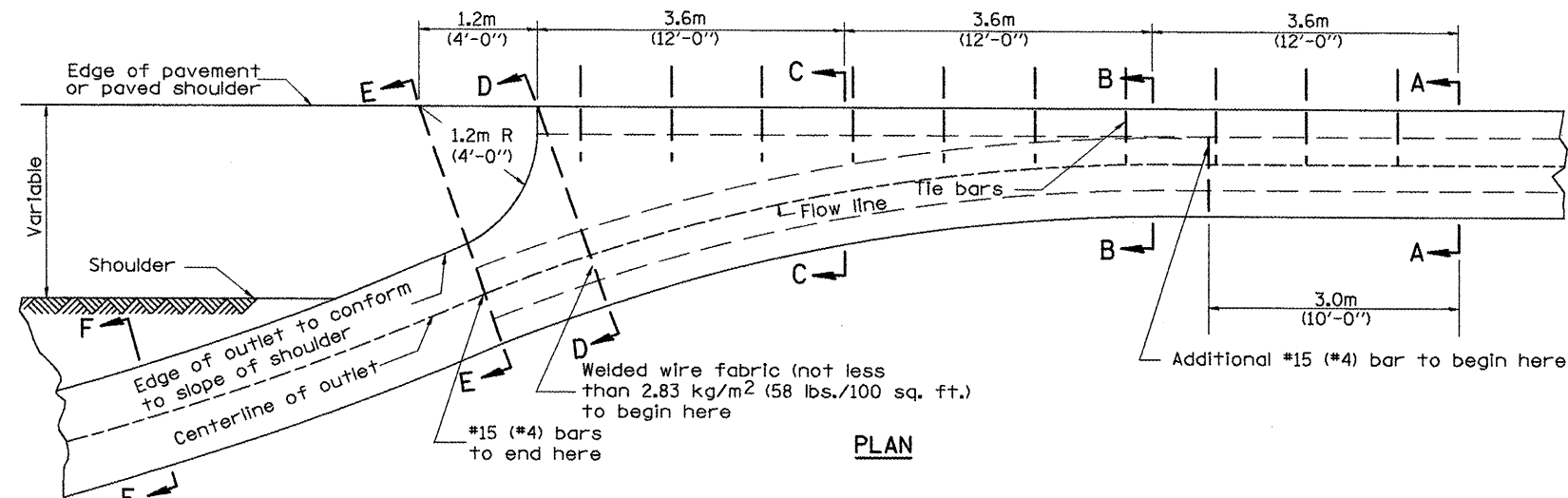
F.A.P. RTE.	SECTION	COUNTY	TOTAL SHEETS	SHEET NO.
399	36R-1, (37R-2)	TAZEWELL	449	273
STA.		TO STA.		
FED. ROAD DIST. NO. 4 ILLINOIS FED. AID PROJECT				



SECTION A-A



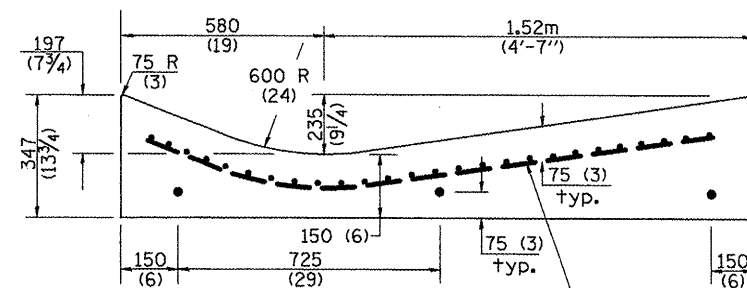
SECTION B-B



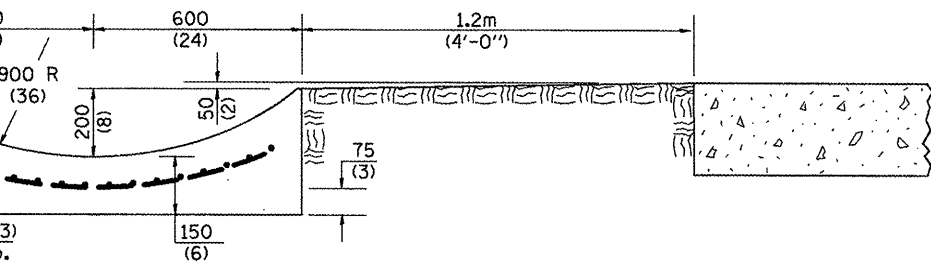
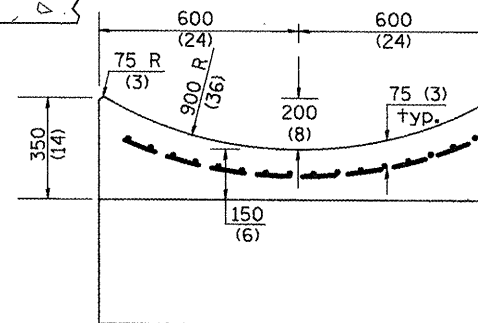
PLAN

QUANTITY
 Section A-A to E-E= m³ (cu. yd.) concrete.
 Section F-F= m³ (cu. yd./ft.) concrete.

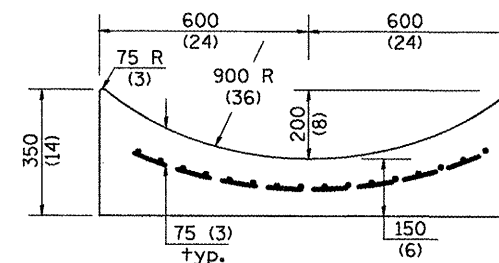
If the average grade of pavement for the distance from section A-A to section D-D exceeds 2%, this distance shall be increased 1.8 m (6 ft.) for each 1% increase in grade. A quantity adjustment is required.



SECTION D-D

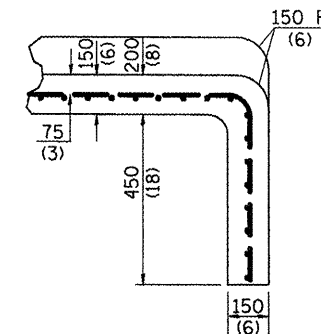


SECTION E-E



SECTION F-F

QUANTITY
 Curtain Wall
 m³ (cu. yd.) concrete.



SECTIONS AT END OF OUTLET (CURTAIN WALL)

OUTLET

QUANTITIES

CALC. BY: _____ DATE: _____
 CHECKED BY: _____ DATE: _____

QUANTITY CALCULATIONS ARE ON FILE AT THE DISTRICT 4 OFFICE; BUREAU OF PROJECT IMPLEMENTATION; DOCUMENTATION SECTION

All dimensions are in millimeters (inches) unless otherwise noted.

ILLINOIS DEPARTMENT OF TRANSPORTATION
DISTRICT CADD STANDARD
TYPE A GUTTER, (MODIFIED)
(INLET, OUTLET & ENTRANCE)
 CADD STANDARD 606101-D4 SHEET 2 OF 3
 SCALE: NOT DRAWN TO SCALE DRAWN BY CADD
 DATE **DATE** CHECKED BY