

F.A.U. RTE.	SECTION	COUNTY	TOTAL SHEETS	SHEET NO.
6775	04-00141-00-FP	TAZEWELL	187	1
FED. ROAD DIST. NO.	ILLINOIS	CONTRACT NO. 89352		

SURVEY BOOK 492

### INDEX OF SHEETS

NUMBER	SHEET TITLE
1	COVER SHEET
2 - 7	SUMMARY OF QUANTITIES
8 - 9	GENERAL NOTES
10 - 11	STATUS OF UTILITIES
12 - 17	TYPICAL SECTIONS
18 - 31	SCHEDULE OF QUANTITIES
32 - 33	DRAINAGE SCHEDULES
34	HORIZONTAL AND VERTICAL CONTROL
35 - 40	EXISTING AND REMOVAL PLAN SHEETS
41 - 51	ROADWAY CONSTRUCTION PLAN
52 - 57	ROADWAY PROFILES
58	ARGO STREET PLAN AND PROFILE
59 - 67	STAGING AND TRAFFIC CONTROL PLANS
68 - 70	ILLINOIS ROUTE 8 EROSION CONTROL PLANS
71 - 72	SUMMIT DRIVE DRAINAGE, UTILITY, & EROSION CONTROL PLAN SHEETS
73 - 75	ILLINOIS ROUTE 8 DRAINAGE PLANS - LT
76 - 78	ILLINOIS ROUTE 8 DRAINAGE PLANS - RT
79	INTERSECTION DETAILS
80	ILLINOIS ROUTE 8 ROW PLAN
81 - 82	PAVEMENT JOINT PLAN
83 - 86	ROUTE 8 PAVEMENT MARKING AND LANDSCAPING PLANS
87 - 93	TRAFFIC SIGNAL PLANS
94	MEDIAN ISLAND DETAILS
95 - 96	MODULAR RETAINING WALL DETAILS
97 - 99	CULVERT DETAILS
100 - 136	SPECIAL DETAILS
137 - 139	SOUTH SUMMIT CROSS SECTIONS
140 - 162	NORTH SUMMIT CROSS SECTIONS
163 - 183	IL ROUTE 8 CROSS SECTIONS
184 - 187	SIDE ROAD CROSS SECTIONS

### LIST OF STANDARDS

NO.	DESCRIPTION
000001-05	STANDARD SYMBOLS, ABBREVIATIONS, AND PATTERNS
280001-05	TEMPORARY EROSION CONTROL SYSTEMS
420001-07	PAVEMENT JOINTS
420101-04	24' JOINTED PCC PAVEMENT
420106-04	36' JOINTED PCC PAVEMENT
420111-02	PCC PAVEMENT ROUNOOTS
424001-05	CURB RAMP FOR SIDEWALKS
442201-03	CLASS C AND D PATCHES
542106-02	REINFORCED CONCRETE END SECTIONS FOR PIPE CULVERTS 42" THRU 60" DIA. AT RIGHT ANGLES WITH ROADWAY
542111-02	REINFORCED CONCRETE END SECTIONS FOR PIPE CULVERTS 66" THRU 84" DIA. AT RIGHT ANGLES WITH ROADWAY
542301-02	PRECAST REINFORCED CONCRETE FLARED END SECTION
542401-01	METAL END SECTION FOR PIPE CULVERTS
542601-02	REINFORCED CONCRETE PIPE ELBOW
601101-01	CONCRETE HEADWALL FOR PIPE DRAIN
602301-02	INLET-TYPE A
602401-02	MANHOLE, TYPE A
602406-03	MANHOLE TYPE A 6' DIAMETER
602416-01	MANHOLE TYPE A 8' DIAMETER
602421-01	MANHOLE TYPE A 9' DIAMETER
602701-02	MANHOLE STEPS
604001-03	FRAME AND LIDS, TYPE 1
604016-02	FRAME AND GRATE TYPE 4
604036-02	GRATE TYPE 8
604041-02	FRAME AND GRATE, TYPE 9
606001-04	CONCRETE CURB TYPE B AND COMBINATION CONCRETE CURB AND GUTTER
606301-04	PC CONCRETE ISLANDS AND MEDIANS
701301-03	LANE CLOSURE, 2L, 2W, SHORT TIME OPERATIONS
701311-03	LANE CLOSURE, 2L, 2W, MOVING OPERATIONS-DAY ONLY
701326-03	LANE CLOSURE, 2L, 2W, PAVEMENT WIDENING, FOR SPEEDS >=45 MPH
701501-05	URBAN LANE CLOSURE, 2L, 2W, UNDIVIDED
701602-04	URBAN LANE CLOSURE, MULTILANE, 2W WITH BIDIRECTIONAL LEFT TURN LANE
701606-06	URBAN LANE CLOSURE, MULTILANE, 2W WITH MOUNTABLE MEDIAN
701701-06	URBAN LANE CLOSURE, MULTILANE INTERSECTION
701801-04	LANE CLOSURE MULTILANE, 1W OR 2W CROSSWALK OR SIDEWALK CLOSURE
701901-01	TRAFFIC CONTROL DEVICES
720016-02	MAST ARM MOUNTED STREET NAME SIGNS
780001-02	TYPICAL PAVEMENT MARKINGS
805001-01	ELECTRICAL SERVICE INSTALLATION DETAILS
814001-02	HANDHOLES
814006-02	DOUBLE HANDHOLES
857001-01	STANDARD PHASE DESIGNATION DIAGRAMS AND PHASE SEQUENCES
862001-01	UNINTERRUPTIBLE POWER SUPPLY (UPS)
873001-02	TRAFFIC SIGNAL GROUNDING AND BONDING
877011-04	STEEL COMBINATION MAST ARM ASSEMBLY AND POLE 16' THROUGH 55'
877012-01	STEEL COMBINATION MAST ARM ASSEMBLY AND POLE 56' THROUGH 75'
878001-07	CONCRETE FOUNDATION DETAILS
880001-01	SPAN WIRE MOUNTED SIGNALS AND FLASHING BEACON INSTALLATION
880006-01	TRAFFIC SIGNAL MOUNTING DETAILS
886001-01	DETECTOR LOOP INSTALLATIONS
886006-01	TYPICAL LAYOUTS FOR DETECTION LOOPS
BLR 21-8	TYPICAL APPLICATION OF TRAFFIC CONTROL DEVICES FOR CONSTRUCTION ON RURAL LOCAL HIGHWAYS

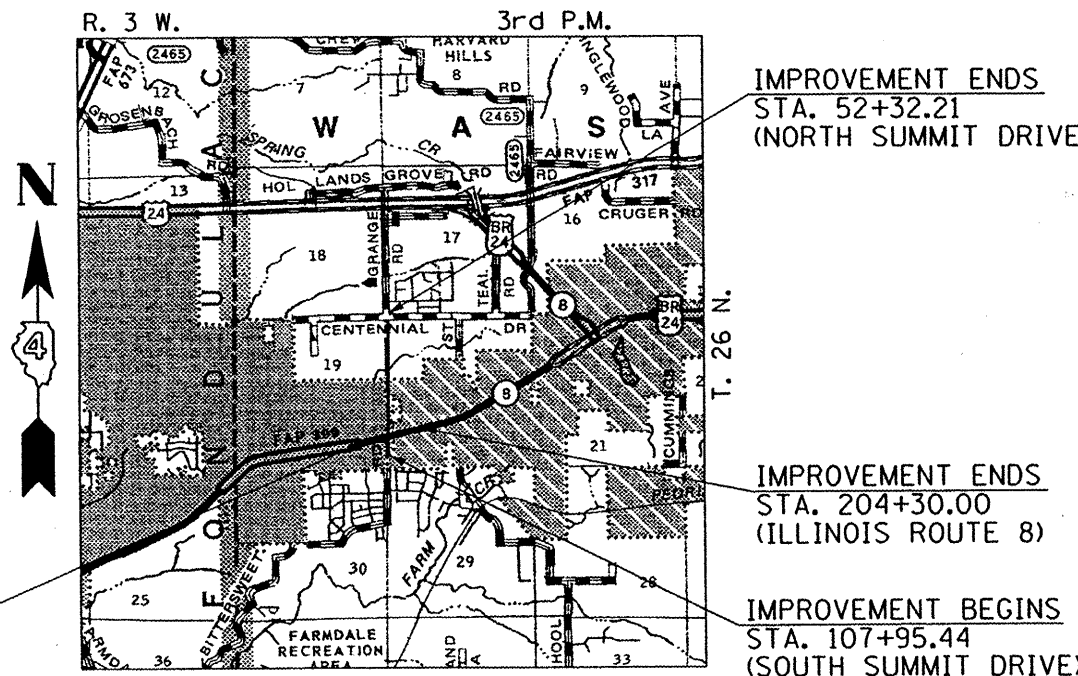
FULL SIZE PLANS HAVE BEEN PREPARED USING STANDARD ENGINEERING SCALES  
 REDUCED SIZED PLANS WILL NOT CONFORM TO STANDARD SCALES. IN MAKING  
 MEASUREMENTS ON REDUCED PLANS, THE ABOVE SCALES MAY BE USED.

UTILITIES ARE SHOWN FOR INFORMATIONAL PURPOSES ONLY. CALL  
 J.U.L.I.E., JOINT UTILITY LOCATION INFORMATION PRIOR TO  
 EXCAVATION AT 1-800-892-0123.

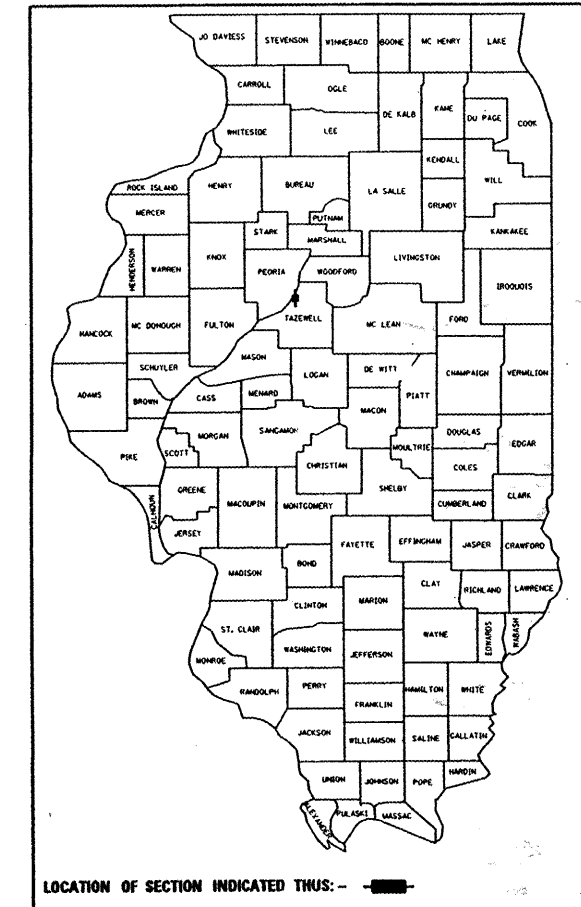
CONTRACT NO. 89352

JOB NO. C-94-067-04

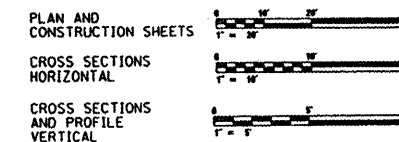
STATE OF ILLINOIS  
 DEPARTMENT OF TRANSPORTATION  
 PLANS FOR  
**PROPOSED LOCAL AGENCY IMPROVEMENT**  
**PROJECT: M-5093(113)**  
 F.A.U. ROUTE 6775 (SUMMIT DRIVE)  
 SECTION 04-00141-00-FP  
 C-94-067-04  
 CITY OF EAST PEORIA  
 TAZEWELL COUNTY



LENGTH OF PROJECT: 4937.38 FEET = 0.935 MILES



### ENGLISH RATIOS



**CITY OF EAST PEORIA**  
**DEPARTMENT OF PUBLIC WORKS**

DATE OF APPROVAL 4-2-10  
*Shirley J. Johnson*  
 DIRECTOR OF PUBLIC WORKS

**STATE OF ILLINOIS**  
**DEPARTMENT OF TRANSPORTATION**  
**DIVISION OF HIGHWAYS**

PASSED 4/2/10  
*John J. Leary*  
 DISTRICT ENGINEER OF LOCAL ROADS AND STREETS

RELEASED FOR  
 BID BASED ON  
 LIMITED REVIEW  
*John J. Leary*  
 DEPUTY DIRECTOR OF HIGHWAYS, REGION THREE ENGINEER

PLANS PREPARED BY:

RYAN M. BRADLE  
 062-055671  
 LICENSED  
 PROFESSIONAL  
 ENGINEER  
 OF  
 ILLINOIS

MAURER & STUTZ, INC.  
ENGINEERS SURVEYORS

*Ryan M. Bradle*

RYAN M. BRADLE, P.E. \*062-055671  
 LICENSED PROFESSIONAL ENGINEER  
 LICENSE EXPIRES: 11/30/2011

4/2/2010

DATE

MSI PROJECT NO.: 231-05005

