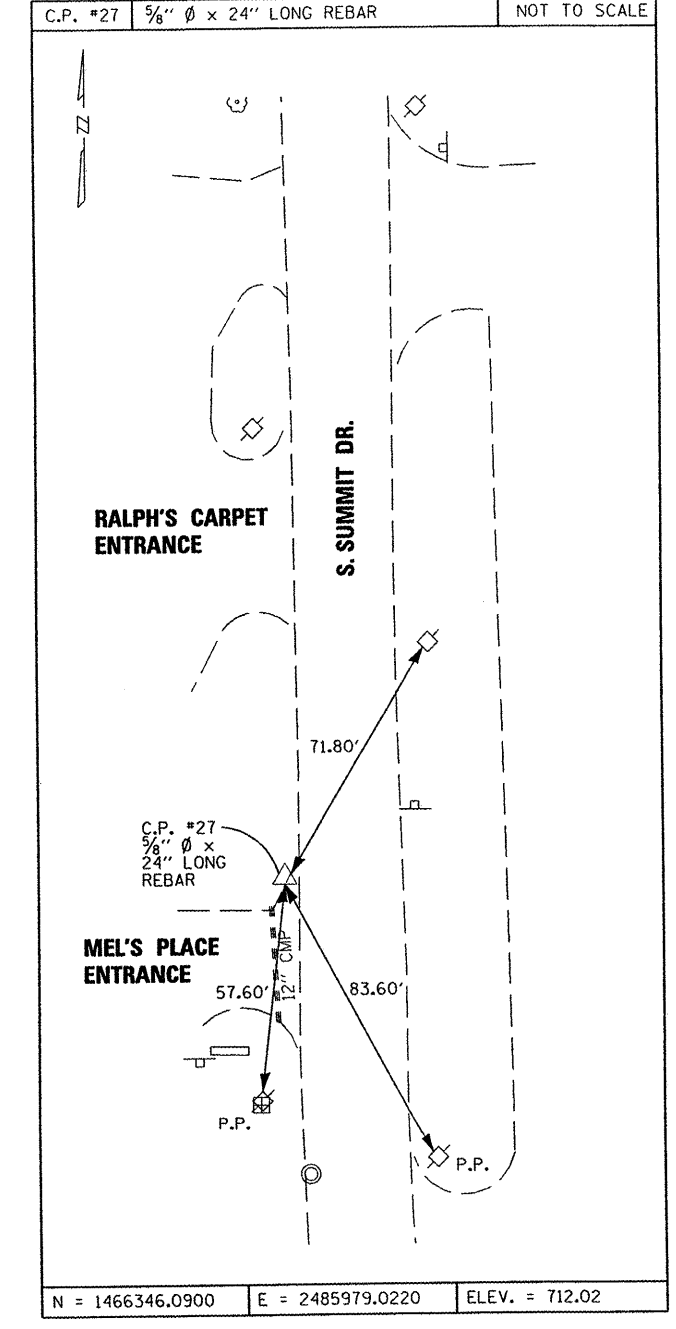
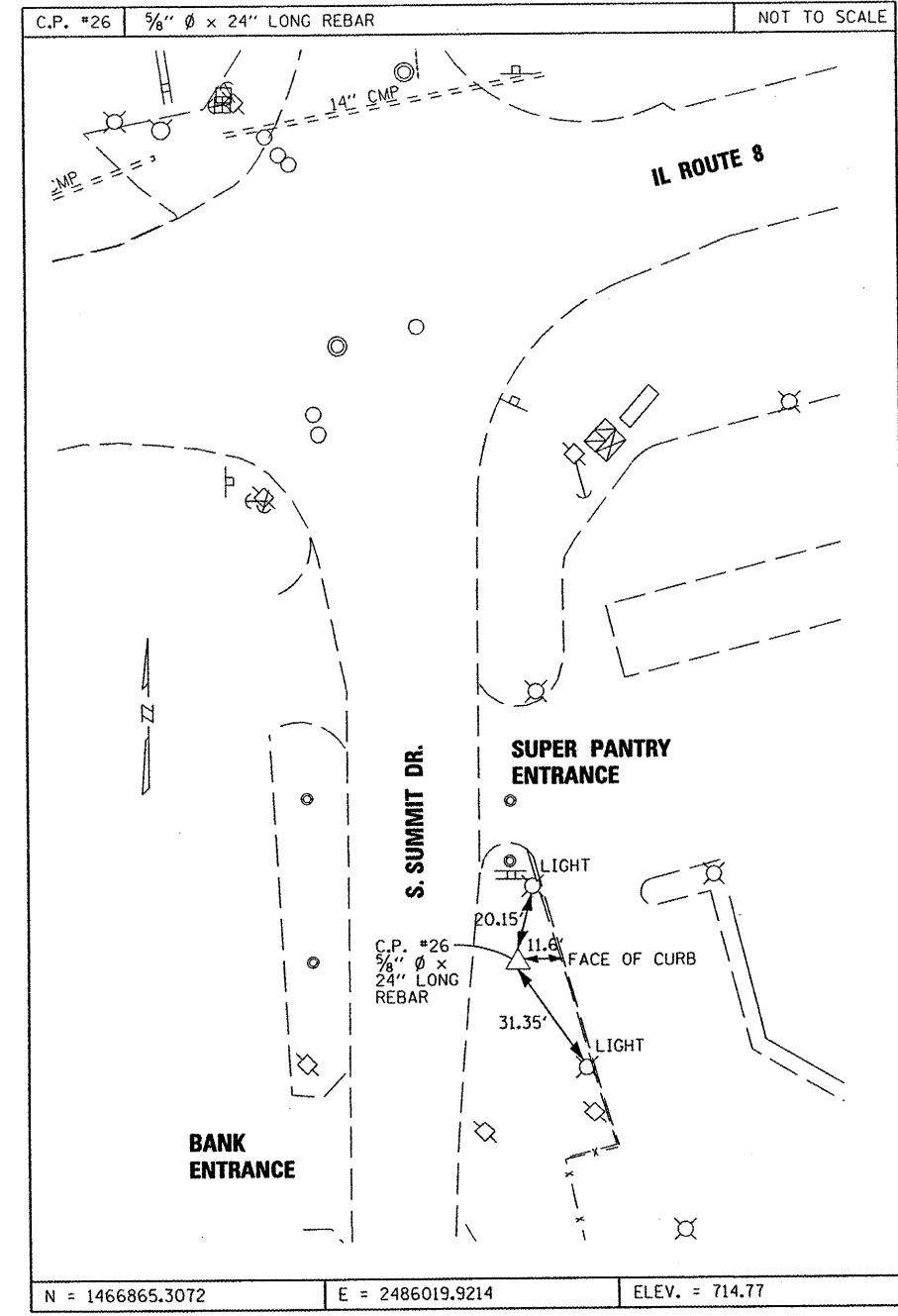
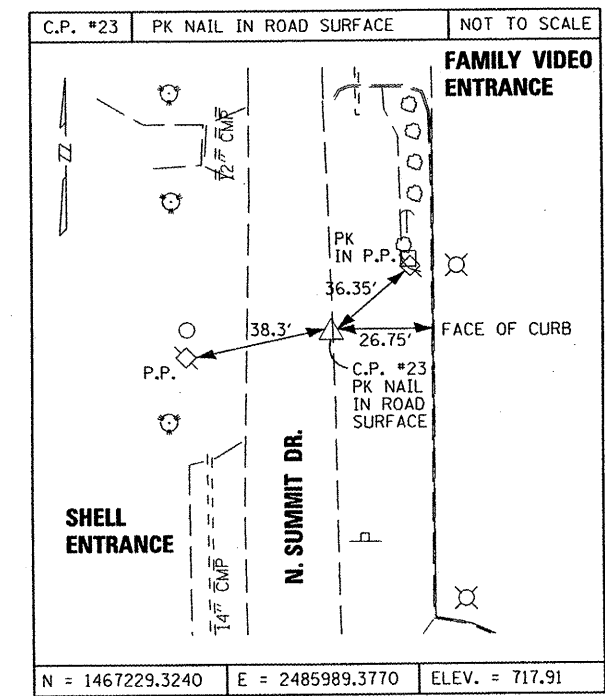
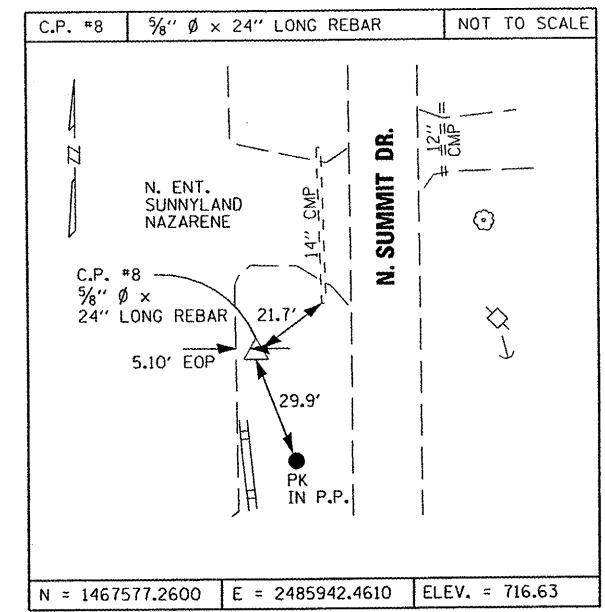
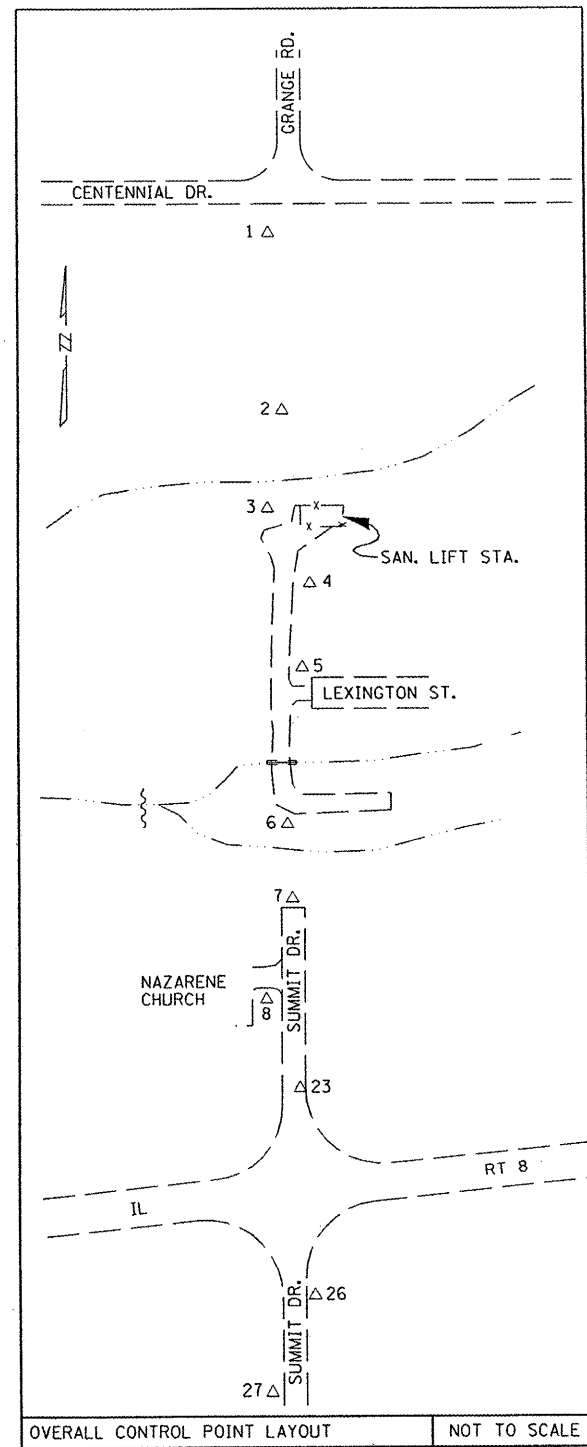


**PRELIMINARY
NOT FOR CONSTRUCTION**



POINT NUMBER	ELEVATION	DESCRIPTION
TBM #401	709.73	FD. R.R. SPIKE IN W. SIDE P.P. #692957 (2ND P.P. W. OF CENT. DR.)
TBM #402	689.14	SET 'X' MARK ON TOP METAL KNOB ON TOP OF N. FACING FLANGE OF PIPE ELBOW, 10'± S. OF LIFT STA. FENCE
TBM #403	705.81	FD. R.R. SPIKE W. SIDE P.P., 2ND P.P. S. OF LIFT STA.
TBM #404	691.19	FD. R.R. SPIKE W. SIDE P.P., 200'± S. OF LEXINGTON DR.
TBM #405	711.24	FD. R.R. SPIKE, E. SIDE RD., 100'± S. OF END OF EXIST. SUMMIT DR.
TBM #406	718.11	FD. CHIS. 'D' ON TOP W'LY SIDE CONC. BASE OF HIGH VOLTAGE METAL POLE, 100' N. FAMILY VIDEO ENT., MARKED "TBM EL. 717.69"

POINT NUMBER	NORTHING	EASTING	ELEVATION	DESCRIPTION
1	1471047.3440	2485874.2780	711.23	SET REBAR IN GRASS, 200'± S. OF CENT./GRANGE INT.
2	1469827.5840	2485908.8030	703.81	SET REBAR IN GRASS TOP BANK, N. SIDE OF CREEK, 74'± W'LY OF P.P. (2ND POLE N. OF CREEK NEAR SAN. LIFT STA.)
3	1469466.6310	2485948.0180	683.78	SET REBAR IN GRASS TOP BANK S. SIDE OF CREEK, 40'± W. OF LIFT STA. FENCE
4	1469262.6840	2485978.3980	700.67	SET REBAR 10'± E. OF E/RD., 200'± S. OF LIFT STA.
5	1468928.4810	2486000.7450	705.13	FD. 5/8" Ø I. PIPE SW COR LOT, 150' S. OF TBM 403
6	1468368.4400	2485983.8610	691.23	SET REBAR IN GRASS, 150'± S. OF TBM 404
7	1468244.0200	2485975.9890	709.60	SET REBAR IN GRASS @ END OF EXIST. SUMMIT RD. PVMT., 24'± N. OF E/PVMT, 18'± W. OF P.P.
8	1467577.2600	2485942.4610	716.63	SET REBAR IN GRASS @ SUNNYLAND NAZARENE CHURCH, 35' S. OF ENT. C, 4' E. OF E/PARK. LOT PVMT.
23	1467229.3240	2485989.3770	717.91	PK NAIL IN ROAD SURFACE
26	1466865.3072	2486019.9214	714.77	5/8" Ø x 24" LONG REBAR
27	1466346.0900	2485979.0220	712.02	5/8" Ø x 24" LONG REBAR