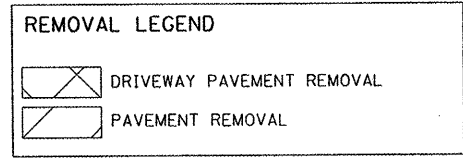
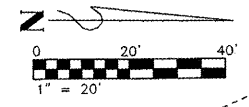
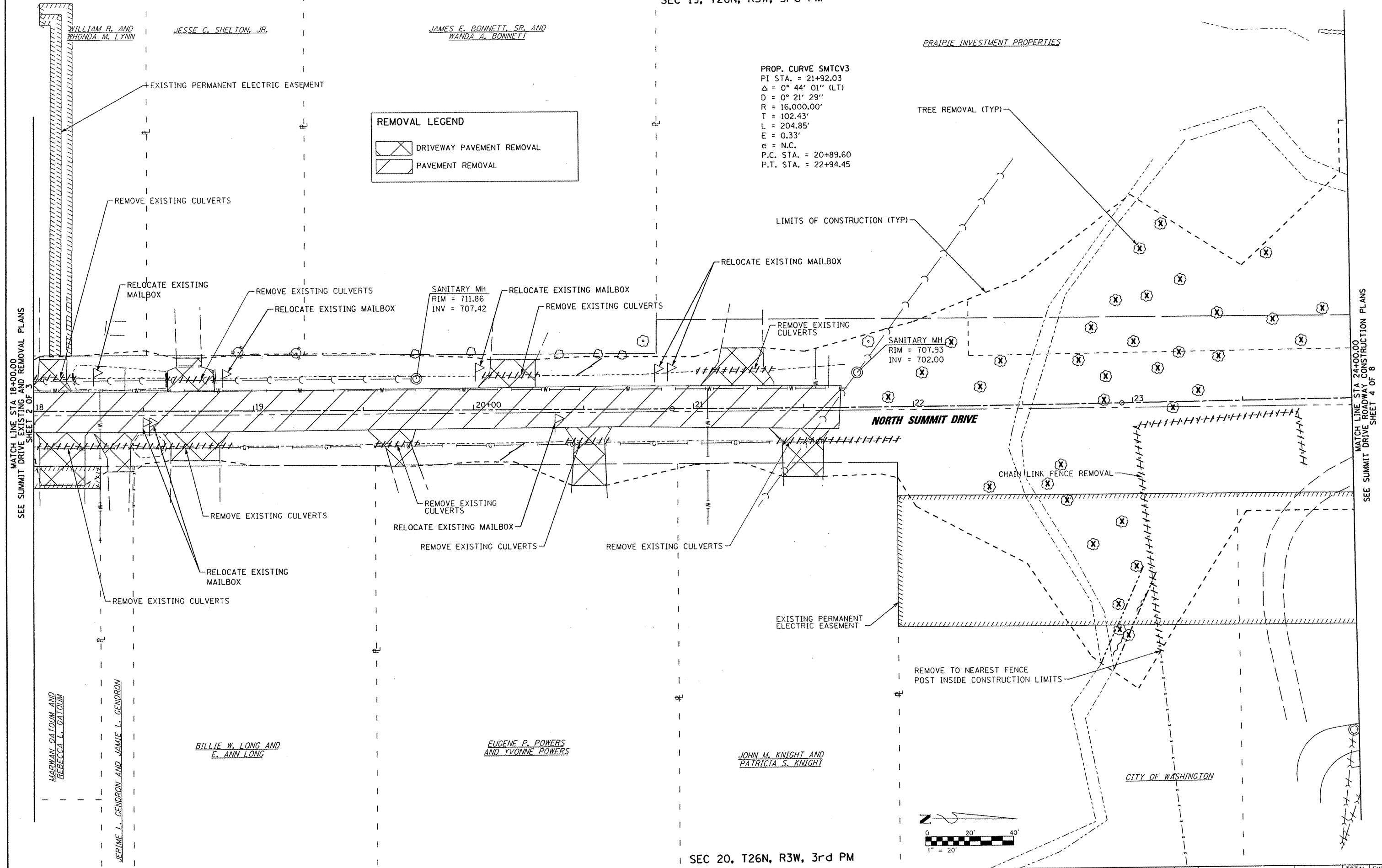


PROP. CURVE SMCV3
 PI STA. = 21+92.03
 $\Delta = 0^\circ 44' 01''$ (LT)
 $D = 0^\circ 21' 29''$
 $R = 16,000.00'$
 $T = 102.43'$
 $L = 204.85'$
 $E = 0.33'$
 $e = \text{N.C.}$
 P.C. STA. = 20+89.60
 P.T. STA. = 22+94.45



MATCH LINE STA 18+00.00
SEE SUMMIT DRIVE EXISTING AND REMOVAL PLANS
SHEET 2 OF 3

MATCH LINE STA 24+00.00
SEE SUMMIT DRIVE ROADWAY CONSTRUCTION PLANS
SHEET 4 OF 8



FILE NAME *	PLOT SCALE = #SCALE#	DESIGNED - RAW	REVISED -		SUMMIT DRIVE EXISTING AND REMOVAL PLAN		F.A.U. RTE.	SECTION	COUNTY	TOTAL SHEETS	SHEET NO.
	PLOT DATE = #DATE#	DRAWN - RAW	REVISED -		SCALE: 1" = 20'	SHEET NO. 3 OF 3 SHEETS	STA. 18+00.00 TO STA. 24+00.00	6775	04-00141-00-FP	TAZEWELL	187
#FILE#	PLOT TIME = #TIME#	CHECKED - RJA	REVISED -				FED. ROAD DIST. NO.	ILLINOIS FED. AID PROJECT	CONTRACT NO. 89352		
	DATE -	DATE -	REVISED -								