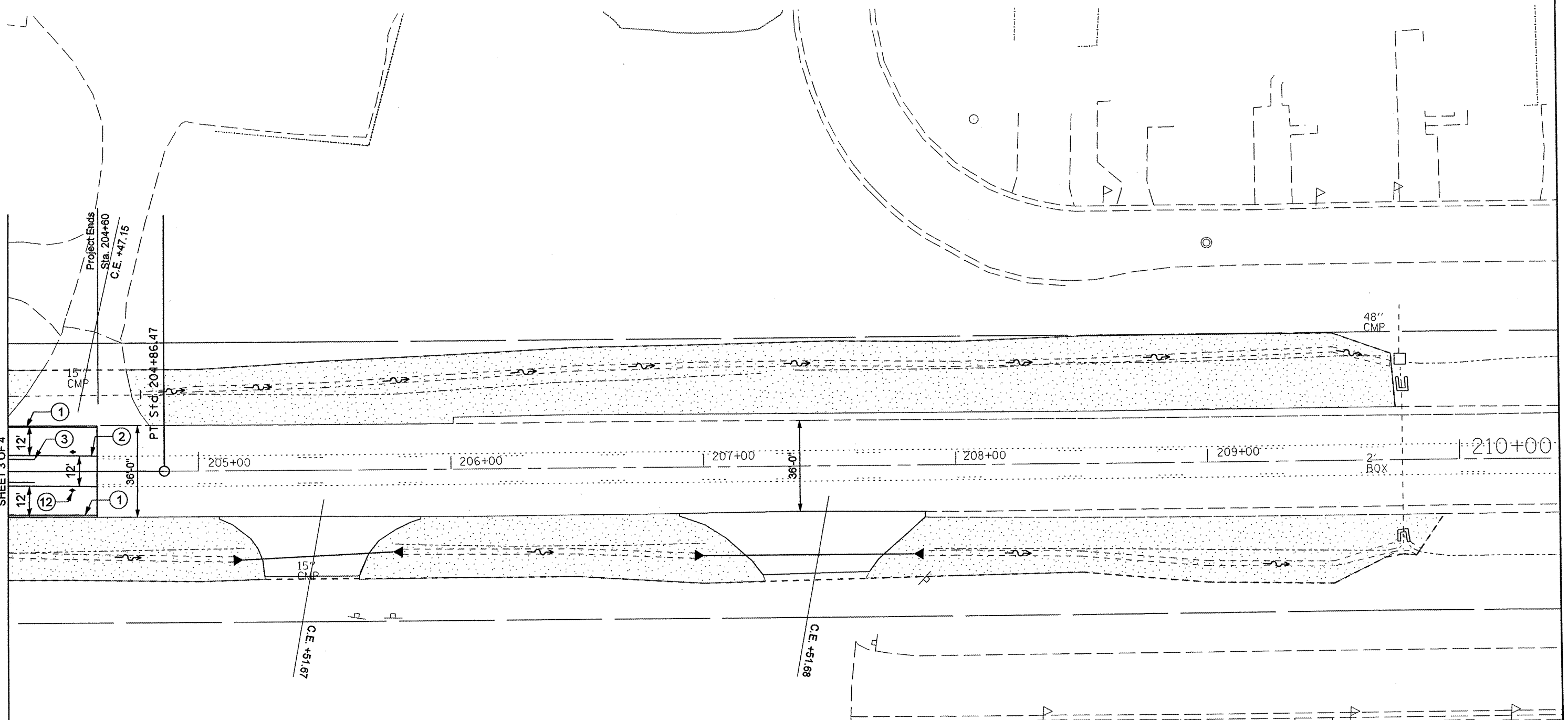


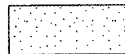
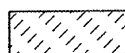
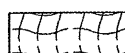

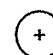
MATCHLINE STA. 204+25
SEE ILLINOIS ROUTE 8 PAVEMENT MARKING AND LANDSCAPING PLANS
SHEET 3 OF 4



PAVEMENT MARKING LEGEND

- | | |
|-----------------------|--|
| ① 4" White Solid | ⑧ 12" White Diagonal 20' c-c |
| ② 4" Yellow Solid | ⑨ Turn Arrow White |
| ③ 4" Yellow Skip Dash | ⑩ R.R.P.M. One-way Crystal Marker 80' C.C. |
| ④ 4" Double Yellow | ⑪ R.R.P.M. One-way Crystal Marker 40' C.C. |
| ⑤ 6" White Skip Dash | ⑫ R.R.P.M. Two-way Amber Marker 40' C.C. |
| ⑥ 8" White Skip Dash | ⑬ 24" Stop Bar |
| ⑦ 8" White Solid | |

LANDSCAPING LEGEND

- | | |
|---|------------------------------------|
|  | Seeding Class 2A |
|  | Sodding, Salt Tolerant |
|  | Heavy Duty Erosion Control Blanket |
|  | Stone Riprap Class A4 |
|  | Proposed Tree |

FILE NAME =
#FILE#

USER NAME = #USER#	DESIGNED -	REVISED -
	DRAWN -	REVISED -
PLOT SCALE = #SCALE#	CHECKED -	REVISED -
PLOT DATE = #DATE#	DATE -	REVISED -

**STATE OF ILLINOIS
DEPARTMENT OF TRANSPORTATION**

**ILLINOIS ROUTE 8
PAVEMENT MARKING & LANDSCAPING PLAN**

SCALE: 1" = 20' SHEET NO. 4 OF 4 SHEETS STA. 204+25.00 TO STA. 210+00.00

F.A.U. RTE. 6775	SECTION 04-00141-00-FP	COUNTY TAZEWELL	TOTAL SHEETS 187	SHEET NO. 86
FED. ROAD DIST. NO. 4 ILLINOIS FED. AID PROJECT				
CONTRACT NO. 89352				