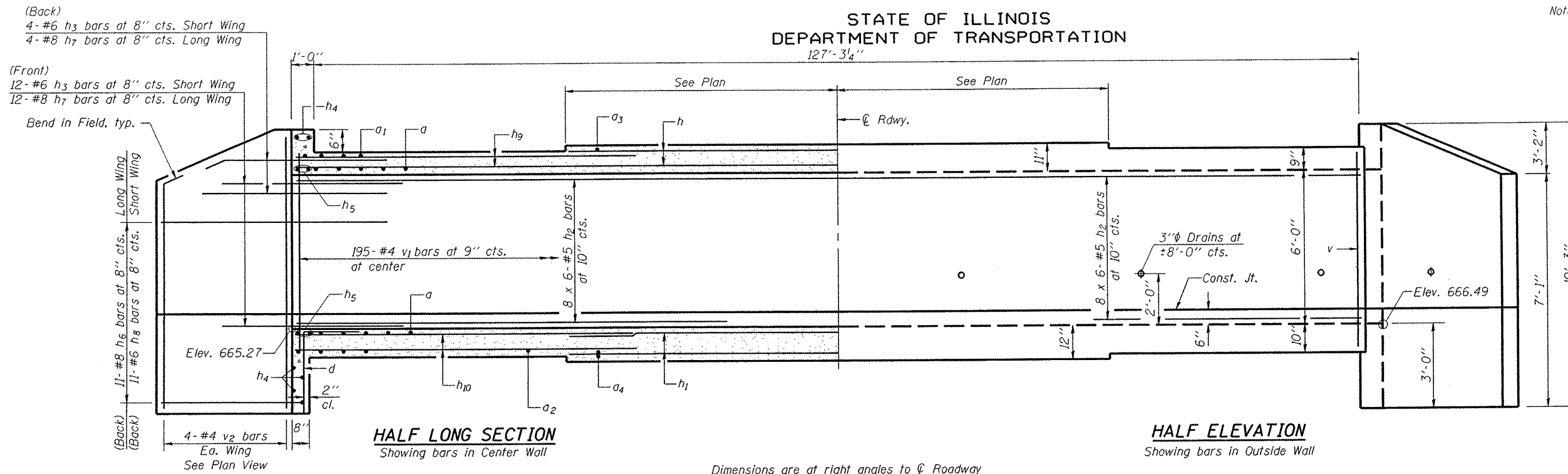


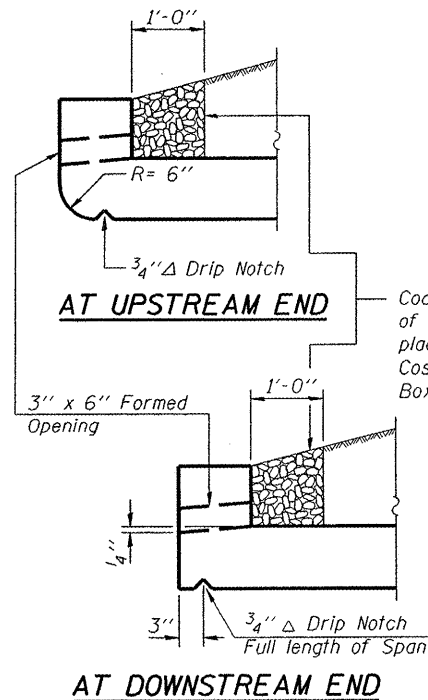
STATE OF ILLINOIS  
DEPARTMENT OF TRANSPORTATION  
127'-3 1/4"

Notes: Bars indicated thus 12 x 4-#5 etc. indicates 12 lines of bars with 4 lengths per line.

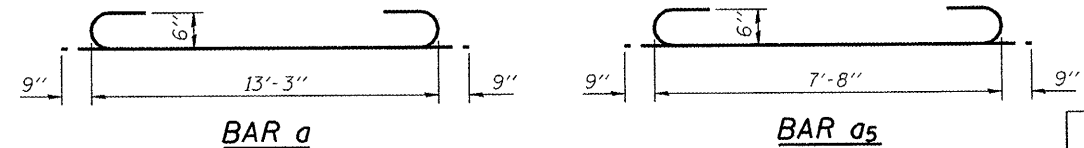
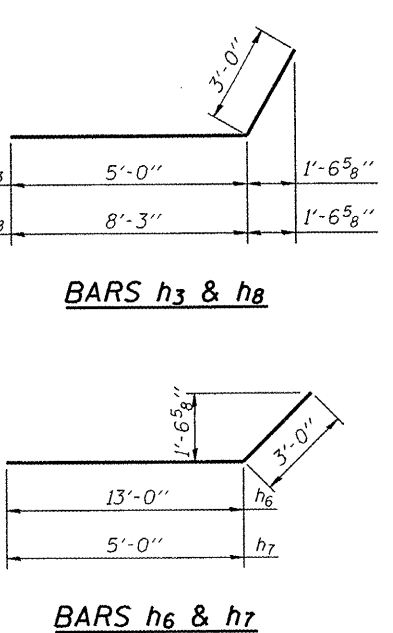
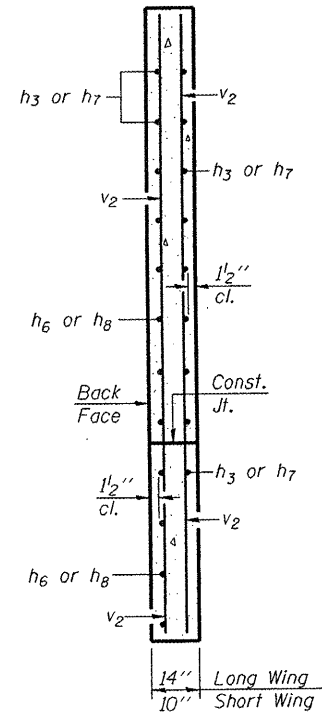
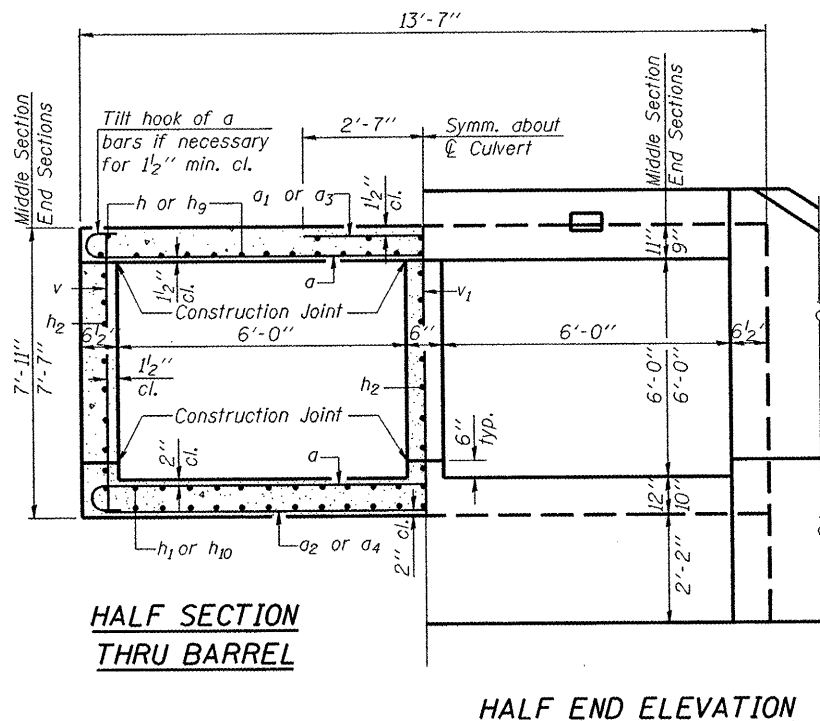


**BILL OF MATERIAL**

Bar	No.	Size	Length	Shape
a	350	#5	14'-9"	U
a1	120	#6	5'-2"	—
a2	120	#6	13'-3"	—
a3	114	#5	5'-2"	—
a4	113	#5	13'-3"	—
a5	5	#5	9'-2"	U
a6	8	#5	6'-0"	—
d	28	#4	4'-6"	L
h	90	#6	28'-0"	—
h1	114	#5	27'-10"	—
h2	144	#5	26'-3"	—
h3	32	#6	8'-0"	—
h4	10	#6	14'-9"	—
h5	8	#6	15'-7"	—
h6	22	#8	16'-3"	—
h7	32	#8	8'-0"	—
h8	22	#6	11'-6"	—
h9	60	#5	38'-1"	—
h10	76	#4	37'-9"	—
v	416	#6	7'-3"	—
v1	195	#4	7'-3"	—
v2	16	#4	9'-11"	—
Concrete Box Culverts		Cu. Yd.	198.4	
Reinforcement Bars		Pound	34790	



Coarse aggregate full length of both headwalls. To be placed by Grading Contractor. Cost included with Concrete Box Culverts.



**SECTION A-A**

**CULVERT DETAILS**

**MAURER & STUTZ, INC.**  
ENGINEERS SURVEYORS

DESIGNED - JAE  
CHECKED - BAS  
DRAWN - SGM  
CHECKED - BAS

SHEET NO. 3 3 SHEETS	F.A.U. RTE. 6775	SECTION 04-00141-00-FP	COUNTY TAZEWELL	TOTAL SHEETS 187	SHEET NO. 99
	CONTRACT NO. 89352			ILLINOIS FED. AID PROJECT	