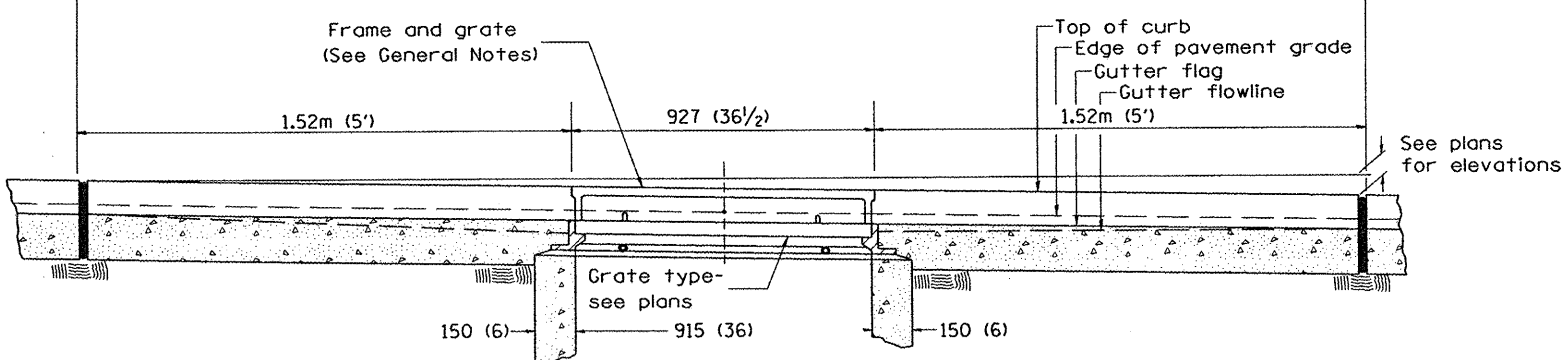
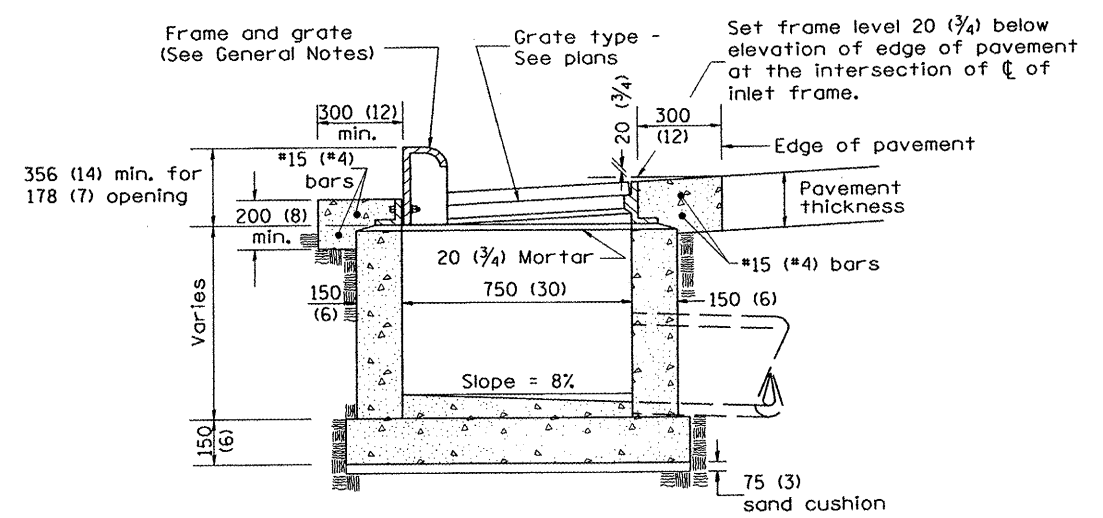


PLAN



ELEVATION (FRONT)



ELEVATION (SIDE)

GENERAL NOTES

1. Inlet construction shall be in accordance with Section 602 of the Standard Specifications.
2. Combination Concrete Curb and Gutter shall be constructed in accordance with Section 606 of the Standard Specifications.
3. See District CADD Standard 604001-D4 for frame and grates.

All dimensions are in millimeters (inches) unless otherwise noted.



FILE NAME :	
#FILE#	

PLOT SCALE = \$SCALE\$	DESIGNED - RAW	REVISED -
PLOT DATE = \$DATE\$	DRAWN - RAW	REVISED -
PLOT TIME = \$TIME\$	CHECKED - RJA	REVISED -
	DATE -	REVISED -

NO SCALE		SPECIAL DETAILS INLETS, TYPE G-1, SPECIAL	
CADD STD 602006-D4			

F.A.U. RTE.	SECTION	COUNTY	TOTAL SHEETS	SHEET NO.
6775	04-00141-00-FP	TAZEWELL	187	120
FED. ROAD DIST. NO.			ILLINOIS FED. AID PROJECT	
CONTRACT NO. 89352				