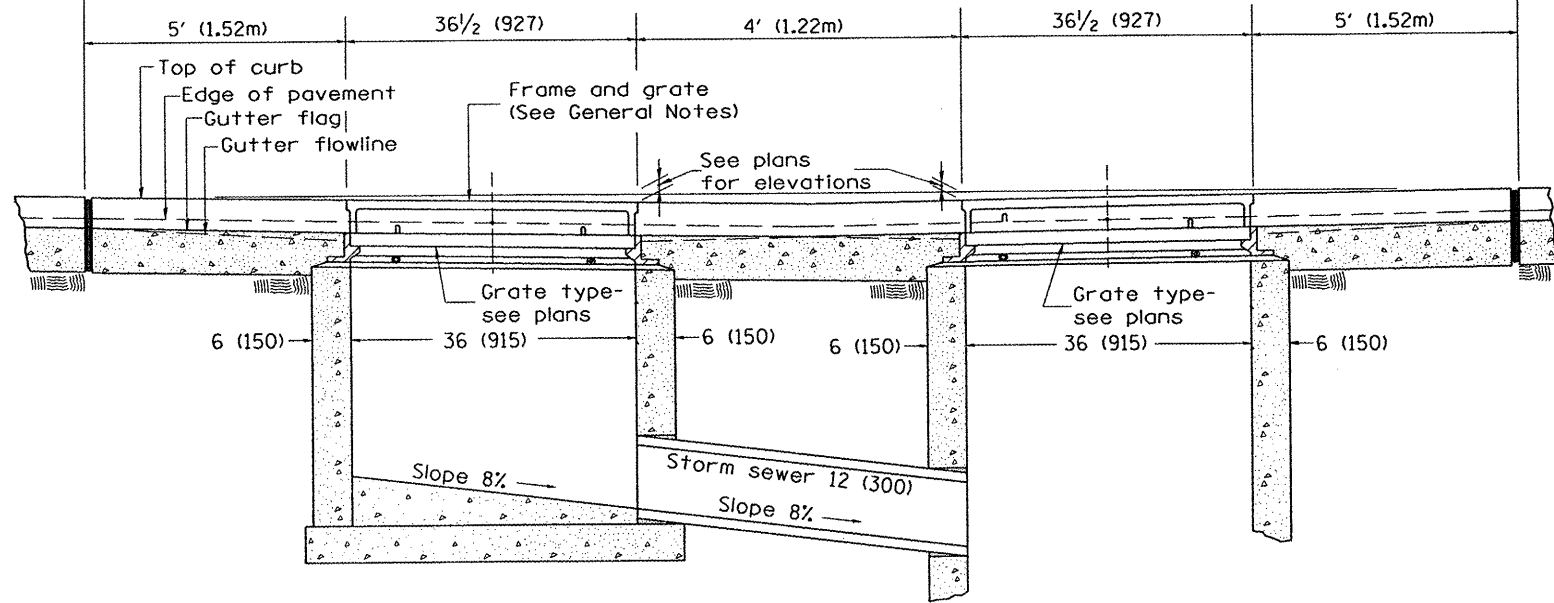
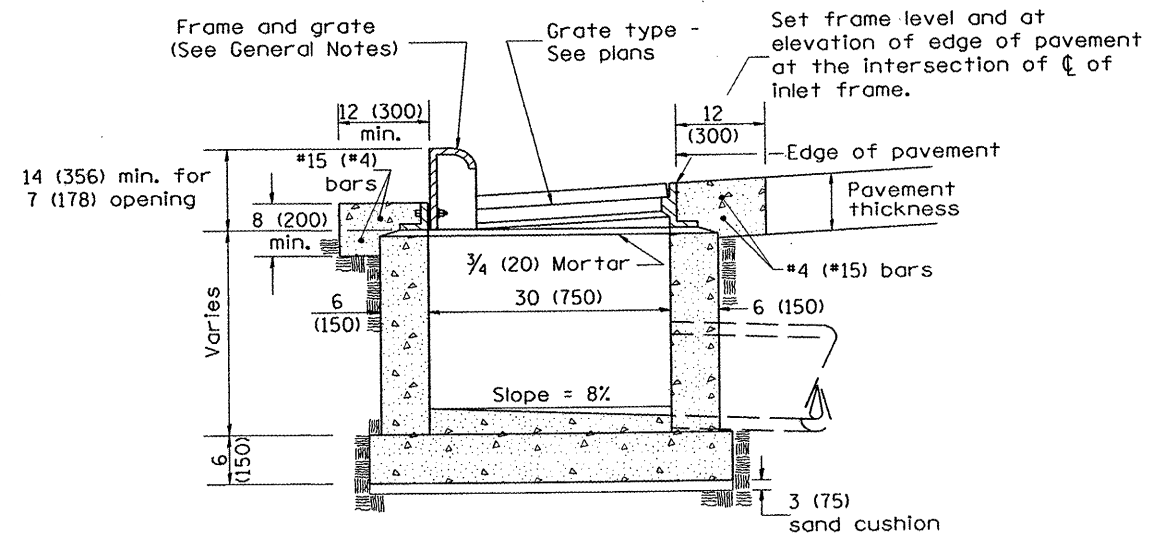


PLAN



FRONT ELEVATION



ELEVATION (SIDE)

GENERAL NOTES

1. Inlet construction shall be in accordance with Section 602 of the Standard Specifications.
2. Combination Concrete Curb & Gutter shall be constructed in accordance with Section 606 of the Standard Specifications.
3. See District CADD Standard 604001-D4 for frame and grates.

FILE NAME *	PLOT SCALE = *SCALE*	DESIGNED - RAW	REVISED -		SPECIAL DETAILS INLETS, TYPE G-1, DOUBLE	F.A.U. RTE.	SECTION	COUNTY	TOTAL SHEETS	SHEET NO.
	PLOT DATE = *DATE*	DRAWN - RAW	REVISED -			6775	04-00141-00-FP	TAZEWELL	187	121
#FILE#	PLOT TIME = *TIME*	CHECKED - RJA	REVISED -			CONTRACT NO. 89352		FED. ROAD DIST. NO. ILLINOIS FED. AID PROJECT		
	DATE	REVISED -	REVISED -		NO SCALE	CADD STD 602011-D4				