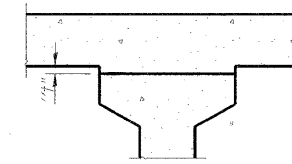


Note: The above deflections are not to be used in the field if the engineer is working from the grade elevations adjusted for dead load deflections as shown on Sht. 9 & 10 of 32.

DEAD LOAD DEFLECTION DIAGRAM
(Includes weight of concrete, excluding beams).



To determine "f": After all precast prestressed beams have been erected, elevations of the top flanges of the beams shall be taken at intervals shown on this sheet. These elevations subtracted from the "Theoretical Grade Elevations Adjusted for Dead Load Deflections" shown on Sht. 9 & 10 of 32, minus slab thickness, equals the fillet heights "f" above top flanges of beams.

FILLET HEIGHTS

GIRDER 1

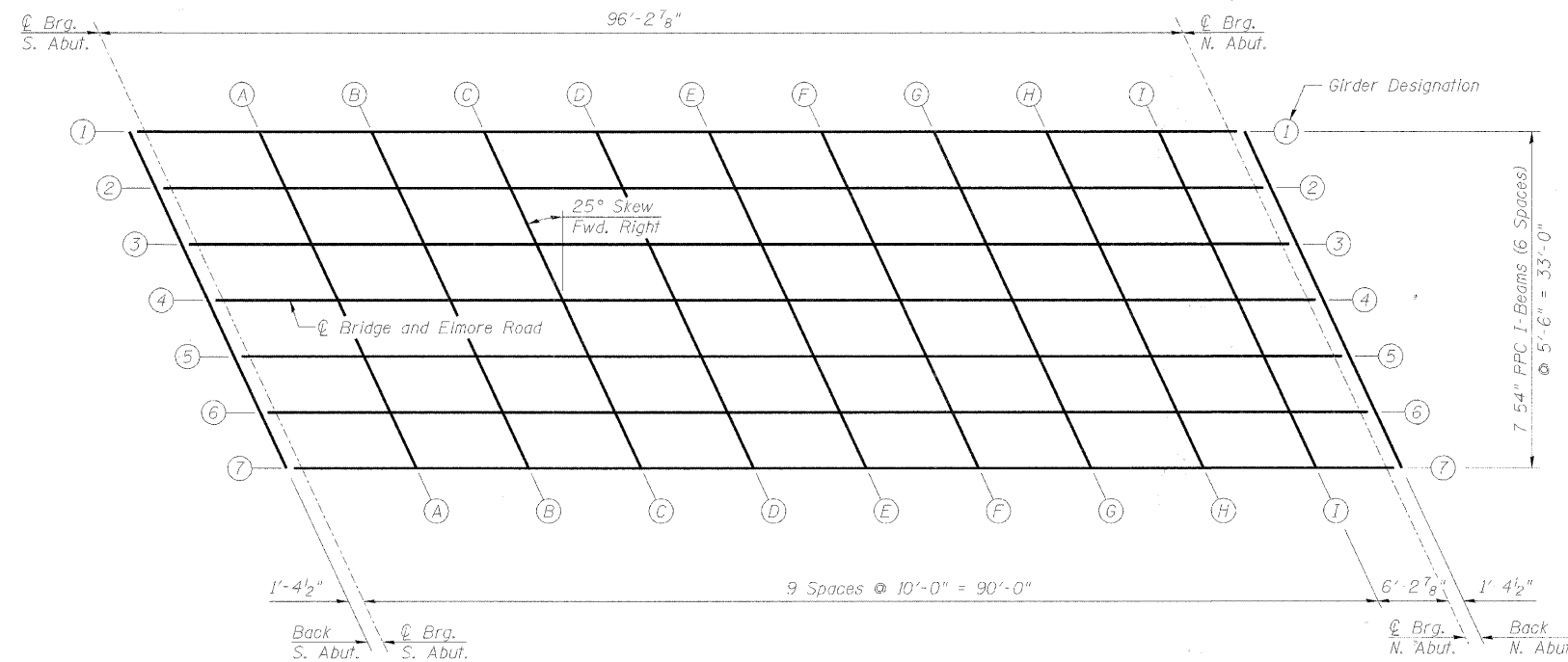
Location	Station	Offset (Left)	Theoretical Grade Elevations	Theoretical Grade Elevations Adjusted For Dead Load Deflection
Back S. Abut.	6+69.81	16.50	676.24	676.24
CL. Brg. S. Abut.	6+71.19	16.50	676.24	676.24
A	6+81.19	16.50	676.28	676.32
B	6+91.19	16.50	676.33	676.38
C	7+01.19	16.50	676.37	676.44
D	7+11.19	16.50	676.41	676.50
E	7+21.19	16.50	676.45	676.54
F	7+31.19	16.50	676.49	676.57
G	7+41.19	16.50	676.53	676.60
H	7+51.19	16.50	676.57	676.62
I	7+61.19	16.50	676.61	676.63
CL. Brg. N. Abut.	7+67.43	16.50	676.63	676.63
Back N. Abut.	7+68.81	16.50	676.64	676.64

GIRDER 2

Location	Station	Offset (Left)	Theoretical Grade Elevations	Theoretical Grade Elevations Adjusted For Dead Load Deflection
Back S. Abut.	6+72.37	11.00	676.36	676.36
CL. Brg. S. Abut.	6+73.75	11.00	676.36	676.36
A	6+83.75	11.00	676.41	676.44
B	6+93.75	11.00	676.45	676.50
C	7+03.75	11.00	676.49	676.56
D	7+13.75	11.00	676.53	676.62
E	7+23.75	11.00	676.57	676.66
F	7+33.75	11.00	676.61	676.69
G	7+43.75	11.00	676.65	676.72
H	7+53.75	11.00	676.69	676.74
I	7+63.75	11.00	676.73	676.75
CL. Brg. N. Abut.	7+69.99	11.00	676.75	676.75
Back N. Abut.	7+71.37	11.00	676.76	676.76

GIRDER 3

Location	Station	Offset (Left)	Theoretical Grade Elevations	Theoretical Grade Elevations Adjusted For Dead Load Deflection
Back S. Abut.	6+74.94	5.50	676.48	676.48
CL. Brg. S. Abut.	6+76.31	5.50	676.49	676.49
A	6+86.31	5.50	676.53	676.56
B	6+96.31	5.50	676.57	676.62
C	7+06.31	5.50	676.61	676.68
D	7+16.31	5.50	676.65	676.74
E	7+26.31	5.50	676.69	676.78
F	7+36.31	5.50	676.73	676.81
G	7+46.31	5.50	676.77	676.84
H	7+56.31	5.50	676.81	676.86
I	7+66.31	5.50	676.85	676.87
CL. Brg. N. Abut.	7+72.56	5.50	676.87	676.87
Back N. Abut.	7+73.94	5.50	676.88	676.88



PLAN



**DECK SLAB ELEVATIONS
ELMORE ROAD BRIDGE
OVER FRENCH CREEK**

DESIGNED	P.H
CHECKED	LLV
DRAWN	MGM
CHECKED	P.JL

Notes:
1. See Sht. 12 of 32 for Deck Cross Section.

<p>111 NE Jefferson Ave. Peoria, Illinois 61602 Ph: 309.676.8464 Fax: 309.676.5445 IL Design Firm Reg. No. 184-001518 www.aecom.com</p>	HWY	SECTION	COUNTY	TOTAL SHEETS	SHEET NO.
	R-15	08-00092-00-BR	PEORIA	32	9
	STRUCTURE NO. 072-3147		STATION 7+27		FED. ROAD DIST. NO. _ ILLINOIS FED. AID PROJECT BROS-01431049