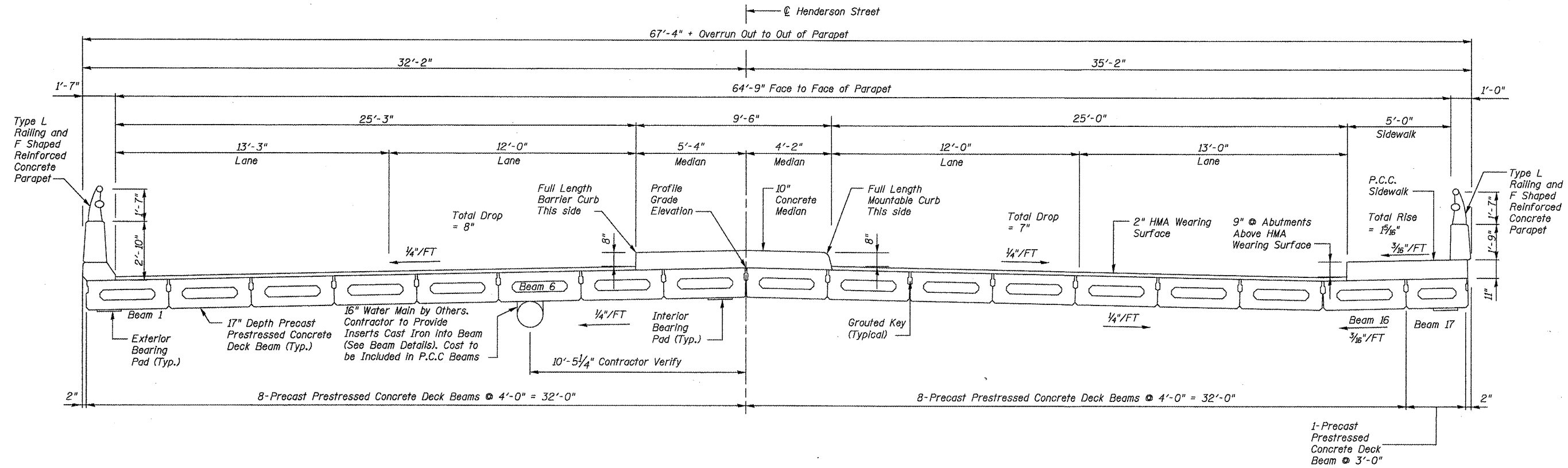
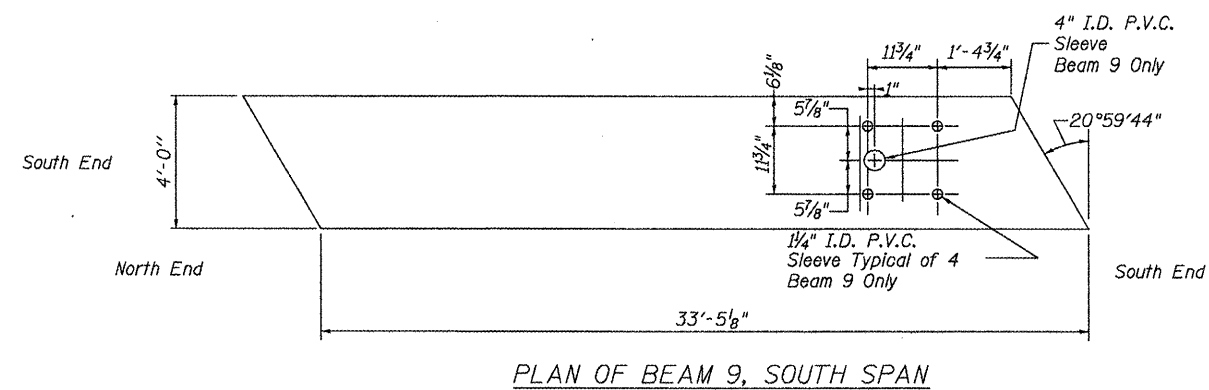
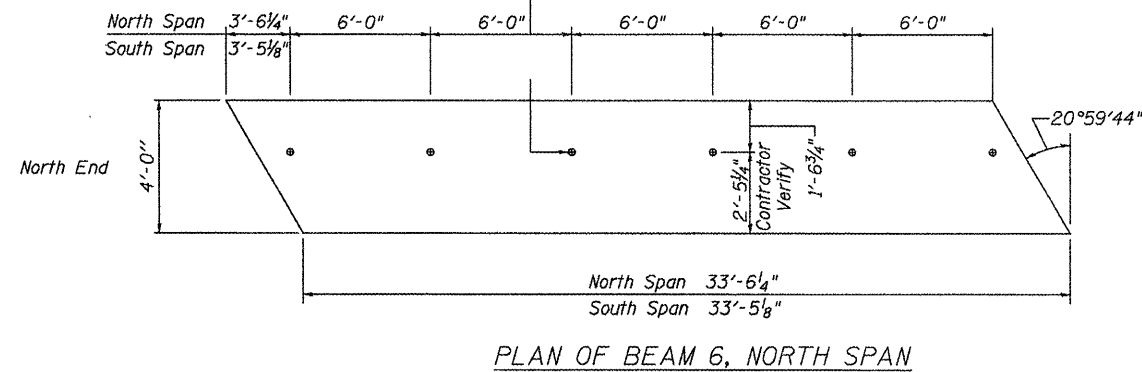


STATE OF ILLINOIS
DEPARTMENT OF TRANSPORTATION

F.A.U. RTE.	SECTION	COUNTY	TOTAL SHEETS	SHEET NO.
6791	07-00401-25-BR	KNOX	18	6
STA. 44+90.00		TO STA. 47+77.20		
FED. ROAD DIST. NO.	ILLINOIS	FED. AID PROJECT		
BRIDGE SHEET 2 of 14 SHEETS		BRM-5025(045) CONTRACT NO. 89557		



Threaded Insert In Bottom of Beam 6 Only (North and South Spans). Spaced as Shown. See Typical Section This Sheet and Special Provisions.



ILLINOIS DEPARTMENT OF TRANSPORTATION

SUPERSTRUCTURE I

S. HENDERSON STREET OVER CEDAR CREEK
SECTION 07-00401-25-BR
CITY OF GALESBURG, KNOX COUNTY
STA. 45+55.80 S.N. 048-0024

REVISIONS	
NAME	DATE

SCALE: VERT. NONE. HORIZ. NONE.

DATE: 08/28/2009

DRAWN BY: BCB
DESIGNED BY: PETERSON
CHECKED BY: PETERSON

Bruner, Cooper & Zuck, Inc.
Consulting Engineers Structural Engineers Land Surveyors
188 East Simons Street 188 East Simons Street PROFESSIONAL DESIGN FIRM
Galesburg, Illinois 61402 Galesburg, Illinois 61402 LS/PE/SE CORP. 184-02653
Phone: (309) 343-9282 Fax: (309) 343-9232 E-Mail: bcz@bczengr.com

JOB NO. 290067 FILE NAME: SPRSTRUCT_1.dwg