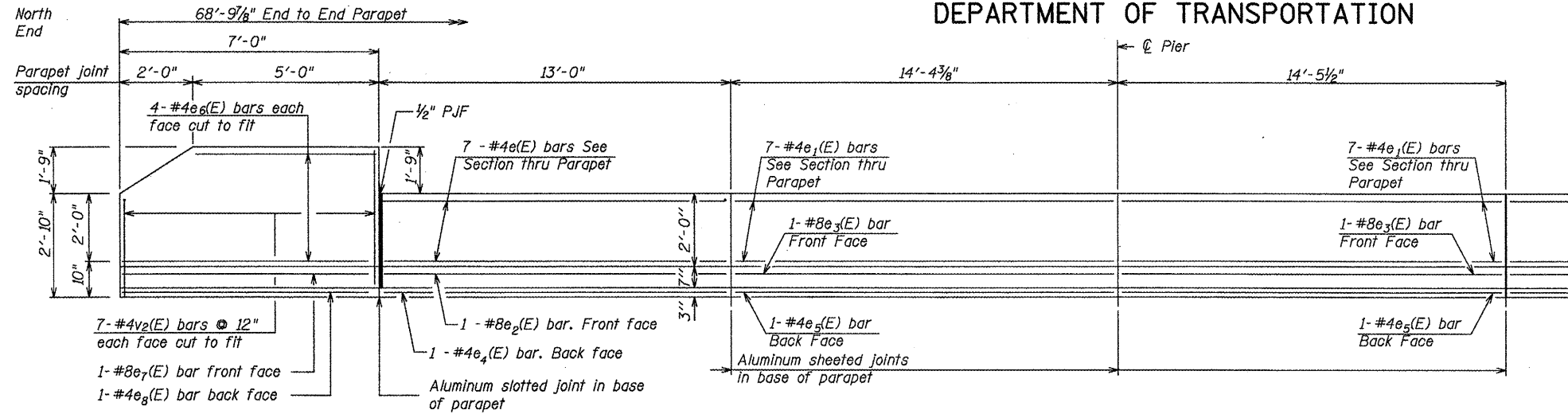


STATE OF ILLINOIS
DEPARTMENT OF TRANSPORTATION

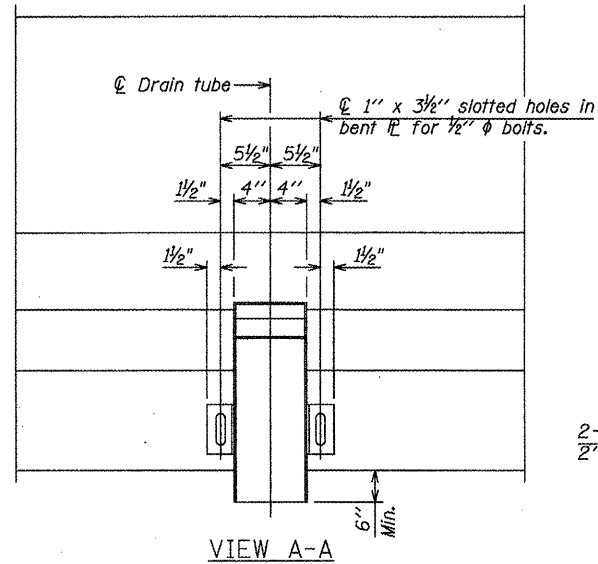
F.A.U. RTE.	SECTION	COUNTY	TOTAL SHEETS	SHEET NO.
6791	07-00401-25-BR	KNOX	18	12
STA. 44+90.00		TO STA. 47+77.20		
FED. ROAD DIST. NO. _		ILLINOIS	FED. AID PROJECT	
Bridge Sheet 8 of 14 Sheets				BRM-5025(045)
				CONTRACT NO. 89557



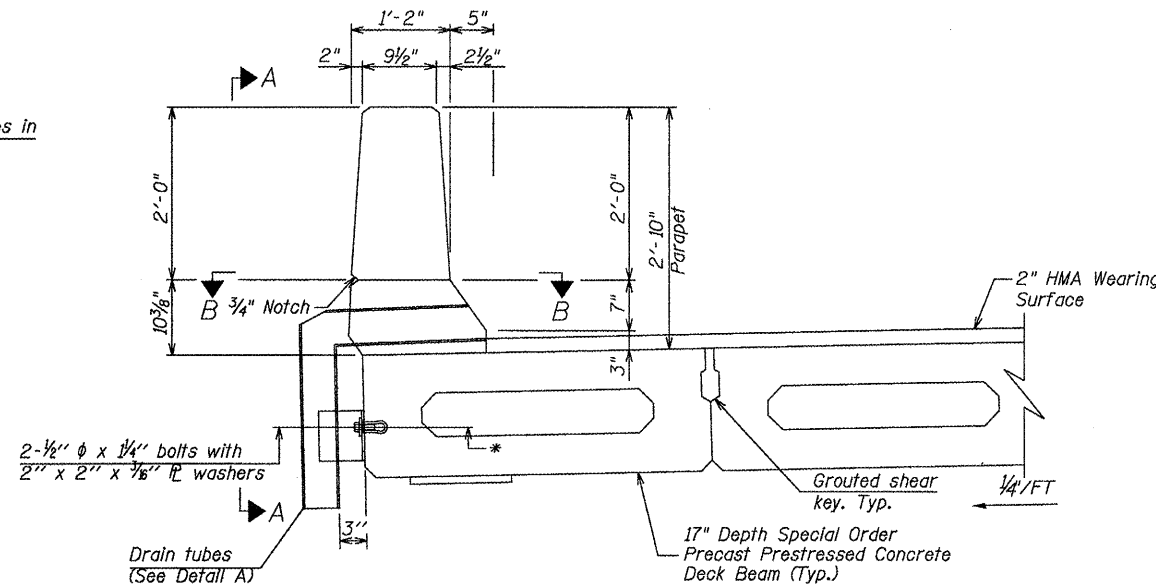
MINIMUM BAR LAP

#4 bar = 2'-0"
#8 bar = 5'-2"

INSIDE ELEVATION OF EAST PARAPET
(Looking East)

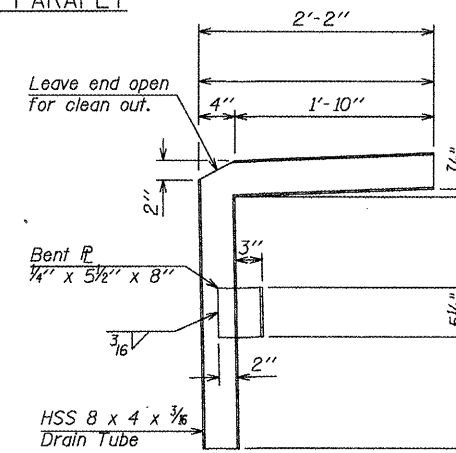


Note:
All drain tubes and accessories shall be galvanized according to AASHTO M111 or M232, (as applicable).
The cost of the drain tube assemblies and everything necessary for their installation is included with Concrete Superstructure.

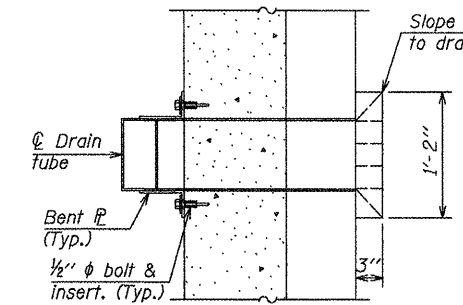


SECTION THRU EAST PARAPET

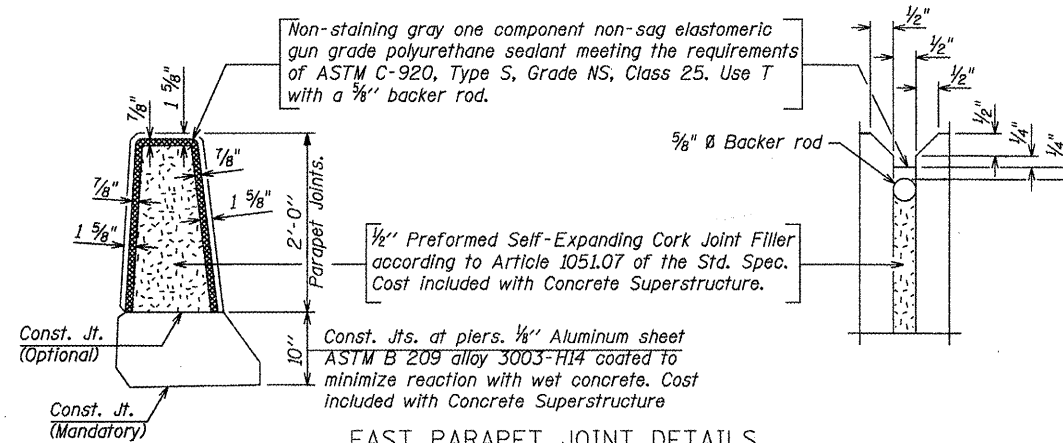
⊕ Loop Ferrule inserts for 1/2\"/>



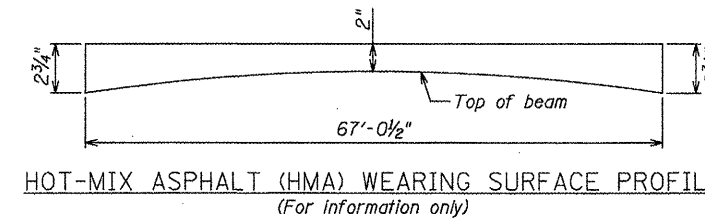
DETAIL A



SECTION B-B



EAST PARAPET JOINT DETAILS



ILLINOIS DEPARTMENT OF TRANSPORTATION
EAST PARAPET DETAILS
S. HENDERSON STREET OVER CEDAR CREEK
SECTION 07-00401-25-BR
CITY OF GALESBURG, KNOX COUNTY
STA. 45+55.80 S.N. 048-0024

REVISIONS	
NAME	DATE

SCALE: VERT. NONE, HORIZ. NONE
DATE: 08/28/2009
DRAWN BY: BCB
DESIGNED BY: PETERSON
CHECKED BY: PETERSON
Bruner • Cooper & Zuck • Inc.
Consulting Engineers Structural Engineers Land Surveyors
Phone: (309) 343-9282 188 East Simons Street Galesburg, Illinois 61601
Fax: (309) 343-9282 E-mail: bcz@bczengineering.com
JOB NO. 290067 FILE NAME: EASTPARAPETDETAILS.DGN